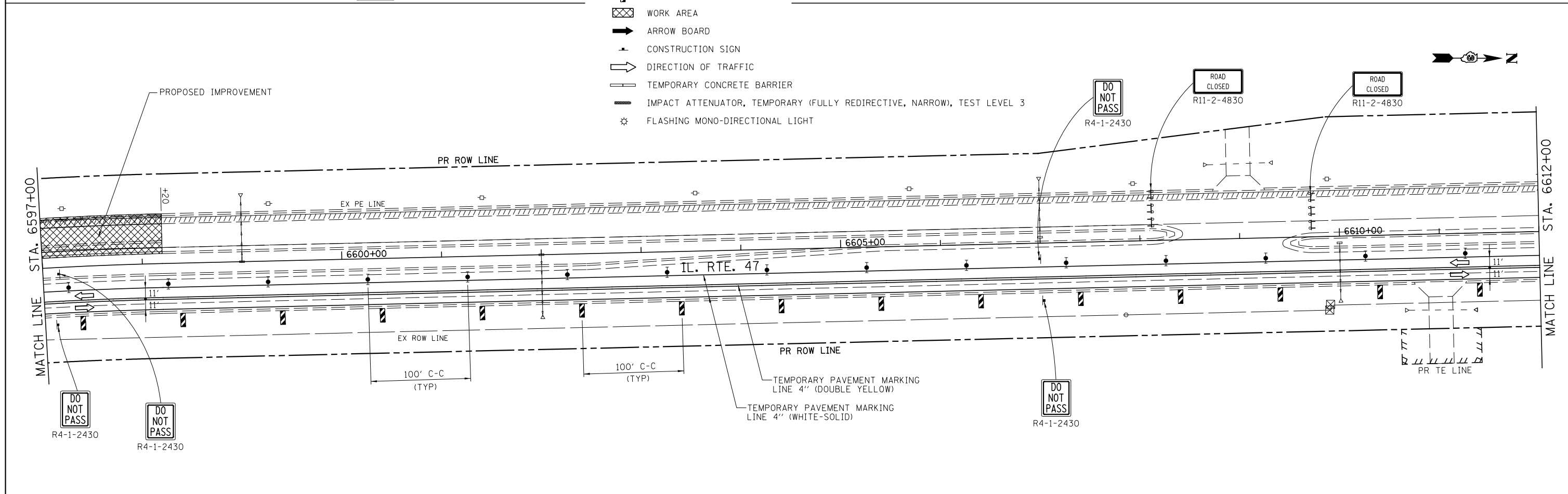


**LEGEND**

- DIRECTION INDICATOR BARRICADE WITH STEADY BURN MONDIRECTIONAL LIGHT
- TYPE II BARRICADE, DRUM OR VERTICAL BARRICADE WITH STEADY BURN BI-DIRECTIONAL LIGHT
- TYPE III BARRICADE WITH FLASHING LIGHT (2-EA.)
- DOUBLE VERTICAL PANEL
- WORK AREA
- ARROW BOARD
- CONSTRUCTION SIGN
- DIRECTION OF TRAFFIC
- TEMPORARY CONCRETE BARRIER
- IMPACT ATTENUATOR, TEMPORARY (FULLY REDIRECTIVE, NARROW), TEST LEVEL 3
- FLASHING MONO-DIRECTIONAL LIGHT



|   |                      |                |               |   |   |                       |                              |                    |                  |                           |  |  |
|---|----------------------|----------------|---------------|---|---|-----------------------|------------------------------|--------------------|------------------|---------------------------|--|--|
| FILE NAME = V:\3195\66884 (North Section)\CADD Sheets\0366884-sh1-MOT-Stage3-10.dgn | USER NAME = bdecaene | DESIGNED - HLC | REVISED -     | <b>STATE OF ILLINOIS<br/>DEPARTMENT OF TRANSPORTATION</b> | <b>IL. RTE. 47<br/>STAGE 3 CONSTRUCTION &amp; TRAFFIC CONTROL</b> | F.A.P. RTE. 326       | SECTION (109, 110)R-1        | COUNTY KENDALL     | TOTAL SHEETS 619 | SHEET NO. 195             |  |  |
| PLOT SCALE = 100.0000' / 1" /   | CHECKED - CAS        | REVISIED -     | SCALE: 1"=50' |   |   | SHEET 10 OF 18 SHEETS | STA. 6582+00 TO STA. 6612+00 | CONTRACT NO. 66884 |                  | ILLINOIS FED. AID PROJECT |  |  |
| PLOT DATE = 7/14/2014   | DATE - 7/01/2014     | REVISIED -     |               |   |   |                       |                              |                    |                  |                           |  |  |
|   |                      |                |               |   |   |                       |                              |                    |                  |                           |  |  |