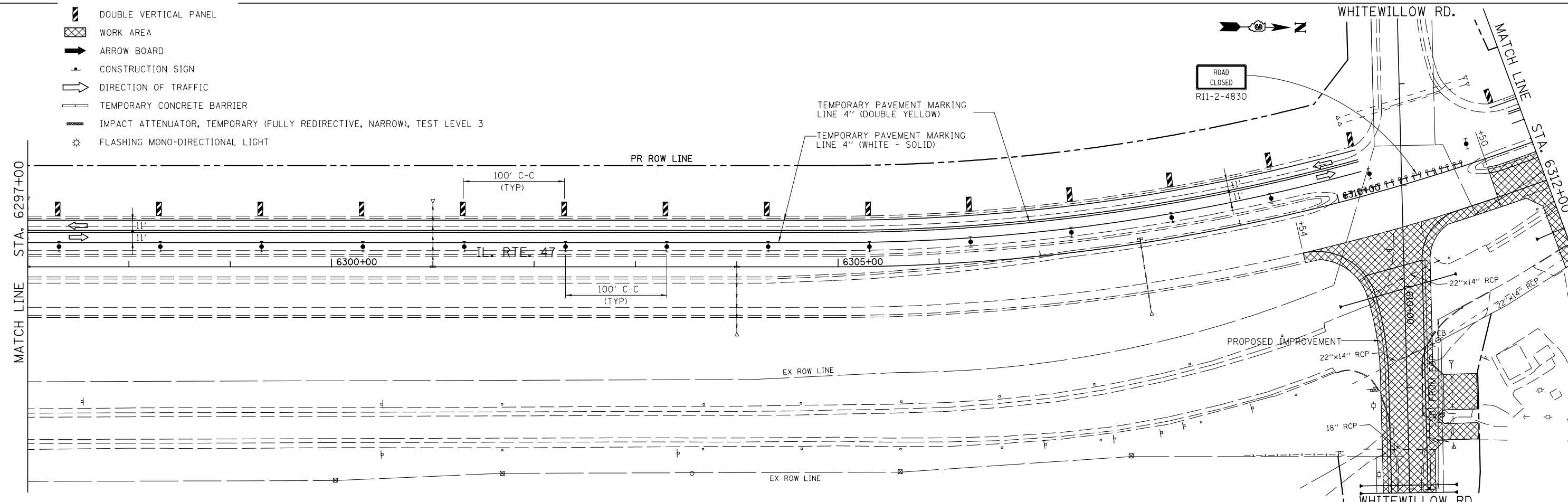


LEGEND

- DIRECTION INDICATOR BARRICADE WITH STEADY BURN MONIDIRECTIONAL LIGHT
- TYPE II BARRICADE, DRUM OR VERTICAL BARRICADE WITH STEADY BURN BI-DIRECTIONAL LIGHT
- TYPE III BARRICADE WITH FLASHING LIGHT (2-EA.)
- DOUBLE VERTICAL PANEL
- WORK AREA
- ARROW BOARD
- CONSTRUCTION SIGN
- DIRECTION OF TRAFFIC
- TEMPORARY CONCRETE BARRIER
- IMPACT ATTENUATOR, TEMPORARY (FULLY REDIRECTIVE, NARROW), TEST LEVEL 3
- FLASHING MONO-DIRECTIONAL LIGHT



| | | | | | | | | | | | |
|--|-----------------------|----------------|-----------|---|--|---------------------|---------------------------|------------------------------|--------------|-----------|-----|
| FILE NAME = | USER NAME = bdecreene | DESIGNED - HLC | REVISED - | STATE OF ILLINOIS DEPARTMENT OF TRANSPORTATION | IL RTE. 47 STAGE 4 CONSTRUCTION & TRAFFIC CONTROL | F.A.P. RTE. | SECTION | COUNTY | TOTAL SHEETS | SHEET NO. | |
| V:\3195\66884 (North Section)\CAOD Sheets\0366884-sh1-MOT-Stage4-02A.dgn | | | | | DRAWN - HLC | REVISED - | 326 | (109, 110) R-1 | KEWANA | 619 | 212 |
| PLOT SCALE = 100.0000' / 1" = | | | | | CHECKED - CAS | REVISED - | CONTRACT NO. 66884 | | | | |
| PLOT DATE = 7/14/2014 | | | | | DATE - 7/01/2014 | REVISED - | ILLINOIS FED. AID PROJECT | | | | |
| | | | | | SCALE: 1"=50' | SHEET 3 OF 7 SHEETS | | STA. 6282+00 TO STA. 6312+00 | | | |