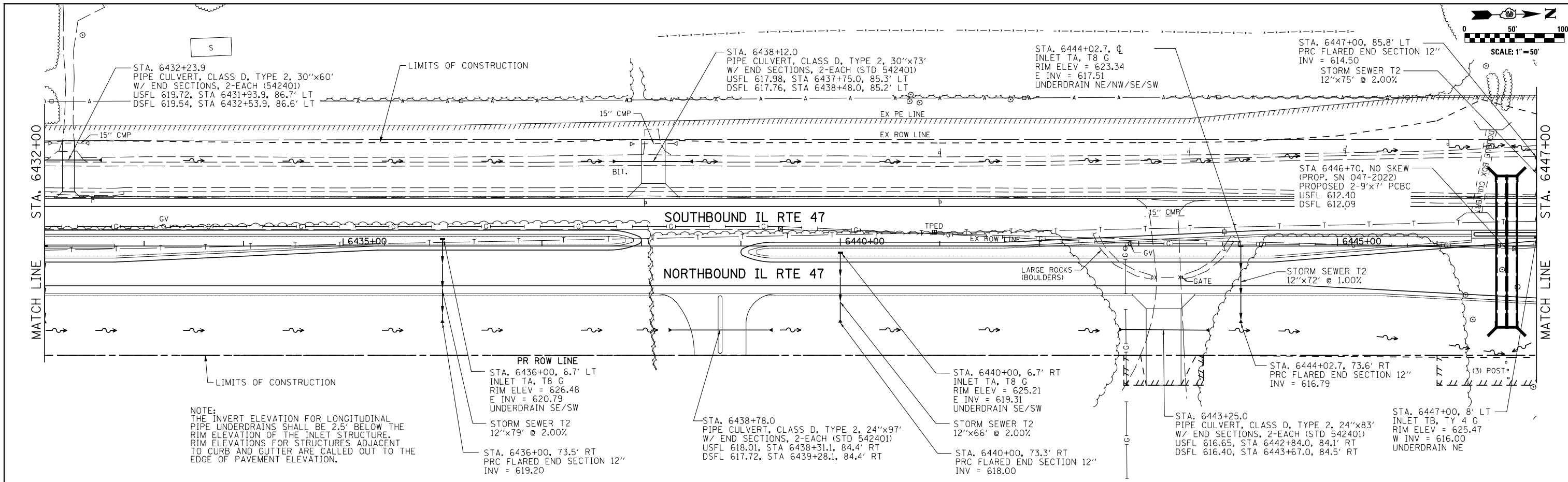
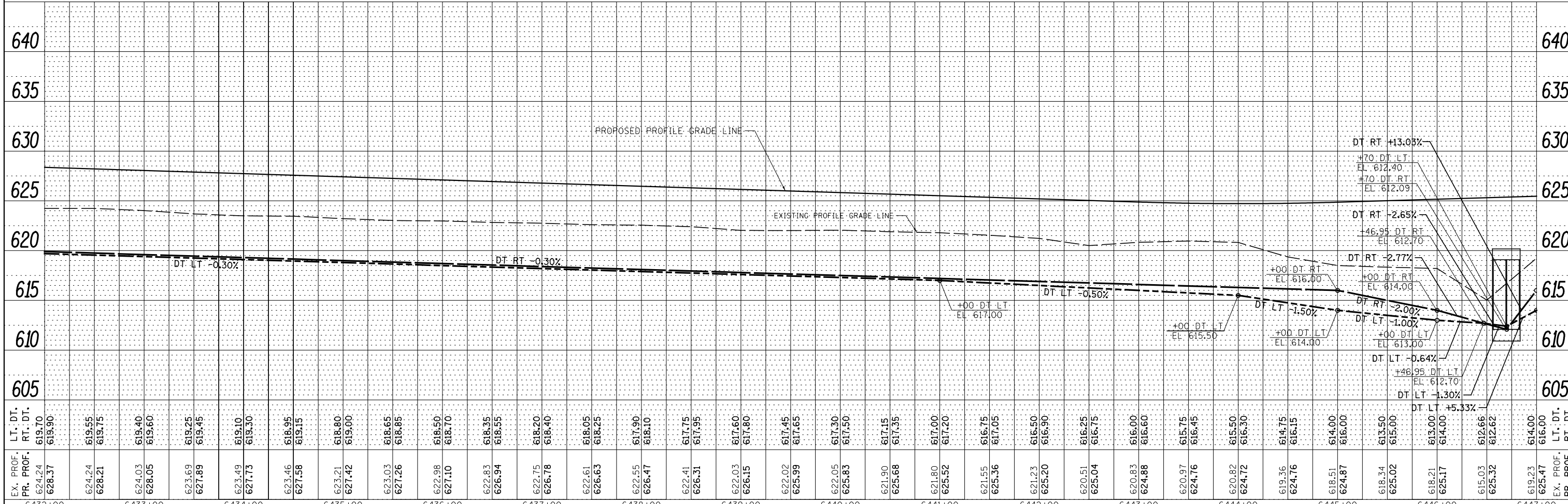


PLAN	SURVEYED	BY	DATE
	PLOTTED		
	ALIGNED		
	CHECKED		
	FILED		
	NO.		

PROFILE	SURVEYED	BY	DATE
	PLOTTED		
	GRADES		
	CHECKED		
	STRUCTURE		
	NOTATIONS		
	CPWD		
	NO.		



NOTE:
THE INVERT ELEVATION FOR LONGITUDINAL PIPE UNDERDRAINS SHALL BE 2.5' BELOW THE RIM ELEVATION OF THE INLET STRUCTURE. RIM ELEVATIONS FOR STRUCTURES ADJACENT TO CURB AND GUTTER ARE CALLED OUT TO THE EDGE OF PAVEMENT ELEVATION.



EX. PROF. PR. PROF.	LT. DT. RT. DT.	6432+00	6433+00	6434+00	6435+00	6436+00	6437+00	6438+00	6439+00	6440+00	6441+00	6442+00	6443+00	6444+00	6445+00	6446+00	6447+00																																																																																																						
628.37	619.90	624.24	619.55	624.03	619.40	628.05	619.60	623.69	619.25	627.89	619.45	623.49	619.10	627.73	619.30	623.46	618.95	627.58	619.15	623.21	618.80	627.42	619.00	623.03	618.65	627.26	618.85	622.98	618.50	627.10	618.70	622.83	618.35	626.94	618.55	622.75	618.20	626.78	618.40	622.61	618.05	626.63	618.25	622.55	617.90	626.47	618.10	622.41	617.75	626.31	617.95	622.03	617.60	626.15	617.80	622.02	617.45	625.99	617.65	622.05	617.30	625.83	617.50	621.90	617.15	625.68	617.35	621.80	617.00	625.52	617.20	621.55	616.75	625.36	617.05	621.23	616.50	625.20	616.90	620.51	616.25	625.04	616.75	620.83	616.00	624.88	616.60	620.97	615.75	624.76	616.45	620.82	615.50	624.72	616.30	619.36	614.75	624.76	616.15	618.51	614.00	624.87	616.00	618.34	613.50	625.02	615.00	618.21	613.00	625.17	614.00	615.03	612.66	625.32	612.62	619.23	614.00	625.47	616.00

STATE OF ILLINOIS
DEPARTMENT OF TRANSPORTATION

IL. RTE. 47
STORM SEWER AND UTILITIES PLAN & PROFILE

FILE NAME = V:\3195\66884 (North Section)\CADD Sheets\0366884-shd-drain-13.dgn
SHT_PLNPROF

USER NAME = bdcraene
PLOT SCALE = 100.0000' / 1"
PLOT DATE = 7/14/2014

DESIGNED - JUR
DRAWN - JUR
CHECKED - GRE
DATE - 7/01/2014

REVISED -
REVISED -
REVISED -
REVISED -

SCALE: H=50 V=5 SHEET 13 OF 39 SHEETS STA. 6432+00 TO STA. 6447+00

F.A.P. RE. SECTION COUNTY TOTAL SHEETS SHEET NO.
326 (109, 110IR-1) KENDALL 619 253
CONTRACT NO. 66884
ILLINOIS FED. AID PROJECT