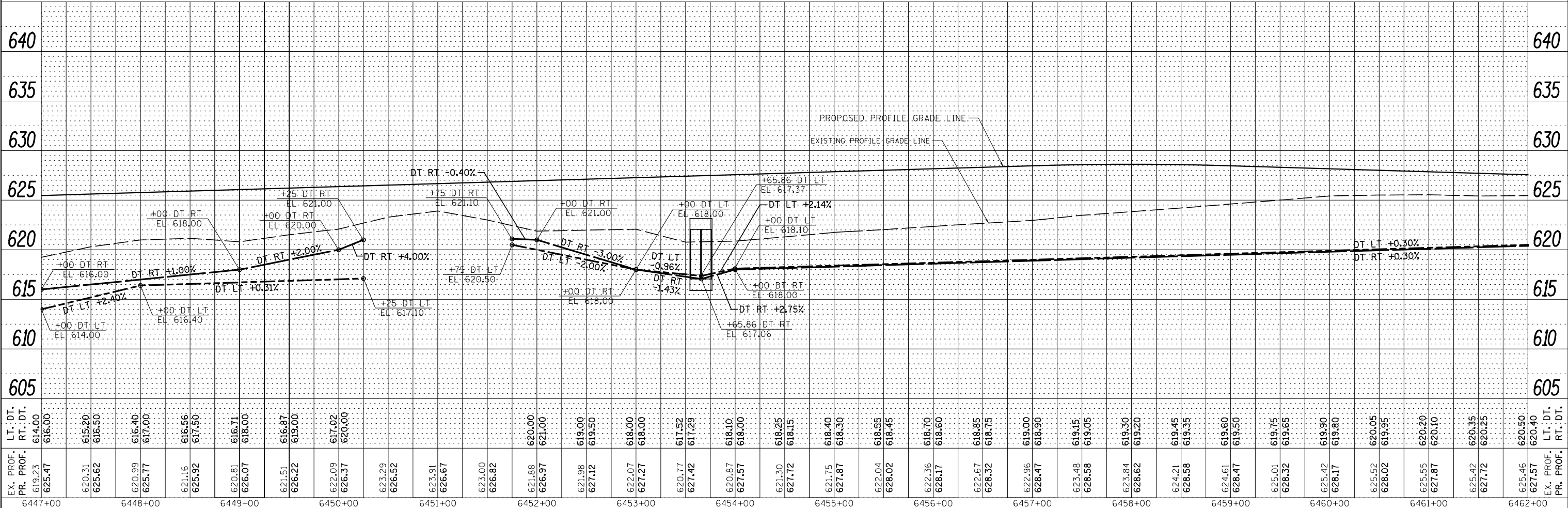
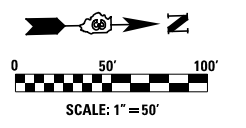
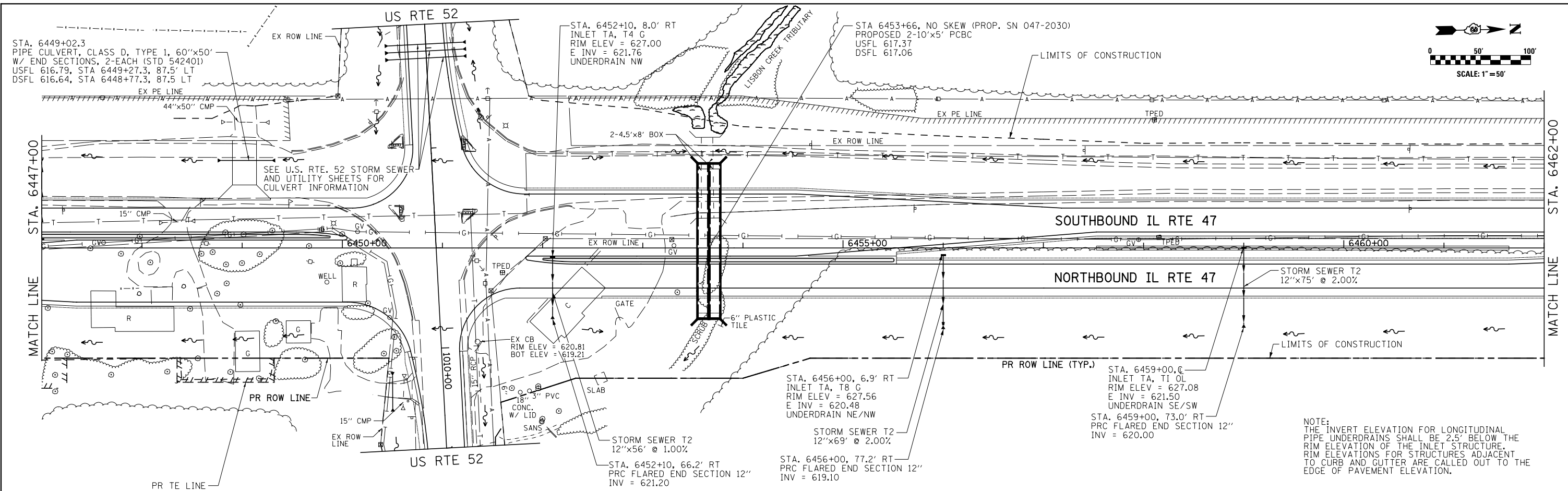


| | | |
|------|-----------------------------|------|
| PLAN | SURVEYED | DATE |
| | PLOTTED | BY |
| | GRADES CHECKED | |
| | STRUCTURE NOTATIONS CHECKED | |
| | NOTE BOOK NO. | |
| | FILE NAME | |

| | | |
|---------|-----------------------------|------|
| PROFILE | SURVEYED | DATE |
| | PLOTTED | BY |
| | GRADES CHECKED | |
| | STRUCTURE NOTATIONS CHECKED | |
| | NOTE BOOK NO. | |
| | FILE NAME | |



| | | | | | | | | | | | | | | | | | | |
|--|------------------------------|------------|-----------|-----------|--|--|---------------|---------|-----|---|--------------------|--|--|--------------|---------|--------|--------------|-----------|
| FILE NAME = | USER NAME = bdecrane | DESIGNED - | JJR | REVISED - | | STATE OF ILLINOIS DEPARTMENT OF TRANSPORTATION | | | | IL. RTE. 47 STORM SEWER AND UTILITIES PLAN & PROFILE | | | | F.A.P. RT. = | SECTION | COUNTY | TOTAL SHEETS | SHEET NO. |
| V:\3195\66884 (North Section)\CADD Sheets\0366884-shd-drain-14.dgn | | DRAWN - | JJR | REVISED - | | 326 | (109, 110R-1) | KENDALL | 619 | 254 | CONTRACT NO. 66884 | | | | | | | |
| SHT_PLNPROF | PLOT SCALE = 100.0000' / in. | CHECKED - | GRE | REVISED - | | SCALE: H=50 V=5 SHEET 14 OF 39 SHEETS STA. 6447+00 TO STA. 6462+00 | | | | ILLINOIS FED. AID PROJECT | | | | | | | | |
| | PLOT DATE = 7/14/2014 | DATE - | 7/01/2014 | REVISED - | | | | | | | | | | | | | | |

NOTE:
THE INVERT ELEVATION FOR LONGITUDINAL PIPE UNDERDRAINS SHALL BE 2.5' BELOW THE RIM ELEVATION OF THE INLET STRUCTURE. RIM ELEVATIONS FOR STRUCTURES ADJACENT TO CURB AND GUTTER ARE CALLED OUT TO THE EDGE OF PAVEMENT ELEVATION.