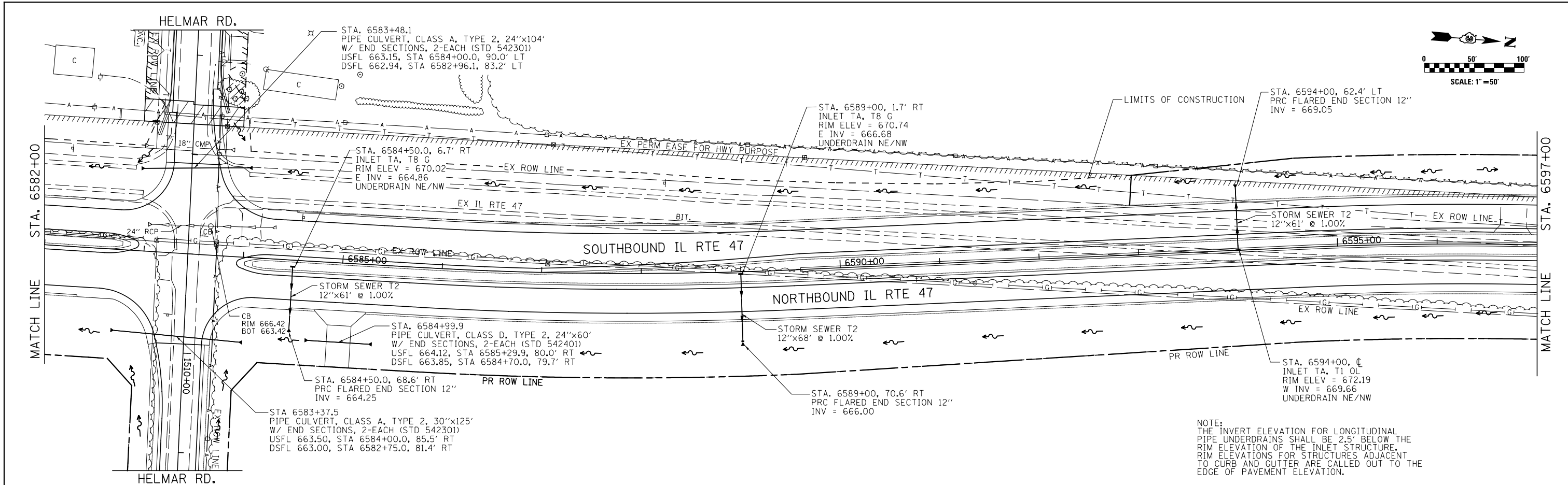
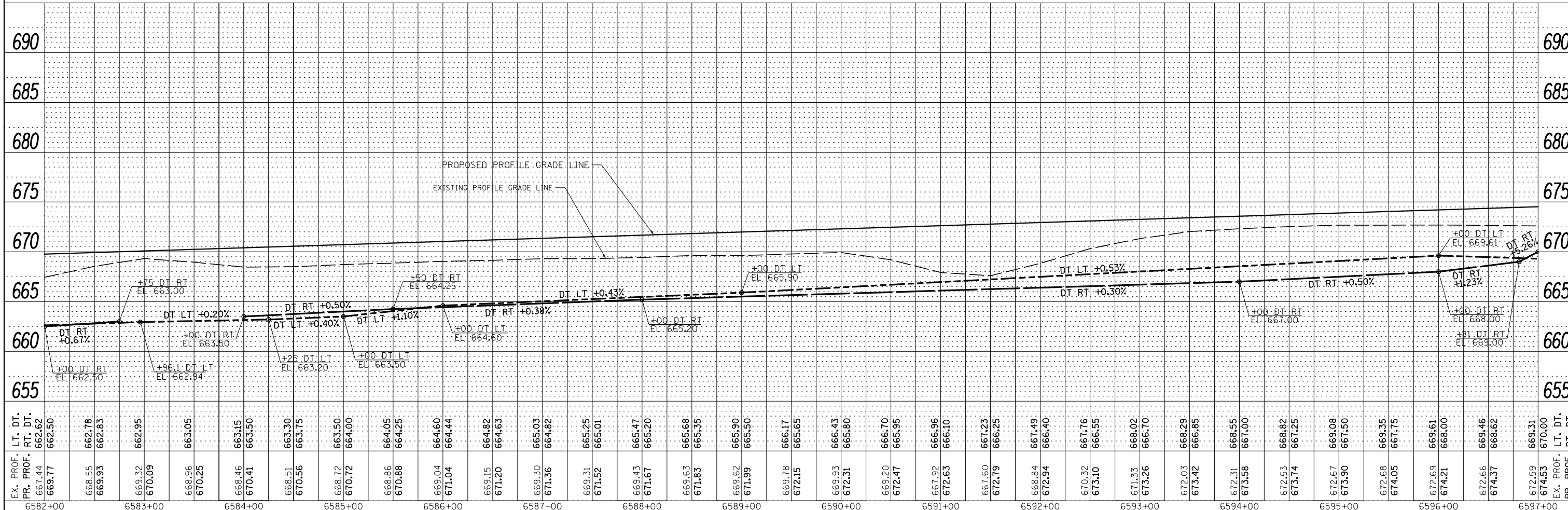


PLAN	SURVEYED	BY	DATE
	PLOTTED		
	ALIGNED		
	CHECKED		
	FILED		
	NO.		

PROFILE	SURVEYED	BY	DATE
	PLOTTED		
	GRADES		
	CHECKED		
	STRUCTURE		
	NOTATIONS		
	CHKD		
	NO.		



NOTE:  
THE INVERT ELEVATION FOR LONGITUDINAL PIPE UNDERDRAINS SHALL BE 2.5' BELOW THE RIM ELEVATION OF THE INLET STRUCTURE. RIM ELEVATIONS FOR STRUCTURES ADJACENT TO CURB AND GUTTER ARE CALLED OUT TO THE EDGE OF PAVEMENT ELEVATION.



FILE NAME =	USER NAME = bdecrane	DESIGNED -	JJR	REVISED -	
V:\3195\66884 (North Section)\CADD Sheets\3366884-shr-drain-23.dgn		DRAWN -	JJR	REVISED -	
SHT_PLNPROF		CHECKED -	GRE	REVISED -	
		DATE -	7/01/2014	REVISED -	

**STATE OF ILLINOIS**  
**DEPARTMENT OF TRANSPORTATION**

<b>IL. RTE. 47</b>		TOTAL SHEETS	619
<b>STORM SEWER AND UTILITIES PLAN &amp; PROFILE</b>		SHEET NO.	263
SCALE: H=50' V=5'	SHEET 23 OF 39 SHEETS	STA. 6582+00 TO STA. 6597+00	CONTRACT NO. 66884