

SE 1/4 OF SEC. 33, T. 35 N., R. 7 E. OF THE 3RD P.M.

W 1/4 CORNER SECTION 33
IRON PIPE (FOUND)
MON. REC. 9700009

LINE LEGEND 3VC0035	
1	S 88°16'54" W 200.20'
2	S 35°08'34" W 102.10'
3	S 01°40'38" W 30.32'

PROPERTY MONUMENTS FOUND
6257+76.60, 33.52' LT, R.O.W. MKR.
6257+75.50, 200.60' RT, R.O.W. MKR.
6258+59.59, 26.63' RT, R.O.W. MKR.
6262+51.99, 53.00' RT, R.O.W. MKR.
6270+66.24, 204.90' RT, R.O.W. MKR.
6273+79.40, 205.74' RT, R.O.W. MKR.
6274+17.35, 113.23' RT, R.O.W. MKR.
6274+45.25, 211.73' RT, R.O.W. MKR.
6275+43.16, 19.79' RT, R.O.W. MKR.

PARCEL NO. 3VC0035
THE ROUSONELOS AGRICULTURAL AND INVESTMENT PARTNERSHIP, LP
TOTAL HOLDING = 36.570 AC. ±
TOTAL R.O.W. REQUIRED = 6.327 AC. ±
AREA IN EXISTING R.O.W. = 0.497 AC. ±
NET R.O.W. REQUIRED = 5.830 AC. ±
REMAINDER = 30.243 AC. ±

PARCEL NO. 3VC0037
WEITENDORF ENTERPRISES, INC
TOTAL HOLDING = 38.770 AC. ±
TOTAL R.O.W. REQUIRED = 7.064 AC. ±
REMAINDER = 31.706 AC. ±

PARCEL NO. 3VC0036
THE ROUSONELOS AGRICULTURAL AND INVESTMENT PARTNERSHIP, LP
TOTAL HOLDING = 157.650 AC. ±
TOTAL R.O.W. REQUIRED = 0.569 AC. ±
AREA IN EXISTING R.O.W. = 0.286 AC. ±
NET R.O.W. REQUIRED = 0.283 AC. ±
REMAINDER = 157.081 AC. ±

LINE LEGEND 3VC0036	
4	N 88°23'18" E 35.75'
5	N 01°36'34" W 26.12'
6	N 00°07'42" W 28.62'

SW 1/4 OF SEC. 34, T. 35 N., R. 7 E. OF THE 3RD P.M.

STATE OF ILLINOIS)
COUNTY OF MORGAN) S.S.

I, TIMOTHY C. QUIGG, HEREBY CERTIFY THAT I AM A PROFESSIONAL LAND SURVEYOR OF THE STATE OF ILLINOIS, THAT THE SURVEY OF PROPOSED IL RTE 47 WAS MADE BY ME OR UNDER MY DIRECTION AND THAT THE SURVEY IS TRUE AND COMPLETE AS SHOWN TO THE BEST OF MY KNOWLEDGE AND BELIEF, THAT ALL MONUMENTS AND MARKS ARE OF THE CHARACTER AND OCCUPY THE POSITION SHOWN THEREON AND ARE SUFFICIENT TO ENABLE THE SURVEY TO BE RETRACED, THAT THIS PROFESSIONAL SERVICE CONFORMS TO THE CURRENT ILLINOIS MINIMUM STANDARDS FOR A BOUNDARY SURVEY.

DATED THIS th DAY OF 2012 A.D.

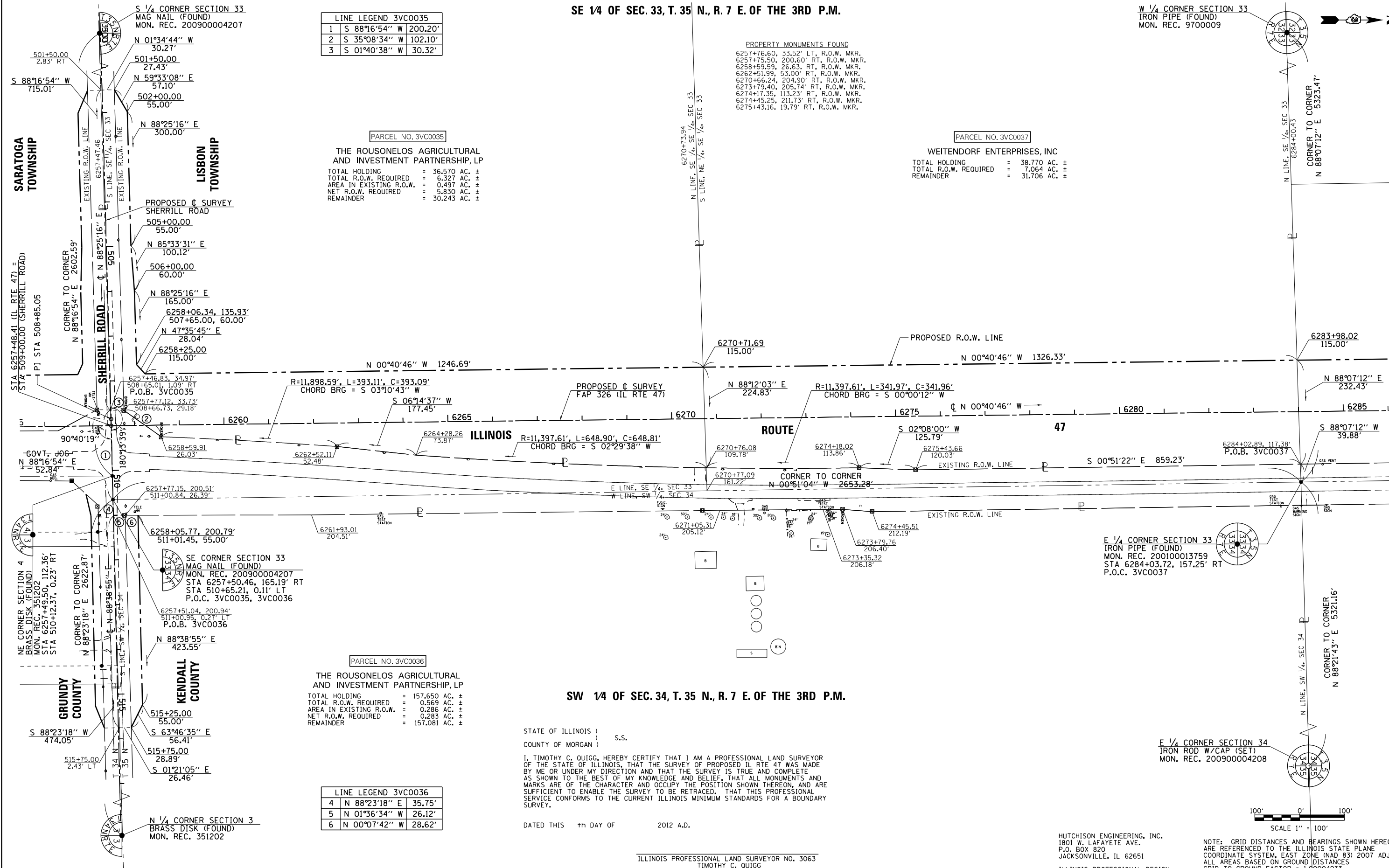
ILLINOIS PROFESSIONAL LAND SURVEYOR NO. 3063
TIMOTHY C. QUIGG

E 1/4 CORNER SECTION 34
IRON ROD W/CAP (SET)
MON. REC. 200900004208

SCALE 1" = 100'

HUTCHISON ENGINEERING, INC.
1801 W. LAFAYETTE AVE.
P.O. BOX 820
JACKSONVILLE, IL 62651
ILLINOIS PROFESSIONAL DESIGN
FIRM NO. 184-000825

NOTE: GRID DISTANCES AND BEARINGS SHOWN HEREON ARE REFERENCED TO THE ILLINOIS STATE PLANE COORDINATE SYSTEM, EAST ZONE (NAD 83) 2007 ADJ ALL AREAS BASED ON GROUND DISTANCES GRID TO GROUND FACTOR = 1.00004933 GROUND TO GRID FACTOR = 0.99995067



FILE NAME	USER NAME = duncanbd	DESIGNED -	REVISED -	STATE OF ILLINOIS DEPARTMENT OF TRANSPORTATION	RIGHT OF WAY PLANS		F.A.P. RTE.	SECTION	COUNTY	TOTAL SHEETS	SHEET NO.	
es:\pwork\pwork\td\tduncanbd\td8409210\0303808-sh-t-IL47-rwp\plan14.dgn		DRAWN -	REVISED -		PROJECT	JOB NO. R-93-003-08	326	(109, 110R-1)	KENDALL	619	281	
PLOT SCALE = 200.0000' / in.		CHECKED -	REVISED -		SCALE: 1" = 100'	SHEET NO. 14 OF 36 SHEETS	IL RTE 47					
PLOT DATE = 8/7/2014		DATE -	REVISED -				STA. 6257+47.46 TO STA. 6284+00.43					
							FED. ROAD DIST. NO.	ILLINOIS	FED. AID PROJECT			