

SW 1/4 OF SEC. 21, T. 35 N., R. 7 E. OF THE 3RD P.M.

W 1/4 CORNER SECTION 21  
IRON PIPE (FOUND)  
MON. REC. 9700010  
P.O.C. 3VC0050TE

SW CORNER SECTION 21  
IRON PIPE (FOUND)  
MON. REC. 9700007

PROP. CURVE IL47P12.10  
PI STA 6387+95.59  
Δ = 4°08'22" (LT)  
D = 0°34'23"  
R = 10,000.00'  
T = 361.38'  
L = 722.45'  
E = 6.53'  
PC STA 6384+34.21  
PT STA 6391+56.66

PROP. CURVE IL47P12.11  
PI STA 6395+34.89  
Δ = 4°19'55" (RT)  
D = 0°34'23"  
R = 10,000.00'  
T = 378.23'  
L = 756.09'  
E = 7.15'  
PC STA 6391+56.66  
PT STA 6399+12.75

PROPERTY MONUMENTS FOUND  
6380+98.79, 12.73' LT, IRON PIN  
6382+14.47, 24.38' LT, IRON PIN  
6384+97.22, 25.33' LT, R.O.W. MKR.  
6390+19.31, 7.18' LT, IRON PIN  
6391+64.47, 9.32' RT, IRON PIN  
6395+76.30, 30.50' RT, IRON PIN  
6396+74.64, 40.13' RT, R.O.W. MKR.

PARCEL NO. 3VC0050

COMMONWEALTH EDISON COMPANY  
TOTAL R.O.W. REQUIRED = 4,914 AC. ±  
AREA IN EXISTING IDOT P.E. = 3,032 AC. ±  
NET R.O.W. REQUIRED = 1,882 AC. ±  
PERMANENT EASEMENT NO. 1 = 0.146 AC. ±  
PERMANENT EASEMENT NO. 2 = 0.472 AC. ±  
PERMANENT EASEMENT NO. 3 = 0.057 AC. ± (2498 S.F.)  
PERMANENT EASEMENT NO. 4 = 0.062 AC. ± (2701 S.F.)  
PERMANENT EASEMENT NO. 5 = 0.057 AC. ± (2476 S.F.)  
PERMANENT EASEMENT NO. 6 = 0.048 AC. ± (2096 S.F.)  
PERMANENT EASEMENT NO. 7 = 0.111 AC. ±  
PERMANENT EASEMENT NO. 8 = 0.004 AC. ± (178 S.F.)  
TEMPORARY EASEMENT = 0.029 AC. ± (1245 S.F.)  
PE PURPOSE = ROADWAY CONSTRUCTION AND MAINTENANCE  
TE PURPOSE = ENTRANCE RECONSTRUCTION

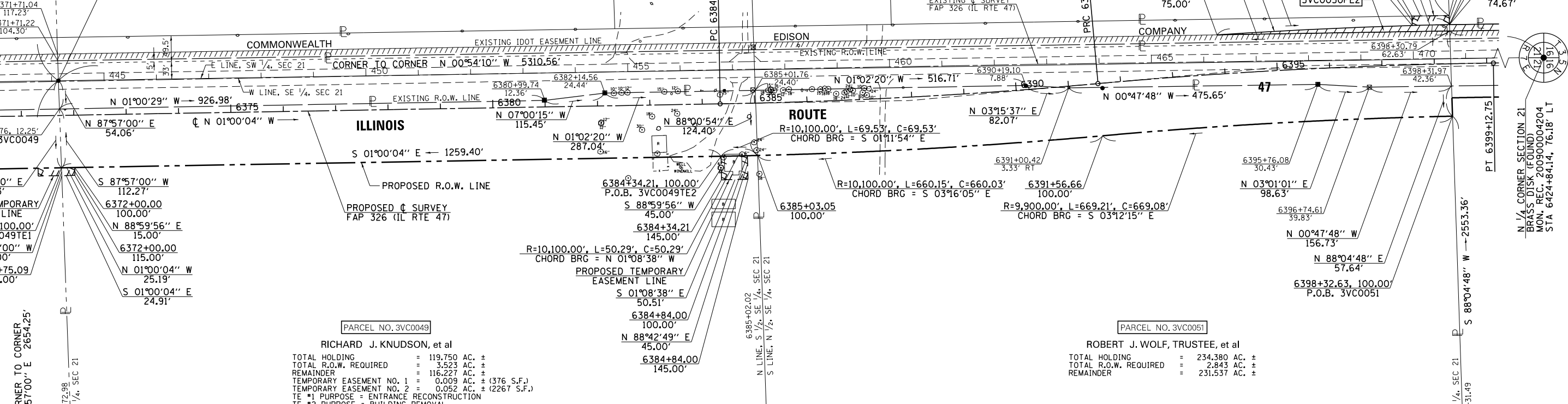
FOR 3VC0050, SEE SHEETS NO. 27 & 28  
FOR 3VC0050PE1, SEE SHEET NO. 30  
FOR 3VC0050PE3, SEE SHEET NO. 22  
FOR 3VC0050PE4, SEE SHEET NO. 23  
FOR 3VC0050PE5, SEE SHEET NO. 35  
FOR 3VC0050PE6, SEE SHEET NO. 36  
FOR 3VC0050PE7, SEE SHEET NO. 31  
FOR 3VC0050PE8, SEE SHEET NO. 31

CORNER TO CORNER  
N 88°10'38" E 2663.75'

CORNER TO CORNER  
N 88°04'48" E 5334.86'

S 1/4 CORNER SECTION 21  
BRASS DISK (FOUND)  
MON. REC. 200900004204  
STA 6371+71.77, 66.30' LT  
P.O.C. 3VC0049, 3VC0049TE1,  
3VC0049TE2

N 1/4 CORNER SECTION 21  
BRASS DISK (FOUND)  
MON. REC. 200900004204  
STA 6424+84.14, 76.18' LT



PARCEL NO. 3VC0049

RICHARD J. KNUDSON, et al  
TOTAL HOLDING = 119.750 AC. ±  
TOTAL R.O.W. REQUIRED = 3,523 AC. ±  
REMAINDER = 116.227 AC. ±  
TEMPORARY EASEMENT NO. 1 = 0.009 AC. ± (376 S.F.)  
TEMPORARY EASEMENT NO. 2 = 0.052 AC. ± (2267 S.F.)  
TE #1 PURPOSE = ENTRANCE RECONSTRUCTION  
TE #2 PURPOSE = BUILDING REMOVAL

PARCEL NO. 3VC0051

ROBERT J. WOLF, TRUSTEE, et al  
TOTAL HOLDING = 234.380 AC. ±  
TOTAL R.O.W. REQUIRED = 2,843 AC. ±  
REMAINDER = 231.537 AC. ±

SE 1/4 OF SEC. 21, T. 35 N., R. 7 E. OF THE 3RD P.M.

SE CORNER SECTION 21  
IRON ROD W/CAP (SET)  
MON. REC. 200900004204

E 1/4 CORNER SECTION 21  
IRON ROD W/CAP (SET)  
MON. REC. 200900004204  
P.O.C. 3VC0051

STATE OF ILLINOIS )  
COUNTY OF MORGAN ) S.S.

I, TIMOTHY C. QUIGG, HEREBY CERTIFY THAT I AM A PROFESSIONAL LAND SURVEYOR OF THE STATE OF ILLINOIS, THAT THE SURVEY OF PROPOSED IL RTE 47 WAS MADE BY ME OR UNDER MY DIRECTION AND THAT THE SURVEY IS TRUE AND COMPLETE AS SHOWN TO THE BEST OF MY KNOWLEDGE AND BELIEF, THAT ALL MONUMENTS AND MARKS ARE OF THE CHARACTER AND OCCUPY THE POSITION SHOWN THEREON AND ARE SUFFICIENT TO ENABLE THE SURVEY TO BE RETRACED, THAT THIS PROFESSIONAL SERVICE CONFORMS TO THE CURRENT ILLINOIS MINIMUM STANDARDS FOR A BOUNDARY SURVEY.

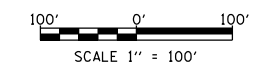
DATED THIS 17th DAY OF DECEMBER 2012 A.D.

ILLINOIS PROFESSIONAL LAND SURVEYOR NO. 3063  
TIMOTHY C. QUIGG

HUTCHISON ENGINEERING, INC.  
1801 W. LAFAYETTE AVE.  
P.O. BOX 820  
JACKSONVILLE, IL 62651

ILLINOIS PROFESSIONAL DESIGN  
FIRM NO. 184-000825

NOTE: GRID DISTANCES AND BEARINGS SHOWN HEREON ARE REFERENCED TO THE ILLINOIS STATE PLANE COORDINATE SYSTEM, EAST ZONE (NAD 83) 2007 ADJ ALL AREAS BASED ON GROUND DISTANCES GRID TO GROUND FACTOR = 1.00004933 GROUND TO GRID FACTOR = 0.99995067



FILE NAME	USER NAME = duncanbd	DESIGNED -	REVISED - 49 name change 6/10/13
et:\pw\work\p\dtd\tduncanbd\0409210\0303808-sh-t-IL47-rxp\plan19.dgn		DRAWN -	REVISED - 50 ease. #7, 7/16/13
PLOT SCALE = 200.0000' / in.		CHECKED -	REVISED -
PLOT DATE = 8/7/2014		DATE -	REVISED -

STATE OF ILLINOIS  
DEPARTMENT OF TRANSPORTATION

RIGHT OF WAY PLANS

F.A.P. RTE.	SECTION	COUNTY	TOTAL SHEETS	SHEET NO.
326	(109, 110IR-1)	KENDALL	619	286
SCALE: 1" = 100'	PROJECT	JOB NO. R-93-003-08	CONTRACT NO. 66B84	
	SHEET NO. 19 OF 36 SHEETS	STA. 6371+72.98 TO STA. 6398+31.49	FED. ROAD DIST. NO. ILLINOIS FED. AID PROJECT	