

SW 1/4 OF SEC. 9, T. 35 N., R. 7 E. OF THE 3RD P.M.

SW CORNER SECTION 9
IRON PIPE (FOUND)
MON. REC. 9700011

PROP. CURVE IL47P12.15
PI STA 6478+63.12
Δ = 1°25'57" (LT)
D = 0°10'05"
R = 34,097.00'
T = 426.26'
L = 852.47'
E = 2.66'
PC STA 6474+36.87
PT STA 6482+89.34

PROPERTY MONUMENTS FOUND
6482+87.13, 129.66' LT, IRON PIN
6482+87.16, 10.12' LT, R.O.W. MKR.
6485+96.59, 10.17' LT, R.O.W. MKR.
6485+97.09, 129.85' LT, IRON PIN
6487+97.63, 4.79' RT, R.O.W. MKR.
6491+96.88, 4.88' RT, IRON PIN
6492+68.04, 145.22' LT, IRON PIN
6493+96.90, 9.93' LT, IRON PIN
6493+97.27, 129.86' LT, R.O.W. MKR.
6502+76.87, 10.02' LT, IRON PIN
6503+57.75, 129.98' LT, IRON PIN
6503+91.01, 9.94' LT, IRON PIN
6504+17.54, 129.89' LT, R.O.W. MKR.

W 1/4 CORNER SECTION 9
MAG NAIL (FOUND)
MON. REC. 200900004200
P.O.C. 3VC0050PE4

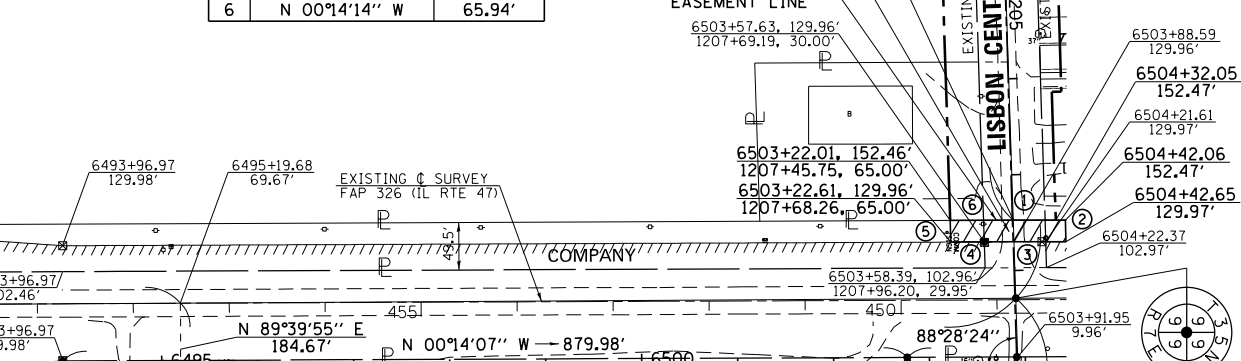
PARCEL NO. 3VC0050
COMMONWEALTH EDISON COMPANY
FOR AREAS, SEE SHEET NO. 19

LINE LEGEND 3VC0050PE4		
1	N 00°14'55" W	54.10'
2	N 88°14'13" E	22.51'
3	S 00°14'55" E	54.06'
4	S 00°14'14" E	65.98'
5	S 88°14'13" W	22.51'
6	N 00°14'14" W	65.94'

FOR LISBON CENTER RD
SEE SHEET NO. 33

PROPOSED SURVEY
LISBON CENTER ROAD
6503+87.96, 152.46'
1207+47.51, 0.92' LT
P.O.B. 3VC0050PE4

PROPOSED PERMANENT
EASEMENT LINE



S 1/4 CORNER SECTION 9
BRASS DISK (FOUND)
MON. REC. 9700011
STA 6477+42.79, 62.24' LT
P.O.C. 3VC0059TE2

PROPOSED R.O.W. LINE
R=34,192.00', L=541.20', C=541.19'
CHORD BRG = S 00°13'02" W

PARCEL NO. 3VC0059
JAMES T. CLOW
FOR AREAS, SEE SHEET NO. 22

PARCEL NO. 3VC0061
ZDZISLAW J. PLATOS, et ux
TOTAL HOLDING = 0.534 AC. ±
TOTAL R.O.W. REQUIRED = 0.534 AC. ±
REMAINDER = 0.000 AC. ±

6503+97.54, 192.35'
P.O.B. 3VC0061
NE CORNER PROPERTY
DOC. NO. 200800002094

LINE LEGEND 3VC0061		
7	S 00°14'07" E	114.99'
8	S 88°10'54" W	202.38'
9	N 00°14'07" W	114.99'
10	N 88°10'54" E	202.38'

SE 1/4 OF SEC. 9, T. 35 N., R. 7 E. OF THE 3RD P.M.

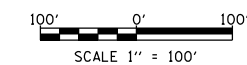
STATE OF ILLINOIS)
COUNTY OF MORGAN) S.S.

I, TIMOTHY C. QUIGG, HEREBY CERTIFY THAT I AM A PROFESSIONAL LAND SURVEYOR OF THE STATE OF ILLINOIS, THAT THE SURVEY OF PROPOSED IL RTE 47 WAS MADE BY ME OR UNDER MY DIRECTION AND THAT THE SURVEY IS TRUE AND COMPLETE AS SHOWN TO THE BEST OF MY KNOWLEDGE AND BELIEF, THAT ALL MONUMENTS AND MARKS ARE OF THE CHARACTER AND OCCUPY THE POSITION SHOWN THEREON, AND ARE SUFFICIENT TO ENABLE THE SURVEY TO BE RETRACED, THAT THIS PROFESSIONAL SERVICE CONFORMS TO THE CURRENT ILLINOIS MINIMUM STANDARDS FOR A BOUNDARY SURVEY.

DATED THIS 17th DAY OF DECEMBER 2012 A.D.

ILLINOIS PROFESSIONAL LAND SURVEYOR NO. 3063
TIMOTHY C. QUIGG

E 1/4 CORNER SECTION 9
IRON PIPE (FOUND)
MON. REC. 200900004201
P.O.C. 3VC0061



HUTCHISON ENGINEERING, INC.
1801 W. LAFAYETTE AVE.
P.O. BOX 820
JACKSONVILLE, IL 62651
ILLINOIS PROFESSIONAL DESIGN
FIRM NO. 184-000825

NOTE: GRID DISTANCES AND BEARINGS SHOWN HEREON ARE REFERENCED TO THE ILLINOIS STATE PLANE COORDINATE SYSTEM, EAST ZONE (NAD 83) 2007 ADJ ALL AREAS BASED ON GROUND DISTANCES GRID TO GROUND FACTOR = 1.00004933 GROUND TO GRID FACTOR = 0.99995067

FILE NAME	USER NAME = duncanbd	DESIGNED -	REVISED - 59 n/c 4/10/14 MKB	STATE OF ILLINOIS DEPARTMENT OF TRANSPORTATION	RIGHT OF WAY PLANS		F.A.P. RTE.	SECTION	COUNTY	TOTAL SHEETS	SHEET NO.
ei:\pw\work\p1dot\duncanbd\0409210\0303808-sh-t-IL47-rwp\lan23NEW.dgn		DRAWN -	REVISED -		PROJECT	JOB NO. R-93-003-08	326	(109, 110IR-1)	KENDALL	619	290
		CHECKED -	REVISED -		SCALE: 1" = 100'	SHEET NO. 23 OF 36 SHEETS	IL RTE 47		CONTRACT NO. 66B84		
		DATE -	REVISED -			FED. ROAD DIST. NO.	ILLINOIS	FED. AID PROJECT			