

NW 1/4 OF SEC. 33, T. 36 N., R. 7 E. OF THE 3RD P.M.

W 1/4 CORNER SECTION 33
IRON PIPE (FOUND)
MON. REC. 80-1974
P.O.C. 3VC0079
P.O.C. 3VC0050 ROW

NW CORNER SECTION 33
IRON PIPE (FOUND)
MON. REC. 90-7015

PARCEL NO. 3VC0050

COMMONWEALTH EDISON COMPANY
FOR AREAS, SEE SHEET NO. 19

PARCEL NO. 3VC0079
FOX BROTHERS / YORKVILLE LLC

TOTAL HOLDING = 156.990 AC. ±
TOTAL R.O.W. REQUIRED = 2.449 AC. ±
REMAINDER = 154.541 AC. ±

PROPERTY MONUMENTS FOUND
6609+88.61, 73.96' RT, IRON PIN
6609+89.54, 68.26' RT, R.O.W. MKR.
6635+46.52, 54.27' RT, IRON PIN
6635+88.76, 112.07' LT, R.O.W. MKR.
6635+94.26, 106.93' RT, IRON PIN

PROP. CURVE IL47P12.19
PI STA 6627+40.55
Δ = 2°01'58" (RT)
D = 0°28'39"
R = 12,000.00'
T = 212.88'
L = 425.72'
E = 1.89'
PC STA 6625+27.66
PT STA 6629+53.38

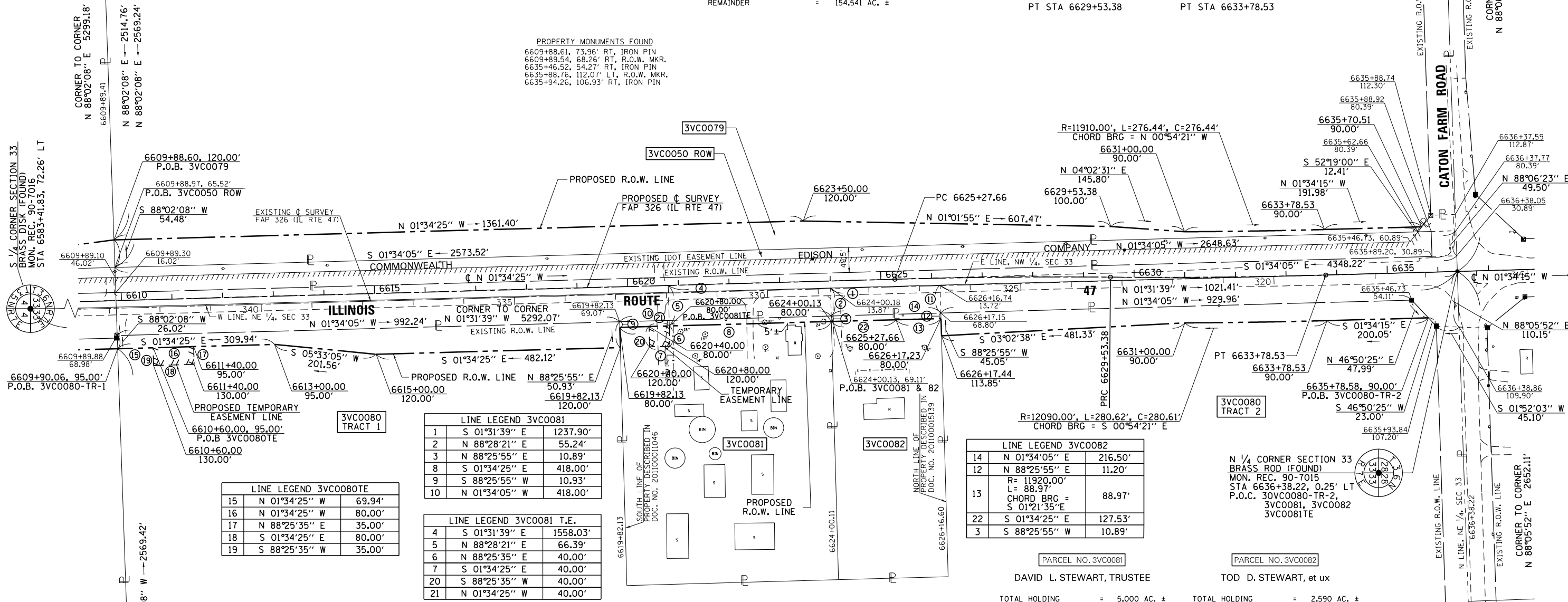
PROP. CURVE IL47P12.20
PI STA 6631+65.98
Δ = 2°01'48" (LT)
D = 0°28'39"
R = 12,000.00'
T = 212.60'
L = 425.15'
E = 1.88'
PC STA 6629+53.38
PT STA 6633+78.53

S 1/4 CORNER SECTION 33
BRASS DISK (FOUND)
MON. REC. 90-7016
STA 6583+41.83, 72.26' LT

S 1/4 CORNER SECTION 33
BRASS DISK (FOUND)
MON. REC. 90-7016
STA 6583+41.83, 72.26' LT

N 1/4 CORNER SECTION 33
BRASS ROD (FOUND)
MON. REC. 90-7015
STA 6636+38.22, 0.25' LT
P.O.C. 3VC0080-TR-2,
3VC0081, 3VC0082
3VC0081E

NE CORNER SECTION 33
SURVEY SPIKE (FOUND)
MON. REC. 200900004222



LINE LEGEND 3VC0081

1	S 01°31'39" E	1237.90'
2	N 88°28'21" E	55.24'
3	N 88°25'55" E	10.89'
8	S 01°34'25" E	418.00'
9	S 88°25'55" W	10.93'
10	N 01°34'05" W	418.00'

LINE LEGEND 3VC0081 T.E.

4	S 01°31'39" E	1558.03'
5	N 88°28'21" E	66.39'
6	N 88°25'35" E	40.00'
7	S 01°34'25" E	40.00'
20	S 88°25'35" W	40.00'
21	N 01°34'25" W	40.00'

LINE LEGEND 3VC0080E

15	N 01°34'25" W	69.94'
16	N 01°34'25" W	80.00'
17	N 88°25'35" E	35.00'
18	S 01°34'25" E	80.00'
19	S 88°25'35" W	35.00'

LINE LEGEND 3VC0082

14	N 01°34'05" E	216.50'
12	N 88°25'55" E	11.20'
13	R=11920.00' L=88.97' CHORD BRG = S 01°21'35" E	88.97'
22	S 01°34'25" E	127.53'
3	S 88°25'55" W	10.89'

PARCEL NO. 3VC0080
DAVID L. STEWART, SUCCESSOR TRUSTEE

TOTAL HOLDING = 68.990 AC. ±
TOTAL R.O.W. REQUIRED TRACT 1 = 0.926 AC. ±
TOTAL R.O.W. REQUIRED TRACT 2 = 0.805 AC. ±
REMAINDER = 67.259 AC. ±
TEMPORARY EASEMENT = 0.064 AC. ± (2800 S.F.)
TE PURPOSE = ENTRANCE RECONSTRUCTION

PARCEL NO. 3VC0081
DAVID L. STEWART, TRUSTEE

TOTAL HOLDING = 5.000 AC. ±
TOTAL R.O.W. REQUIRED = 0.105 AC. ±
REMAINDER = 4.895 AC. ±
TEMPORARY EASEMENT AREA = 0.037 AC. ±
PURPOSE : DRIVEWAY CONSTRUCTION

PARCEL NO. 3VC0082
TOD D. STEWART, et ux

TOTAL HOLDING = 2.590 AC. ±
TOTAL R.O.W. REQUIRED = 0.054 AC. ±
REMAINDER = 2.536 AC. ±

STATE OF ILLINOIS)
COUNTY OF MORGAN) S.S.
I, TIMOTHY C. QUIGG, HEREBY CERTIFY THAT I AM A PROFESSIONAL LAND SURVEYOR OF THE STATE OF ILLINOIS, THAT THE SURVEY OF PROPOSED IL RTE 47 WAS MADE BY ME OR UNDER MY DIRECTION AND THAT THE SURVEY IS TRUE AND COMPLETE AS SHOWN TO THE BEST OF MY KNOWLEDGE AND BELIEF, THAT ALL MONUMENTS AND MARKS ARE OF THE CHARACTER AND OCCUPY THE POSITION SHOWN THEREON, AND ARE SUFFICIENT TO ENABLE THE SURVEY TO BE RETRACED, THAT THIS PROFESSIONAL SERVICE CONFORMS TO THE CURRENT ILLINOIS MINIMUM STANDARDS FOR A BOUNDARY SURVEY.

DATED THIS 17th DAY OF DECEMBER 2012 A.D.

ILLINOIS PROFESSIONAL LAND SURVEYOR NO. 3063
TIMOTHY C. QUIGG

STATE OF ILLINOIS
DEPARTMENT OF TRANSPORTATION

RIGHT OF WAY PLANS
PROJECT: IL RTE 47
JOB NO. R-93-003-08
KENDALL COUNTY
SCALE: 1" = 100'
SHEET NO. 28 OF 36 SHEETS
STA. 6609+89.41 TO STA. 6636+38.22

F.A.P. SHEET NO. 326
SECTION (109, 110IR-1)
COUNTY KENDALL
TOTAL SHEETS 619
SHEET NO. 295
CONTRACT NO. 66B84
FED. ROAD DIST. NO. ILLINOIS FED. AID PROJECT

HUTCHISON ENGINEERING, INC.
1801 W. LAFAYETTE AVE.
P.O. BOX 820
JACKSONVILLE, IL 62651
ILLINOIS PROFESSIONAL DESIGN
FIRM NO. 184-000825

NOTE: GRID DISTANCES AND BEARINGS SHOWN HEREON ARE REFERENCED TO THE ILLINOIS STATE PLANE COORDINATE SYSTEM, EAST ZONE (NAD 83) 2007 ADJ ALL AREAS BASED ON GROUND DISTANCES GRID TO GROUND FACTOR = 1.00004933 GROUND TO GRID FACTOR = 0.99995067

FILE NAME: c:\pwork\work\pwork\duncanbd\8409210\0303808-sh-t-IL47-rwp\lan28.dgn	USER NAME: duncanbd	DESIGNED: -	REVISED: - CHANGED 8/82 MKB 2/25/14
PLOT SCALE: 200.0000' / in.	CHECKED: -	REVISOR: -	REVISED: - CHANGED 8/82 PVB 2/26/14
PLOT DATE: 8/7/2014	DATE: -	REVISOR: -	REVISED: -