

NW 1/4 OF SEC. 9, T.35 N., R.7 E. OF THE 3RD P.M.

3VC0064

KEJ FRIESTAD FARMS

TOTAL HOLDING = 70.970 AC.±
 TOTAL R.O.W. REQUIRED = 0.466 AC.±
 AREA IN EXIST. R.O.W. = 0.255 AC.±
 NET R.O.W. REQUIRED = 0.211 AC.±
 REMAINDER = 70.504 AC.±

3VC0065

WILLIAM L. BEHRENS, et ux.

TOTAL HOLDING = 0.333 AC.±
 TOTAL R.O.W. REQUIRED = 0.333 AC.±
 REMAINDER = 0.000 AC.±

3VC0067

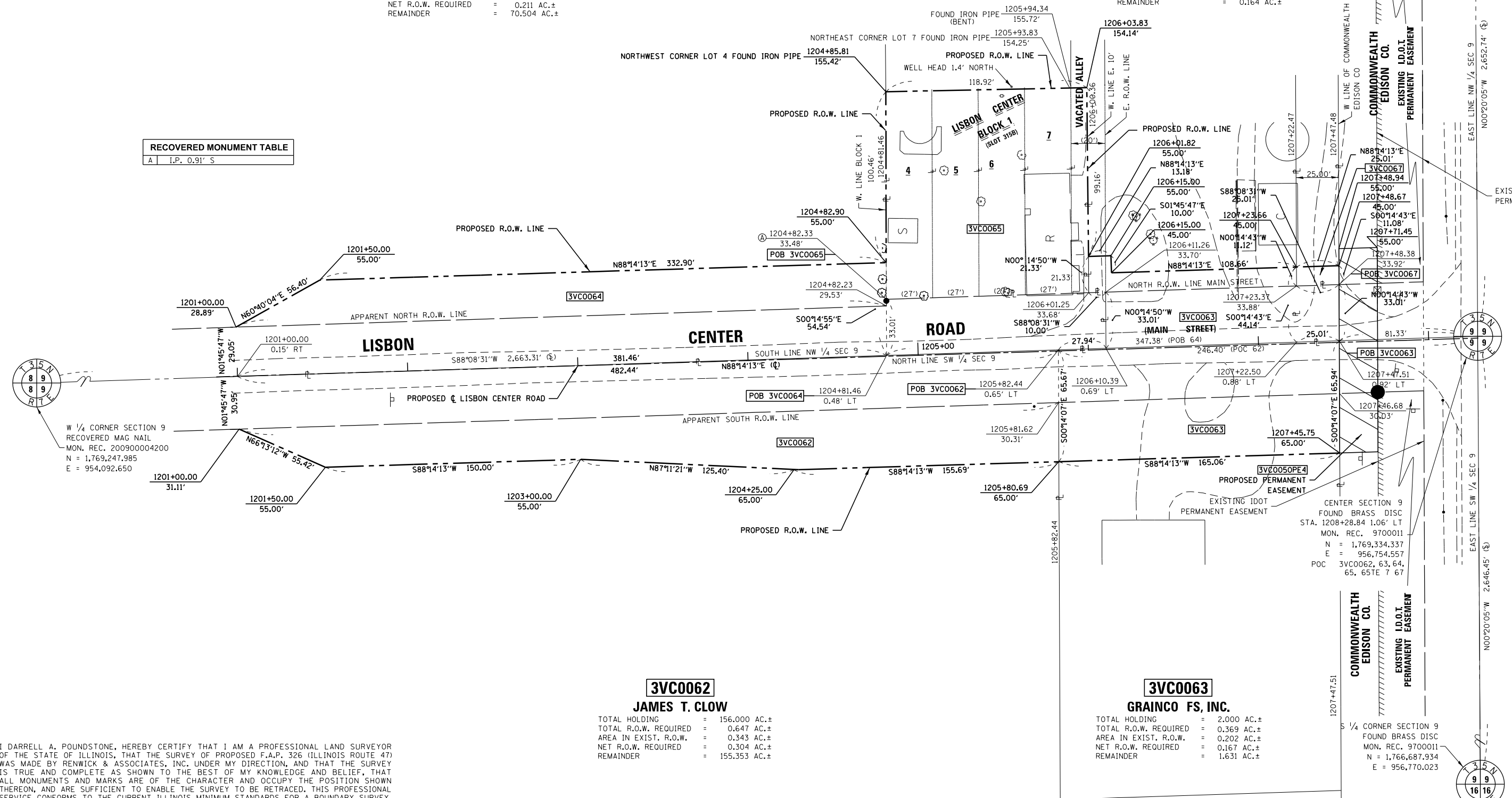
THE FOX & ILLINOIS UNION RAILWAY COMPANY

TOTAL HOLDING = 0.170 AC.±
 TOTAL R.O.W. REQUIRED = 0.006 AC.± (278 SO. FT.)
 REMAINDER = 0.164 AC.±

N 1/4 SECTION 9
 FOUND BRASS DISC
 MON. REC. 907010
 N = 1,771,987.027
 E = 956,739.052

RECOVERED MONUMENT TABLE

A	I.P. 0.91' S
---	--------------



W 1/4 CORNER SECTION 9
 RECOVERED MAG NAIL
 MON. REC. 200900004200
 N = 1,769,247.985
 E = 954,092.650

CENTER SECTION 9
 FOUND BRASS DISC
 STA. 1208+28.84 1.06' LT
 MON. REC. 9700011
 N = 1,769,334.337
 E = 956,754.557
 POC 3VC0062, 63, 64,
 65, 65TE 7 67

3VC0062

JAMES T. CLOW

TOTAL HOLDING = 156.000 AC.±
 TOTAL R.O.W. REQUIRED = 0.647 AC.±
 AREA IN EXIST. R.O.W. = 0.343 AC.±
 NET R.O.W. REQUIRED = 0.304 AC.±
 REMAINDER = 155.353 AC.±

3VC0063

GRAINCO FS, INC.

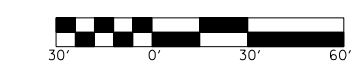
TOTAL HOLDING = 2.000 AC.±
 TOTAL R.O.W. REQUIRED = 0.369 AC.±
 AREA IN EXIST. R.O.W. = 0.202 AC.±
 NET R.O.W. REQUIRED = 0.167 AC.±
 REMAINDER = 1.631 AC.±

I DARRELL A. POUNDSTONE, HEREBY CERTIFY THAT I AM A PROFESSIONAL LAND SURVEYOR OF THE STATE OF ILLINOIS, THAT THE SURVEY OF PROPOSED F.A.P. 326 (ILLINOIS ROUTE 47) WAS MADE BY RENWICK & ASSOCIATES, INC. UNDER MY DIRECTION, AND THAT THE SURVEY IS TRUE AND COMPLETE AS SHOWN TO THE BEST OF MY KNOWLEDGE AND BELIEF, THAT ALL MONUMENTS AND MARKS ARE OF THE CHARACTER AND OCCUPY THE POSITION SHOWN THEREON, AND ARE SUFFICIENT TO ENABLE THE SURVEY TO BE RETRACED, THIS PROFESSIONAL SERVICE CONFORMS TO THE CURRENT ILLINOIS MINIMUM STANDARDS FOR A BOUNDARY SURVEY.

DATE: _____ ILLINOIS PROFESSIONAL LAND SURVEYOR NO. 3485
 SURVEY BOOK NO. _____
 11-30-2012 EXPIRATION DATE

SW 1/4 OF SEC. 9, T.35 N., R.7 E. OF THE 3RD P.M.

- NOTES:
- ALL BEARINGS AND DISTANCES (GRID) ARE REFERENCED TO THE ILLINOIS STATE PLANE COORDINATE SYSTEM, EAST ZONE (N.A.D. 83-2007 ADJ.)
 - GRID DISTANCE (AS LABELED) x 1.00004933 = GROUND DISTANCE



Renwick & Associates, Inc.
 Professional Engineers & Land Surveyors
 1304 Genl Circle, Suite 4 • Ottawa, IL 61350

FILE NAME	USER NAME = MITCHELL	DESIGNED -	REVISED - PAR. 65 12/9/13 MKB
		DRAWN -	REVISED - PAR. 65 05/28/14 PVB
	PLOT SCALE = 1" = 30'	CHECKED -	REVISED -
	PLOT DATE = DECEMBER 17, 2012	DATE -	REVISED -

STATE OF ILLINOIS
 DEPARTMENT OF TRANSPORTATION

RIGHT OF WAY PLANS

PROJECT	JOB NO. R-93-003-08
SCALE: 1"=30'	STA. 1201+00 TO STA. 1208+28.84
SHEET NO. 33 OF 36 SHEETS	

F.A.P. RTE. (IL 47)	SECTION (109, 110R-1)	COUNTY (KENDALL)	TOTAL SHEETS (619)	SHEET NO. (300)
CONTRACT NO. 66B84			FED. ROAD DIST. NO. ILLINOIS FED. AID PROJECT	