



SW 1/4 OF SEC. 33, T. 36 N., R. 7 E. OF THE 3RD P.M.

SE 1/4 OF SEC. 33, T. 36 N., R. 7 E. OF THE 3RD P.M.

LINE LEGEND 3VC0050PE6

A-V	S 88°06'25" W	58.35'
V-W	R=44,531.13', L=48.75', C=48.75' CHORD BRG=S 01°04'25" E	
W-S	S 88°07'53" W	22.50'
S-R	R=44,508.63', L=48.74', C=48.74' CHORD BRG=N 01°04'23" W	
R-U	N 88°06'25" E	3.00'
U-T	R=44,511.63', L=51.27', C=51.27' CHORD BRG=N 01°08'15" W	
T-X	N 88°07'53" E	19.50'
X-V	R=44,531.13', L=51.26', C=51.26' CHORD BRG=S 01°08'16" E	

LINE LEGEND 3VC0074TE1

A-B	S 88°06'25" W	105.61'
B-N	R=44,483.88', L=35.24', C=35.24' CHORD BRG=S 01°04'53" E	
N-C	R=44,483.88', L=13.49', C=13.49' CHORD BRG=S 01°03'00" E	
C-D	S 88°07'53" W	371.43'
D-E	N 01°52'07" W	13.33'
E-N	N 88°06'25" E	371.63'

LINE LEGEND 3VC0074TE2

A-J	S 88°06'25" W	102.61'
J-K	R=44,486.88', L=34.77', C=34.77' CHORD BRG=N 01°07'35" W	
K-L	S 88°06'25" W	65.56'
L-M	N 01°52'07" W	16.54'
M-I	N 88°07'53" E	65.77'
I-K	R=44,486.88', L=16.51', C=16.51' CHORD BRG=S 01°09'34" E	

LINE LEGEND 3VC0075

A-U	S 88°06'25" W	77.85'
U-R	S 88°06'25" W	3.00'
R-S	R=44,508.63', L=48.74', C=48.74' CHORD BRG=S 01°04'23" E	
S-C	S 88°07'53" W	24.75'
C-B	R=44,483.88', L=48.73', C=48.73' CHORD BRG=N 01°04'22" W	
B-J	N 88°06'25" E	3.00'
J-I	R=44,486.88', L=51.28', C=51.28' CHORD BRG=N 01°08'14" W	
I-T	N 88°07'53" E	24.75'
T-U	R=44,511.63', L=51.27', C=51.27' CHORD BRG=S 01°08'15" E	

LINE LEGEND 3VC0076-TR-1

A-G	S 88°06'25" W	295.64'
G-F	S 88°06'25" W	332.07'
F-P	N 01°52'07" W	34.76'
P-Q	N 69°37'37" E	52.73'
Q-H	N 88°07'53" E	282.59'
H-G	S 01°17'52" E	51.36'

PARCEL NO. 3VC0076
JOHN E. STEWART
LIVING TRUST, et al
FOR AREAS, SEE SHEET NO. 27

PARCEL NO. 3VC0075
FOX & ILLINOIS UNION
RAILWAY COMPANY
TOTAL HOLDING = 0.680 AC. ±
TOTAL R.O.W. REQUIRED = 0.057 AC. ± (2475 S.F.)
AREA IN EXISTING R.O.W. = 0.040 AC. ± (1733 S.F.)
NET R.O.W. REQUIRED = 0.017 AC. ± (742 S.F.)
REMAINDER = 0.623 AC. ±

PROPERTY MONUMENTS FOUND
1507+68.68, 36.76' RT, IRON PIN
1507+70.43, 33.78' LT, IRON PIN
1508+88.31, 31.69' RT, IRON PIN
1508+89.76, 28.60' LT, IRON PIN

PARCEL NO. 3VC0050
COMMONWEALTH EDISON COMPANY
FOR AREAS, SEE SHEET NO. 19

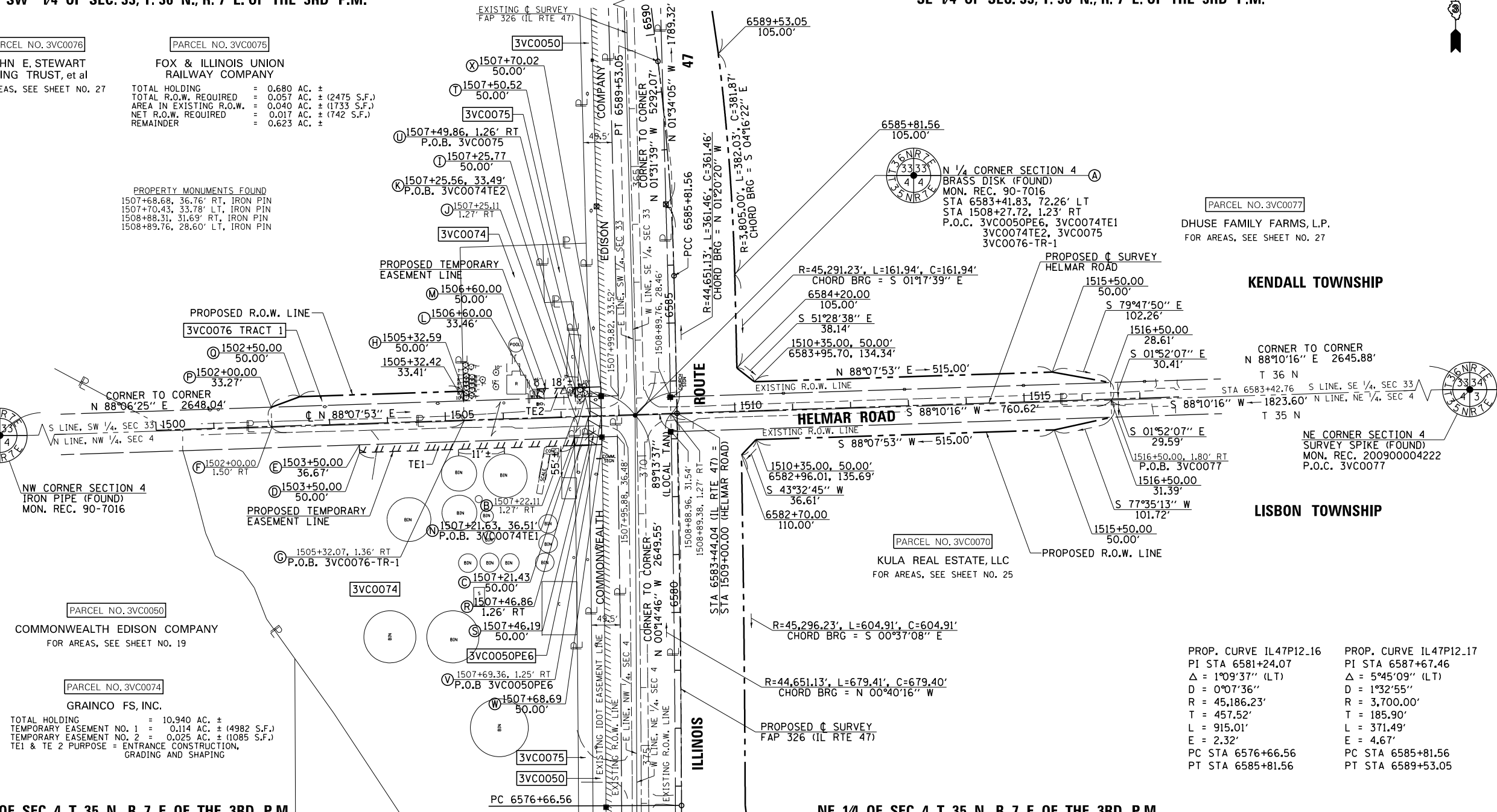
PARCEL NO. 3VC0074
GRAINCO FS, INC.

PARCEL NO. 3VC0075
KULA REAL ESTATE, LLC
FOR AREAS, SEE SHEET NO. 25

PARCEL NO. 3VC0077
DHUSE FAMILY FARMS, L.P.
FOR AREAS, SEE SHEET NO. 27

NW 1/4 OF SEC. 4, T. 35 N., R. 7 E. OF THE 3RD P.M.

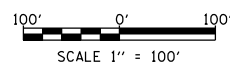
NE 1/4 OF SEC. 4, T. 35 N., R. 7 E. OF THE 3RD P.M.



STATE OF ILLINOIS)
COUNTY OF MORGAN) S.S.
I, TIMOTHY C. QUIGG, HEREBY CERTIFY THAT I AM A PROFESSIONAL LAND SURVEYOR OF THE STATE OF ILLINOIS, THAT THE SURVEY OF PROPOSED IL RTE 47 WAS MADE BY ME OR UNDER MY DIRECTION AND THAT THE SURVEY IS TRUE AND COMPLETE AS SHOWN TO THE BEST OF MY KNOWLEDGE AND BELIEF, THAT ALL MONUMENTS AND MARKS ARE OF THE CHARACTER AND OCCUPY THE POSITION SHOWN THEREON, AND ARE SUFFICIENT TO ENABLE THE SURVEY TO BE RETRACED. THAT THIS PROFESSIONAL SERVICE CONFORMS TO THE CURRENT ILLINOIS MINIMUM STANDARDS FOR A BOUNDARY SURVEY.
DATED THIS 19th DAY OF MARCH 2013 A.D.
ILLINOIS PROFESSIONAL LAND SURVEYOR NO. 3063
TIMOTHY C. QUIGG

PROP. CURVE IL47P12.16
PI STA 6581+24.07
Δ = 1°09'37" (LT)
D = 0°07'36"
R = 45,186.23'
T = 457.52'
L = 915.01'
E = 2.32'
PC STA 6576+66.56
PT STA 6585+81.56

PROP. CURVE IL47P12.17
PI STA 6587+67.46
Δ = 5°45'09" (LT)
D = 1°32'55"
R = 3,700.00'
T = 185.90'
L = 371.49'
E = 4.67'
PC STA 6585+81.56
PT STA 6589+53.05



HUTCHISON ENGINEERING, INC.
1801 W. LAFAYETTE AVE.
P.O. BOX 820
JACKSONVILLE, IL 62651
ILLINOIS PROFESSIONAL DESIGN
FIRM NO. 184-000825

NOTE: GRID DISTANCES AND BEARINGS SHOWN HEREON ARE REFERENCED TO THE ILLINOIS STATE PLANE COORDINATE SYSTEM, EAST ZONE (NAD 83) 2007 ADJ ALL AREAS BASED ON GROUND DISTANCES GRID TO GROUND FACTOR = 1.00004933 GROUND TO GRID FACTOR = 0.99995067

FILE NAME: c:\pwork\pwork\tduncanbd\0409210\0303808-sh-t-IL47-rxp\lan36-Helmar Rd.dgn	USER NAME: duncanbd	DESIGNED: -	REVISED: - 3/19/2013	STATE OF ILLINOIS DEPARTMENT OF TRANSPORTATION	RIGHT OF WAY PLANS			F.A.P. RTE. 326	SECTION (109, 110IR-1)	COUNTY KENDALL	TOTAL SHEETS 619	SHEET NO. 303
PLOT SCALE: 200.0000' / in.	CHECKED: -	REVISED: -	SCALE: 1" = 100'		PROJECT SHEET NO. 36 OF 36 SHEETS	JOB NO. R-93-003-08	STA. 1502+00.00 TO STA. 1516+50.00	IL RTE 47	KENDALL CONTRACT NO. 66B84			
PLOT DATE: 8/7/2014	DATE: -	REVISED: -	FED. ROAD DIST. NO. ILLINOIS FED. AID PROJECT									