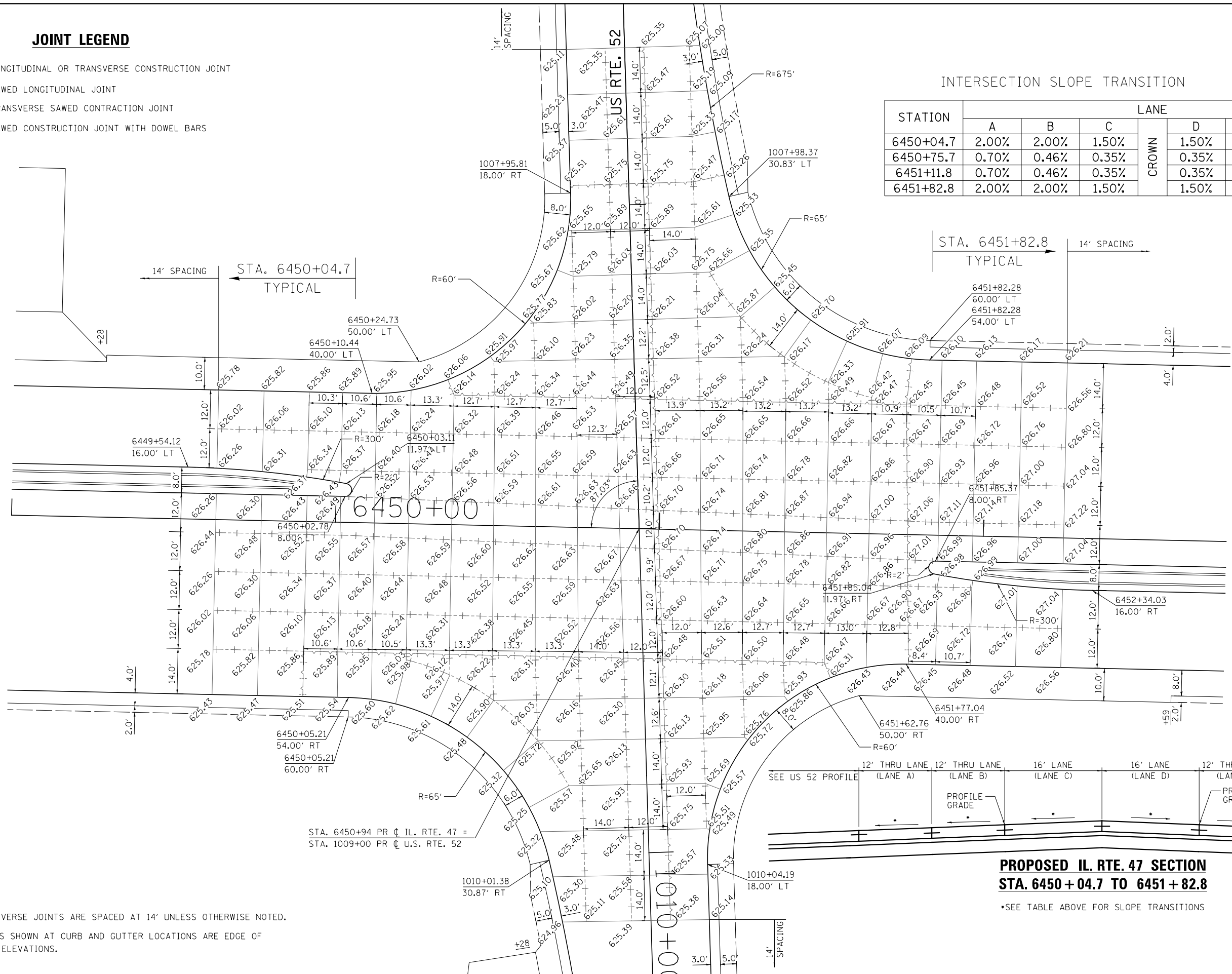


**JOINT LEGEND**

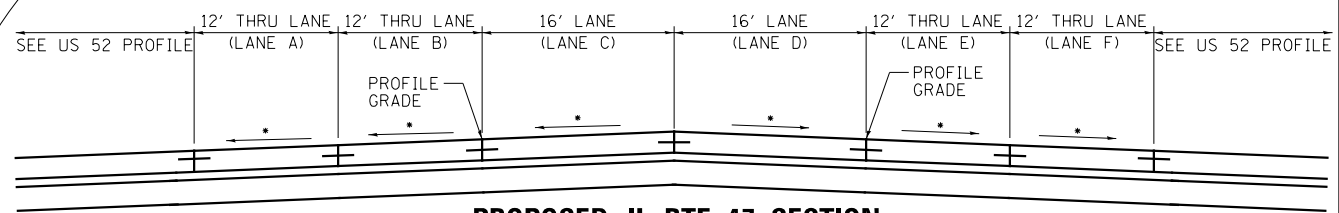
- LONGITUDINAL OR TRANSVERSE CONSTRUCTION JOINT
- SAWED LONGITUDINAL JOINT
- TRANSVERSE SAWED CONTRACTION JOINT
- SAWED CONSTRUCTION JOINT WITH DOWEL BARS

**INTERSECTION SLOPE TRANSITION**

STATION	LANE					
	A	B	C	D	E	F
6450+04.7	2.00%	2.00%	1.50%	1.50%	2.00%	2.00%
6450+75.7	0.70%	0.46%	0.35%	0.35%	0.59%	1.00%
6451+11.8	0.70%	0.46%	0.35%	0.35%	0.59%	1.00%
6451+82.8	2.00%	2.00%	1.50%	1.50%	2.00%	2.00%

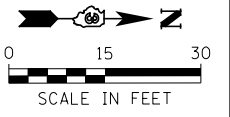


STA. 6451+82.8  
TYPICAL  
14' SPACING



**PROPOSED IL. RTE. 47 SECTION  
STA. 6450 + 04.7 TO 6451 + 82.8**

\*SEE TABLE ABOVE FOR SLOPE TRANSITIONS



- NOTES:
- ALL TRANSVERSE JOINTS ARE SPACED AT 14' UNLESS OTHERWISE NOTED.
  - ELEVATIONS SHOWN AT CURB AND GUTTER LOCATIONS ARE EDGE OF PAVEMENT ELEVATIONS.

FILE NAME = V:\3195\66884 (North Section)\CADD Sheets\0366884-sh1-joint-04.dgn	USER NAME = bdecreane	DESIGNED - RC	REVISED -	<b>STATE OF ILLINOIS DEPARTMENT OF TRANSPORTATION</b>	<b>IL. RTE. 47 &amp; U.S. RTE. 52 INTERSECTION DETAIL AND JOINTING PLAN</b>	F.A.P. RTE. 326	SECTION (109, 110R-1)	COUNTY KENDALL	TOTAL SHEETS 619	SHEET NO. 307		
PLOT SCALE = 30.0000' / in.	CHECKED - ST	REVISIED -	REVISIED -			SCALE: 1"=15'	SHEET NO. 4 OF 10 SHEETS	STA. 6449+00	TO STA. 6452+75	CONTRACT NO. 66884		
*MODELNAME*	PLOT DATE = 7/14/2014	DATE - 7/01/2014	REVISIED -			ILLINOIS FED. AID PROJECT						