
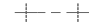


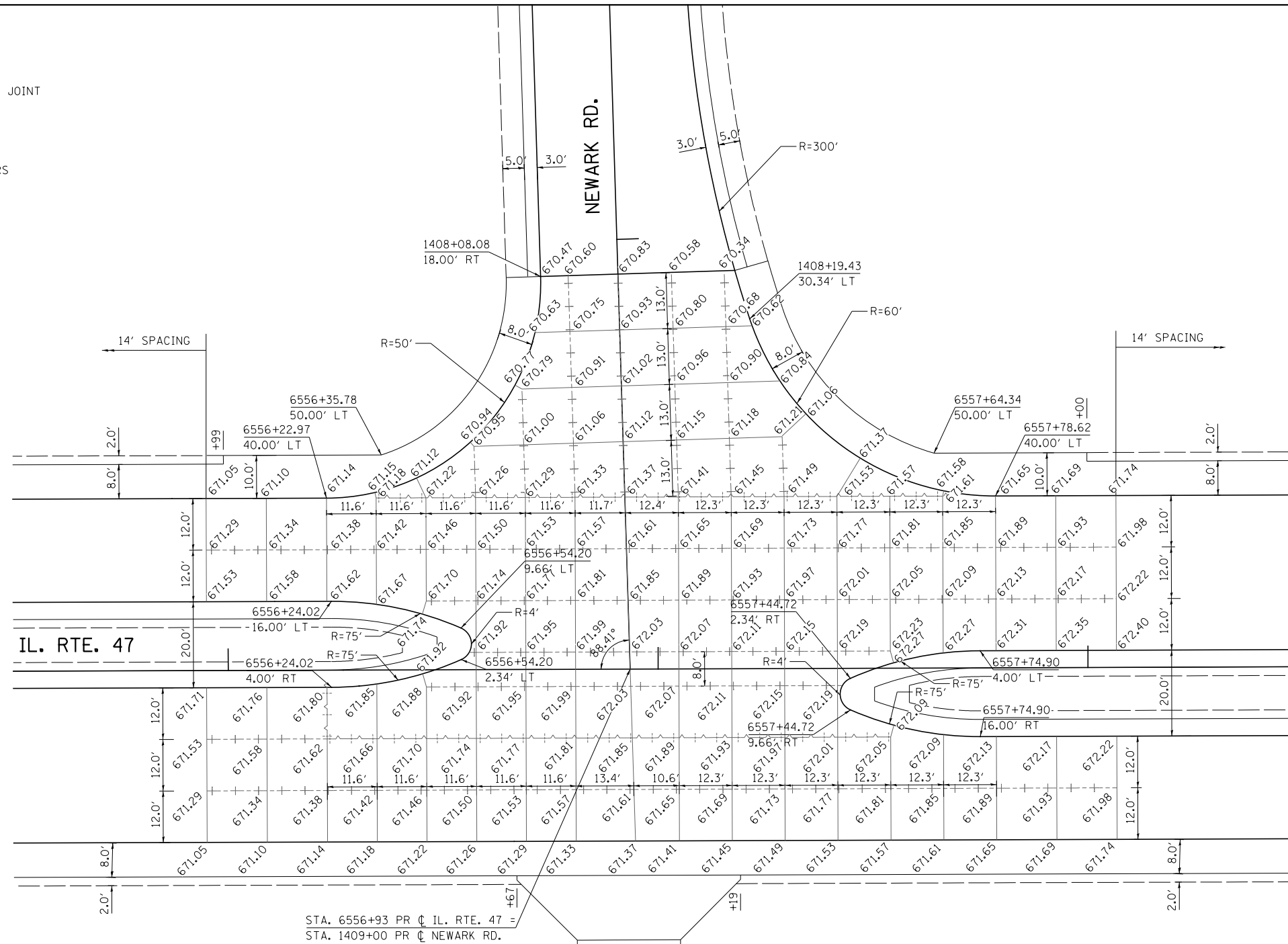


JOINT LEGEND

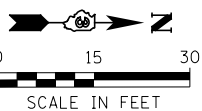
-  LONGITUDINAL OR TRANSVERSE CONSTRUCTION JOINT
-  SAWED LONGITUDINAL JOINT
-  TRANSVERSE SAWED CONTRACTION JOINT
-  SAWED CONSTRUCTION JOINT WITH DOWEL BARS



STA. 6556+93 PR C IL. RTE. 47
 STA. 1409+00 PR C NEWARK RD.

NOTES:

1. ALL TRANSVERSE JOINTS ARE SPACED AT 14' UNLESS OTHERWISE NOTED.
2. ELEVATIONS SHOWN AT CURB AND GUTTER LOCATIONS ARE EDGE OF PAVEMENT ELEVATIONS.



FILE NAME = V:\3195\66884 (North Section)\CADD Sheets\ND366884-sh1-joint-08.dgn	USER NAME = bdecreene	DESIGNED - RC	REVISED -	STATE OF ILLINOIS DEPARTMENT OF TRANSPORTATION	IL. RTE. 47 & NEWARK RD. INTERSECTION DETAIL AND JOINTING PLAN			F.A.P. RTE. 326	SECTION (109, 110R-1)	COUNTY KENDALL	TOTAL SHEETS 619	SHEET NO. 311
MODELNAME	PLOT SCALE = 30.0000' / in.	CHECKED - ST	REVISED -		SCALE: 1"=15'	SHEET NO. 8 OF 10 SHEETS	STA. 6555+50 TO STA. 6558+50	CONTRACT NO. 66884				
	PLOT DATE = 7/14/2014	DATE - 7/01/2014	REVISED -		ILLINOIS FED. AID PROJECT							