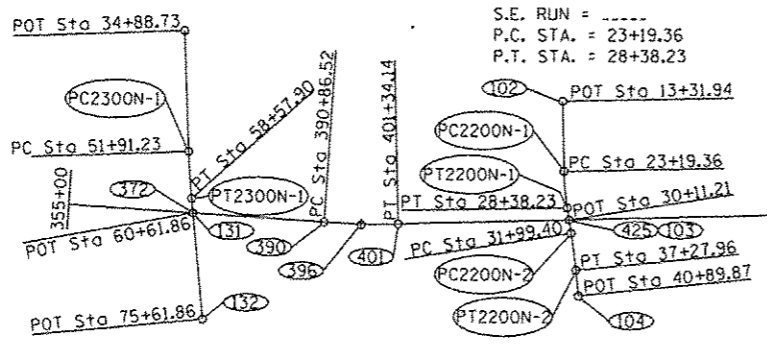




EXIST. CURVE 2300N-1
 PI STA. = 55+24.66
 $\Delta = 3^\circ 19' 58''$ (LT)
 $D = 0^\circ 30' 00''$
 $R = 11,461.42'$
 $T = 333.43'$
 $L = 666.67'$
 $E = 4.85'$
 $e = \text{-----}$
 $T.R. = \text{-----}$
 $S.E. RUN = \text{-----}$
 P.C. STA. = 51+91.23
 P.T. STA. = 58+57.90

EXIST. CURVE 2200N-1
 PI STA. = 25+79.20
 $\Delta = 7^\circ 50' 53''$ (LT)
 $D = 1^\circ 30' 45''$
 $R = 3,787.99'$
 $T = 259.84'$
 $L = 518.86'$
 $E = 8.90'$
 $e = \text{-----}$
 $T.R. = \text{-----}$
 $S.E. RUN = \text{-----}$
 P.C. STA. = 23+19.36
 P.T. STA. = 28+38.23

EXIST. CURVE 1571R0-10
 PI STA. = 537+87.12
 $\Delta = 43^\circ 04' 11''$ (LT)
 $D = 1^\circ 29' 59''$
 $R = 3,820.36'$
 $T = 1,507.56'$
 $L = 2,871.79'$
 $E = 286.69'$
 $e = \text{-----}$
 $T.R. = \text{-----}$
 $S.E. RUN = \text{-----}$
 P.C. STA. = 522+79.56
 P.T. STA. = 551+51.35



EXIST. CURVE 1571R0-8
 PI STA. = 396+10.69
 $\Delta = 5^\circ 14' 29''$ (LT)
 $D = 0^\circ 30' 01''$
 $R = 11,452.26'$
 $T = 524.18'$
 $L = 1,047.63'$
 $E = 11.99'$
 $e = R.C.$
 $P.C. STA. = 390+86.52$
 $P.T. STA. = 401+34.14$
 SUPER TRANSITIONS
 STA. 389+86.63 TO STA. 390+86.63
 STA. 401+34.26 TO STA. 402+34.26

EXIST. CURVE 2200N-2
 PI STA. = 34+63.75
 $\Delta = 3^\circ 13' 12''$ (RT)
 $D = 0^\circ 36' 33''$
 $R = 9,404.77'$
 $T = 264.35'$
 $L = 528.56'$
 $E = 3.71'$
 $e = \text{-----}$
 $T.R. = \text{-----}$
 $S.E. RUN = \text{-----}$
 P.C. STA. = 31+99.40
 P.T. STA. = 37+27.96

EXIST. CURVE 1571R0-9
 PI STA. = 501+63.48
 $\Delta = 43^\circ 02' 08''$ (RT)
 $D = 1^\circ 30' 00''$
 $R = 3,820.00'$
 $T = 1,506.10'$
 $L = 2,869.24'$
 $E = 286.18'$
 $e = 0.0458$
 $P.C. STA. = 486+57.38$
 $P.T. STA. = 515+26.62$
 SUPER TRANSITIONS
 STA. 485+20.21 TO STA. 487+03.21
 STA. 514+80.83 TO STA. 516+63.83

BENCHMARKS						
NO.	NORTHING	EASTING	STATION	OFFSET	ELEVATION	DESCRIPTION
356			356+00.00	115' RT	656.80	80d SPIKE IN FENCE POST
361			361+29.00	115' RT	661.23	TOP ROW MARKER
366			366+07.00	93.5' RT	663.76	80d SPIKE IN FENCE POST
370			370+00.00	114.5' RT	659.80	CHIS "TJ" TOP NW COR HEADWALL
374			374+09.00	74' RT	659.82	CHIS "TJ" TOP UNDERDRAIN HDWL
379			379+00.00	87' RT	656.27	CHIS "TJ" TOP NW COR HEADWALL
384			383+71.00	110' LT	659.70	80d SPIKE IN FENCE POST
390	1512779.7360	1076822.7710	390+86.36	0.1361' LT	653.27	SURV MARK-BRASS PLUG
396	1512256.6930	1076787.0750	396+10.26	11.98' RT	654.32	SURV MARK-BRASS PLUG
401	1511732.5890	1076799.3890	401+34.14	0.0441' RT	650.10	SURV MARK-BRASS PLUG
406			406+12.00	100' RT	649.24	80d SPIKE IN FENCE POST
411			410+94.00	100' RT	648.49	80d SPIKE IN FENCE POST
416			415+58.00	100' RT	647.40	80d SPIKE IN FENCE POST
421			420+40.00	100' RT	647.81	80d SPIKE IN FENCE POST
427			427+00.00	94' RT	646.07	CHIS "TJ" TOP NW COR HEADWALL
432			431+83.00	100' RT	649.01	80d SPIKE IN FENCE POST
437			437+00.00	100' RT	649.07	80d SPIKE IN FENCE POST
441			441+00.00	94' RT	644.28	CHIS "TJ" TOP NW COR HEADWALL
446			446+10.00	121' RT	648.20	80d SPIKE IN FENCE POST
451			451+21.00	120' RT	646.66	80d SPIKE IN FENCE POST
456			455+48.00	68' RT	648.47	CHIS "TJ" TOP NW COR WINGWALL
459			459+00.00	90' RT	642.64	CHIS "TJ" TOP NW COR HEADWALL
464			463+96.00	115' RT	646.12	80d SPIKE IN FENCE POST
469			468+45.00	115' RT	647.82	80d SPIKE IN FENCE POST
474			473+49.00	115' RT	649.39	80d SPIKE IN FENCE POST
480			480+00.00	87' RT	645.17	CHIS "TJ" TOP NW COR HEADWALL
486	1503211.9660	1077001.1390	486+57.67	0.6510' LT	646.67	SURV MARK-BRASS PLUG
490			490+13.00	115' RT	647.48	80d SPIKE IN FENCE POST
495			495+00.00	86' RT	647.88	CHIS "TJ" TOP NW COR HEADWALL
507			507+51.00	27' RT	653.66	CHIS "TJ" TOP SE COR WINGWALL
510			510+00.00	91' RT	646.96	CHIS "TJ" TOP NW COR HEADWALL
515	1500581.5510	1076034.7870	515+26.56	0.4302' LT	648.41	SURV MARK-BRASS PLUG

HORIZONTAL CONTROL POINTS					
POINT	NORTHING	EASTING	STATION	OFFSET	DESCRIPTION
2300N					
130	1514742.5790	1079517.9000	34+88.73		POT
PC2300N-1	1514684.8132	1077816.3849	51+91.23		POT
PT2300N-1	1514642.8338	1077151.1348	58+57.90		POT
131	1514624.0749	1076948.0369	60+61.86		POT
132	1514486.1160	1075454.3946	75+61.86		POT
2200N					
102	1509410.9280	1078531.0410	13+31.94		POT
PC2200N-1	1509393.6337	1077543.7667	23+19.36		PC
PT2200N-1	1509349.0993	1077027.2240	28+38.23		PT
103	1509322.4813	1076856.3028	30+11.21		POT
PC2200N-2	1509293.5229	1076670.3534	31+99.40		PC
PT2200N-2	1509226.9043	1076146.0794	37+27.96		PT
104	1509191.3890	1075785.9136	40+89.87		POT

HORIZONTAL CONTROL POINTS - I-57					
POINT	NORTHING	EASTING	STATION	OFFSET	DESCRIPTION
BRIDGE DECK					
372	1514624.0740	1076948.0370	372+37.78	0.0054' LT	
390	1512779.7360	1076822.7710	390+86.36	0.1361' LT	PC-PERMANENT SURVEY MARKER
396	1512256.6930	1076787.0750	396+10.26	11.984' RT	PI
401	1511732.5890	1076799.3890	401+34.14	0.0441' RT	PT-PERMANENT SURVEY MARKER
425	1509322.4730	1076856.3930	425+44.93	0.0899' LT	BRIDGE DECK
486	1503211.9660	1077001.1390	486+57.67	0.6510' LT	PC-PERMANENT SURVEY MARKER
515	1500581.5510	1076034.7870	515+26.56	0.4302' LT	PT-PERMANENT SURVEY MARKER
522	1500019.0190	1075534.2040	522+79.57	0.6751' LT	PC-PERMANENT SURVEY MARKER
537	1498794.7150	1074800.4300	537+15.52	0.1623' LT	POC-PERMANENT SURVEY MARKER
541	1498365.7800	1074673.1210	541+63.34	2.1867' LT	BRIDGE DECK
551	1497386.5490	1074567.6140	551+51.27	0.0012' LT	PT-PERMANENT SURVEY MARKER
580	1494538.5800	1074636.5080	580+00.07	0.0070' RT	POT-PERMANENT SURVEY MARKER
618	1490740.1760	1074728.3960	617+99.58	0.0156' RT	POT-PERMANENT SURVEY MARKER
669	1485629.2630	1074852.0630	669+11.99	0.0006' LT	PC-PERMANENT SURVEY MARKER