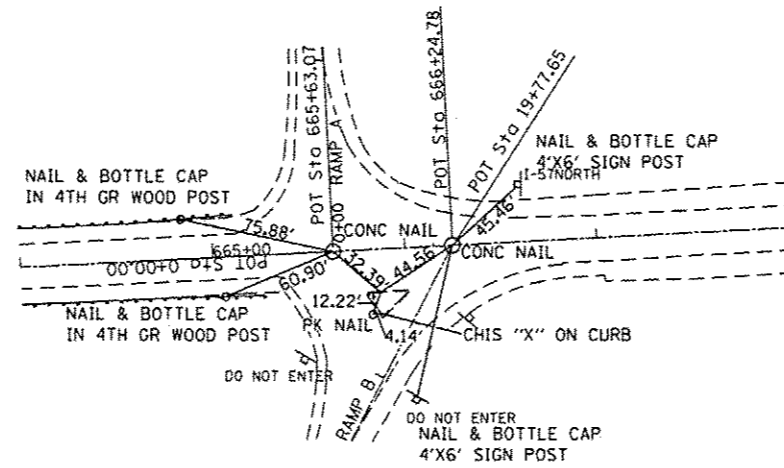
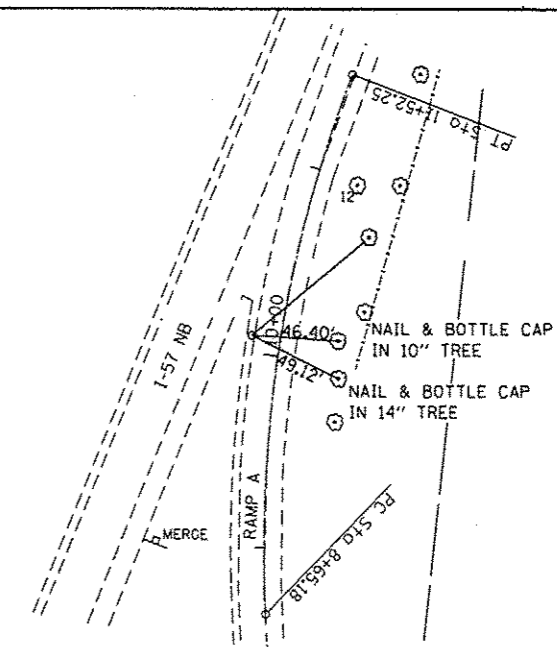


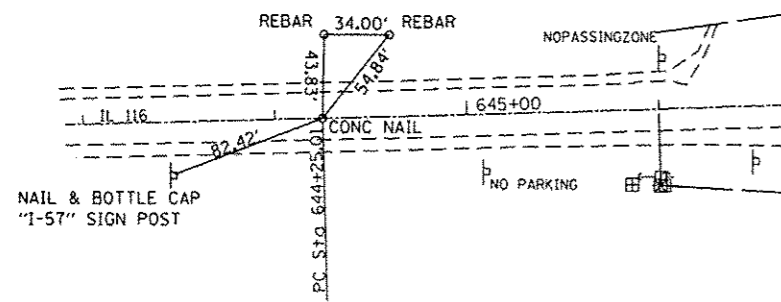
PNT 78 POT STA. 0+00 RAMP D
PNT 82 POT STA. 653+42.34 IL 116



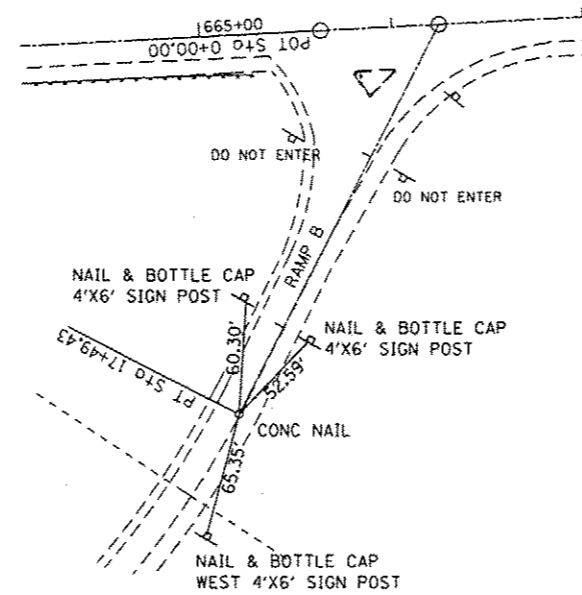
PNT 84 POT STA. 665+63.07 IL 116 = PNT 70 STA. 0+00 RAMP A
PNT 85 POT STA. 666+24.78 IL 116 = PNT 73 STA. 19+77.65 RAMP B
POINT 5013



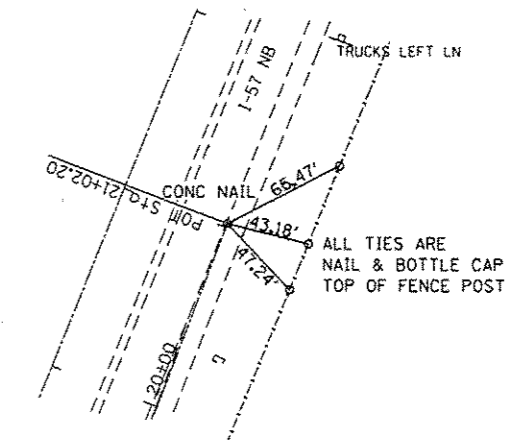
PNT 103 PI STA. 10+10.82 RAMP A



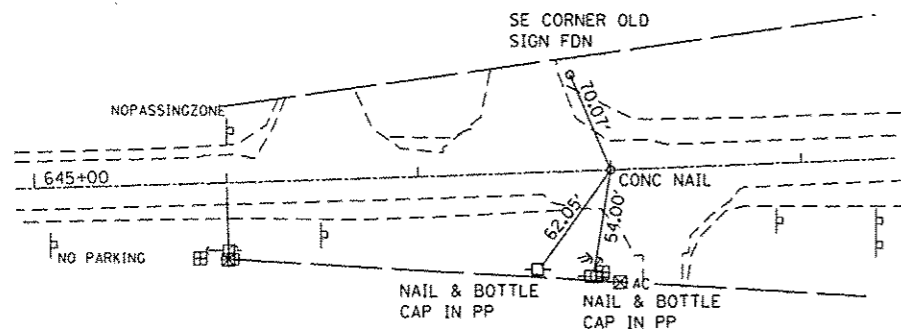
PNT PC116CL-1 PC STA. 644+25.01 IL 116



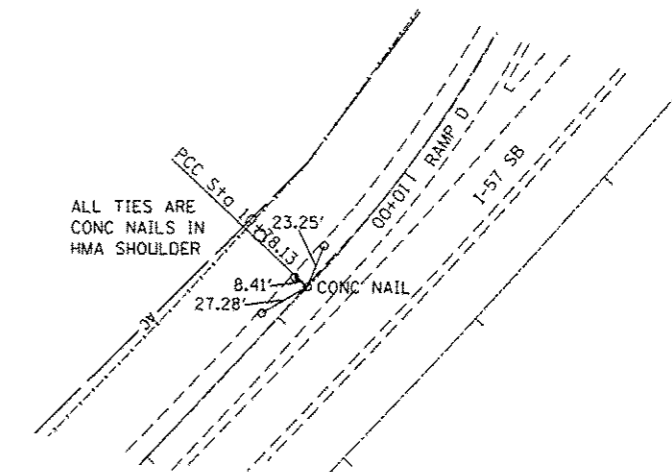
PNT PT116RMB-3 PT STA. 17+49.43 RAMP B



PNT 71 POT STA. 21+02.20 RAMP A



PNT 101 PI STA. 648+00.04 IL 116



PNT PT116RMD-1 PT = PC116RMD-2 PC STA. 10+78.13 RAMP D

FILE NAME : c:\p\work\p\work\dunocanbd\0315542\036\CS3-shs-alignment-ties.dgn	USER NAME : dunocanbd	DESIGNED - DRAWN -	REVISED - REVISED -	STATE OF ILLINOIS DEPARTMENT OF TRANSPORTATION	ALIGNMENT & SURVEY TIES		F.A.I. RTE. 57	SECTION 138-JRS-2	COUNTY JROQUOIS	TOTAL SHEETS 186	SHEET NO. 21	
PLOT SCALE = 100.0000' / in.		CHECKED -	REVISED -		SCALE:	SHEET NO. 5 OF 6 SHEETS	STA. TO STA.	CONTRACT NO. 66C53				
PLOT DATE = 6/10/2014		DATE -	REVISED -		ILLINOIS FED. AID PROJECT							