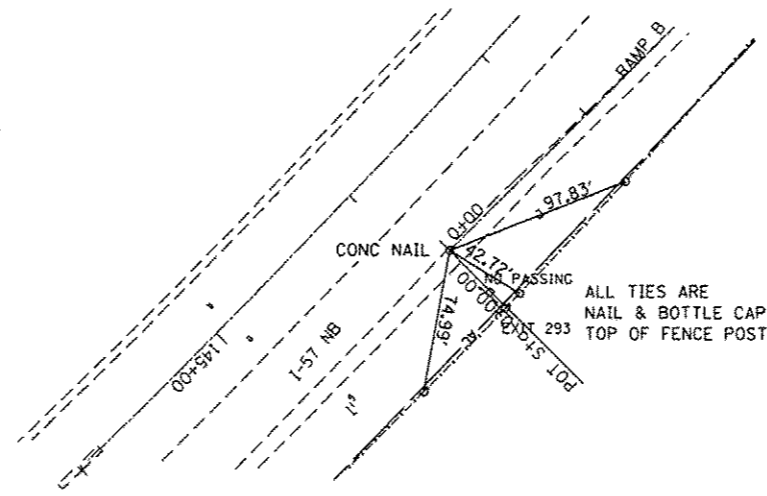
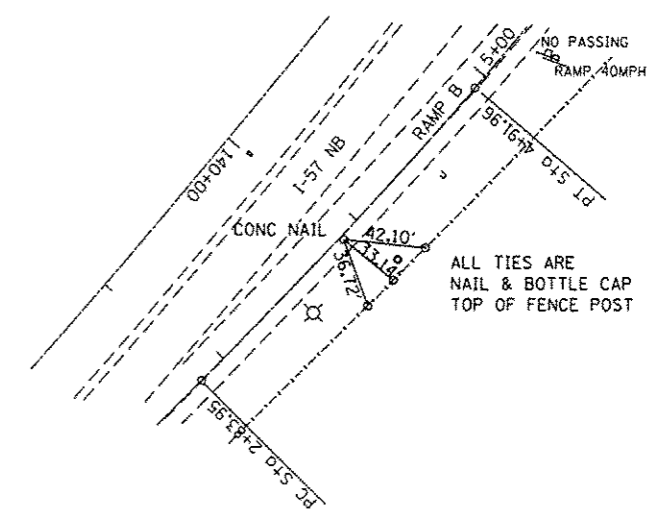


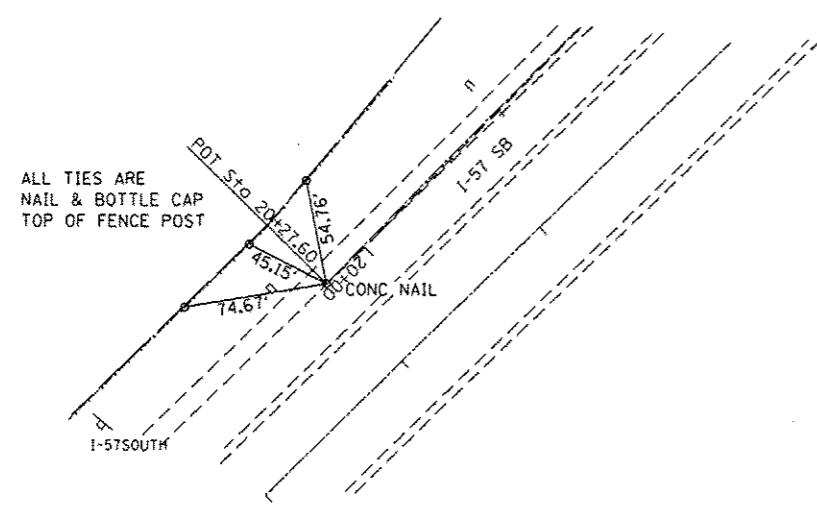
PNT 111 PI STA. 13+05.92 RAMP D



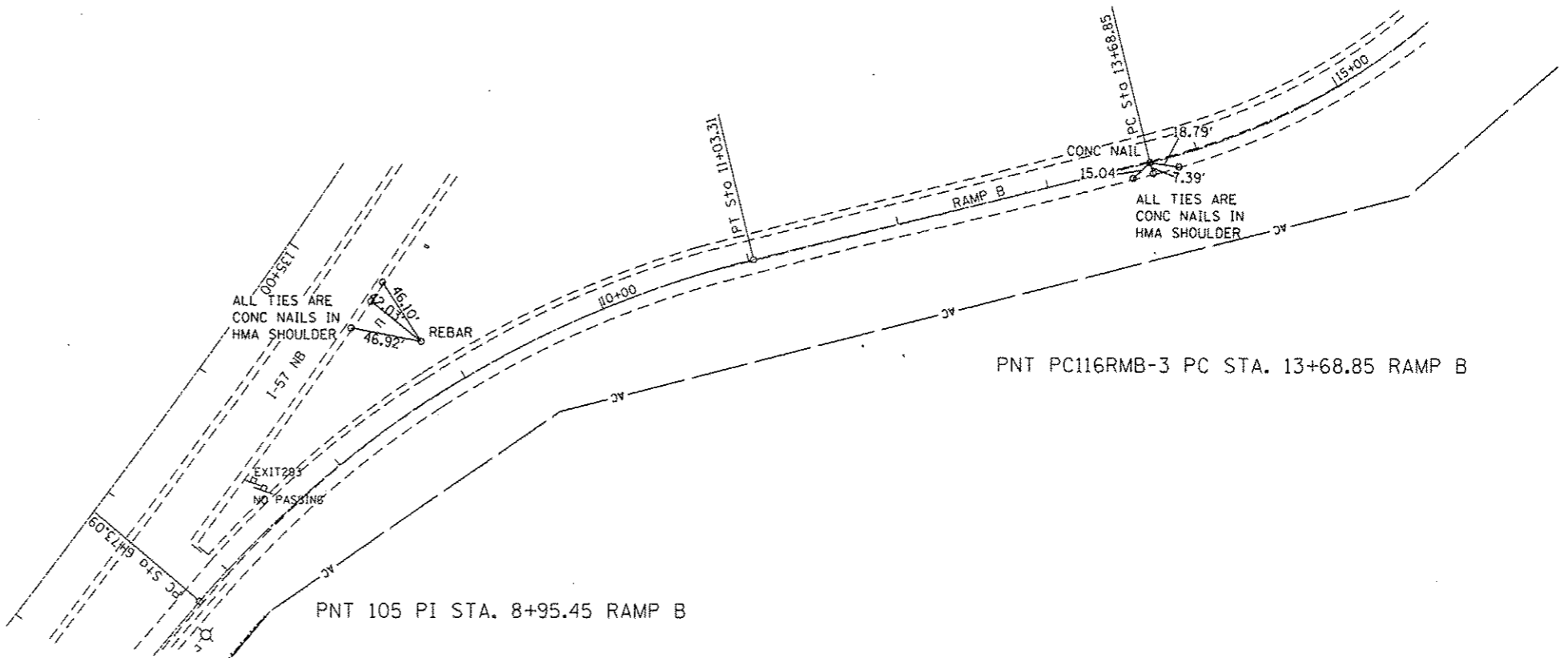
PNT 72 POT STA. 0+00.00 RAMP B



PNT 104 PI STA. 3+88.01 RAMP B



PNT 79 POT STA. 20+27.60 RAMP D



PNT 105 PI STA. 8+95.45 RAMP B

PNT PC116RMB-3 PC STA. 13+68.85 RAMP B

|  |                              |            |           |   |                                    |  |  |                    |            |          |              |           |
|--|------------------------------|------------|-----------|---|------------------------------------|--|--|--------------------|------------|----------|--------------|-----------|
| FILE NAME<br>c:\pwork\pvidot\dunobnd\d0315542\0366653-shl-alignment-ties.dgn | USER NAME = dunobnd          | DESIGNED - | REVISED - | <b>STATE OF ILLINOIS<br/>DEPARTMENT OF TRANSPORTATION</b> | <b>ALIGNMENT &amp; SURVEY TIES</b> |  |  | F.A.I. RTE.        | SECTION    | COUNTY   | TOTAL SHEETS | SHEET NO. |
|  | PLOT SCALE = 100.0000' / in. | CHECKED -  | REVISED - |   |                                    |  |  | 57                 | (38-3)RS-2 | IROQUOIS | 186          | 22        |
|  | PLOT DATE = 6/10/2014        | DATE -     | REVISED - |   |                                    |  |  | CONTRACT NO. 66C53 |            |          |              |           |

SCALE: SHEET NO. 6 OF 6 SHEETS STA. TO STA. ILLINOIS FED. AID PROJECT