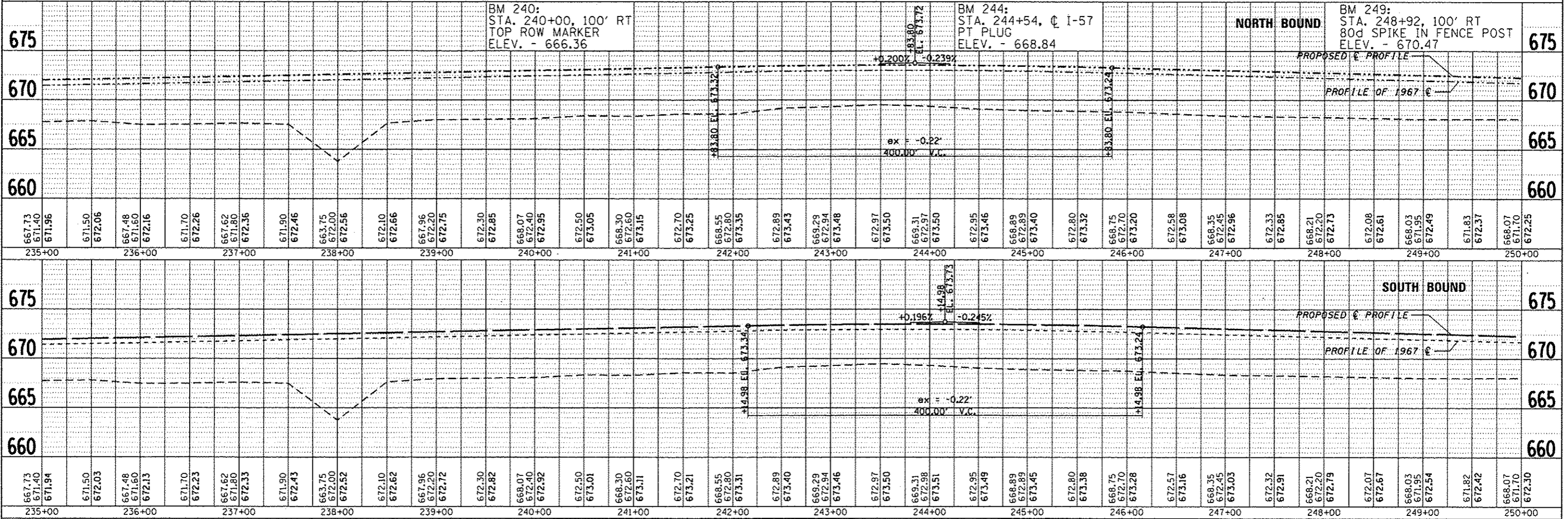
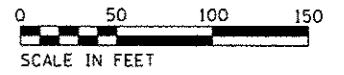
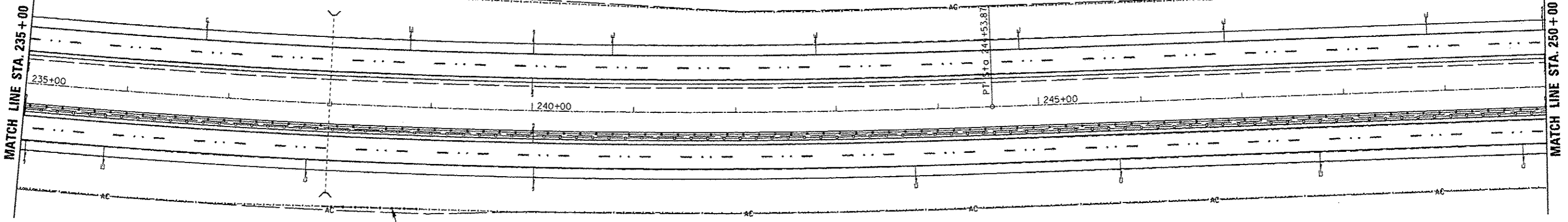




STA. 238+00
SB 36"X82" RCCP
W/ MEDIAN INLET
NO WORK

STA. 238+00
SB 36"X86" RCCP
NO WORK

FENCE REPAIR - 100 FT
STA. 237+95 TO STA. 238+95



BM 240:
STA. 240+00, 100' RT
TOP ROW MARKER
ELEV. - 666.36

BM 244:
STA. 244+54, C I-57
PT PLUG
ELEV. - 668.84

NORTH BOUND

BM 249:
STA. 248+92, 100' RT
80d SPIKE IN FENCE POST
ELEV. - 670.47

SOUTH BOUND

DATE	
BT	
REVISIONS	
NO.	
DATE	
BY	
DESCRIPTION	
DATE	
BY	
DESCRIPTION	

DATE	
BT	
REVISIONS	
NO.	
DATE	
BY	
DESCRIPTION	
DATE	
BY	
DESCRIPTION	

FILE NAME =	USER NAME = duncanbd	DESIGNED -	REVISED -	STATE OF ILLINOIS DEPARTMENT OF TRANSPORTATION	PLAN AND PROFILE			F.A.I. RTE.	SECTION	COUNTY	TOTAL SHEETS	SHEET NO.
at:\pwork\p10101\duncanbd\18315542\036603-plansheets.dgn		CHECKED -	REVISED -					57	(38-3RS-2)	ILLINOIS	186	33
PLOT SCALE = 100.0000' / in.		DRAWN -	REVISED -					CONTRACT NO. 66C53				
PLOT DATE = 6/10/2014		CHECKED -	REVISED -					FED. ROAD DIST. NO. ILLINOIS FED. AID PROJECT				
				SCALE: 1"=50'			SHEET NO. 11 OF 31 SHEETS		STA. 235+00 TO STA. 250+00			