

11-21-14 LETTING ITEM 059
INDEX OF SHEETS

- 1 COVER SHEET
- 2 GENERAL NOTES
- 3 SUMMARY OF QUANTITIES
- 4 - 6 BRIDGE SEALING SCHEDULE
- 7 - 8 LOCATION MAPS
- 9 SEALING DETAILS

STANDARDS

- 000001-06 STANDARD SYMBOLS, ABBREVIATIONS AND PATTERNS
- 701201-04 LANE CLOSURE, 2L, 2W, DAY ONLY, FOR SPEEDS ≥ 45 MPH
- 701400-07 APPROACH TO LANE CLOSURE, FREEWAY/EXPRESSWAY
- 701406-08 LANE CLOSURE, FREEWAY/EXPRESSWAY, DAY OPERATIONS ONLY
- 701411-08 LANE CLOSURE, MULTILANE, AT ENTRANCE OR EXIT RAMP FOR SPEEDS ≥ 45 MPH
- 701428 TRAFFIC CONTROL SETUP AND REMOVAL FREEWAY/EXPRESSWAY
- 701456-03 PARTIAL EXIT RAMP CLOSURE FREEWAY/EXPRESSWAY
- 701501-06 URBAN LANE CLOSURE, 2L, 2W, UNDIVIDED
- 701601-09 URBAN LANE CLOSURE, MULTILANE, 1W OR 2W WITH NONTRAVERSABLE MEDIAN
- 701901-03 TRAFFIC CONTROL DEVICES

MICROFILMED _____
 REEL NUMBER _____
 AWARDED _____
 RESIDENT ENGINEER _____
 AS BUILT CHANGES WERE MADE
 ON THE FOLLOWING SHEETS _____

J.U.L.I.E.
 JOINT UTILITY LOCATION INFORMATION FOR EXCAVATION
 1-800-892-0123
 OR 811

PROJECT ENGINEER: CRAIG REED 815-434-8420
UNIT CHIEF: BRAD DUNCAN 815-434-8562

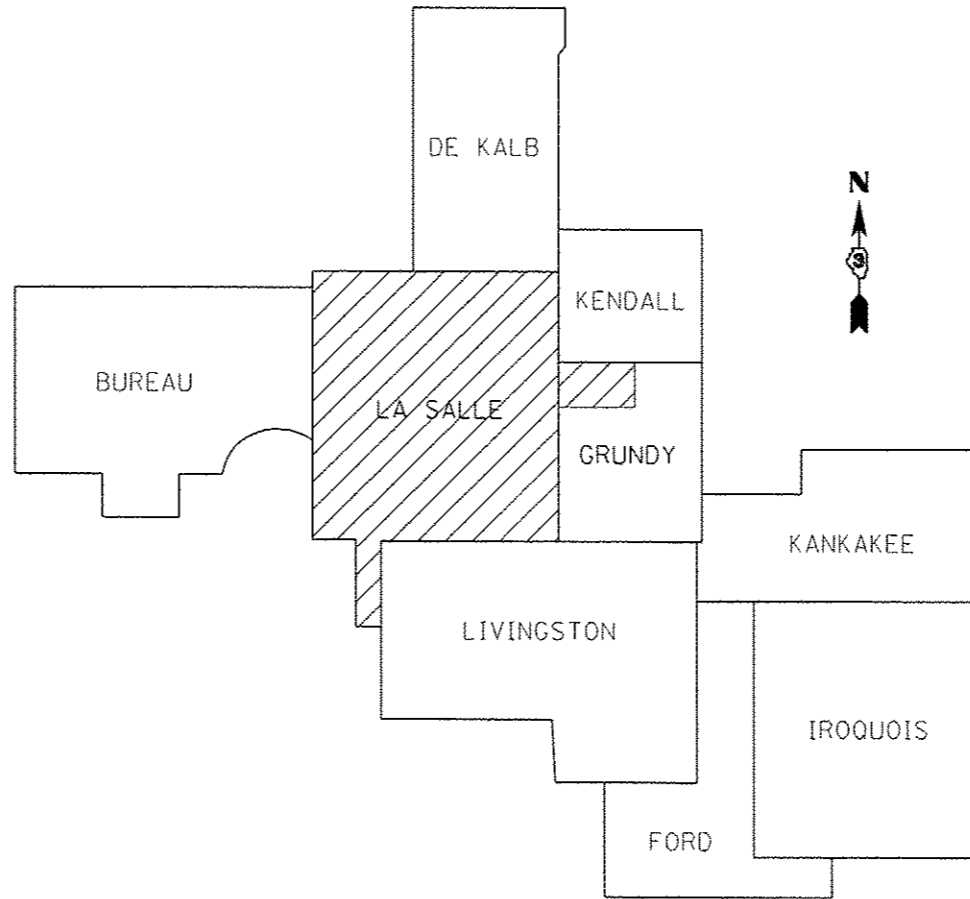
CONTRACT NO. 66E04

STATE OF ILLINOIS
DEPARTMENT OF TRANSPORTATION
DIVISION OF HIGHWAYS
PROPOSED
HIGHWAY PLANS

VARIOUS ROUTES
SECTION D3 BRIDGE DECK SEALING 2015

BRIDGE DECK SEALING
VARIOUS COUNTIES

C-93-135-14



| F.A. RTE. | SECTION | COUNTY | TOTAL SHEETS | SHEET NO. |
|-----------|---------|----------|--------------------|-----------|
| VARIOUS | * | VARIOUS | 9 | 1 |
| | | ILLINOIS | CONTRACT NO. 66E04 | |

* D3 BRIDGE DECK SEALING 2015

D-93-085-14



STATE OF ILLINOIS
 DEPARTMENT OF TRANSPORTATION
 DIVISION OF HIGHWAYS

SUBMITTED August 15 20 14
Paul Coete D.B.
 DEPUTY DIRECTOR OF HIGHWAYS, REGION ENGINEER

Oct 17 20 14
John D. Baranzoni PE, EIT
 ENGINEER OF DESIGN AND ENVIRONMENT

Oct 17 20 14
Omer Osman PE, EIT
 DIRECTOR OF HIGHWAYS, CHIEF ENGINEER

PRINTED BY THE AUTHORITY
OF THE STATE OF ILLINOIS

10/28/14

| CODE NO. | ITEM | UNIT | TOTAL QUANTITY | CONSTR. CODE |
|----------|---|--------|----------------|--------------|
| | | | | 100% STATE |
| | | | | BRIDGE 0014 |
| 67100100 | MOBILIZATION | L SUM | 1 | 1 |
| 70100420 | TRAFFIC CONTROL AND PROTECTION, STANDARD 701411 | EACH | 3 | 3 |
| 70100450 | TRAFFIC CONTROL AND PROTECTION, STANDARD 701201 | L SUM | 1 | 1 |
| 70100700 | TRAFFIC CONTROL AND PROTECTION, STANDARD 701406 | L SUM | 1 | 1 |
| 70100825 | TRAFFIC CONTROL AND PROTECTION, STANDARD 701456 | L SUM | 1 | 1 |
| 70102620 | TRAFFIC CONTROL AND PROTECTION, STANDARD 701501 | L SUM | 1 | 1 |
| 70102630 | TRAFFIC CONTROL AND PROTECTION, STANDARD 701601 | L SUM | 1 | 1 |
| X5870015 | BRIDGE DECK CONCRETE SEALER | SQ FT | 1155140 | 1155140 |
| X7010410 | SPEED DISPLAY TRAILER | CAL MO | 2 | 2 |

9

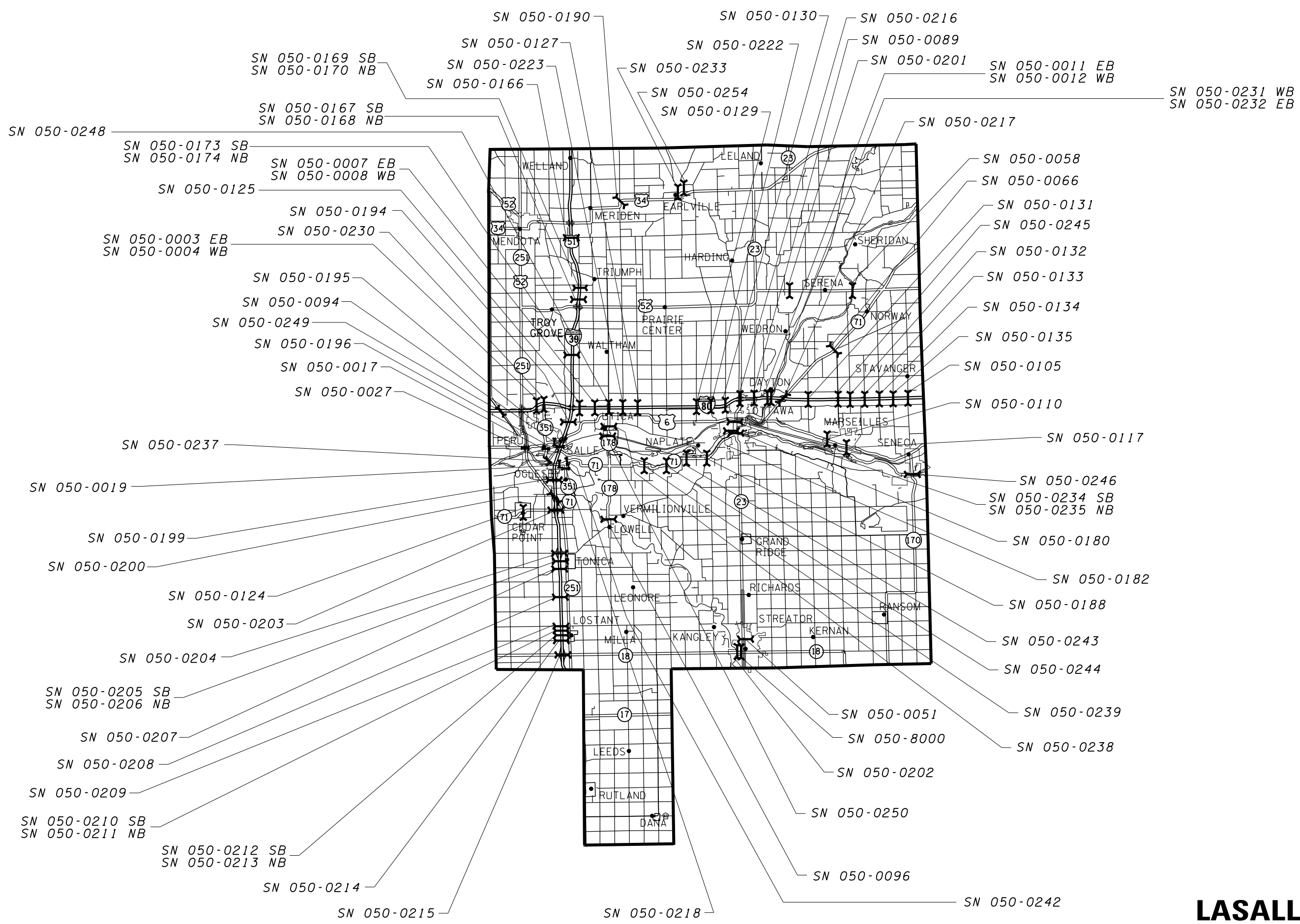
| | | | | | | | | | | | | | |
|--|-------------------------|-----------------------|------------------------|---|---|-------------------------|------|---------|--------------|---------|--------|-----------------|--------------|
| FILE NAME : c:\pwwork\pwwork\duccenbd\0396221\0396221-000.dgn | USER NAME : duccenbd | DESIGNED - DRAWN - | REVISED - REVISED - | STATE OF ILLINOIS DEPARTMENT OF TRANSPORTATION | SUMMARY OF QUANTITIES | | | | F.A. RTE. | SECTION | COUNTY | TOTAL SHEETS | SHEET NO. |
| PLOT SCALE : 100.0000 / 1 in. | CHECKED - | REVISED - | REVISED - | | SCALE: | SHEET NO. 1 OF 1 SHEETS | STA. | TO STA. | VAR | VARIOUS | 9 | 3 | |
| PLOT DATE : 8/14/2014 | DATE - | REVISED - | REVISED - | | *03 BRIDGE DECK SEALING 2015 CONTRACT NO. 66E04 | | | | | | | | |
| ILLINOIS FED. AID PROJECT | | | | | | | | | | | | | |

CONCRETE SEALER

| STRUCTURE NUMBER | FACILITY CARRIED | APPROXIMATE LOCATION | FEATURE CROSSED | DECK WIDTH | PARAPET SURFACE | MEDIAN SURFACE | DECK LENGTH | SEAL AREA | TRAFFIC CONTROL AND PROTECTION STANDARD |
|---------------------------|----------------------|-------------------------|----------------------|------------|-----------------|----------------|-------------|-----------|---|
| | | | | FEET | FEET | FEET | FEET | SQ FT | |
| LASALLE COUNTY INTERSTATE | | | | | | | | | |
| 050-0134 | TWP RD TR 448 | 3 MI E MARSEILLES RD | FAI 80 | 24 | 1.7 | | 199 | 5,114 | 701201 |
| 050-0135 | TWP RD TR 456 | 3.9 MI E MARSEIL. RD | FAI 80 | 24 | 1.7 | | 202 | 5,191 | 701201 |
| 050-0166 | TR 105 | 1 MI S OF US 34 | I-39/US 51 | 26.5 | 1.6 | | 257 | 7,222 | 701201 |
| 050-0180 | ILL 71 AND ILL 23 | 1 MILE SOUTH US 6 | IL RIVER & ACC RD | 57 | 7 | | 1317 | 84,288 | 701601 |
| 050-0182 | ILL 23SBL LASALLE ST | DOWN TOWN OTTAWA | PARKING LOT ENTRANCE | 30.8 | 7 | | 86.5 | 3,270 | 701601 |
| 050-0188 | ILL 71 | 7.38 MI E OF ILL 178 | COVEL CR | 32 | 7 | | 192 | 7,488 | 701201 |
| 050-0190 | US 34 FAP 587 | 8.71 MI E OF ILL 251 | SUTPHENS RUN | 36 | 7 | | 119 | 5,117 | 701201 |
| 050-0194 | FAU 6124/N.29TH RD | 0.25 MI E.OF FAS 260 | I-39/US 51 | 28 | 7 | | 296 | 10,360 | 701201 |
| 050-0195 | US 6 FAP 623 | 2.74 MI E OF ILL 351 | I-39/US 51 | 66 | 7 | | 407 | 29,711 | 701201 |
| 050-0199 | FAU 6093 WALNUT ST | .78MI. W. OF ILL 351 | I-39/US 51 | 57 | 7 | 6 | 237 | 16,590 | 701501 |
| 050-0200 | IL 251/FAP 46 | .5 MI. N. ILL 71 | I-39/US 51 | 49 | 7 | 18 | 411 | 30,414 | 701201 |
| 050-0201 | US 52 FAP 607 | 2.12 MI E OF ILL 23 | INDIAN CREEK | 32 | 7 | | 398 | 15,522 | 701201 |
| 050-0202 | ILL 18 WB | 0.10 MI W OF ILL 23 | VERMILION RIVER | 30 | 7 | | 400 | 14,800 | 701601 |
| 050-0203 | ILL 71 FAP 619 | 0.46 MI W OF IL 251 | I-39/US 51 | 61 | 7 | 6 | 242.5 | 17,945 | 701201 |
| 050-0204 | CH 54 | 0.54 W OF IL 251 | I-39/US 51 | 57 | 7 | 6 | 228 | 15,960 | 701201 |
| 050-0207 | TR 483 | 6.13 MI N OF IL 18 | I-39/US 51 | 28 | 7 | | 257 | 8,995 | 701201 |
| 050-0208 | FAS 254 CH 5 | 4.0 MI N OF IL 18 | I-39/US 51 | 34 | 7 | | 228.5 | 9,369 | 701201 |
| 050-0209 | TR 513 | 2.0 MI N OF IL 18 | I-39/US 51 | 28 | 7 | | 229 | 8,015 | 701201 |
| 050-0214 | TR 525 | 1.0 MI N OF IL 18 | I-39/US 51 | 28 | 7 | | 228.5 | 7,998 | 701201 |
| 050-0215 | ILL 18 FAP 653 | 0.48 MI W OF IL 251 | I-39/US 51 | 61 | 7 | 6 | 229.5 | 16,983 | 701201 |
| 050-0216 | IL 23/FAP 68 | ILL 23 AT OTTAWA | I 80 | 65 | 7 | 6 | 203.3 | 15,857 | 701601 |
| 050-0217 | IL 71 FAP 311 | JUNCTION IL 71 | I-80 | 49 | 7 | 18 | 236.2 | 17,479 | 701201 |
| 050-0218 | ILL 351 FAP 619 | 2.55 MI S OF US 6 | LONE STAR CEMENT RR | 30 | 4.35 | | 145 | 4,981 | 701201 |
| 050-0222 | FAS 1267/TERRA COTTA | 7.0 M E OF IL 178 | I 80 | 27.5 | 7 | | 232.7 | 8,028 | 701201 |
| 050-0223 | TR 156 (LONE TREE RD | 1 MI E OF IL 178 | I 80 | 27.5 | 7 | | 232.7 | 8,028 | 701201 |
| 050-0230 | ILL 351 ST. VINCENT | 1.6 MI E JC ILL 251 | FAI 80 | 49 | 7.4 | 4.5 | 245.5 | 14,951 | 701456 NB & SB |
| 050-0233 | OLD US 34 SBI 18 | IN EARLVILLE | INDIAN CREEK | 30 | 7 | | 96.6 | 3,574 | 701201 |
| 050-0234 | ILL 23/IL 71 FAP 68 | LASALLE ST IN OTTAWA | ILL MICH CANAL | 49.3 | 1.5 | | 21.7 | 1,102 | 701601 |
| 050-0235 | ILL 23 & 71 | COLUMBUS ST OTTAWA | ILL MICH CANAL | 43.3 | 1.5 | | 21.7 | 972 | 701601 |
| 050-0237 | ILL 351/FAP619 | 1.0 MI. S OF US 6 | IL RIVER | 39.1 | 7 | | 1774.9 | 81,823 | 701201 |
| 050-0238 | IL 178 FAS 1279 | 0.92 MI S OF US 6 | CLARK RUN | 36 | 1.2 | | 34.5 | 1,283 | 701201 |
| 050-0239 | IL 71 FAP 627 | 3.18 MI. E OF IL 178 | CREEK@HENNEPIN CANYN | 36 | 7 | | 73.1 | 3,143 | 701201 |
| 050-0240 | IL 23/US 52 | 0.25 MI E OF HARDING RD | CROOKED LEG CREEK | 36 | 7 | | 114 | 4,902 | 701201 |
| 050-0242 | IL 71 | 3.2 MI W OF IL 178 | VERMILION RIVER | 32 | 7 | | 355 | 13,845 | 701201 |
| 050-0243 | IL 71 | 5.90 MI E OF IL 178 | INTERMIT STREAM | 32 | 7 | | 82.9 | 3,233 | 701201 |
| 050-0244 | IL 71/FAP 627 | 4.3 MI E OF IL 178 | SALT WELLS CR | 33 | 7 | | 80 | 3,200 | 701201 |
| 050-0245 | MARSEILLES RD/FAS268 | 3.8 MI E OF IL 71 | I-80 | 56 | 7 | | 192.5 | 12,128 | 701201 |
| 050-0246 | IL 170 | S OF US RTE 6 | ILLINOIS RIVER | 30 TO 42 | 7 | | 1703.58 | 67,178 | 701201 |
| 050-0248 | IL 178/CH 43 | 6.2 MI E OF IL 251 | I-80 | 57 | 7 | 5.6 | 193 | 13,433 | 701201 |
| 050-0249 | PLANK ROAD | 1.4 MI W OF IL 251 | I-80 | 62 | 7 | | 226.9 | 15,656 | 701201 |
| 050-0250 | IL 178 | 0.01 MI S OF CHURCH ST | I & M CANAL | 30 | 1.5 | | 45 | 1,418 | 701201 |
| 050-0254 | WATER ST/N 4550TH RD | 0.44 MI N OF US 34 | INDIAN CREEK | 20.8 | 1.5 | | 63.2 | 1,409 | 701201 |
| 050-8000 | EBL OF ILL 18 | 2 BLKS. W OF ILL 23 | VERMILION RIVER | 29.3 | 4.25 | | 237 | 7,951 | 701601 |
| LASALLE COUNTY SUB-TOTAL | | | | | | | | 946,931 | |

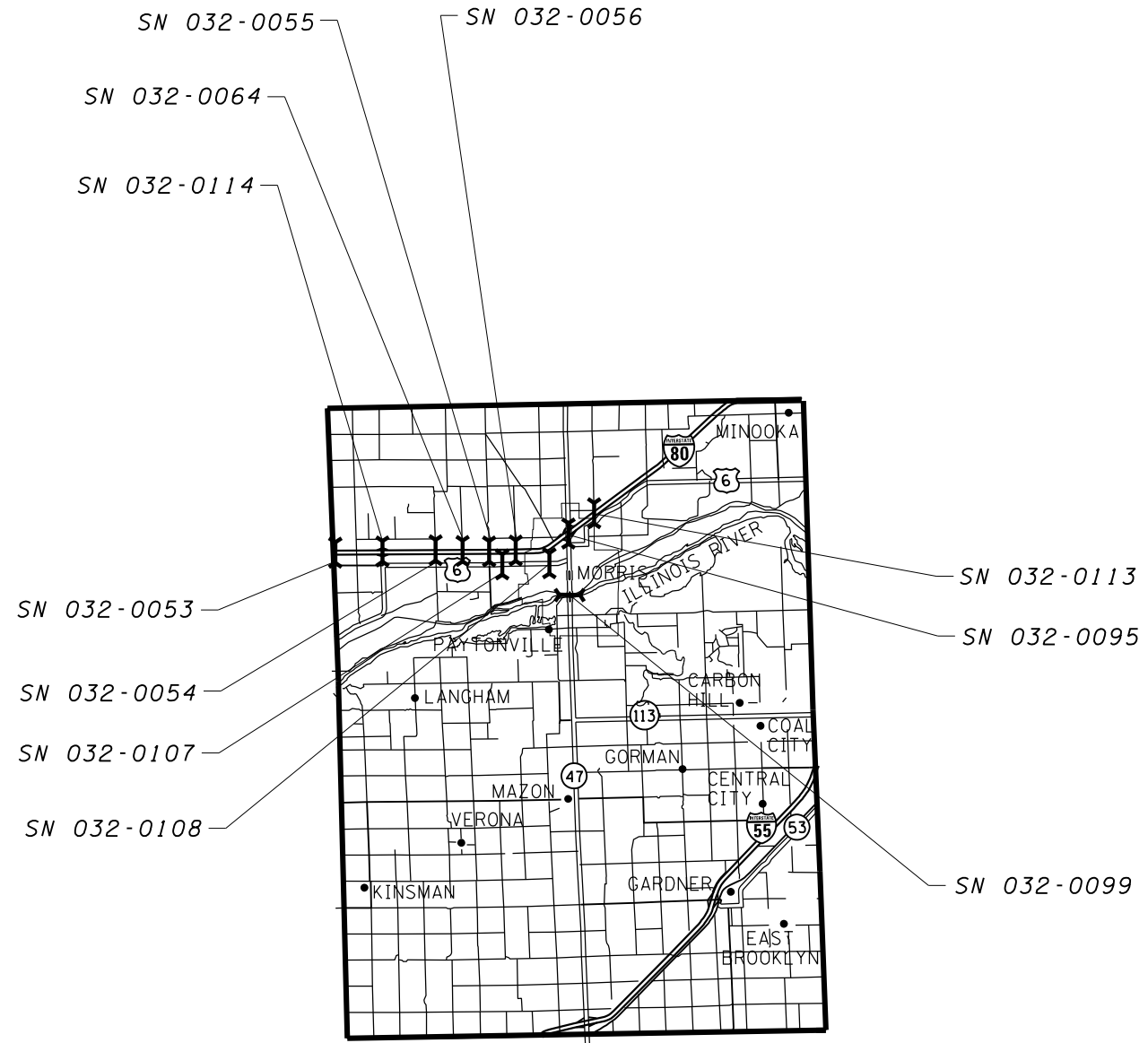
CONCRETE SEALER

| STRUCTURE NUMBER | FACILITY CARRIED | APPROXIMATE LOCATION | FEATURE CROSSED | DECK WIDTH | PARAPET SURFACE | MEDIAN SURFACE | DECK LENGTH | SEAL AREA | TRAFFIC CONTROL AND PROTECTION STANDARD |
|------------------------------|------------------------|----------------------|----------------------|------------|-----------------|-----------------|-------------|------------------|---|
| | | | | FEET | FEET | FEET | FEET | SQ FT | |
| GRUNDY COUNTY NON-INTERSTATE | | | | | | | | | |
| 032-0053 | COUNTY LINE RD TR 4 | 9.12 MI W ILL 47 | FAI 80 | 24 | 1.7 | | 201.3 | 5,173 | 701201 |
| 032-0054 | NETTLE SCHOOL RD TR 70 | 5.20 MI W ILL 47 | FAI 80 | 24 | 1.7 | | 190 | 4,883 | 701201 |
| 032-0055 | SARATOGA RD TR 86 | 3.19 MI W OF ILL 47 | FAI 80 | 24 | 1.7 | | 190 | 4,883 | 701201 |
| 032-0056 | ASHTON RD FAU 5975 | 2.21 MI W ILL 47 | FAI 80 | 24 | 1.7 | | 190 | 4,883 | 701501 |
| 032-0064 | PIONEER RD TR 78 | 4.20 MI W OF ILL 47 | FAI 80 | 24 | 1.7 | | 190 | 4,883 | 701201 |
| 032-0095 | ILL 47 | INTER I80 & ILL47 | I 80 | 84 | 4.3 | 1+(3.5 to 15.5) | 254 | 22,682 | 701601 |
| 032-0099 | IL 47 FAP 326 | APPR.1.23MI S /US 6 | IL RIV.& I & M CANAL | 60.7 | 7 | 5 | 1730 | 118,851 | 701601 |
| 032-0107 | US 6 FAU 5952 | 2.49 MI W OF IL 47 | NETTLE CREEK | 74 | 7 | | 147.4 | 11,939 | 701201 |
| 032-0108 | US 6 | WEST OF IL 47 | E FORK NETTLE CREEK | 67 | 1.5 | | 88.5 | 6,062 | 701501 |
| 032-0113 | ASHLEY RD/FAU 5974 | 1.24 MI E OF IL 47 | I-80 | 32 | 7 | | 251 | 9,789 | 701201 |
| 032-0114 | FAP 623 (AT OR 623) | SENECA JUNCTION | I-80 EB & WB | 62 | 7 | | 205.5 | 14,180 | 701201 |
| GRUNDY COUNTY SUB-TOTAL | | | | | | | | 208,209 | |
| TOTAL | | | | | | | | 1,155,140 | |



LASALLE COUNTY

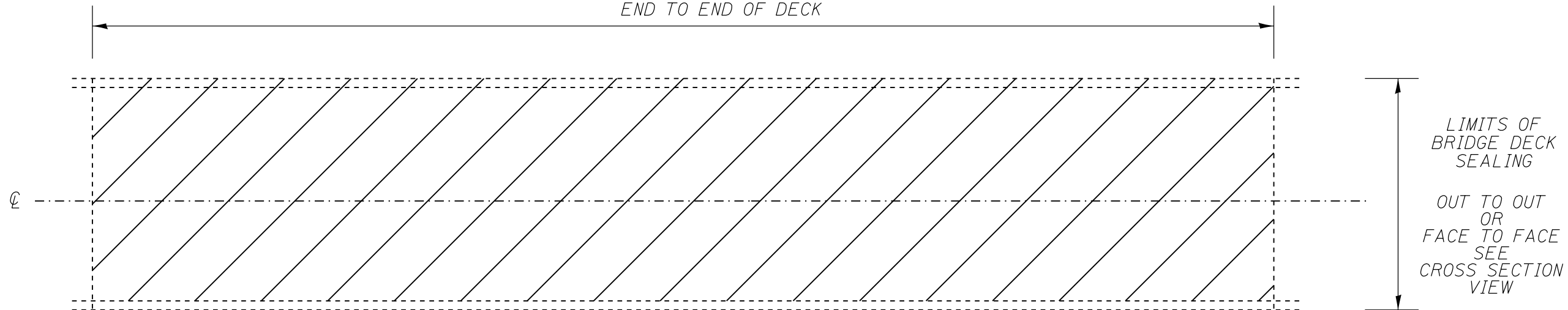
| | | | | | | | | | | | | | | |
|--|------------------------------|------------|-----------|---|--|-----------|-----------|-----------|---------|------------------------------|--------------|-----------|--------------------|---|
| FILE NAME = c:\pwwork\pwwork\duncanbd\0396221\036E04-sht-plan.dgn | USER NAME = duncanbd | DESIGNED - | REVISED - | STATE OF ILLINOIS DEPARTMENT OF TRANSPORTATION | LASALLE COUNTY LOCATION MAP | | | F.A. RTE. | SECTION | COUNTY | TOTAL SHEETS | SHEET NO. | | |
| | PLOT SCALE = 100.0000' / in. | DRAWN - | REVISED - | | SCALE: NONE | SHEET NO. | OF SHEETS | STA. | TO STA. | VAR | * | VARIOUS | 9 | 7 |
| | PLOT DATE = 8/14/2014 | CHECKED - | REVISED - | | | | | | | *D3 BRIDGE DECK SEALING 2015 | | | CONTRACT NO. 66E04 | |
| | | DATE - | REVISED - | | | | | | | ILLINOIS FED. AID PROJECT | | | | |



GRUNDY COUNTY

| | | | | | | | | | | | | |
|--|----------------------|------------|------------------------------|---|---------------------------------------|-----------|---------------------------|-----------|---------|--------|--------------|-----------|
| FILE NAME = | USER NAME = duncanbd | DESIGNED - | REVISED - | STATE OF ILLINOIS DEPARTMENT OF TRANSPORTATION | GRUNDY COUNTY LOCATION MAP | | | F.A. RTE. | SECTION | COUNTY | TOTAL SHEETS | SHEET NO. |
| c:\pwwork\pwwork\duncanbd\0396221\0366E04-sht-plan.dgn | DRAWN - | REVISED - | VAR | | | | | * | VARIOUS | 9 | 8 | |
| PLOT SCALE = 100.0000' / in. | CHECKED - | REVISED - | *D3 BRIDGE DECK SEALING 2015 | | CONTRACT NO. 66E04 | | ILLINOIS FED. AID PROJECT | | | | | |
| PLOT DATE = 8/14/2014 | DATE - | REVISED - | SCALE: NONE | | SHEET NO. | OF SHEETS | STA. | TO STA. | | | | |

LIMITS OF BRIDGE DECK SEALING
END TO END OF DECK

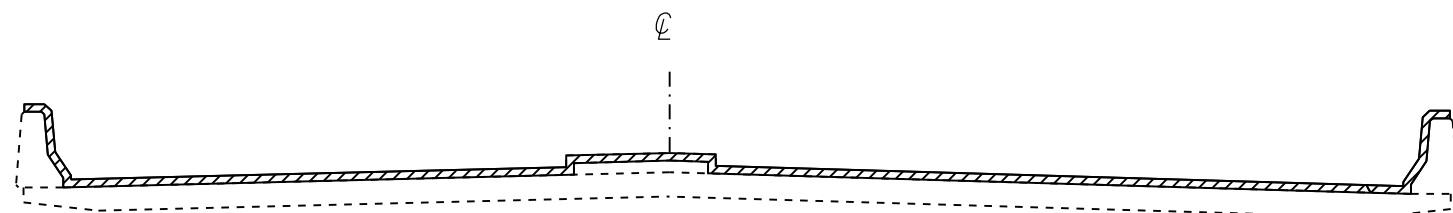


PLAN VIEW

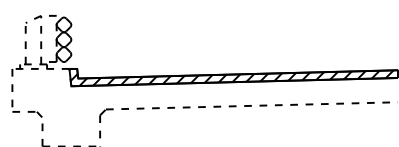
NOTE: BRIDGE APPROACH PAVEMENT SHALL NOT BE SEALED.

EXISTING PAVEMENT MARKINGS SHALL BE TEMPORARILY COVERED PRIOR TO APPLICATION OF THE DECK SURFACE TREATMENT, TO PREVENT THE MATERIAL FROM BEING APPLIED TO THE MARKINGS AND TO PROTECT THE REFLECTIVE PROPERTIES OF THE MARKINGS. THE TEMPORARY COVERING MATERIAL USED SHALL BE SUCH THAT IT WILL NOT AFFECT THE MARKING'S REFLECTIVITY WHEN REMOVED AFTER APPLICATION OF THE DECK SURFACE TREATMENT AND PRIOR TO OPENING TO TRAFFIC. COST INCLUDED WITH CONCRETE SEALER.

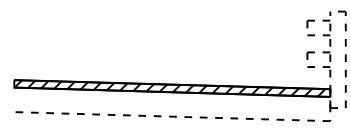
EXISTING EXPANSION JOINTS SHALL BE TEMPORARILY COVERED, PRIOR TO APPLICATION OF THE DECK SURFACE TREATMENT, TO PREVENT THE MATERIAL FROM BEING APPLIED TO THE JOINTS. THE TEMPORARY COVERING SHALL BE REMOVED AFTER THE APPLICATION OF THE DECK SURFACE TREATMENT AND PRIOR TO OPENING TO TRAFFIC. COST IS INCLUDED WITH CONCRETE SEALER.



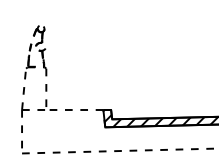
SECTION WITH
PARAPET AND MEDIAN



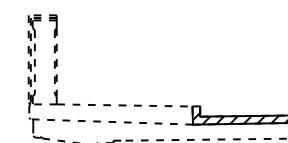
SECTION WITH CURB AND
TUBULAR THRIE BEAM RETROFIT RAIL



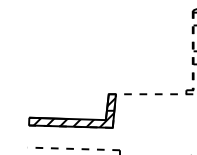
SECTION WITH
BRIDGE RAIL



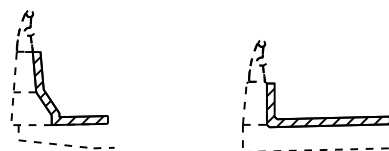
CONCRETE AND
ALUMINUM RAILING



CONCRETE
BRIDGE RAILING



BRIDGE RAIL



SECTION WITH CONCRETE
AND ALUMINUM RAILING

VARIOUS SECTIONS WITH SIDEWALK AND/OR CONCRETE CURB

 AREA TO BE SEALED

NOT TO SCALE

| | | | |
|--|----------------------|------------|-----------|
| FILE NAME = | USER NAME = duncanbd | DESIGNED - | REVISED - |
| et:\pwork\pwork\dot\duncanbd\0396221\0366E04-sht-details.dgn | | DRAWN - | REVISED - |
| | | CHECKED - | REVISED - |
| | | DATE - | REVISED - |
| | | | |

STATE OF ILLINOIS
DEPARTMENT OF TRANSPORTATION

SEALING DETAILS

SCALE: SHEET NO. OF SHEETS STA. TO STA.

| | | | | |
|------------------------------|---------|---------|--------------------|-----------|
| F.A. RTE. | SECTION | COUNTY | TOTAL SHEETS | SHEET NO. |
| VAR | | VARIOUS | 9 | 9 |
| *D3 BRIDGE DECK SEALING 2015 | | | CONTRACT NO. 66E04 | |
| ILLINOIS FED. AID PROJECT | | | | |