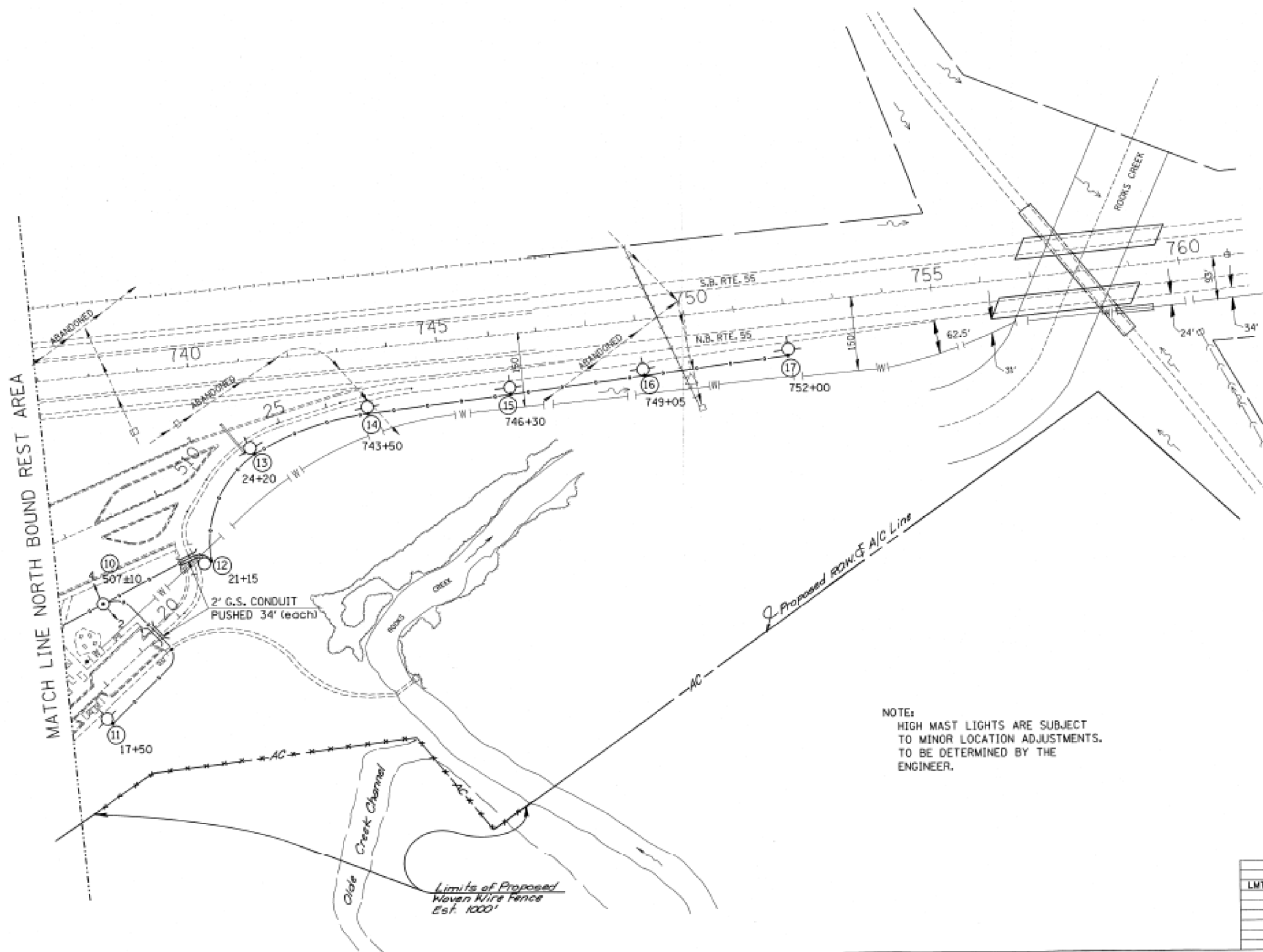
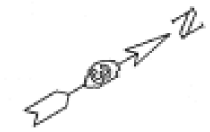


FOR INFORMATION ONLY

TAL. NO.	SECTION	COUNTY	TOTAL SHEETS	SHEET NO.
55	*	LIVINGSTON	22	5
STA.	TO STA.			
REL. ROAD DISTANCE	ILLINOIS	MILE MARK		
* 53-6 & 53-5 RA-L				



LEGEND

- LIGHT POLE
- LIGHT TOWER
- BURIED CABLE
- PUSHED CONDUIT
- CANTILEVER SIGN STRUCTURE
- EXIST. FIELD TILE

NOTE:
HIGH MAST LIGHTS ARE SUBJECT TO MINOR LOCATION ADJUSTMENTS. TO BE DETERMINED BY THE ENGINEER.



ILLINOIS DEPARTMENT OF TRANSPORTATION
DRAWN BY C.A.D.O.

NORTH BOUND REST AREA LIGHTING LOCATIONS

DATE 12-30-88

DRAWN BY L.M.T.
CHECKED BY

REVISIONS	
NAME	DATE
LMT	1-3-89

9-JAN-89 11:47:48
2F26212.002D301883A.DGN

FILE NAME =	USER NAME = Schwankerg	DESIGNED -	REVISED -
c:\pwork\pwork\schwankerg\d0410675\066E29-shd-details.dgn		DRAWN -	REVISED -
\$MODELNAME\$	PLOT SCALE = 1:16,600 1" = 166'	CHECKED -	REVISED -
	PLOT DATE = 8/22/2014	DATE -	REVISED -

**STATE OF ILLINOIS
DEPARTMENT OF TRANSPORTATION**

**LIMESTONE
NORTHBOUND REST AREA**

SCALE: SHEET OF SHEETS STA. TO STA.

F.A.I. RTE.	SECTION	COUNTY	TOTAL SHEETS	SHEET NO.
80&55	*	GRUNDY/LIV.	20	18
CONTRACT NO. 66E29			ILLINOIS FED. AID PROJECT	

*2015-1 TREE REMOVAL FOR EAB CONTROL