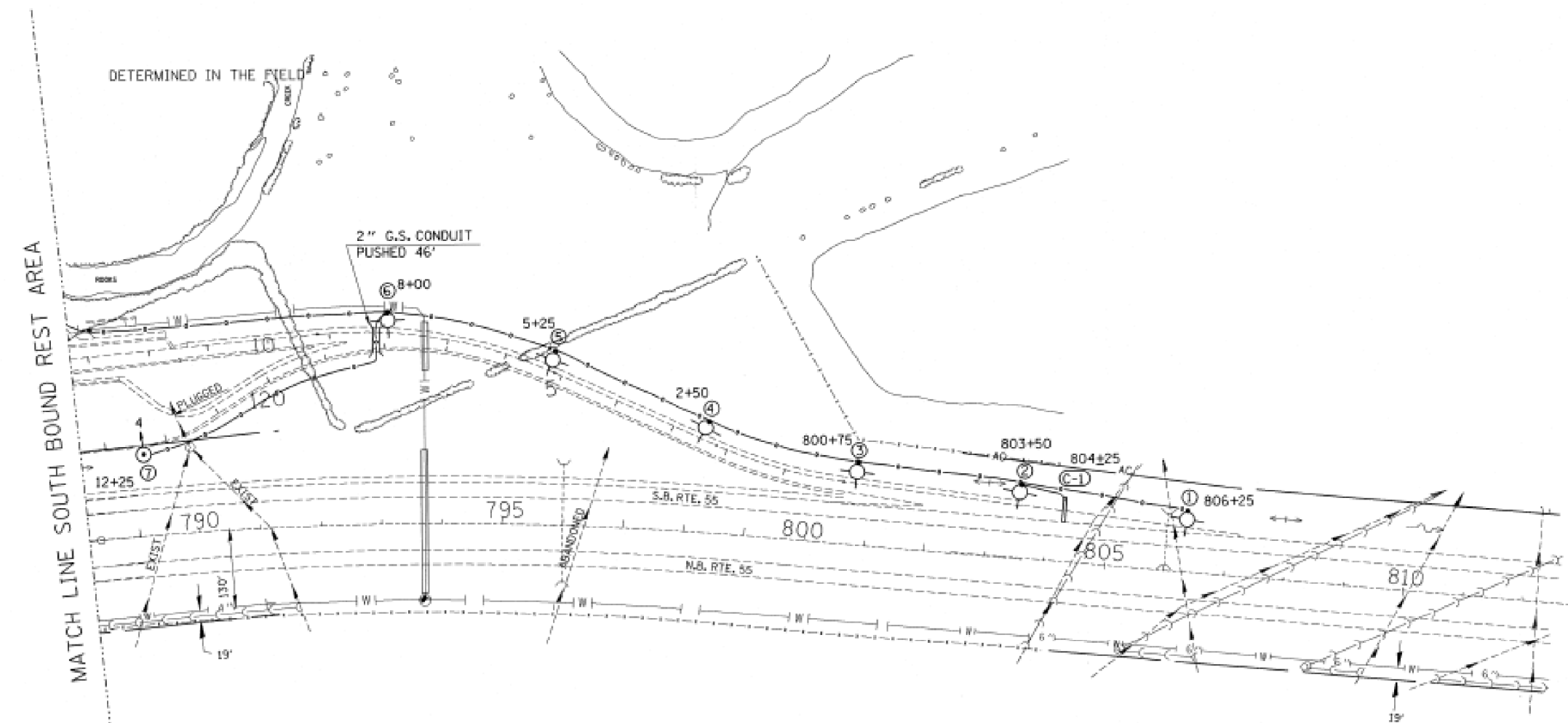
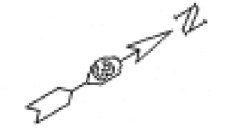


FOR INFORMATION ONLY

FILE NO.	SECTION	COUNTY	TRAIL MILE	SHEET NO.
55	*	LIVINGSTON	22	7
STA.		TO STA.		
PRELIM. DIST. NO.		NUMBER	FILE NO. PROJECT	
* 53-6 & 53-5 RA-L				



LEGEND

	LIGHT POLE
	LIGHT TOWER
	BURIED CABLE
	PUSHED CONDUIT
	CANTILEVER SIGN STRUCTURE
	EXIST. FIELD TILE

NOTE:
HIGH MAST LIGHTS ARE SUBJECT TO MINOR LOCATION ADJUSTMENTS. TO BE DETERMINED BY THE ENGINEER.

REVISIONS	
NAME	DATE
L.M.T.	1-3-89

ILLINOIS DEPARTMENT OF TRANSPORTATION
DRAWN BY C.A.S.O.
SOUTH BOUND REST AREA LIGHTING LOCATIONS
DRAWN BY L.M.T.
CHECKED BY _____
DATE 12-30-88

FILE NAME =	USER NAME = Schwankerg	DESIGNED -	REVISED -
c:\pwork\pwork\schwankerg\d0410675\066E29-shr-details.dgn		DRAWN -	REVISED -
\$MODELNAME\$	PLOT SCALE = 1:16,6000' / 1" =	CHECKED -	REVISED -
	PLOT DATE = 8/22/2014	DATE -	REVISED -

**STATE OF ILLINOIS
DEPARTMENT OF TRANSPORTATION**

LIMESTONE SOUTHBOUND REST AREA			
SCALE:	SHEET	OF SHEETS	STA. TO STA.

F.A.I. RTE.	SECTION	COUNTY	TOTAL SHEETS	SHEET NO.
80&55	*	GRUNDY/LIV.	20	20
CONTRACT NO. 66E29				
ILLINOIS FED. AID PROJECT				

*2015-1 TREE REMOVAL FOR EAB CONTROL