

STATE OF ILLINOIS  
 DEPARTMENT OF TRANSPORTATION  
 DIVISION OF HIGHWAYS  
**PROPOSED  
 HIGHWAY PLANS**

F.A.I. RTE.	SECTION	COUNTY	TOTAL SHEETS	SHEET NO.
80/55	*	GRUNDY/LIV.	20	1
		ILLINOIS	CONTRACT NO. 66E29	

\*2015-1 TREE REMOVAL FOR EAB CONTROL

INDEX OF SHEETS

1	COVER SHEET
2	GENERAL NOTES AND SUMMARY OF QUANTITIES
3-4	SCHEDULES
5-8	PLAN SHEETS
9-20	EXISTING REST AREA PLANS (FOR INFO. ONLY)

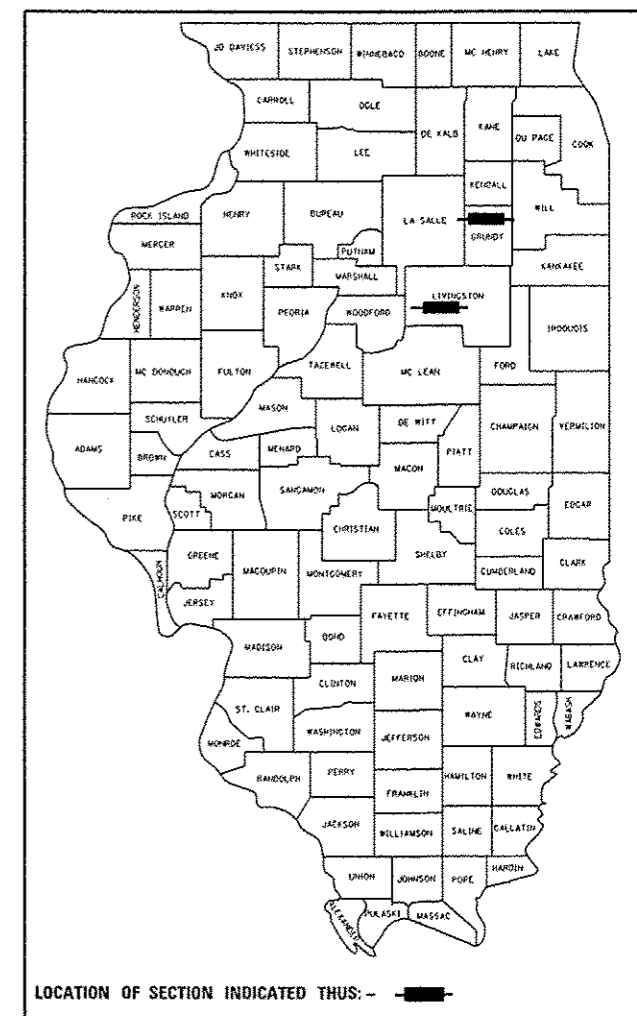
LIST OF ILLINOIS DOT HIGHWAY STANDARDS

000001-06	STANDARD SYMBOLS, ABBREVIATIONS AND PATTERNS
001006	DECIMAL OF AN INCH AND OF A FOOT
701456-03	PARTIAL EXIT RAMP CLOSURE FREEWAY/EXPRESSWAY
701801-05	SIDEWALK, CORNER OR CROSSWALK CLOSURE
701901-03	TRAFFIC CONTROL DEVICES

**FAI 80 (I-80) & FAI 55 (I-55)**  
**SECTION: 2015-1 TREE REM**  
*FOR EAB CONTROL*

**TYPE OF REMOVAL – TREE REMOVAL**  
**GRUNDY & LIVINGSTON COUNTIES**

C-93-010-15



**FUNCTIONAL CLASSIFICATION:**  
**INTERSTATE**

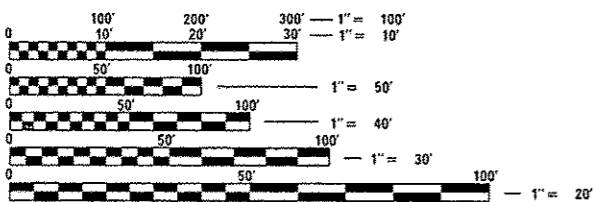
2013 I-80 ADT=35,500 SU=10.8% MU=28.7%  
 2013 I-55 ADT=20,300 SU=14.5% MU=24.1%

STATE OF ILLINOIS  
 DEPARTMENT OF TRANSPORTATION  
 DIVISION OF HIGHWAYS

SUBMITTED *August 25 20 14*  
*Paul Coete P.E.*  
 DEPUTY DIRECTOR OF HIGHWAYS, REGION ENGINEER

*Oct 17 20 14*  
*John D. Baranzelli P.E.*  
 acting ENGINEER OF DESIGN AND ENVIRONMENT

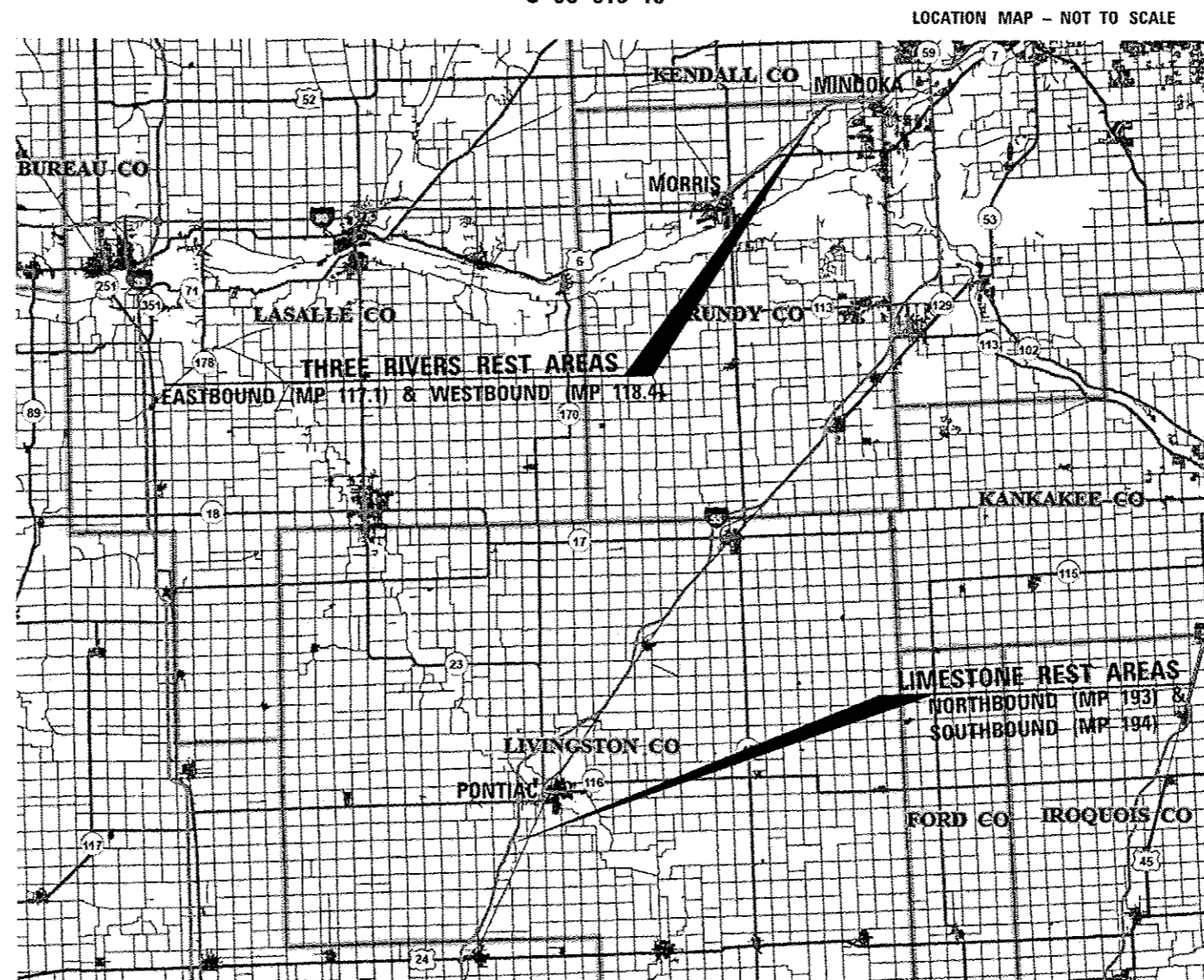
*Oct 17 20 14*  
*Omer Osman P.E.*  
 DIRECTOR OF HIGHWAYS, CHIEF ENGINEER



FULL SIZE PLANS HAVE BEEN PREPARED USING STANDARD ENGINEERING SCALES. REDUCED SIZED PLANS WILL NOT CONFORM TO STANDARD SCALES. IN MAKING MEASUREMENTS ON REDUCED PLANS, THE ABOVE SCALES MAY BE USED.

J.U.L.I.E.  
 JOINT UTILITY LOCATION INFORMATION FOR EXCAVATION  
 1-800-892-0123  
 OR 811

DISTRICT 3 (815) 434-6131  
 PROJECT ENGINEER: JOE KANNEL, P.E.  
 UNIT CHIEF: DUANE LUKKARI, P.E.  
 TOWNSHIPS: AUX SABLE & EPPARDS POINT  
 CONTRACT NO. 66E29



**GENERAL NOTES**

FOR STABILIZATION, ALL TYPE III BARRICADES WILL REQUIRE A MINIMUM OF FOUR SAND BAGS PER BARRICADE.

SEEDING WILL NOT BE PERMITTED AT ANY TIME WHEN THE GROUND IS FROZEN, WET, OR IN AN UNTILLABLE CONDITION. LOCATIONS TO BE SEEDED WILL BE DETERMINED BY THE ENGINEER.

ONLY THOSE TREES DESIGNATED BY THE ENGINEER OR LISTED IN THE TREE REMOVAL SCHEDULE SHALL BE REMOVED. THE CONTRACTOR SHALL PROTECT ALL REMAINING TREES FROM DAMAGE DUE TO HIS OPERATIONS.

THE FINISHED EARTHWORK SHALL HAVE A VEGETATION SUSTAINING SOIL COVERING THE TOP FOUR INCHES (100 MILLIMETERS) IN AREAS TO BE SEEDED OR SODDED. THE VEGETATION SUSTAINING SOIL REQUIRED WILL NOT BE PAID FOR SEPARATELY BUT WILL BE INCLUDED IN THE COST OF THE TREE REMOVAL PAY ITEMS.

ABANDONED UNDERGROUND UTILITIES THAT CONFLICT WITH CONSTRUCTION SHALL BE DISPOSED OF OUTSIDE THE LIMITS OF THE RIGHT OF WAY ACCORDING TO ARTICLE 202.03 OF THE STANDARD SPECIFICATIONS AND AS DIRECTED BY THE ENGINEER. THIS WORK WILL NOT BE PAID FOR SEPARATELY, BUT WILL BE INCLUDED IN THE COST OF EARTH EXCAVATION.

ANY REFERENCE TO A STANDARD IN THESE PLANS SHALL BE INTERPRETED TO MEAN THE EDITION AS INDICATED BY THE SUBNUMBER SHOWN IN THE LIST OF STANDARDS OR THE COPY INCLUDED IN THESE PLANS.

THE CONTRACTOR'S ATTENTION IS DIRECTED TO THE PRESENCE OF DEPARTMENT-OWNED UNDERGROUND UTILITIES WITHIN THE LIMITS OF THE PROPOSED IMPROVEMENT. THE CONTRACTOR SHALL REQUEST THE ILLINOIS DEPARTMENT OF TRANSPORTATION IN OTTAWA (815-434-8417) TO LOCATE THE UNDERGROUND FACILITIES, PROVIDING A MINIMUM OF 72 HOURS NOTICE. THE DEPARTMENT IS NOT A MEMBER OF THE JOINT UTILITY LOCATING INFORMATION FOR EXCAVATORS (JULIE) SYSTEM.

ALL DAMAGE TO DEPARTMENT OWNED UNDERGROUND FACILITIES, CAUSED BY THE CONTRACTOR SHALL BE REPAIRED TO THE SATISFACTION OF THE DEPARTMENT AT THE CONTRACTOR'S EXPENSE. THIS SHALL INCLUDE ALL TEMPORARY REPAIRS REQUIRED TO KEEP THE FACILITY OPERATIONAL WHILE MATERIAL IS BEING OBTAINED TO MAKE PERMANENT REPAIRS.

SUMMARY OF QUANTITIES				CONSTRUCTION CODE	
				100% STATE	100% STATE
CODE NO.	ITEM	UNIT	TOTAL QUANTITY	GRUNDY CO.	LIVINGSTON CO.
				ROADWAY	ROADWAY
				0031	0031
				RURAL	RURAL
20100110	TREE REMOVAL (6 TO 15 UNITS DIAMETER)	UNIT	2353	650	1703
20100210	TREE REMOVAL (OVER 15 UNITS DIAMETER)	UNIT	483	310	173
67100100	MOBILIZATION	L SUM	1	0.5	0.5
X2010310	TREE REMOVAL (SPECIAL)	UNIT	23	13	10
X2010400	STUMP REMOVAL ONLY	UNIT	50	50	0
X7010216	TRAFFIC CONTROL AND PROTECTION, (SPECIAL)	L SUM	1	0.5	0.5

STATE OF ILLINOIS  
DEPARTMENT OF TRANSPORTATION  
DISTRICT THREE

PREPARED BY: Don Beaul  
DISTRICT STUDIES & PLANS ENGINEER

DATE: August 25, 2014

EXAMINED BY: Harold Gray  
DISTRICT CONSTRUCTION ENGINEER

Wayne Phillips  
DISTRICT MATERIALS ENGINEER

Bruce A. Wheeler  
DISTRICT OPERATIONS ENGINEER

\*2015-1 TREE REMOVAL FOR EAB CONTROL

FILE NAME =	USER NAME = Schwankerg	DESIGNED -	REVISED -
o:\pwork\pwork\schwankerg\0410575\066E29-sh1-cover.dgn		DRAWN -	REVISED -
	PLOT SCALE = 100.0000 / in.	CHECKED -	REVISED -
	PLOT DATE = 8/25/2014	DATE -	REVISED -

STATE OF ILLINOIS  
DEPARTMENT OF TRANSPORTATION

**GENERAL NOTES**

SCALE: SHEET 1 OF 1 SHEETS STA. TO STA.

F.A.I. RTE.	SECTION	COUNTY	TOTAL SHEETS	SHEET NO.
80/55	*	GRUNDY/LIV.	20	2
CONTRACT NO. 66E29			ILLINOIS NON FED. AID PROJECT	

TREE REMOVAL SCHEDULE			
EB (MORRIS) REST AREA TREE NO.	SPECIAL	DIAMETER 6-15	DIAMETER OVER 15
	UNIT	UNIT	UNIT
1			17
1A			36
2			16.5
3			15.3
4			18.8
5		10.5	
6		10.5	
7		15	
8		8.5	
9		15	
10		14.3	
11		8	
12		11.5	
13		14.8	
14			15.3
15			18.3
16		14	
17			34
18		12.5	
19			25.8
20		8.3	
21	4		
22	3.5		
23		7.5	
24		10.5	
25		9	
26		7.5	
27		8	
28		9.5	
29		10	
30		9	
31		14	
32		11.5	
TOTALS	7.5	239.4	197

TREE REMOVAL SCHEDULE			
WB (MORRIS) REST AREA TREE NO.	SPECIAL	DIAMETER 6-15	DIAMETER OVER 15
	UNIT	UNIT	UNIT
1			16.5
2		13.5	
3		14	
4		12.5	
5		13	
6		11.5	
7		12	
8			15.5
9		12.4	
10		11.5	
11			15.3
12		11.5	
13		10.5	
14		11.5	
15		12	
16			15.5
17			15.2
18		12	
19		13	
20		8	
21		8	
22		6	
23		6.7	
30		8.6	
33		15	
34		14.5	
35			16
35A		14	
35B		13	
35C		14	
36		13	
37		9.2	
38		8.3	
49		6.7	
50	4.8		
51		5.7	
52		11.8	
53		12.1	
54		10.5	
55		8.9	
56		9.9	
57		9.2	
60		12	
61			19
62		14	
TOTALS	4.8	410	113

FILE NAME =	USER NAME = Schwankerg	DESIGNED -	REVISED -
ct:\pw\work\p\dot\schwankerg\d0410675\066E29\sh-t-schedule.dgn		DRAWN -	REVISED -
	PLOT SCALE = 100.0000' / in.	CHECKED -	REVISED -
	PLOT DATE = 8/22/2014	DATE -	REVISED -

**STATE OF ILLINOIS  
DEPARTMENT OF TRANSPORTATION**

<b>SCHEDULES</b>	
SCALE:	SHEET NO. 1 OF 1 SHEETS
STA.	TO STA.

*2015-1 TREE REMOVAL FOR EAB CONTROL				
F.A.I. RTE. 80/55	SECTION *	COUNTY GRUNDY/LIV.	TOTAL SHEETS 20	SHEET NO. 3
			CONTRACT NO. 66E29	
ILLINOIS FED. AID PROJECT				

TREE REMOVAL SCHEDULE					
NB (PONTIAC) REST AREA TREE NO.	DIAMETER 6-15	DIAMETER OVER 15	NB (PONTIAC) REST AREA TREE NO.	DIAMETER 6-15	DIAMETER OVER 15
	UNIT	UNIT		UNIT	UNIT
1	8		43	13	
2	10		44	7	
3	7		45	9	
4	7		46	10	
5	15		47	11	
6	12		48	13	
7	15		49	13	
8	14		50	10	
9	10		51	7	
10	14		52	10	
11	15		53	10	
12	11		54	9	
13	10		55	9	
14	9		56	7	
15	7		57	9	
16	6		58	9	
17	12		59	11	
18	10		60	14	
19	11		61	11	
20	10		62	11	
21	10		63	14	
22	11		64	6	
23			65	13	
24			66	10	
25	10		67	8	
26	9		68	12	
27	8		69	13	
28	7		70	14	
29	6		71	10	
30	7		72	10	
31	14		73	10	
32	13		74	12	
33	14		75	6	
34	13		76	8	
35	11		77	6	
36	12		78	6	
37	12		79	6	
38	12		80	8	
39	9		81	8	
40	10		82	8	
41	10		83	8	
42	10				
TOTAL	421	0	TOTAL	399	0

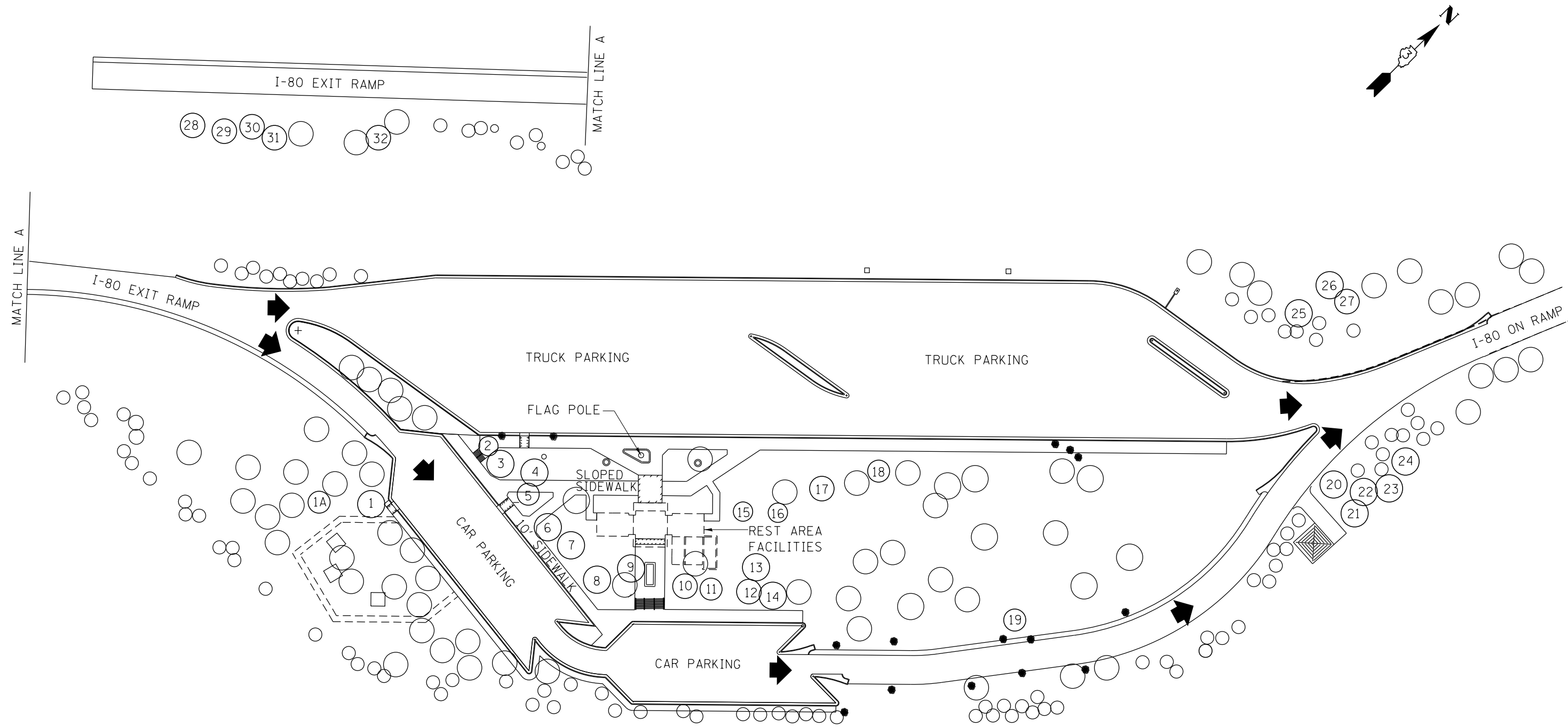
TREE REMOVAL SCHEDULE							
SB PONTIAC REST AREA TREE NO.	SPECIAL	DIAMETER 6-15	DIAMETER OVER 15	SB PONTIAC REST AREA TREE NO.	SPECIAL	DIAMETER 6-15	DIAMETER OVER 15
	UNIT	UNIT	UNIT		UNIT	UNIT	UNIT
1			16.5	50			19
2		12.8		51			17.5
3		12.5		52			20.5
4		14		53			18.3
5			15.5	54		8	
6		8.5		55		6	
7		14		56		11.7	
8		10.2		57	5.3		
9		11.5		58		13	
10		12.5		59		14	
11		10.5		60		9	
12		11.3		61		8	
13		10		62		7	
14		11		63		11	
15		12		64		7.5	
16		6.5		65		8	
17		8		66	5		
18			16	67		9.5	
19		8.2		68		8	
20		8		69		7	
21		7		70		6.5	
22			15.5	71		7	
23		9.8		72			17
24		13.7		73		12	
25		11		74		12	
26		10.7		75		7.5	
27		13		76			17
28		11.5		77		13.5	
29		9		78		14.5	
30		9.3		79		15	
31		13		80		11	
32		9.5		81		15	
33		7		82		12	
34		7.5		83		13	
35		13		84		13	
36		8		85		13.5	
37		9		86		13.3	
38		11.5		87		13	
39		10		88		13	
40		11		89		14.5	
41		10		90		6	
42		11		91		6	
43		9		92		7	
44		11.5		93		6	
45		14		94		6	
46		9.8		95		8	
47		8		96		6	
48		13.5		97		8	
49		8.3		98		6	
				99		6	
TOTALS	0	471.1	63.5	TOTALS	10.3	412	109.3

FILE NAME =	USER NAME = Schwankerg	DESIGNED -	REVISED -
c:\pw\work\p1dot\schwankerg\d0410675\066E29\sh-t-schedule.dgn		DRAWN -	REVISED -
	PLOT SCALE = 100.0000' / 1in.	CHECKED -	REVISED -
	PLOT DATE = 8/22/2014	DATE -	REVISED -

**STATE OF ILLINOIS  
DEPARTMENT OF TRANSPORTATION**

<b>SCHEDULES</b>			
SCALE:	SHEET NO. 1 OF 1 SHEETS	STA.	TO STA.

*2015-1 TREE REMOVAL FOR EAB CONTROL				
F.A.I. RTE.	SECTION	COUNTY	TOTAL SHEETS	SHEET NO.
80/55	*	GRUNDY/LIV.	20	4
CONTRACT NO. 66E29			ILLINOIS FED. AID PROJECT	



NOTE:  
ALL TREE LOCATIONS  
SHOWN ARE APPROXIMATE

# I-80 EB PLAN

NOT TO SCALE

FILE NAME =	USER NAME = Schwankerg	DESIGNED -	REVISED -
c:\pwork\pwork\schwanerg\d0410675\066E29-sht-details.dgn		DRAWN -	REVISED -
	PLOT SCALE = 116.6000' / in.	CHECKED -	REVISED -
*MODELNAME*	PLOT DATE = 8/22/2014	DATE -	REVISED -

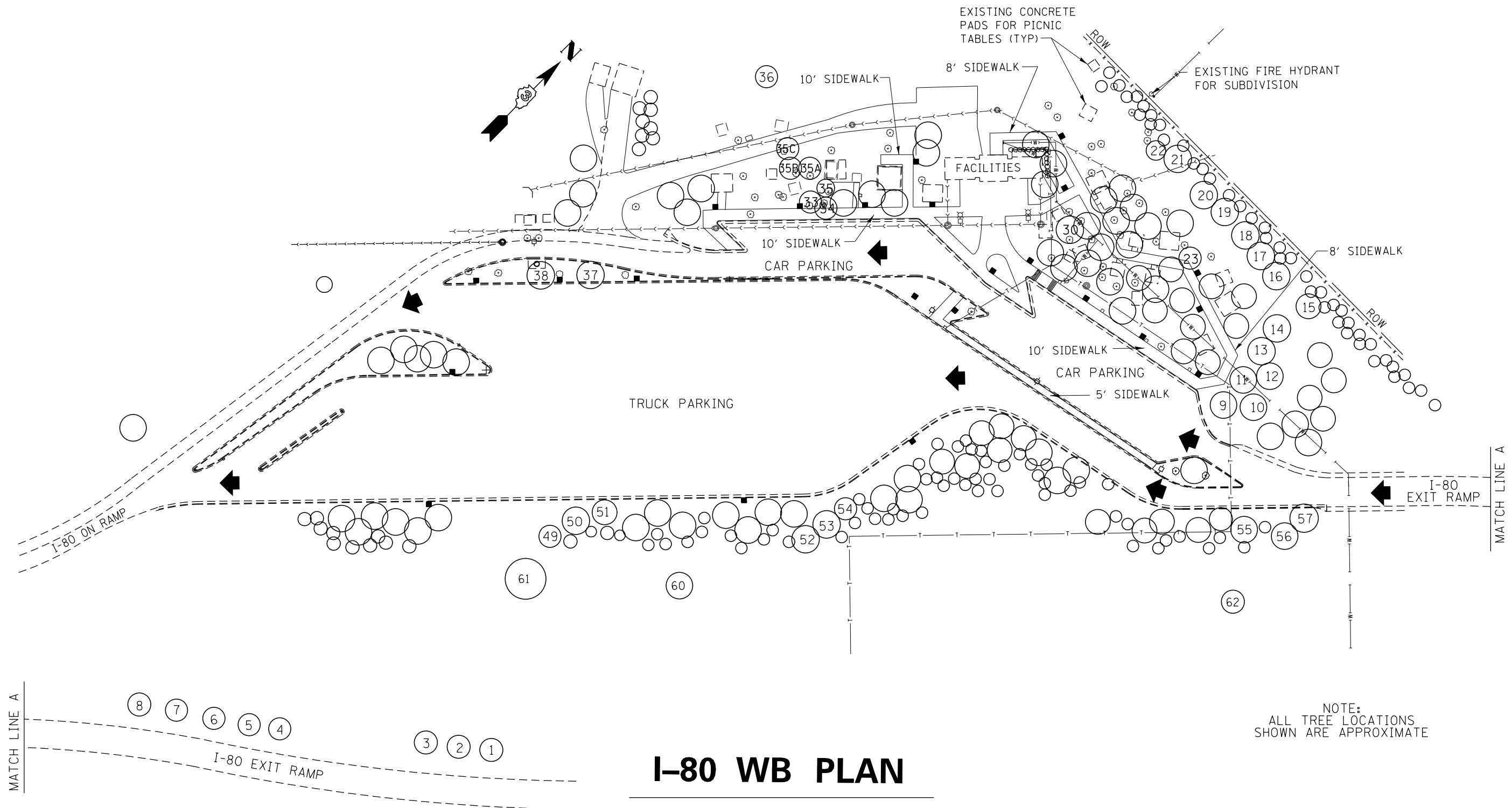
STATE OF ILLINOIS  
DEPARTMENT OF TRANSPORTATION

THREE RIVERS  
EASTBOUND REST AREA

SCALE:	SHEET	OF	SHEETS	STA.	TO	STA.
--------	-------	----	--------	------	----	------

\*2015-1 TREE REMOVAL FOR EAB CONTROL

F.A.I. RE.	SECTION	COUNTY	TOTAL SHEETS	SHEET NO.
80&55	*	GRUNDY/LIV.	20	5
CONTRACT NO. 66E29			ILLINOIS FED. AID PROJECT	



NOTE:  
ALL TREE LOCATIONS  
SHOWN ARE APPROXIMATE

# I-80 WB PLAN

NOT TO SCALE

FILE NAME =	USER NAME = Schwankerg	DESIGNED -	REVISED -
c:\pwork\pwork\schwankerg\d0410675\066E29-sht-details.dgn		DRAWN -	REVISED -
	PLOT SCALE = 1/16" = 1' / in.	CHECKED -	REVISED -
#MODELNAME#	PLOT DATE = 8/22/2014	DATE -	REVISED -

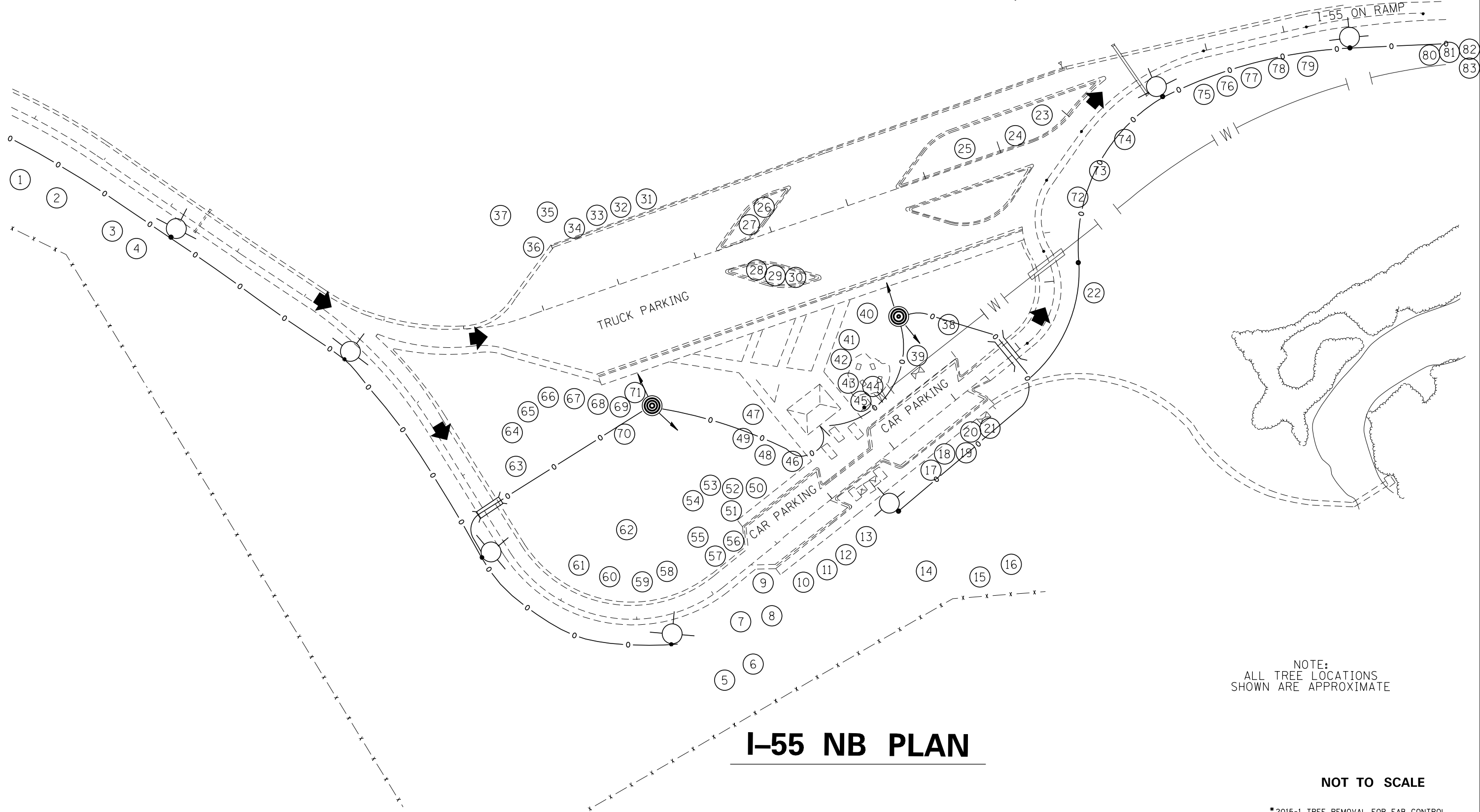
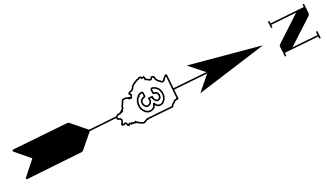
STATE OF ILLINOIS  
DEPARTMENT OF TRANSPORTATION

THREE RIVERS  
WESTBOUND REST AREA

SCALE:	SHEET	OF	SHEETS	STA.	TO	STA.
--------	-------	----	--------	------	----	------

\*2015-1 TREE REMOVAL FOR EAB CONTROL

F.A.I. R.E.	SECTION	COUNTY	TOTAL SHEETS	SHEET NO.
80&55	*	GRUNDY/LIV.	20	6
CONTRACT NO. 66E29			ILLINOIS FED. AID PROJECT	



NOTE:  
ALL TREE LOCATIONS  
SHOWN ARE APPROXIMATE

# I-55 NB PLAN

NOT TO SCALE

FILE NAME =	USER NAME = Schwankerg	DESIGNED -	REVISED -
c:\pwork\pwork\pwork\schwankerg\d0410675\066E29-sht-details.dgn		DRAWN -	REVISED -
	PLOT SCALE = 116.6000' / in.	CHECKED -	REVISED -
*MODELNAME*	PLOT DATE = 8/22/2014	DATE -	REVISED -

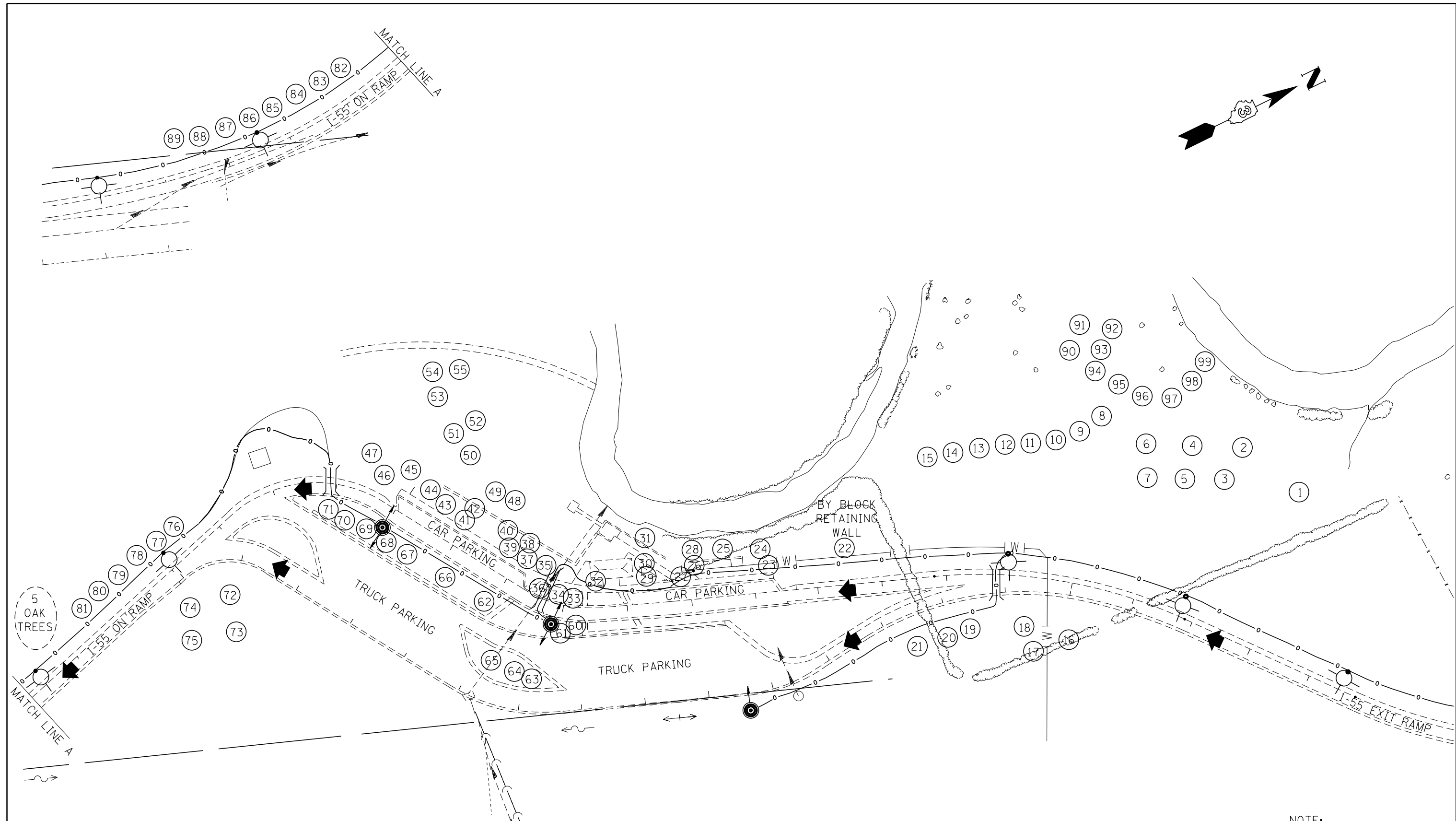
**STATE OF ILLINOIS  
DEPARTMENT OF TRANSPORTATION**

**LIMESTONE  
NORTHBOUND REST AREA**

SCALE:      SHEET      OF      SHEETS      STA.      TO      STA.

\*2015-1 TREE REMOVAL FOR EAB CONTROL

F.A.I. RTE.	SECTION	COUNTY	TOTAL SHEETS	SHEET NO.
80&55	*	GRUNDY/LIV.	20	7
			CONTRACT NO. 66E29	
ILLINOIS FED. AID PROJECT				



# I-55 SB PLAN

NOTE:  
ALL TREE LOCATIONS  
SHOWN ARE APPROXIMATE

NOT TO SCALE

\*2015-1 TREE REMOVAL FOR EAB CONTROL

FILE NAME =	USER NAME = Schwankerg	DESIGNED -	REVISED -
c:\pwork\work\p\idot\schwankerg\d0410675\066E29-sht-details.dgn		DRAWN -	REVISED -
	PLOT SCALE = 116.6000' / in.	CHECKED -	REVISED -
#MODELNAME#	PLOT DATE = 8/22/2014	DATE -	REVISED -

STATE OF ILLINOIS  
DEPARTMENT OF TRANSPORTATION

LIMESTONE  
SOUTHBOUND REST AREA

SCALE:	SHEET	OF	SHEETS	STA.	TO	STA.
--------	-------	----	--------	------	----	------

F.A.I. RTE.	SECTION	COUNTY	TOTAL SHEETS	SHEET NO.
80&55	*	GRUNDY/LIV.	20	8
CONTRACT NO. 66E29				
ILLINOIS FED. AID PROJECT				



F.A.I. RTE.	SECTION	COUNTY	TOTAL SHEETS	SHEET NO.
80	(32,47-4)RA-2	GRUNDY	20	1
FED. ROAD DIST. NO.	ILLINOIS	STATE AID PROJECT		

**INDEX OF SHEETS**

1. COVER SHEET
2. GENERAL NOTES
- 3 - 5. SUMMARY OF QUANTITIES
6. GENERAL SITE PLAN - EASTBOUND REST AREA
7. EXISTING STAIRWAY DETAILS - EASTBOUND REST AREA
8. PROPOSED STAIRWAY DETAILS - EASTBOUND REST AREA
9. GENERAL SITE PLAN - WESTBOUND REST AREA
10. SITE PLAN - WESTBOUND REST AREA
11. WATER MAIN LAYOUT DETAILS
- 12 - 13. METER VAULT, SPECIAL DETAILS
14. FIRE HYDRANT INSTALLATION DETAILS
15. VALVE VAULT, TYPE A, 4' DIAMETER
16. TYPE 1 FRAME, CLOSED LID
17. THRUST BLOCK DETAILS
18. TRENCH BACKFILL DETAILS
19. SIDEWALK DETAILS

**STANDARDS**

- 000001-04 STANDARD SYMBOLS, ABBREVIATIONS AND PATTERNS
- 602501 VALVE VAULT, TYPE A
- 602601-01 PRECAST REINFORCED CONCRETE FLAT SLAB TOP
- 602701-01 CAST IRON STEPS
- 665001-01 WOVEN WIRE FENCE
- 701801-03 LANE CLOSURE, MULTILANE 1W OR 2W CROSSWALK OR SIDEWALK CLOSURE
- 702001-06 TRAFFIC CONTROL DEVICES

**STATE OF ILLINOIS FOR INFORMATION ONLY**  
**DEPARTMENT OF TRANSPORTATION**  
**DIVISION OF HIGHWAYS**

**PROPOSED  
HIGHWAY PLANS**

**FAI ROUTE 80 (I-80)  
SECTION (32, 47-4)RA-2**

**PROJECT  
GRUNDY COUNTY**

**C-93-020-07**

**CONCRETE STAIR REMOVAL AND REPLACEMENT  
AND WATER MAIN INSTALLATION**

**D-93-002-07**

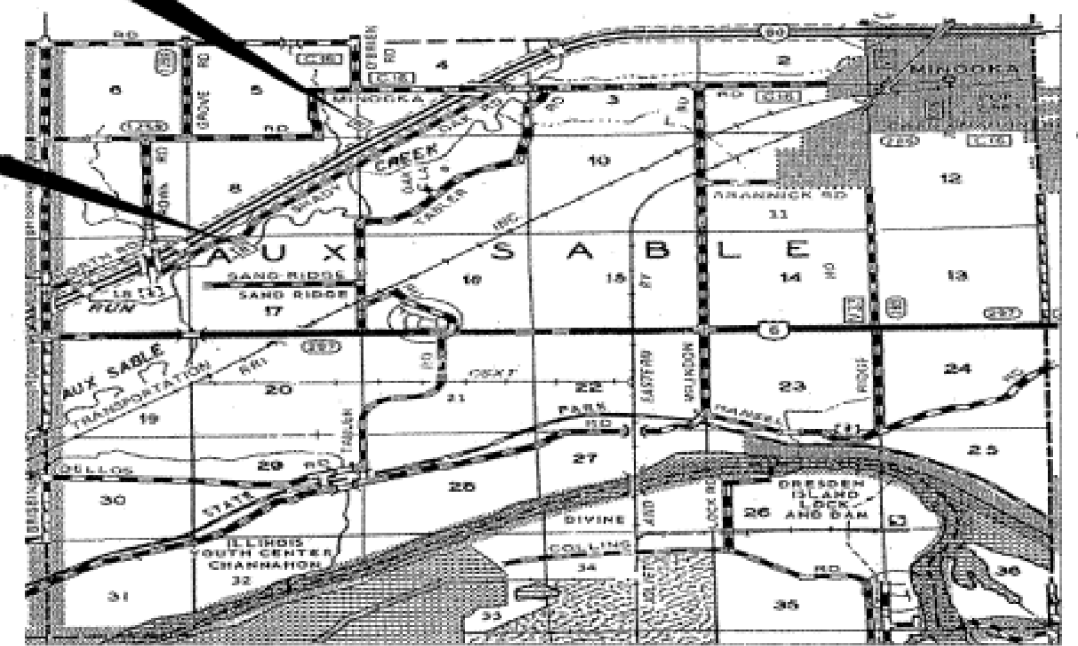


LOCATION OF SECTION INDICATED THUS: [arrow pointing to shaded area]

**FUNCTIONAL CLASSIFICATION**  
RURAL: INTERSTATE  
FAI ROUTE 80 (I-80)  
2005 ADT = 35700  
P.V = 686% M.U. = 24.6% S.U. = 6.7%

**PROJECT LOCATION**  
THREE RIVERS REST AREA  
FAI 80 WESTBOUND

**PROJECT LOCATION**  
THREE RIVERS REST AREA  
FAI 80 EASTBOUND



**LOCATION MAP  
SPOT IMPROVEMENT**

MICROFILMED \_\_\_\_\_  
REEL NUMBER \_\_\_\_\_  
AWARDED \_\_\_\_\_  
RESIDENT ENGINEER \_\_\_\_\_  
AS BUILT CHANGES WERE MADE  
ON THE FOLLOWING SHEETS \_\_\_\_\_

J.U.L.I.E.  
JOINT UTILITY LOCATION INFORMATION FOR EXCAVATION  
1-800-892-0123

DISTRICT 3 NO. (815) 434-6131  
PROJECT ENGINEER: TOM HUFNAGEL (815) 434-8418  
UNIT CHIEF: RON WOODSHANK (815) 434-8419

**CONTRACT NO. 66695**

GRUNDY COUNTY SECTION (32,47-4)RA-2 FAI 80 (I-80)

**STATE OF ILLINOIS  
DEPARTMENT OF TRANSPORTATION  
DIVISION OF HIGHWAYS**

SUBMITTED Dec 20 2006  
[Signature]  
DEPUTY DIRECTOR OF HIGHWAYS, REGION ENGINEER  
[Signature]  
[Signature]  
ENGINEER OF DESIGN AND ENVIRONMENT  
[Signature]  
[Signature]  
DIRECTOR, DIVISION OF HIGHWAYS

**PRINTED BY THE AUTHORITY  
OF THE STATE OF ILLINOIS**

DATE: 10/12/2006  
C:/projects/rest area/three rivers/details.dgn

FILE NAME	USER NAME	DESIGNED	REVISED	STATE OF ILLINOIS DEPARTMENT OF TRANSPORTATION	THREE RIVERS REST AREAS	F.A.I. RTE.	SECTION	COUNTY	TOTAL SHEETS	SHEET NO.
ct:\pw\work\p\dtdot\schwankerg\d0410675\066E29-sht-details.dgn	schwankerg	-	-			80&55	*	GRUNDY/LIV.	20	9
\$MODELNAME\$										

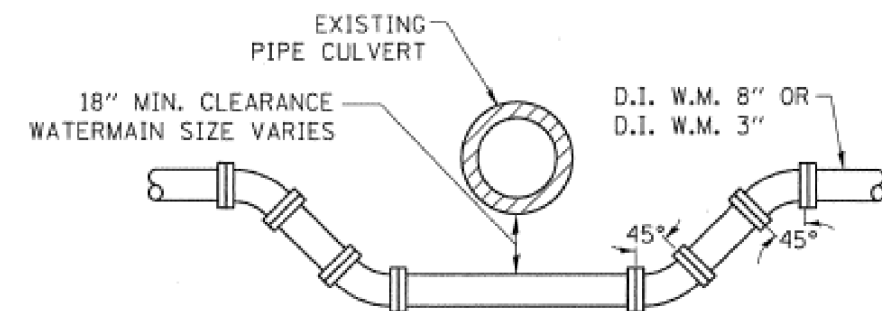
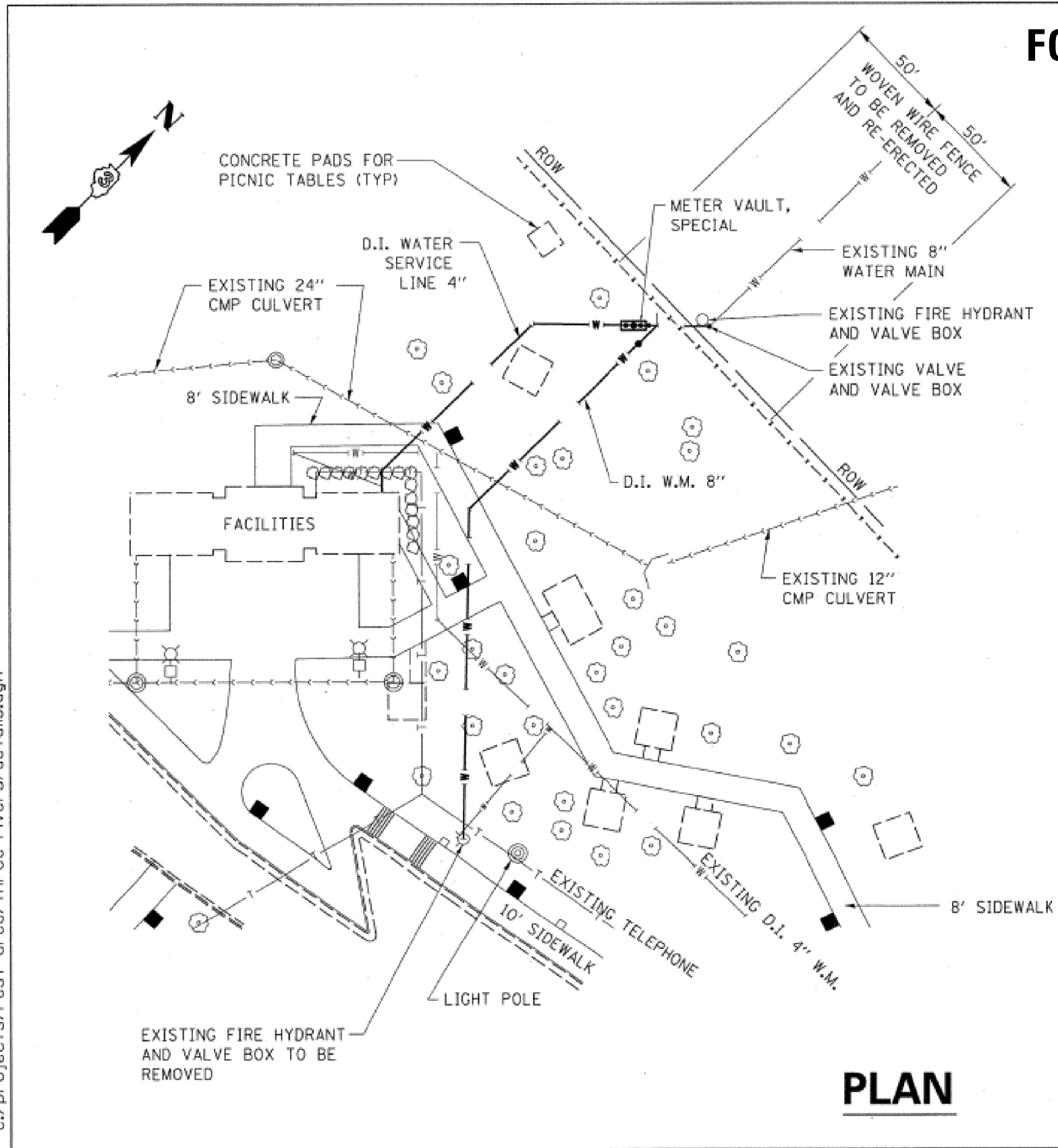
\*2015-1 TREE REMOVAL FOR EAB CONTROL

SCALE: SHEET OF SHEETS STA. TO STA.

ILLINOIS FED. AID PROJECT

F.A.I. R.T.C.	SECTION	COUNTY	TOTAL SHEETS	SHEET NO.
80	132,47-4)RA-2	GRUNDY	19	10
FED. ROAD DIST. NO.		ILLINOIS	STATE AID PROJECT	

# FOR INFORMATION ONLY



**WATER MAIN AND PIPE CULVERT SEPARATION DETAIL**

### GENERAL NOTES

1. PIPE MATERIAL WILL BE AS INDICATED ON THE PLANS.
2. TYPICAL DETAILS AS SHOWN IN THESE PLAN ILLUSTRATE THE ENGINEER'S CONCEPTION FOR INSTALLING WATER MAINS. THEY ARE NOT PRESENTED AS A SOLUTION TO ALL CONSTRUCTION PROBLEMS ENCOUNTERED IN THE FIELD. THE CONTRACTOR MAY ALTER HIS METHOD OF CONSTRUCTION TO SUIT FIELD CONDITIONS, PROVIDED HE SUBMITS HIS PROPOSED ALTERNATE TO THE ENGINEER FOR APPROVAL AND THAT HE USES MATERIAL ONLY AS DESIGNATED IN THE SPECIFICATIONS. NO ADDITIONAL COMPENSATION WILL BE ALLOWED FOR ANY CHANGES INSTIGATED BY THE CONTRACTOR.
3. ALL WATER MAIN CONSTRUCTION SHALL CONFORM TO THE "STANDARD SPECIFICATIONS FOR WATER MAIN CONSTRUCTION IN ILLINOIS," LATEST EDITION.
4. ALL WORK ON EXISTING WATER MAINS, AND SERVICES SHALL BE COORDINATED WITH THE CITY OF MINOOKA WATER DEPARTMENT. THE CITY WATER DEPARTMENT SHALL BE NOTIFIED A MINIMUM OF SEVENTY TWO (72) HOURS PRIOR TO THE START OF WORK.
5. IF A LEAD SERVICE IS ENCOUNTERED, THE CONTRACTOR SHALL REPLACE THE SERVICE LINE, INCLUDING THE CORPORATION STOP, FROM THE MAIN TO THE RIGHT-OR-WAY LINE. THIS WORK WILL BE PAID FOR ACCORDING TO ARTICLE 109.04 OF THE STANDARD SPECIFICATIONS.

DATE: 10/12/2006  
C:/projects/rest area/three rivers/details.dgn

## PLAN

GRUNDY COUNTY SECTION (32,47-4)RA-2 FAI 80 (I-80)

REVISIONS	
NAME	DATE

ILLINOIS DEPARTMENT OF TRANSPORTATION  
**SITE PLAN**  
**WESTBOUND REST AREA**  
F.A.I. ROUTE 80  
SECTION (32,47-4)RA-2  
GRUNDY COUNTY

FILE NAME =	USER NAME = Schwankerg	DESIGNED -	REVISED -
c:\pwork\pwork\dot\schwankerg\d0410675\066E29-sht-details.dgn		DRAWN -	REVISED -
		CHECKED -	REVISED -
		DATE -	REVISED -
\$MODELNAME\$	PLOT DATE = 8/22/2014		

STATE OF ILLINOIS  
DEPARTMENT OF TRANSPORTATION

THREE RIVERS  
WESTBOUND REST AREA

SCALE: SHEET OF SHEETS STA. TO STA.

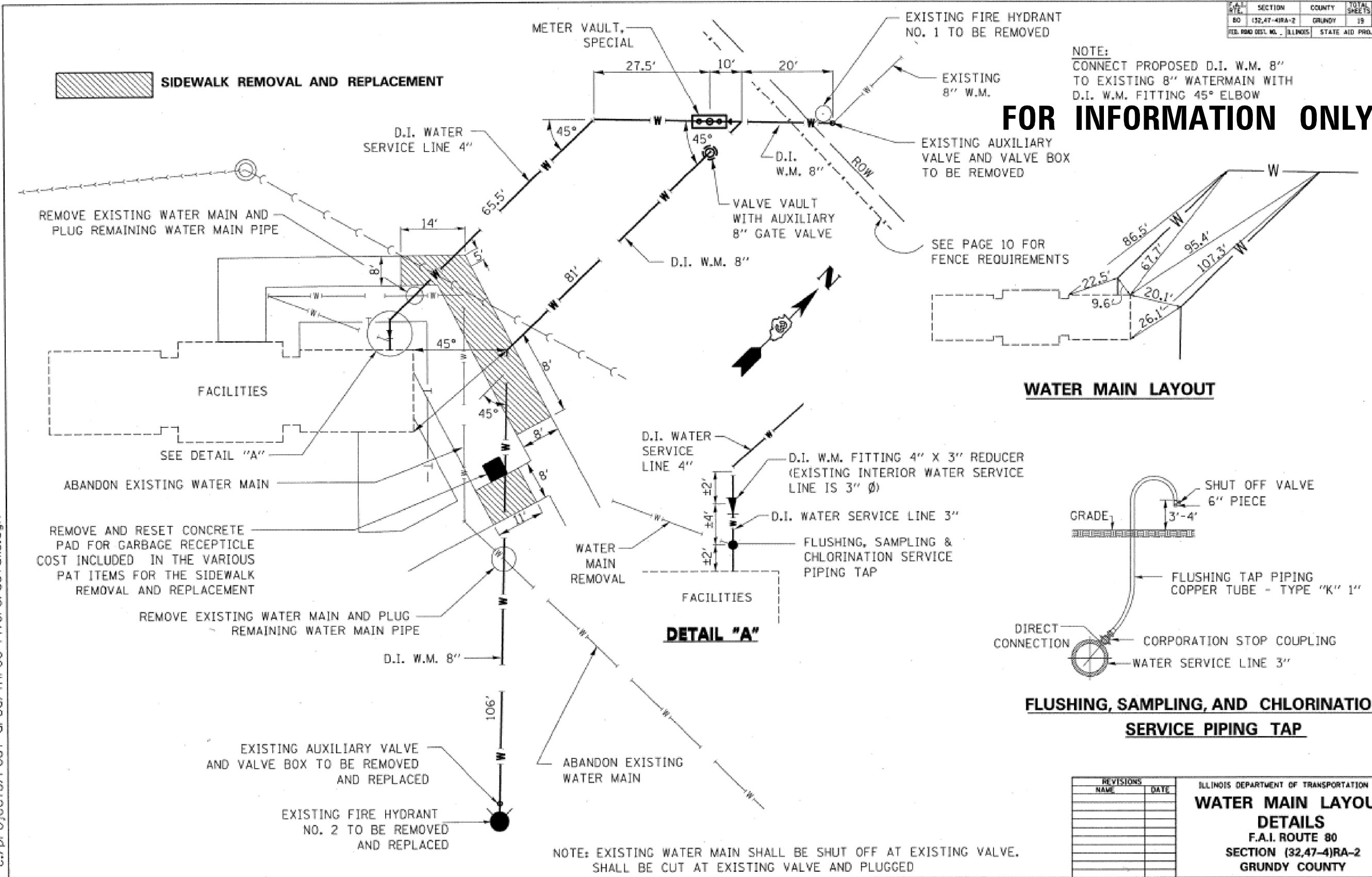
\*2015-1 TREE REMOVAL FOR EAB CONTROL

F.A.I. R.T.C.	SECTION	COUNTY	TOTAL SHEETS	SHEET NO.
80&55	*	GRUNDY/LIV.	20	10
CONTRACT NO. 66E29				
ILLINOIS FED. AID PROJECT				

F.A.I. SITE	SECTION	COUNTY	TOTAL SHEETS	SHEET NO.
80	32,47-4RA-2	GRUNDY	19	11
FED. ROAD DIST. NO.		ILLINOIS	STATE AID PROJECT	

NOTE:  
CONNECT PROPOSED D.I. W.M. 8"  
TO EXISTING 8" WATERMAIN WITH  
D.I. W.M. FITTING 45° ELBOW

## FOR INFORMATION ONLY



**WATER MAIN LAYOUT**

**DETAIL "A"**

**FLUSHING, SAMPLING, AND CHLORINATION SERVICE PIPING TAP**

REVISIONS		ILLINOIS DEPARTMENT OF TRANSPORTATION		
NAME	DATE	WATER MAIN LAYOUT DETAILS		
		F.A.I. ROUTE 80		
		SECTION (32,47-4)RA-2		
		GRUNDY COUNTY		

DATE: 10/12/2006  
C:/projects/rest area/three rivers/details.dgn

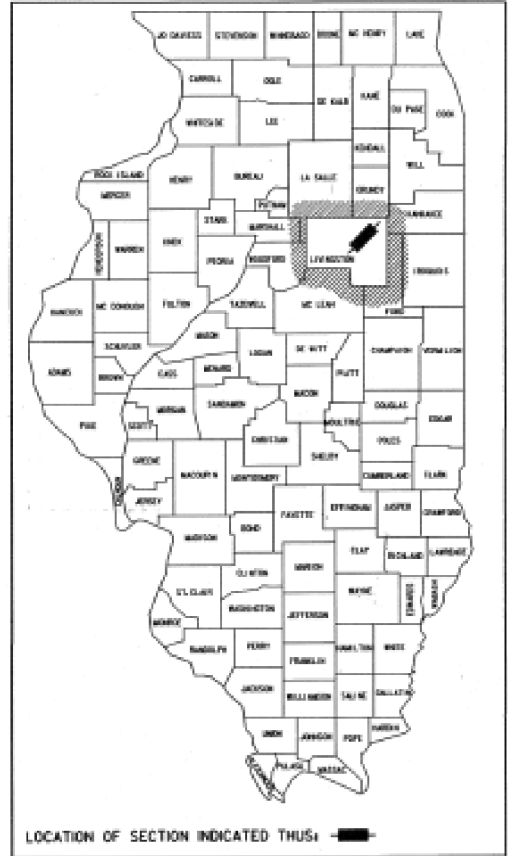
GRUNDY COUNTY SECTION (32,47-4)RA-2 FAI 80 (1-80)

FOR INFORMATION ONLY

STATE OF ILLINOIS  
 DEPARTMENT OF TRANSPORTATION  
 DIVISION OF HIGHWAYS  
**PLANS FOR PROPOSED  
 FEDERAL AID HIGHWAY**  
 F.A.I. ROUTE 55  
 SECTION (53-6) RA-1  
 PROJECT IR-55-5(88)193  
 LIVINGSTON COUNTY

F.A.I. RTE.	SECTION	COUNTY	TOTAL SHEET
55	(53-6) RA-1	LIVINGSTON	23
SHEET NO.			1

P-93-031-85



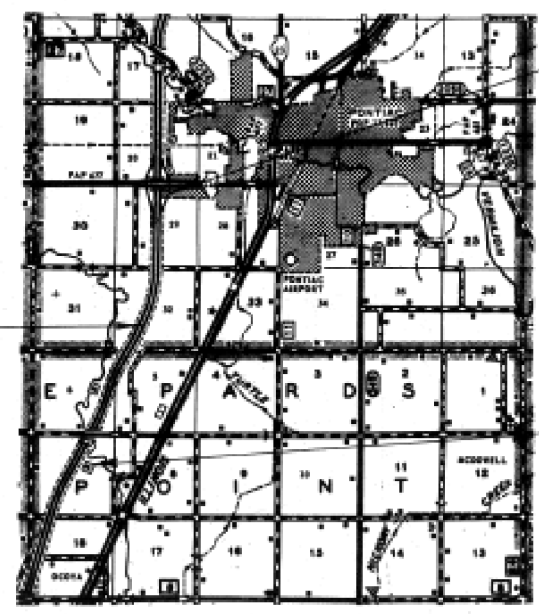
INDEX OF SHEETS

SHEET NO.	DESCRIPTION
1	TITLE SHEET
2	SUMMARY OF QUANTITIES
3-4	DETAILS
5-13	PLANS

STANDARDS

1526-7	VALVE VAULT, TYPE A
1686-4	SYMBOLS AND ABBREVIATIONS
2213-4	FRAME AND LIDS, TYPE I
2298-7	TYPICAL APPLICATION OF TRAFFIC CONTROL DEVICES
2299-10	DESIGN OF TRAFFIC CONTROL DEVICES
2300-3	FLAGMAN TRAFFIC CONTROL SIGN
2307-6	TYPICAL APPLICATION OF TRAFFIC CONTROL DEVICES SHORT-TIME OPERATION, DAY OR NIGHT
2313-5	TYPICAL APPLICATION OF TRAFFIC CONTROL DEVICES MULTILANE DIV. AND UNDIV., RURAL, DAY OR NIGHT
2314-5	TYPICAL APPLICATION OF TRAFFIC CONTROL DEVICES MULTILANE DIV. AND UNDIV., RURAL, DAY OR NIGHT
2354-1	PRECAST REINFORCED CONCRETE FLAT SLAB TOP
2362-2	CONCRETE HEADWALL FOR PIPE BRAINS
2395	MANHOLE TYPE A 6' DIAMETER

C-93-015-88



PLANS FOR WATER MAIN

PROJECT ENGINEER: LYLE SCHAUB  
 SQUAD CHIEF: BOB LITTLE  
 TOWNSHIP: EPPARDS POINT  
 J.U.L.I.E.: 1-800-892-0123  
**CONTRACT NO. 42964**

STATE OF ILLINOIS  
 DEPARTMENT OF TRANSPORTATION  
 DIVISION OF HIGHWAYS

SUBMITTED 09-29-87  
*R.H. Blasius* DISTRICT ENGINEER  
 EXAMINED 10-28-87  
*W. Wilson* ENGINEER OF PLANS AND CONTRACTS  
 PASSED 10-28-87  
*John A. O'Neil* ENGINEER OF DESIGN  
 APPROVED 10-28-87  
*John A. O'Neil* DIRECTOR, DIVISION OF HIGHWAYS

Revised set 12-01-87

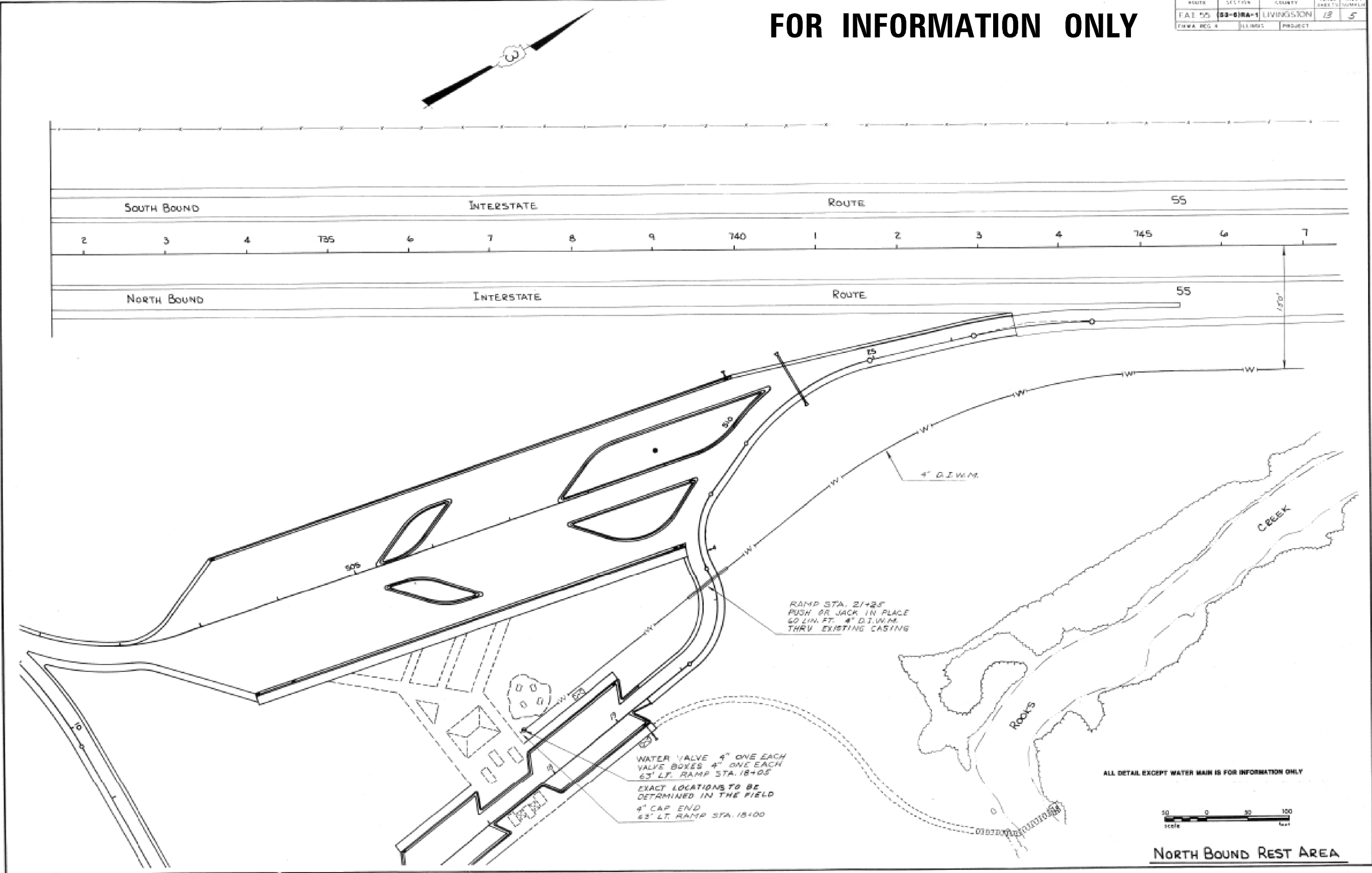
LIVINGSTON COUNTY SECTION: (53-6) RA-1 F.A. ROUTE 55

FILE NAME :	USER NAME : Schwankerg	DESIGNED -	REVISED -	STATE OF ILLINOIS DEPARTMENT OF TRANSPORTATION	LIMESTONE REST AREAS	F.A.I. RTE.	SECTION	COUNTY	TOTAL SHEETS	SHEET NO.
ci:\p\work\p\midot\schwankerg\d0410675\066E29-sht-details.dgn	DRAWN -	REVISED -	808&55			*	GRUNDY/LIV.	20	12	
\$MODELNAME\$	PLOT SCALE = 116.6000' / 1" in.	CHECKED -	REVISED -			CONTRACT NO. 66E29				
	PLOT DATE = 8/22/2014	DATE -	REVISED -			ILLINOIS FED. AID PROJECT				
					SCALE:	SHEET	OF	SHEETS	STA.	TO STA.

\*2015-1 TREE REMOVAL FOR EAB CONTROL

# FOR INFORMATION ONLY

ROUTE	SECTION	COUNTY	TOTAL SHEETS	SHEET NO.
F.A.I. 55	53-01RA-1	LIVINGSTON	13	5
ILLINOIS PROJECT				



ALL DETAIL EXCEPT WATER MAIN IS FOR INFORMATION ONLY



**NORTH BOUND REST AREA**

\*2015-1 TREE REMOVAL FOR EAB CONTROL

FILE NAME =	USER NAME = Schwankerg	DESIGNED -	REVISED -
c:\pwork\pwork\schwankerg\d0410675\066E29-sht-details.dgn		DRAWN -	REVISED -
	PLOT SCALE = 116.6000' / in.	CHECKED -	REVISED -
\$MODELNAME\$	PLOT DATE = 8/22/2014	DATE -	REVISED -

**STATE OF ILLINOIS  
DEPARTMENT OF TRANSPORTATION**

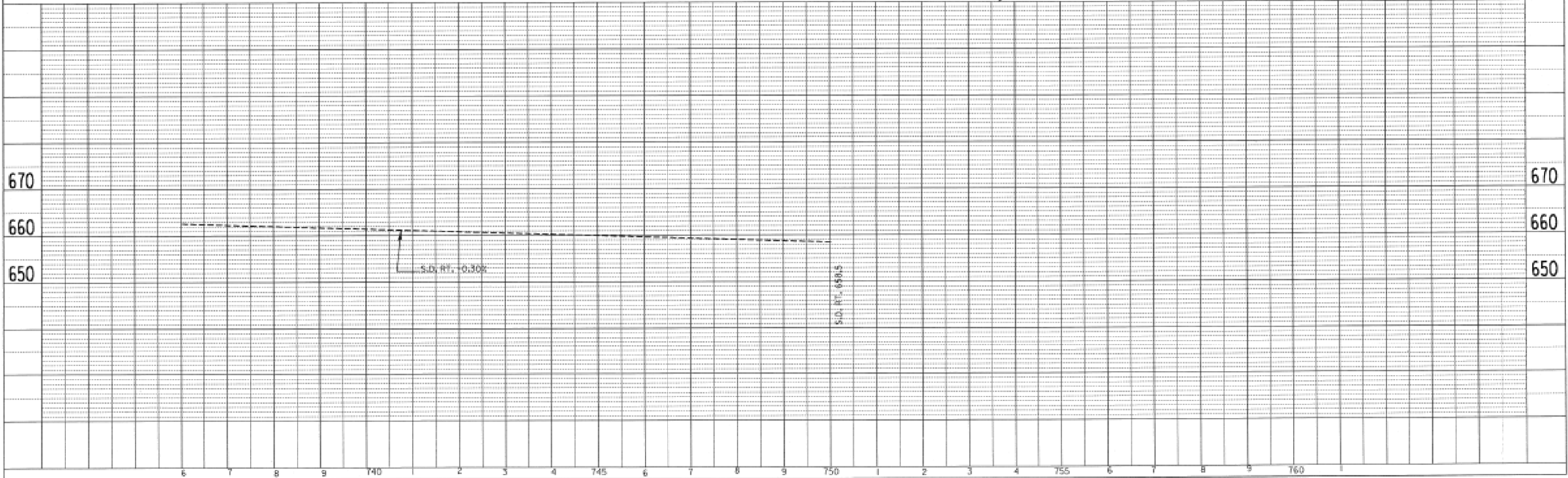
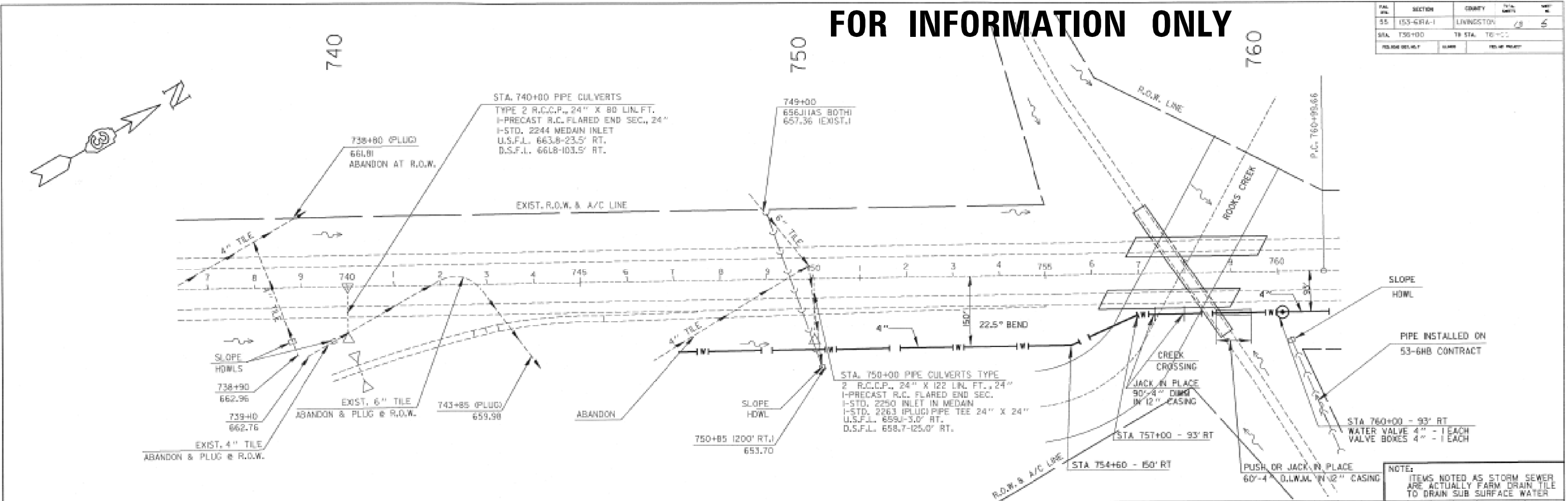
**LIMESTONE  
NORTHBOUND REST AREA**

SCALE: SHEET OF SHEETS STA. TO STA.

F.A.I. RTE.	SECTION	COUNTY	TOTAL SHEETS	SHEET NO.
80855	*	GRUNDY/LIV.	20	13
CONTRACT NO. 66E29				
ILLINOIS FED. AID PROJECT				

# FOR INFORMATION ONLY

PAL. NO.	SECTION	COUNTY	TOTAL SHEETS	SHEET NO.
55	53-6RA-1	LIVINGSTON	18	6
STA. 750+00	TO STA. 760+00			
DESIGN DELAY	CLASS	FIELD READY		



NOTE:  
ITEMS NOTED AS STORM SEWER  
ARE ACTUALLY FARM DRAIN TILE  
TO DRAIN SUB SURFACE WATER

DATE	BY	REVISION

DATE	BY	REVISION

FILE NAME =	USER NAME = Schwankerg	DESIGNED -	REVISED -
c:\p\work\p\dot\schwankerg\d0410675\066E29-sht-details.dgn		DRAWN -	REVISED -
\$MODELNAME\$	PLOT SCALE = 1/16" = 1' / in.	CHECKED -	REVISED -
	PLOT DATE = 8/22/2014	DATE -	REVISED -

STATE OF ILLINOIS  
DEPARTMENT OF TRANSPORTATION

LIMESTONE  
NORTHBOUND REST AREA

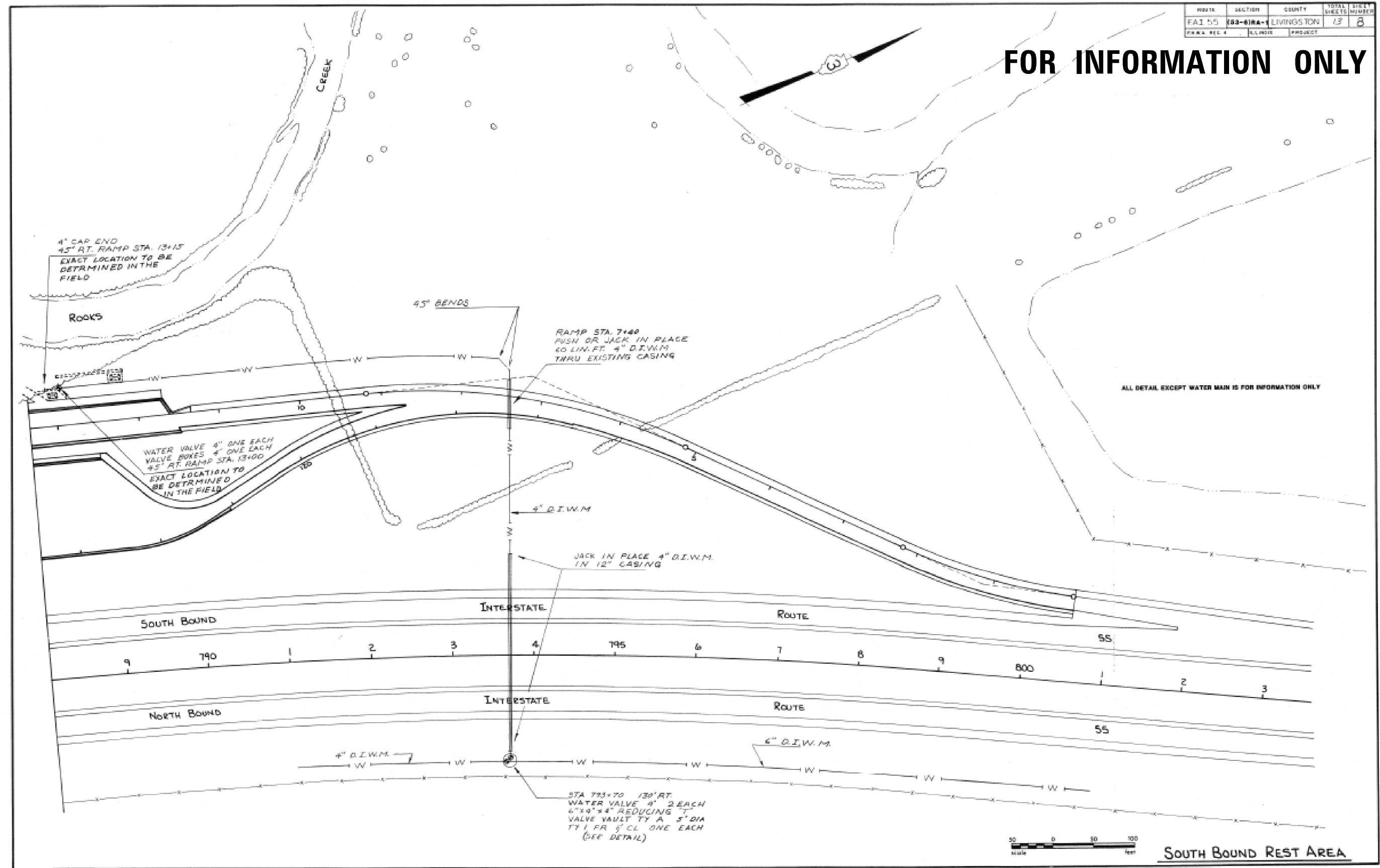
SCALE: SHEET OF SHEETS STA. TO STA.

\*2015-1 TREE REMOVAL FOR EAB CONTROL

F.A.I. RTE.	SECTION	COUNTY	TOTAL SHEETS	SHEET NO.
80&55	*	GRUNDY/LIV.	20	14
CONTRACT NO. 66E29				
ILLINOIS FED. AID PROJECT				

ROUTE	SECTION	COUNTY	TOTAL SHEETS	SHEET NUMBER
FAI 55	83-81A-1	LIVINGSTON	13	8
PARA. REC. #	ILLINOIS	PROJECT		

**FOR INFORMATION ONLY**



ALL DETAIL EXCEPT WATER MAIN IS FOR INFORMATION ONLY



**SOUTH BOUND REST AREA**

\*2015-1 TREE REMOVAL FOR EAB CONTROL

FILE NAME =	USER NAME = Schwankerg	DESIGNED -	REVISED -
c:\pwwork\pwwork\schwankerg\d0410675\066E29-sht-details.dgn		DRAWN -	REVISED -
	PLOT SCALE = 1/16" = 1' / in.	CHECKED -	REVISED -
\$MODELNAME\$	PLOT DATE = 8/22/2014	DATE -	REVISED -

**STATE OF ILLINOIS  
DEPARTMENT OF TRANSPORTATION**

**LIMESTONE  
SOUTHBOUND REST AREA**

SCALE:	SHEET	OF	SHEETS	STA.	TO	STA.
--------	-------	----	--------	------	----	------

F.A.I. R.E.	SECTION	COUNTY	TOTAL SHEETS	SHEET NO.
80855	*	GRUNDY/LIV.	20	15
			CONTRACT NO. 66E29	
ILLINOIS FED. AID PROJECT				

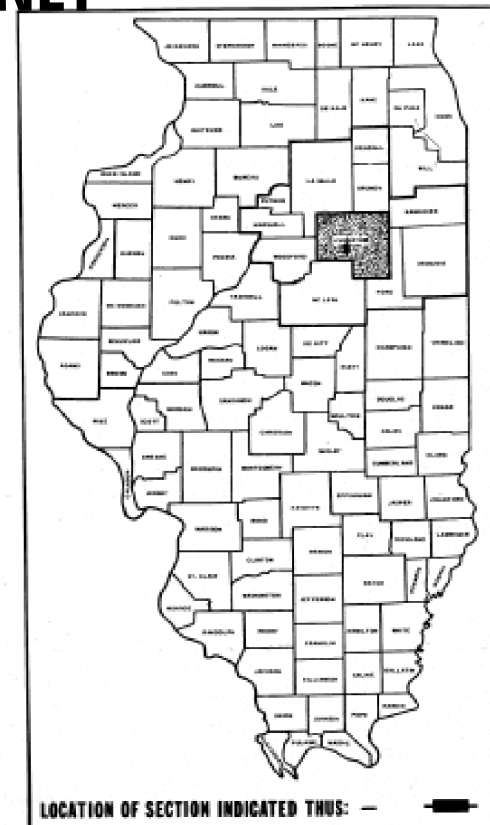
STATE OF ILLINOIS  
DEPARTMENT OF TRANSPORTATION  
DIVISION OF HIGHWAYS

PLANS FOR PROPOSED  
FEDERAL AID HIGHWAY

F.A.I. ROUTE 55  
SECTION (53-6 & 53-5)RA-L  
LIVINGSTON COUNTY  
PROJECT ACIR-55-5(91)193

ROUTE	SECTION	COUNTY	TOTAL SHEETS	SHEET NUMBER
F.A.I. 55	#	LIVINGSTON	22	1
F.H.W.A. REG. 4 ILLINOIS PROJECT ACIR-55-5(91)193				
*(53-6 & 53-5)RA-L				

P93-031-89



LOCATION OF SECTION INDICATED THUS: —

**INDEX OF SHEETS**

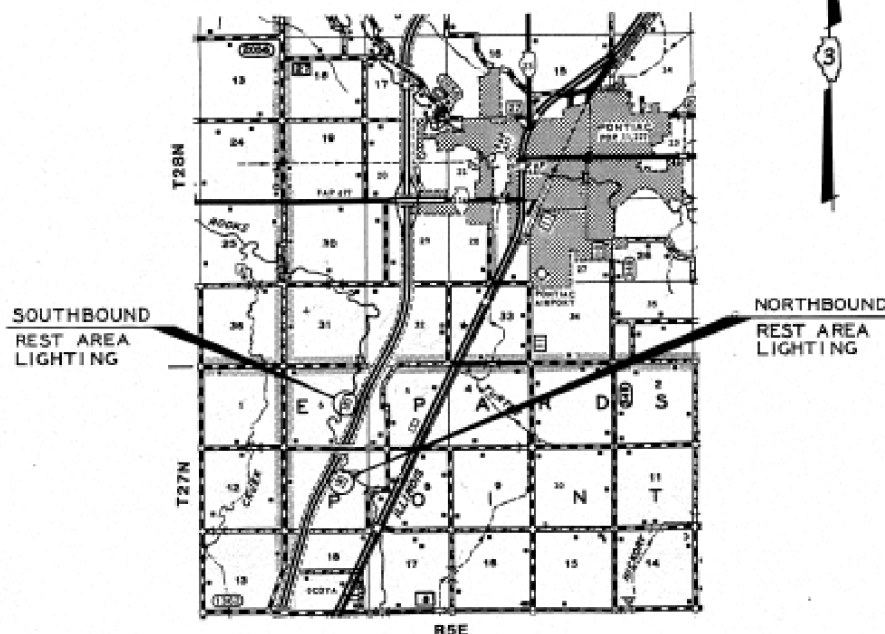
1	TITLE SHEET
2	SUMMARY OF QUANTITIES, GENERAL NOTES
3	DETAILS
4-5	NORTHBOUND REST AREA PLAN SHEETS
6-7	SOUTHBOUND REST AREA PLAN SHEETS
8	LIGHT POLE FOUNDATION
9	POLE STANDARDS
10	LIGHT TOWER & FOUNDATION
11	OVERHEAD SIGN STRUCTURES - CANTILEVER GENERAL PLAN - ALUMINUM TRUSS & STEEL POST
12	OVERHEAD SIGN STRUCTURES - CANTILEVER DRILLED SHAFT FOUNDATION DETAILS
13-15	OVERHEAD SIGN STRUCTURES - CANTILEVER WALKWAY DETAILS
16	TRAFFIC STANDARD 2147-7
17-18	TRAFFIC STANDARD 2330-2 (SPECIAL)
19	TRAFFIC STANDARD 2341-1
20-22	ARCHITECTURAL DRAWINGS FOR BUILDING (FOR INFORMATION ONLY.)

**STANDARDS**

1086-4	SYMBOLS AND ABBREVIATIONS
2230-15	STEEL PLATE BEAM GUARDRAIL
2248-7	TYPICAL APPLICATION OF TRAFFIC CONTROL DEVICES
2349-10	DESIGN OF TRAFFIC CONTROL DEVICES
2380-3	FLAGMAN TRAFFIC CONTROL SIGN
2513-3	TYPICAL APPLICATION OF TRAFFIC CONTROL DEVICES MULTILANE DIV. AND UNDIV. RURAL, DAY OR NIGHT
2514-5	TYPICAL APPLICATION OF TRAFFIC CONTROL DEVICES MULTILANE DIV. AND UNDIV. RURAL, DAY OR NIGHT
2519-4	SIGN PANEL MOUNTING DETAILS
2536-4	TRAFFIC BARRIER TERMINAL, TYPE 1 AND 1A
2537-2	TRAFFIC BARRIER TERMINAL, TYPE 2
2100-7	WOVEN WIRE FENCE

MICROFILMED REEL NUMBER AWARDED  
RESIDENT ENGINEER  
AS BUILT CHANGES WERE MADE ON THE FOLLOWING SHEETS

C93-050-89



PROJECT ENGINEER A. R.  
SQUAD: P. GUYON

CONTRACT NUMBER 86020

LIVINGSTON COUNTY SECTION (53-6&53-5)RA-L F.A. ROUTE 55

STATE OF ILLINOIS  
DEPARTMENT OF TRANSPORTATION  
DIVISION OF HIGHWAYS

SUBMITTED: 1/20 19 89  
EXAMINED: 2-7 19 89  
PASSED: 2-7 19 89  
APPROVED: 2-7 19 89

STATE ENGINEER  
RESIDENT ENGINEER  
ENGINEER OF PLANS AND CONTRACTS  
ENGINEER OF RECORD  
DEPUTY DIVISION ENGINEER

DEPARTMENT OF TRANSPORTATION  
FEDERAL HIGHWAY ADMINISTRATION

APPROVED: \_\_\_\_\_  
DIVISION ADMINISTRATOR DATE

FILE NAME =	USER NAME = Schwankerg	DESIGNED -	REVISED -
c:\pwork\pwork\schwankerg\d0410675\066E29-shr-details.dgn		DRAWN -	REVISED -
		CHECKED -	REVISED -
\$MODELNAME\$	PLOT DATE = 8/22/2014	DATE -	REVISED -

STATE OF ILLINOIS  
DEPARTMENT OF TRANSPORTATION

LIMESTONE REST AREAS	
SCALE:	SHEET OF SHEETS STA. TO STA.

\*2015-1 TREE REMOVAL FOR EAB CONTROL

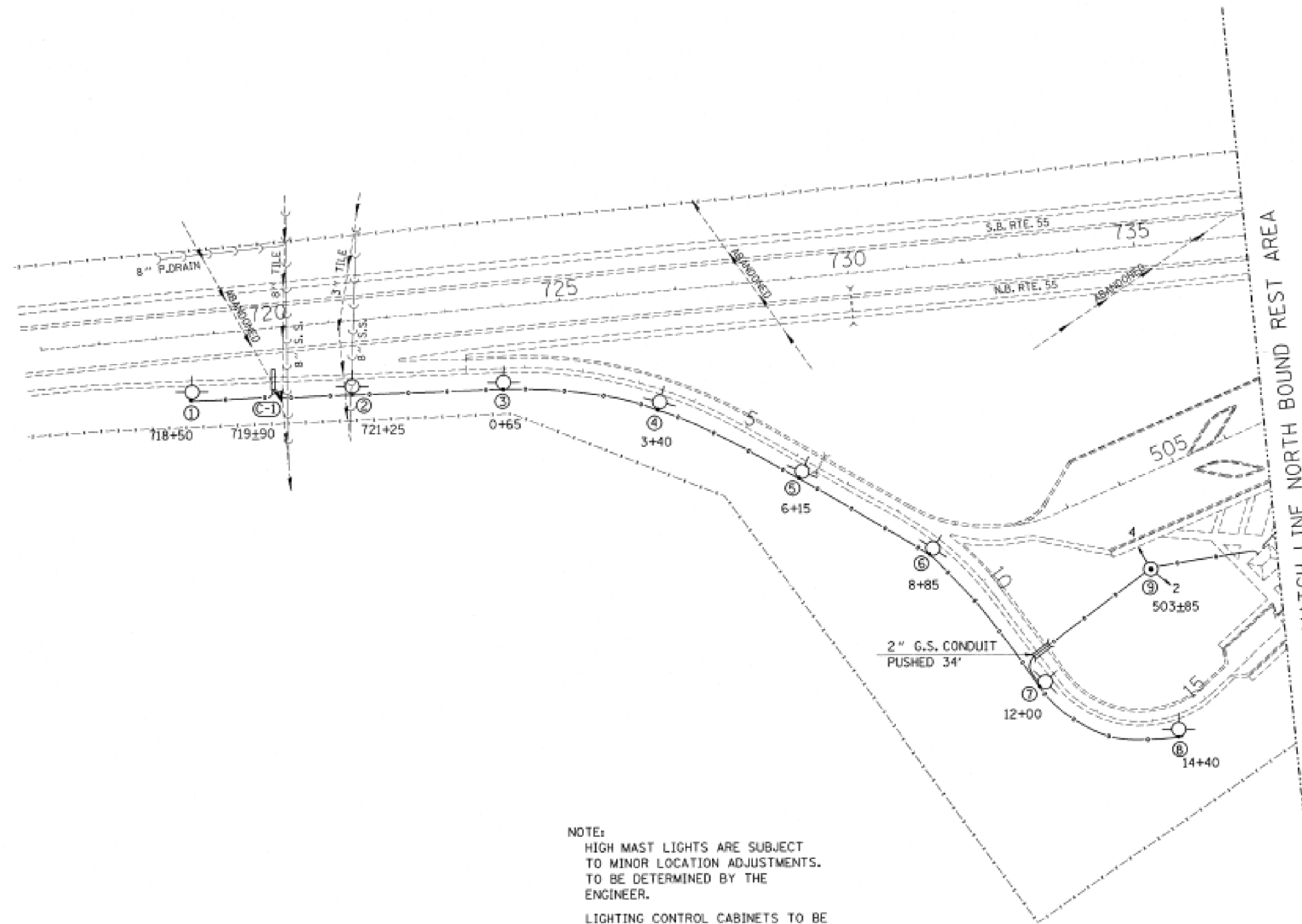
F.A.I. RTE.	SECTION	COUNTY	TOTAL SHEETS	SHEET NO.
80&55	*	GRUNDY/LIV.	20	16
CONTRACT NO. 66E29				
ILLINOIS FED. AID PROJECT				



# FOR INFORMATION ONLY

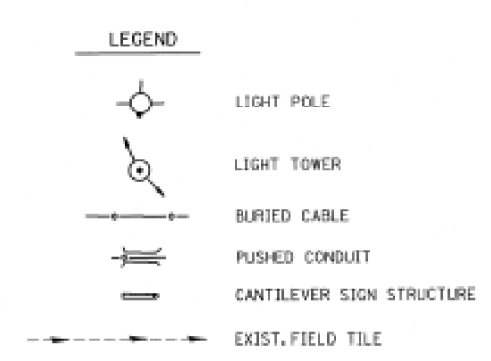
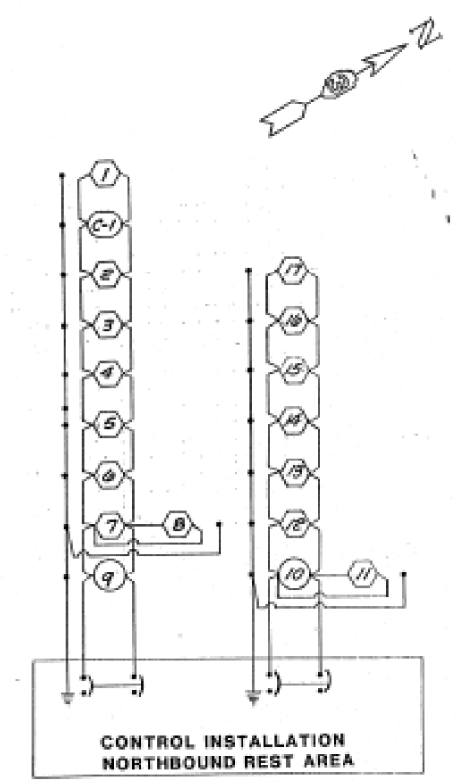
F.A.I. NO.	SECTION	COUNTY	TOTAL SHEETS	SHEET NO.
55	*	LIVINGSTON	22	4
STA.	TO STA.			
F.I.L. NO. (SCALE)	NUMBER	FIELD PROJECT		

\* 53-6 & 53-5 RA-L



NOTE:  
HIGH MAST LIGHTS ARE SUBJECT TO MINOR LOCATION ADJUSTMENTS. TO BE DETERMINED BY THE ENGINEER.

LIGHTING CONTROL CABINETS TO BE LOCATED INSIDE MAIN REST AREA BUILDING.



REVISIONS		
NAME	DATE	
LMT	1-3-89	

ILLINOIS DEPARTMENT OF TRANSPORTATION  
DRAWN BY C.A.P.D.

## NORTH BOUND REST AREA LIGHTING LOCATIONS

DATE 12-30-88  
DRAWN BY L.M.T.  
CHECKED BY

FILE NAME =	USER NAME = Schwankerg	DESIGNED -	REVISED -
c:\pwork\pwork\schwankerg\d0410675\066E29-shr-details.dgn		DRAWN -	REVISED -
\$MODELNAME\$	PLOT SCALE = 116.6000' / in.	CHECKED -	REVISED -
	PLOT DATE = 8/22/2014	DATE -	REVISED -

STATE OF ILLINOIS  
DEPARTMENT OF TRANSPORTATION

LIMESTONE NORTHBOUND REST AREA			
SCALE:	SHEET	OF SHEETS	STA. TO STA.

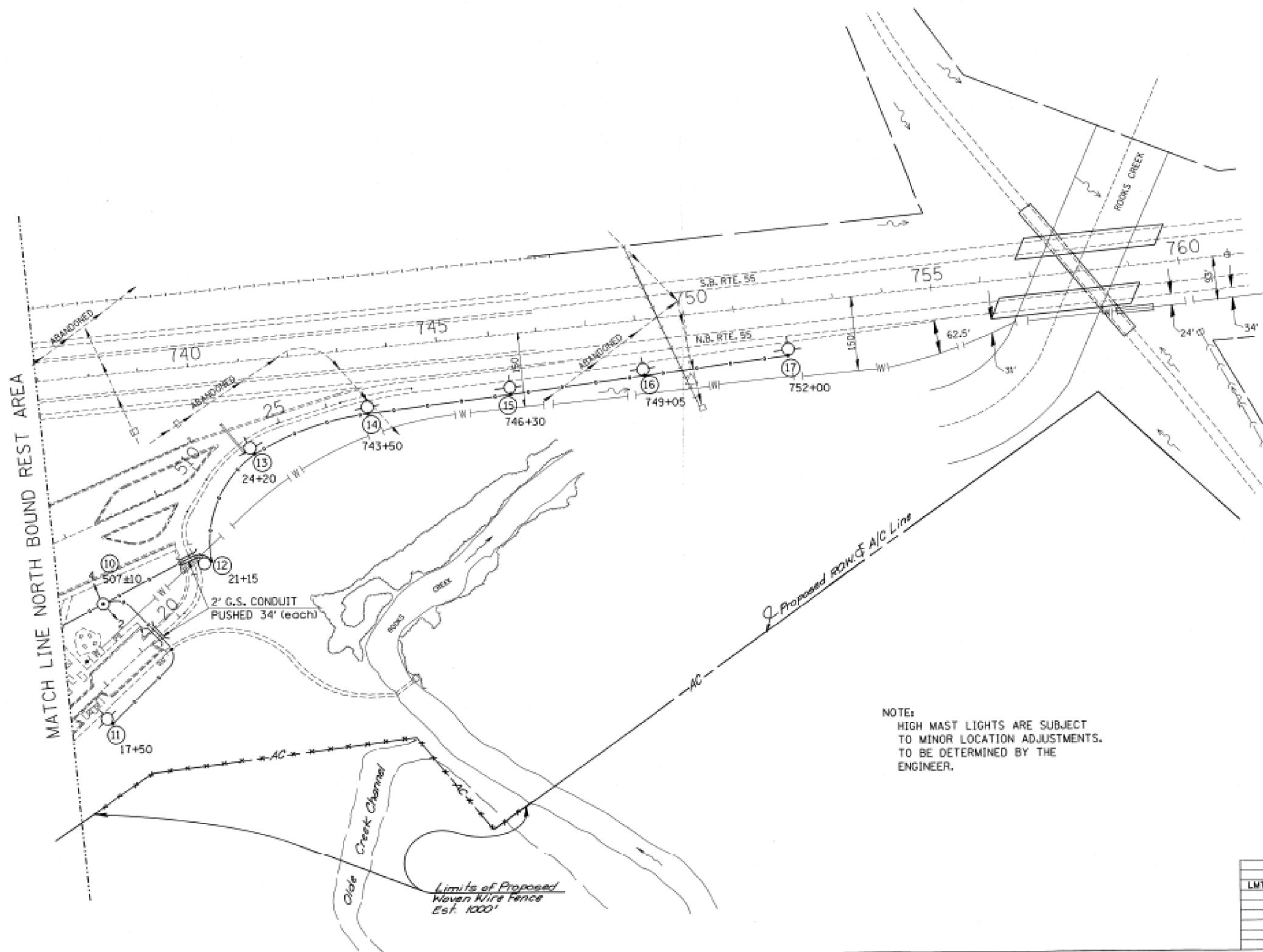
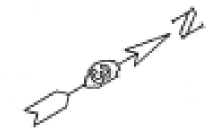
\*2015-1 TREE REMOVAL FOR EAB CONTROL

F.A.I. RTE.	SECTION	COUNTY	TOTAL SHEETS	SHEET NO.
80&55	*	GRUNDY/LIV.	20	17

CONTRACT NO. 66E29  
ILLINOIS FED. AID PROJECT

# FOR INFORMATION ONLY

TAL. NO.	SECTION	COUNTY	TOTAL SHEETS	SHEET NO.
55	*	LIVINGSTON	22	5
STA.	TO STA.			
REL. ROAD DISTANCE	ILLINOIS	FED. AID PROJECT		
* 53-6 & 53-5 RA-L				



**LEGEND**

- LIGHT POLE
- LIGHT TOWER
- BURIED CABLE
- PUSHED CONDUIT
- CANTILEVER SIGN STRUCTURE
- EXIST. FIELD TILE

**NOTE:**  
HIGH MAST LIGHTS ARE SUBJECT TO MINOR LOCATION ADJUSTMENTS. TO BE DETERMINED BY THE ENGINEER.



ILLINOIS DEPARTMENT OF TRANSPORTATION  
DRAWN BY C.A.D.O.

**NORTH BOUND REST AREA LIGHTING LOCATIONS**

DATE 12-30-88  
DRAWN BY L.M.T.  
CHECKED BY

REVISIONS	
NAME	DATE
LMT	1-3-89

9-JAN-89 11:47:48  
2F26212.002D30189BA.DGN

FILE NAME =	USER NAME = Schwankerg	DESIGNED -	REVISED -
c:\pwork\pwork\schwankerg\d0410675\066E29-shd-details.dgn		DRAWN -	REVISED -
	PLOT SCALE = 1:16,600 1" = 166'	CHECKED -	REVISED -
\$MODELNAME\$	PLOT DATE = 8/22/2014	DATE -	REVISED -

**STATE OF ILLINOIS  
DEPARTMENT OF TRANSPORTATION**

**LIMESTONE  
NORTHBOUND REST AREA**

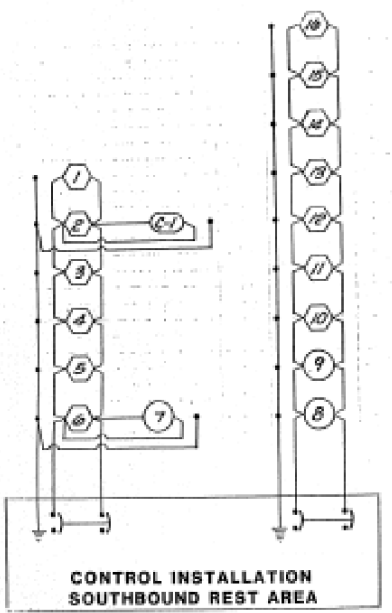
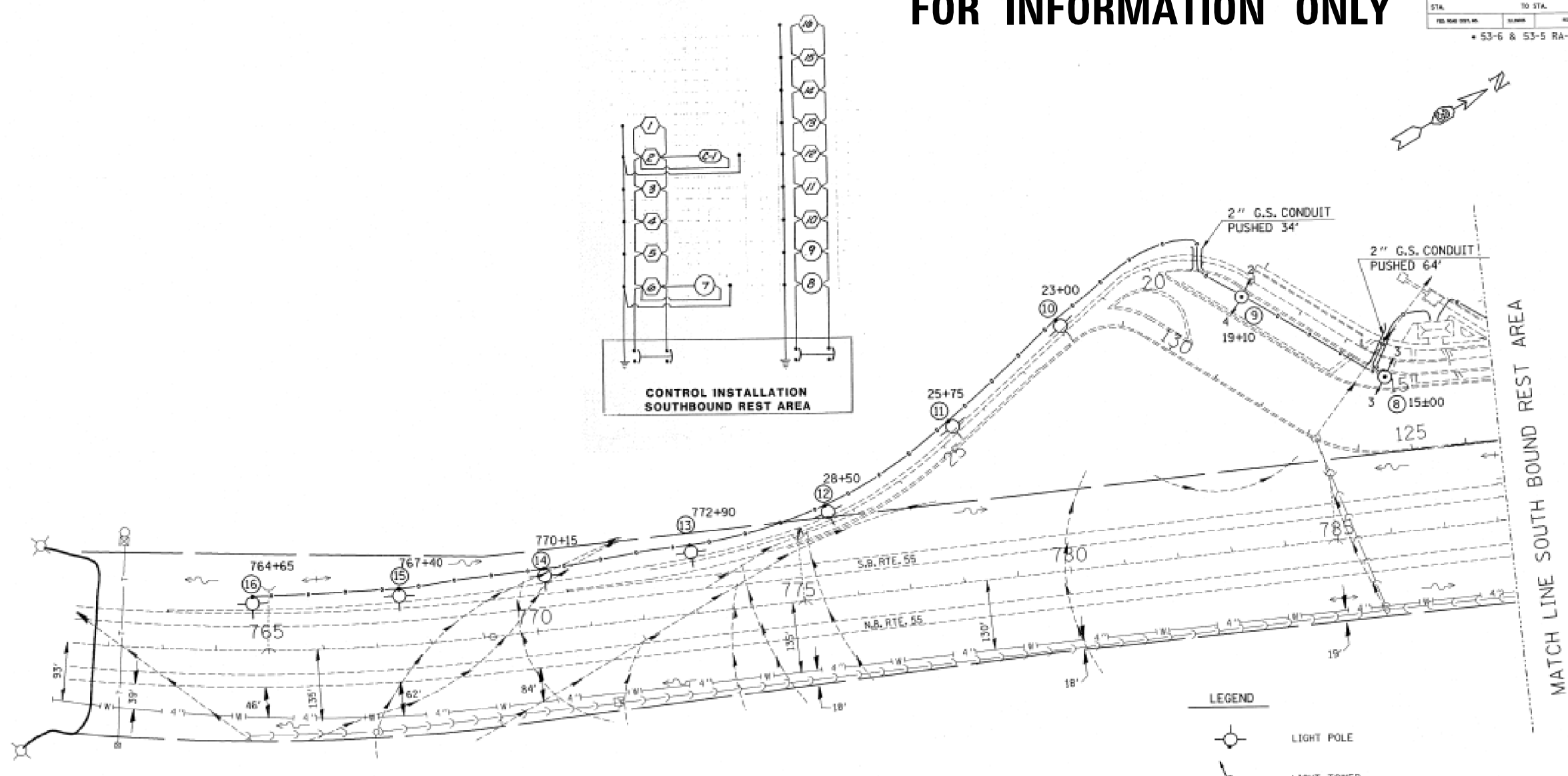
SCALE: SHEET OF SHEETS STA. TO STA.

F.A.I. RTE.	SECTION	COUNTY	TOTAL SHEETS	SHEET NO.
80&55	*	GRUNDY/LIV.	20	18
CONTRACT NO. 66E29				
ILLINOIS FED. AID PROJECT				

\*2015-1 TREE REMOVAL FOR EAB CONTROL

# FOR INFORMATION ONLY

FILE NO.	SECTION	COUNTY	TOTAL SHEETS	SHEET NO.
55	*	LEWISTON	22	6
STA.	TO STA.			
FED. AID DIST. NO.	PLAN	MILEAGE PROJECT		
+ 53-6 & 53-5 RA-L				



**LEGEND**

- LIGHT POLE
- LIGHT TOWER
- BURIED CABLE
- PUSHED CONDUIT
- CANTILEVER SIGN STRUCTURE
- EXIST. FIELD TILE

**NOTE:**  
HIGH MAST LIGHTS ARE SUBJECT TO MINOR LOCATION ADJUSTMENTS. TO BE DETERMINED BY THE ENGINEER.

LIGHTING CONTROL CABINETS TO BE LOCATED INSIDE MAIN REST AREA BUILDING.



REVISIONS	
NAME	DATE
LMT	12-22-88
LMT	1-3-89

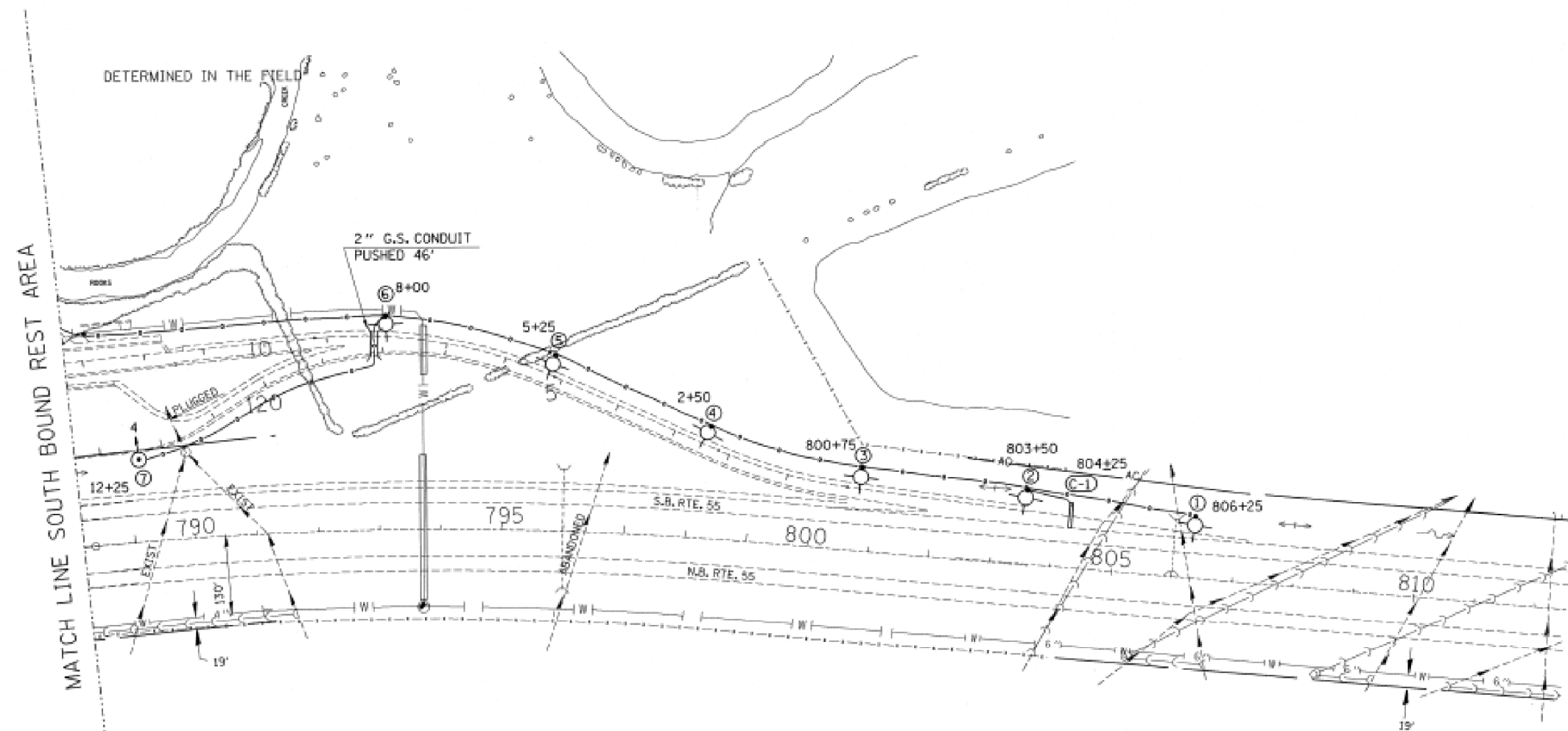
ILLINOIS DEPARTMENT OF TRANSPORTATION  
DRAWN BY C.A.D.D.  
**SOUTH BOUND REST AREA LIGHTING LOCATIONS**  
DRAWN BY L.M.T.  
DATE 12-30-88 CHECKED BY

9-JAN-89 11:47:46  
ZF:\M22\00323031698\LDONL

\*2015-1 TREE REMOVAL FOR EAB CONTROL

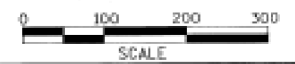
# FOR INFORMATION ONLY

FILE NO.	SECTION	COUNTY	TRAIL MILE	SHEET NO.
55	*	LIVINGSTON	22	7
STA. TO STA.				
* 53-6 & 53-5 RA-L				



LEGEND	
	LIGHT POLE
	LIGHT TOWER
	BURIED CABLE
	PUSHED CONDUIT
	CANTILEVER SIGN STRUCTURE
	EXIST. FIELD TILE

NOTE:  
HIGH MAST LIGHTS ARE SUBJECT TO MINOR LOCATION ADJUSTMENTS. TO BE DETERMINED BY THE ENGINEER.



REVISIONS	
NAME	DATE
LMT	1-3-89

ILLINOIS DEPARTMENT OF TRANSPORTATION  
DRAWN BY C.A.S.O.  
**SOUTH BOUND REST AREA LIGHTING LOCATIONS**  
DRAWN BY L.M.T.  
CHECKED BY  
DATE 12-30-88

FILE NAME =	USER NAME = Schwankerg	DESIGNED -	REVISED -
		DRAWN -	REVISED -
		CHECKED -	REVISED -
		DATE -	REVISED -

STATE OF ILLINOIS  
DEPARTMENT OF TRANSPORTATION

LIMESTONE SOUTHBOUND REST AREA	
SCALE:	SHEET OF SHEETS STA. TO STA.

F.A.I. RTE.	SECTION	COUNTY	TOTAL SHEETS	SHEET NO.
80&55	*	GRUNDY/LIV.	20	20
CONTRACT NO. 66E29				
ILLINOIS FED. AID PROJECT				

\*2015-1 TREE REMOVAL FOR EAB CONTROL