

STATE OF ILLINOIS
 DEPARTMENT OF TRANSPORTATION
 DIVISION OF HIGHWAYS

**PROPOSED
 HIGHWAY PLANS**

FAP ROUTE 669 (IL 29 /US 24)
 SECTION 11-1-5
 TAZEWELL COUNTY
 C-94-017-15

F.A.P. RTE.	SECTION	COUNTY	TOTAL SHEETS	SHEET NO.
669	11-1-5	TAZEWELL	6	1
ILLINOIS CONTRACT NO. 68C30				

D-94-011-15



FOR INDEX OF SHEETS, SEE SHEET NO. 2

HIGHWAY STANDARDS:

420001-07

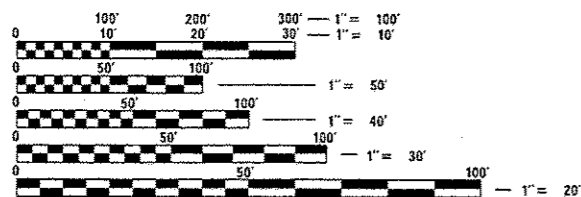
701422-06

ADT = 23,700 (2013)

%SU = 4.22

%MU = 3.16

FUNCTIONAL CLASSIFICATION:
 OTHER PRINCIPAL ARTERIAL

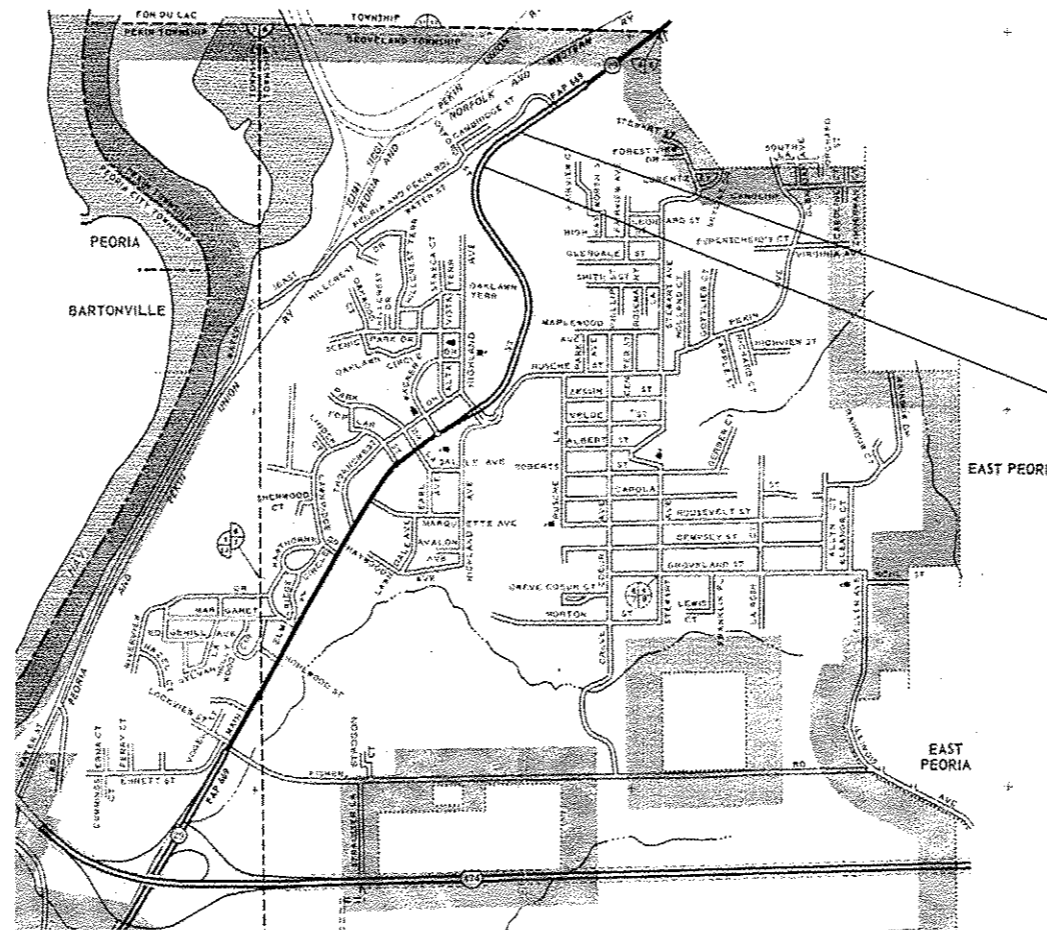


FULL SIZE PLANS HAVE BEEN PREPARED USING STANDARD ENGINEERING SCALES. REDUCED SIZED PLANS WILL NOT CONFORM TO STANDARD SCALES. IN MAKING MEASUREMENTS ON REDUCED PLANS, THE ABOVE SCALES MAY BE USED.

J.U.L.I.E.
 JOINT UTILITY LOCATION INFORMATION FOR EXCAVATION
 1-800-892-0123
 OR 811

PROJECT ENGINEER: RICH DOTSON
 PROJECT MANAGER: KEVIN HORST

CATALOG NO. 035084-00D
 CONTRACT NO. 68C30



IMPROVEMENT BEGINS
 STA. 98+00
 IMPROVEMENT ENDS
 STA. 101+20

GROSS LENGTH = 320 FT. = 0.06 MILE
 NET LENGTH = 320 FT. = 0.06 MILE

THE PROPOSED IMPROVEMENT CONSISTS OF CONSTRUCTING A GUTTER OUTLET ALONG IL 29/US 24 NB, SOUTH OF WESLEY ROAD IN CREVE COEUR.

STATE OF ILLINOIS
 DEPARTMENT OF TRANSPORTATION
 DIVISION OF HIGHWAYS

SUBMITTED August 19, 2014
[Signature]
 DEPUTY DIRECTOR OF HIGHWAYS, REGION ENGINEER

Oct 17, 2014
[Signature] PE
 acting ENGINEER OF DESIGN AND ENVIRONMENT

Oct 17, 2014
[Signature] PE
 DIRECTOR OF HIGHWAYS, CHIEF ENGINEER

PRINTED BY THE AUTHORITY
 OF THE STATE OF ILLINOIS