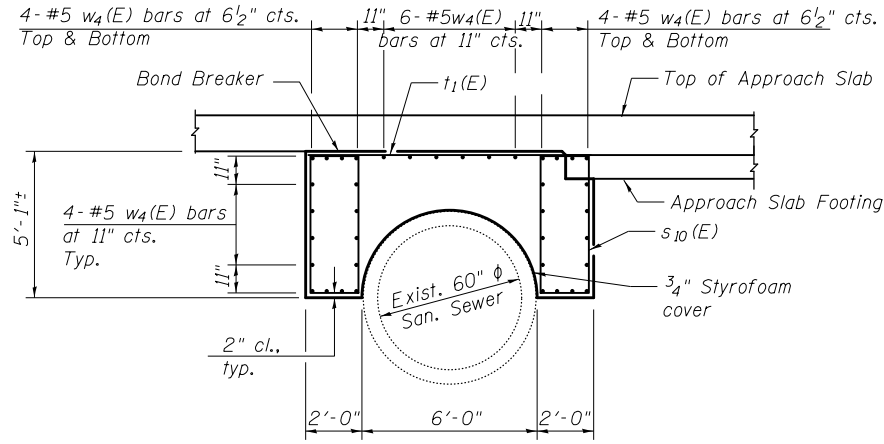
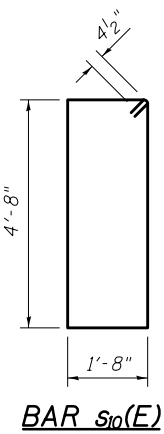


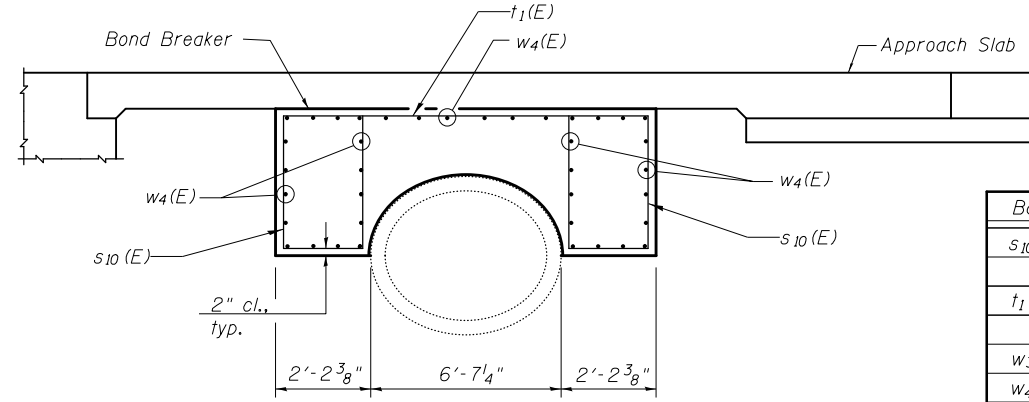
PLAN



SECTION C-C

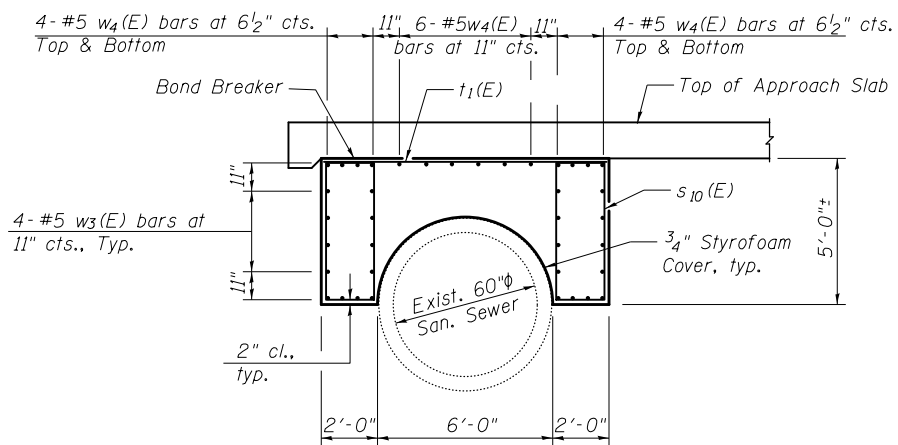


BAR s10(E)



SECTION B-B

Shown parallel to stage construction Line



SECTION A-A

BILL OF MATERIAL

Bar	No.	Size	Length	Shape
s ₁₀ (E)	86	#4	13'-5"	
t ₁ (E)	51	#5	9'-8"	—
w ₃ (E)	38	#5	19'-0"	—
w ₄ (E)	38	#5	24'-6"	—
Structure Excavation			Cu. Yd.	82.8
Concrete Structures (Special)			Cu. Yd.	59.9
Reinforcement Bars, Epoxy Coated			Pound	3,010
Temporary Sheet Piling			Sq. Ft.	890
Sanitary Sewer Television Inspection, Video Taping and Recording			Foot	430

NOTES

- Volume of pipe encasement below Bridge Approach Slab shall be paid for as Concrete Structures (Special).
- Contractor to field verify 60" Sanitary Sewer pipe location before starting construction. Notify engineer of any discrepancies.
- No heavy equipment shall be allowed on top of the 60" Sanitary Sewer during construction.
- The top of the 60" Sanitary Sewer encasement shall be poured such that it will not encroach upon the minimum 1'-3" thickness (after grinding) of the approach slab.
- Temporary Sheet Piling shall be driven as near to the 60" Sanitary Sewer encasement as feasible in order to minimize potential for undermining of the 60" Sanitary Sewer by flood waters and to minimize interference with the proposed abutment.



USER NAME = ceerlockjd	DESIGNED - VPT	REVISED
PLOT SCALE = 6.6667 ft / in.	CHECKED - THW	REVISED
PLOT DATE = 8/12/2014	DRAWN - THW	REVISED
	CHECKED - VPT	REVISED

STATE OF ILLINOIS
DEPARTMENT OF TRANSPORTATION

SANITARY SEWER ENCASEMENT - SOUTH APPROACH SLAB
STRUCTURE NO. 057-0256

SHEET NO. 12 OF 23 SHEETS

F.A.P. RTE. 730	SECTION 62-ZBR	COUNTY MCLEAN	TOTAL SHEETS 65	SHEET NO. 39
CONTRACT NO. 70540				
ILLINOIS FED. AID PROJECT				