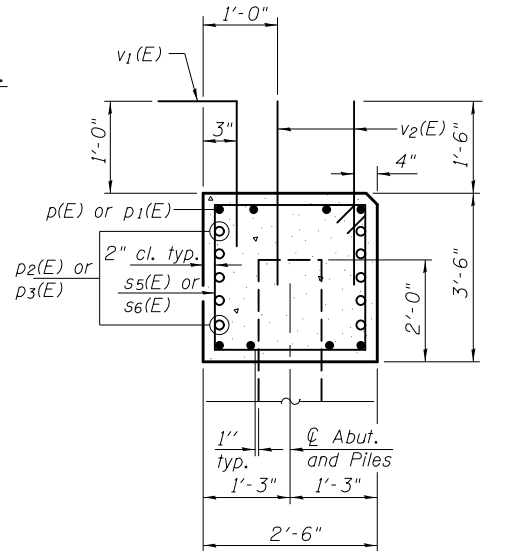
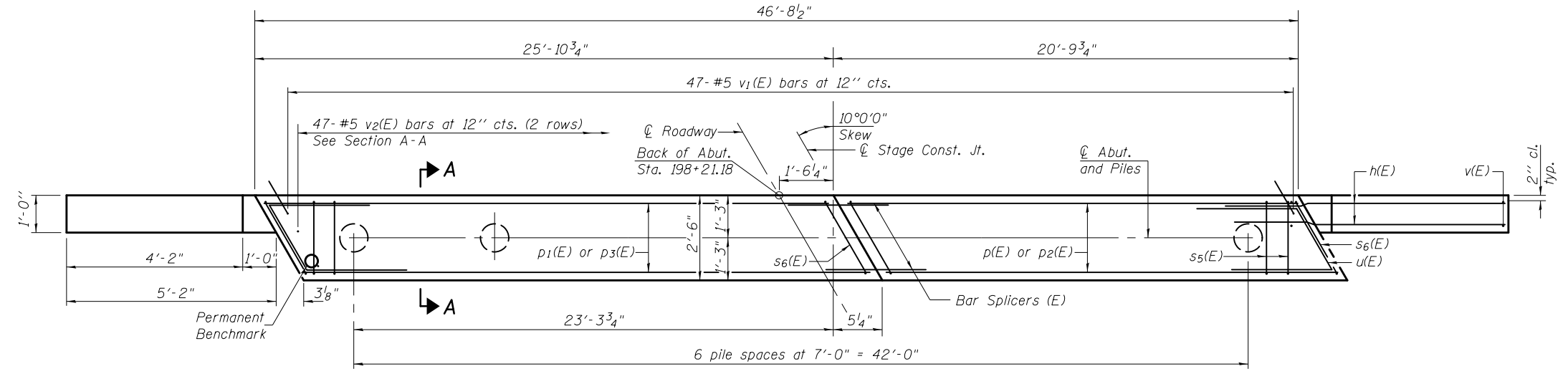


ELEVATION

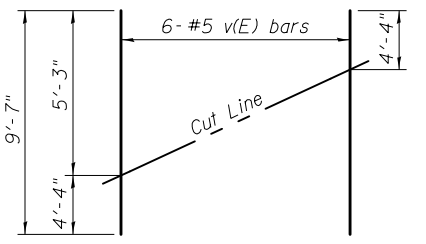


SECTION A-A
(Dimensions are at Rt. L's)

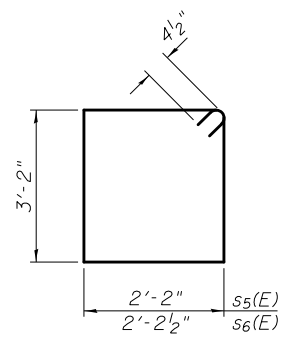


PLAN

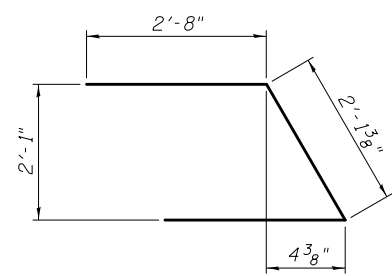
PILE DATA
 Type: Metal Shell - 14 in. Dia. x 0.25 in. Walls with Pile Shoes
 Nominal Required Bearing: 283 kips
 Factored Resistance Available: 155 kips
 Est. Length: 37 ft.
 No. Production Piles: 6
 No. Test Piles: 1



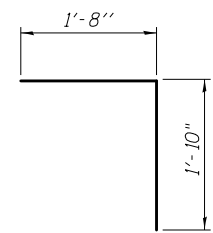
FIELD CUTTING DIAGRAM
 Order v(E) full length. Cut as shown and use remainder of bars in opposite face.



BARS s5(E) & s6(E)



BAR u(E)



BAR v1(E)

BILL OF MATERIAL

Bar	No.	Size	Length	Shape
h(E)	28	#5	7'-4"	—
p(E)	8	#7	20'-6"	—
p1(E)	8	#7	25'-7"	—
p2(E)	10	#4	20'-6"	—
p3(E)	10	#4	25'-7"	—
s5(E)	47	#4	11'-5"	□
s6(E)	4	#4	11'-6"	□
u(E)	10	#6	7'-6"	⌒
v(E)	12	#5	9'-7"	—
v1(E)	47	#5	3'-6"	└
v2(E)	94	#5	3'-0"	—
Structure Excavation		Cu. Yd.	92	
Concrete Structures		Cu. Yd.	16.5	
Reinforcement Bars, Epoxy Coated		Pound	2,360	
Furnishing Metal Shell Piles, 14" x 0.25"		Foot	222	
Driving Piles		Foot	222	
Test Pile Metal Shell		Each	1	
Pile Shoes		Each	7	

For details of piles, see sheet 20 of 23.
 Piles shall be driven through 18 in. diameter precored holes extending to elevation 746.0 according to Article 512.09(c) of the Standard Specifications. Cost included in driving piles.



USER NAME = ceerlockjd	DESIGNED - VPT	REVISED
PLOT SCALE = 0.1667' / in.	CHECKED - JAF	REVISED
PLOT DATE = 8/12/2014	DRAWN - JAF	REVISED
	CHECKED - VPT	REVISED

STATE OF ILLINOIS
 DEPARTMENT OF TRANSPORTATION

SOUTH ABUTMENT
 STRUCTURE NO. 057-0256

SHEET NO. 18 OF 23 SHEETS

F.A.P. RTE.	SECTION	COUNTY	TOTAL SHEETS	SHEET NO.
730	62-ZBR	MCLEAN	65	45
CONTRACT NO. 70540				
ILLINOIS FED. AID PROJECT				