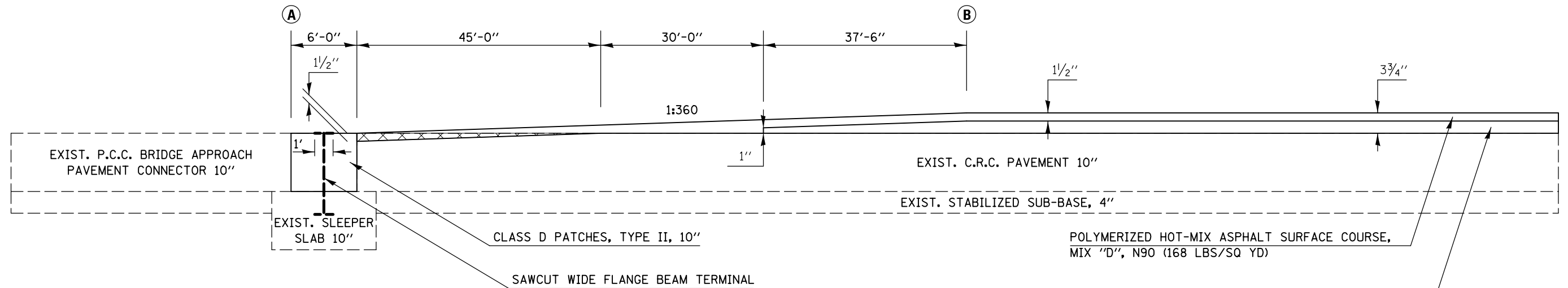


DETAIL FOR I-39 BUTT JOINTS AND PAVING TRANSITIONS

	(A) <u>STATION</u> SOUTHBOUND <u>TO</u>	(B) <u>STATION</u> (BK)		(A) <u>STATION</u> NORTHBOUND <u>TO</u>	(B) <u>STATION</u>
APPROACH SN 057-0208	306+14.00	306+35.80		APPROACH SN 057-0206	341+34.00
DEPARTURE SN 057-0205	305+66.49 (AH)	306+63.19		DEPARTURE SN 057-0206	345+53.00
APPROACH SN 057-0205	341+13.00	339+94.50		APPROACH SN 057-0203	549+61.00
DEPARTURE SN 057-0203	345+41.00	346+59.50			340+15.50
	550+04.00	548+85.50			346+71.50
					548+42.50

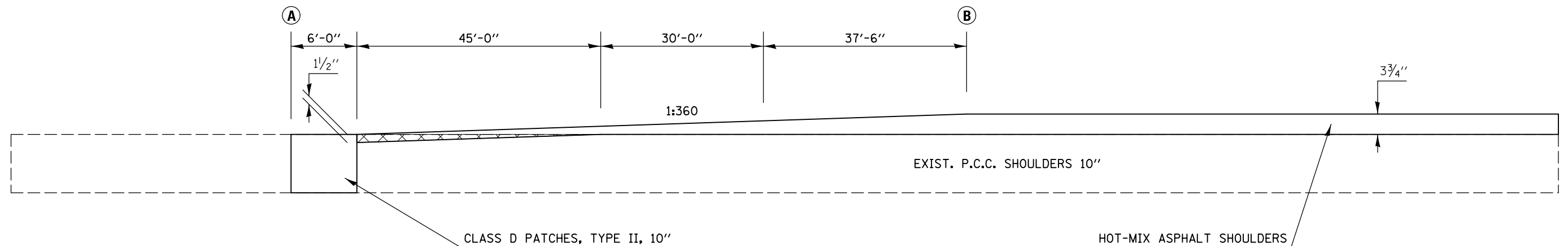


PORTLAND CEMENT CONCRETE SURFACE REMOVAL - BUTT JOINT

NOTE: REMOVAL OF EXISTING WIDE FLANGE BEAM TERMINAL AT TOP OF SLEEPER SLAB SHALL BE INCLUDED IN THE COST OF CLASS D PATCHES

DETAIL FOR I-39 SHOULDER BUTT JOINTS AND PAVING TRANSITIONS

	(A) <u>STATION</u> SOUTHBOUND <u>TO</u>	(B) <u>STATION</u> (BK)		(A) <u>STATION</u> NORTHBOUND <u>TO</u>	(B) <u>STATION</u>
APPROACH SN 057-0208	306+14.00	306+35.80		APPROACH SN 057-0206	341+34.00
DEPARTURE SN 057-0205	305+66.49 (AH)	306+63.19		DEPARTURE SN 057-0206	345+53.00
APPROACH SN 057-0205	341+13.00	339+94.50		APPROACH SN 057-0203	549+61.00
DEPARTURE SN 057-0203	345+41.00	346+59.50			340+15.50
	550+04.00	548+85.50			346+71.50
					548+42.50



PORTLAND CEMENT CONCRETE SURFACE REMOVAL - BUTT JOINT