

F.A.U. R.T.C.	SECTION	COUNTY	TOTAL SHEETS	SHEET NO.
8136	A	MACOUPIN	92	1
		ILLINOIS	CONTRACT NO. 72B43	

Δ (4) RS-1, I, CR
 * 92 + 2 = 94 TOTAL SHEETS
 D-96-122-07

STATE OF ILLINOIS
 DEPARTMENT OF TRANSPORTATION
 DIVISION OF HIGHWAYS

**PROPOSED
 HIGHWAY PLANS**

FAU ROUTE 8136 (MAIN ST.)
 SECTION: (4) RS-1, I, CR
 PROJECT ACHPP - 8136 (002)
 3P RESURFACING
 MACOUPIN COUNTY

C-96-122-07

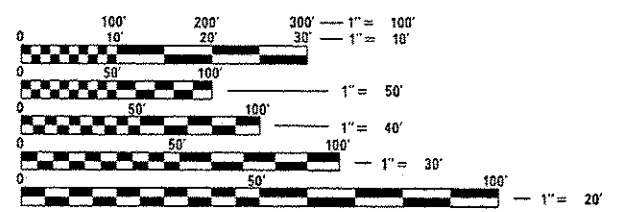
INDEX OF SHEETS

- 1 COVER SHEET
- 2 GENERAL NOTES
- 3-7 SUMMARY OF QUANTITIES
- 8-10 SCHEDULE OF QUANTITIES
- 11 TYPICAL SECTIONS
- 12 ALIGNMENT CROSS TIES
- 13-20 PLAN AND PROFILE SHEETS
- 21 RESERVOIR RD. INTERSECTION DETAIL
- 22-30 DETAILS
- * 31-89 CROSS SECTIONS (MAIN ST.)
- 90-92 CROSS SECTIONS (RESERVOIR RD.)

* INCLUDES SHEETS 31A AND 31B.

STANDARDS

000001-06	701301-04	542301-03
280001-07	701306-03	602401-03
424026-01	701311-03	602601-03
442201-03	701501-06	604001-03
542011	701801-05	
602301-04	701901-03	
604036-02	780001-04	
701006-05	781001-03	
701011-04	BLR21-9	
701201-04	BLR22-7	

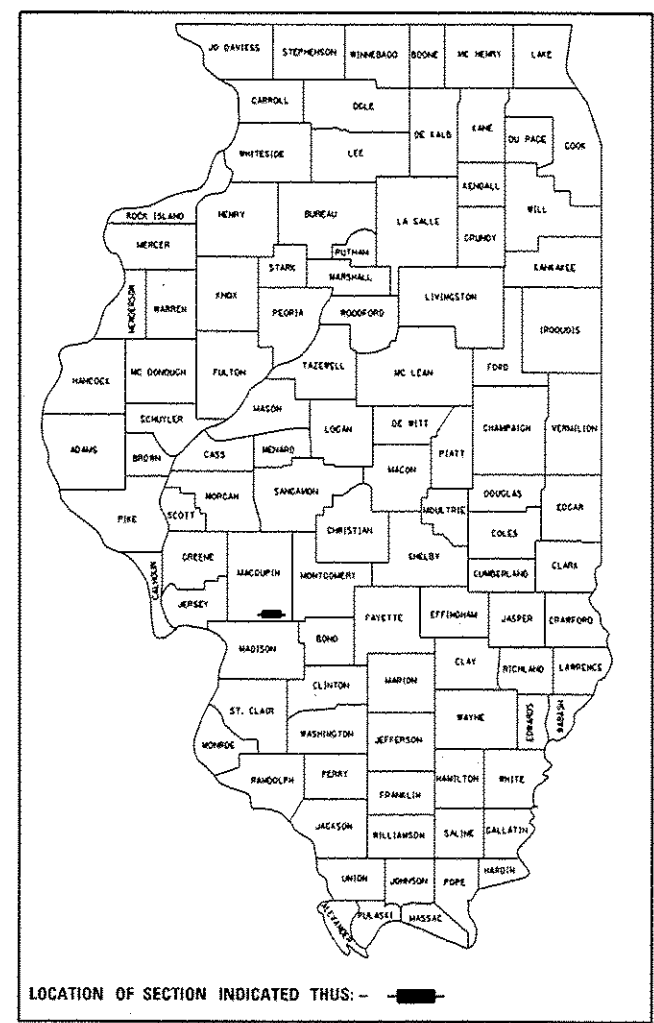


FULL SIZE PLANS HAVE BEEN PREPARED USING STANDARD ENGINEERING SCALES. REDUCED SIZED PLANS WILL NOT CONFORM TO STANDARD SCALES. IN MAKING MEASUREMENTS ON REDUCED PLANS, THE ABOVE SCALES MAY BE USED.

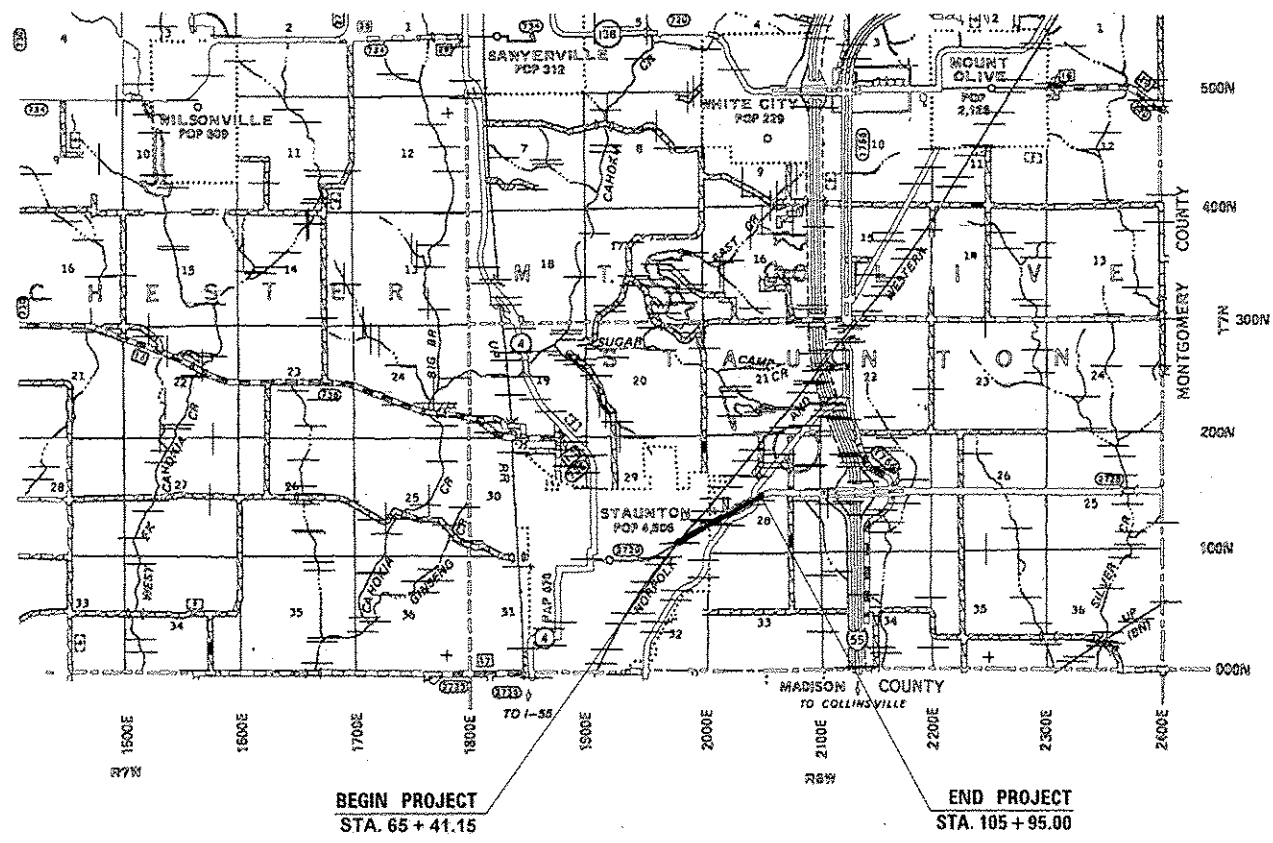
J.U.L.I.E.
 JOINT UTILITY LOCATION INFORMATION FOR EXCAVATION
 1-800-892-0123
 OR 811

PROJECT ENGINEER: SAL MADONIA (217) 782-4760
 PROJECT MANAGER: JARED MARTIN (217) 524-0064

CONTRACT NO. 72B43



LOCATION OF SECTION INDICATED THUS: -



LOCATION MAP

GROSS LENGTH = 4053.85 FT. = 0.768 MILES
 NET LENGTH = 4053.85 FT. = 0.768 MILES

TRAFFIC COUNT

ADT = 3,700 (2012)
 PV = 3,485 (94.19%)
 SU = 175 (4.73%)
 MU = 40 (1.08%)

STATE OF ILLINOIS
 DEPARTMENT OF TRANSPORTATION
 DIVISION OF HIGHWAYS

SUBMITTED August 21 20 14
 Reg. 2 Smith
 DEPUTY DIRECTOR OF HIGHWAYS, REGION ENGINEER

Oct 17 20 14
 John D. Baranzelli, P.E.
 acting ENGINEER OF DESIGN AND ENVIRONMENT

Oct 17 20 14
 Omer Osman, P.E.
 DIRECTOR OF HIGHWAYS, CHIEF ENGINEER

**PRINTED BY THE AUTHORITY
 OF THE STATE OF ILLINOIS**