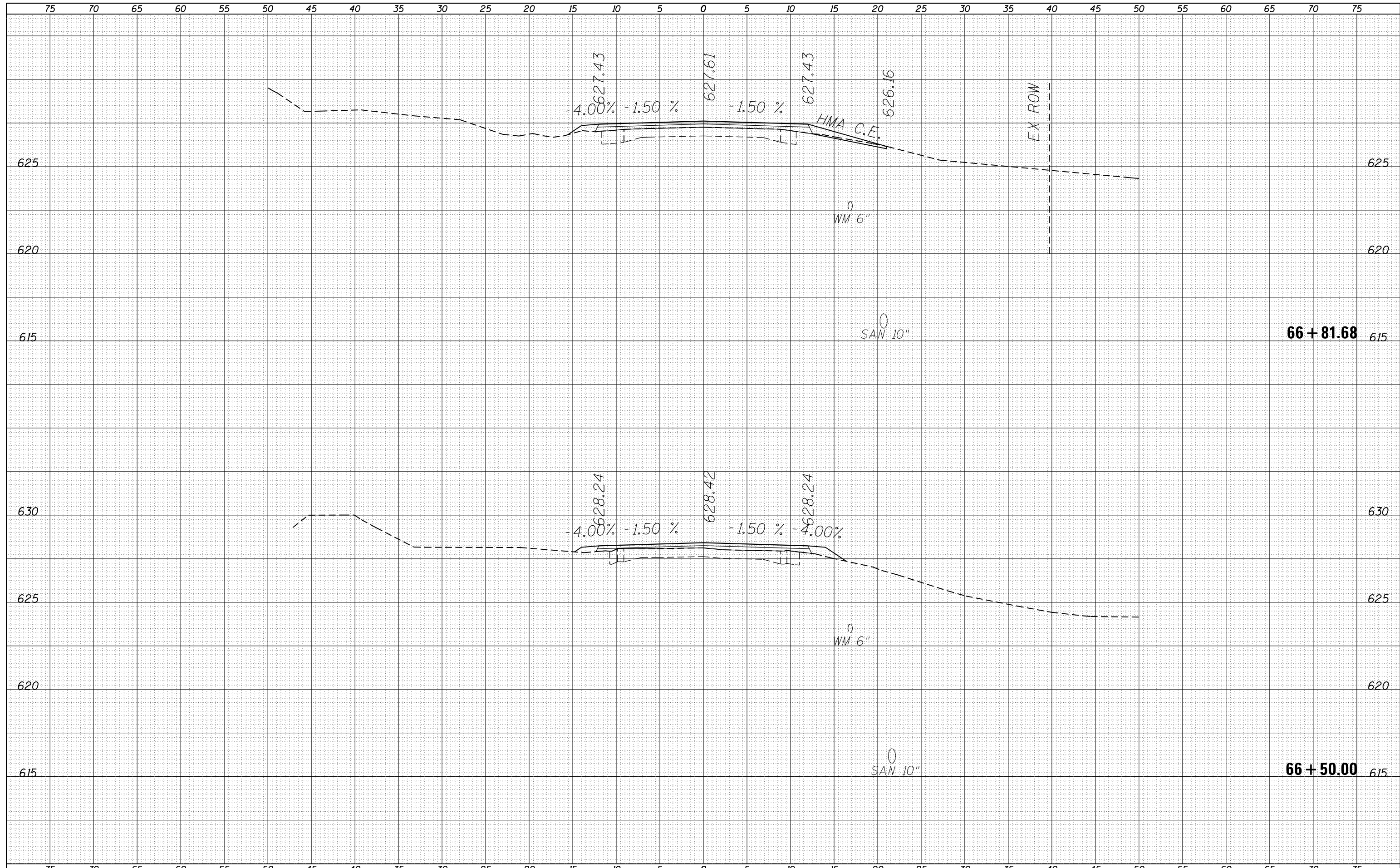


DATE	
BY	
FINAL SURVEY	SURVEYED
NOTE BOOK	PLOTTED
NO.	TEMPLATE
	AREAS
	CHECKED

DATE	
BY	
ORIGINAL SURVEY	SURVEYED
NOTE BOOK	PLOTTED
NO.	TEMPLATE
	AREAS
	CHECKED



FILE NAME =	USER NAME = martinjk	DESIGNED -	REVISIED -	STATE OF ILLINOIS DEPARTMENT OF TRANSPORTATION	MAIN ST. CROSS SECTIONS FAU 8136 (MAIN ST.)			F.A.U. RTE.	SECTION	COUNTY	TOTAL SHEETS	SHEET NO.
Default	Plot Scale = 10.0000' / in.	CHECKED -	REVISIED -					8136	(4) RS-1,1,CR	MACOUPIN	92	31A
	PLOT DATE = Oct-02-2014 03:56:59PM	DATE -	REVISIED -		SCALE:	SHEET 1	OF 62 SHEETS	STA. 66+50.00	TO STA. 66+81.68	CONTRACT NO. 72B43		
					ILLINOIS FED. AID PROJECT							