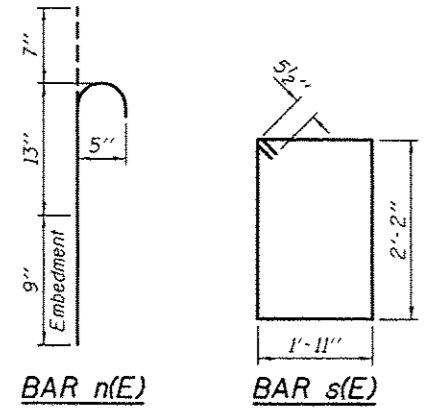


Symmetrical about C Pier

SECTION B-B

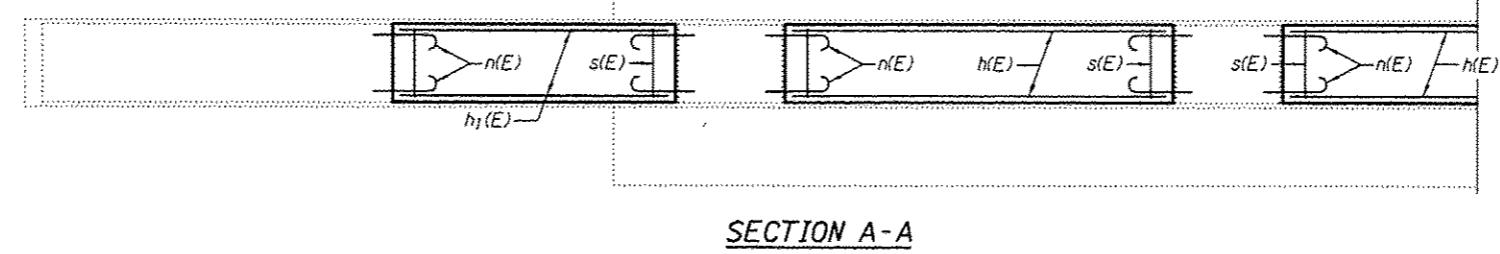
ELEVATION

SECTION C-C



BAR n(E)

BAR s(E)



SECTION A-A

* Epoxy grout n(E) bars in 9" min. holes according to Article 584 of the Standard Specifications.

**BILL OF MATERIAL
2 PIERS**

Bar	No.	Size	Length	Shape
h(E)	42	#5	10'-6"	—
h ₁ (E)	28	#5	7'-5"	—
n(E)	256	#5	2'-5"	⊔
s(E)	98	#5	9'-1"	□
Concrete Structures			Cu. Yd.	20.4
Reinforcement Bars, Epoxy Coated			Pound	2250