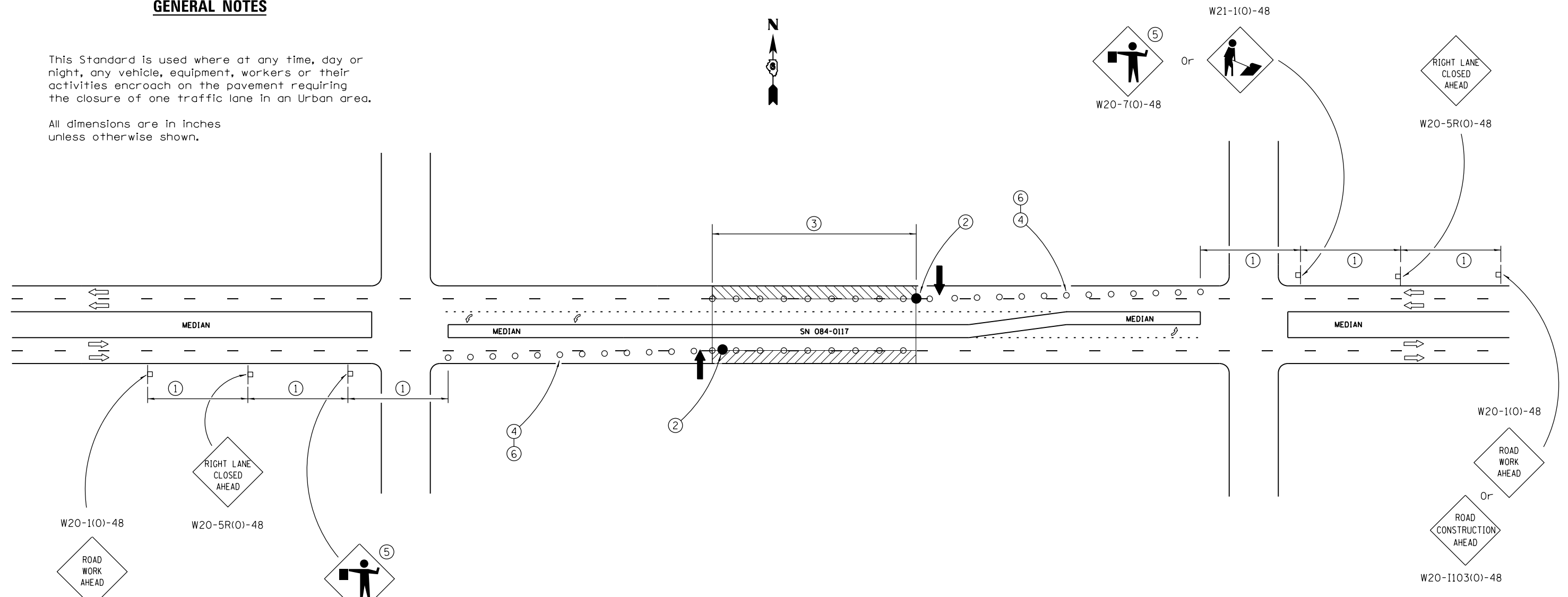







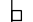
GENERAL NOTES

This Standard is used where at any time, day or night, any vehicle, equipment, workers or their activities encroach on the pavement requiring the closure of one traffic lane in an Urban area.

All dimensions are in inches unless otherwise shown.

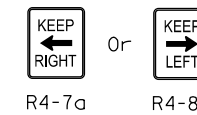


SYMBOLS

-  Arrow board
-  Work area
-  Barricade or drum with steady burning monidirectional light
-  Flagger with traffic control sign
-  Cone, drum or barricade (Cones for daytime use only)
-  Sign on portable or permanent support

- ① Refer to SIGN SPACING TABLE for distances.
- ② Required for speeds > 40 mph.
- ③ Cones at 25' centers. When drums or type I or II barricades are used, the interval between devices may be doubled.
- ④ Cones, drums or barricades at 20' centers in taper.
- ⑤ Use flagger sign only when flagger is present.
- ⑥ Use appropriate sign (R4-7a OR R4-8a) in taper.

SIGN SPACING	
Posted Speed	Sign Spacing
55	500' (150 m)
50-45	350' (100 m)
<45	200' (60 m)



FILE NAME =	USER NAME = sparksgw	DESIGNED -	REVISED -
Default	Default	DRAWN -	REVISED -
	PLOT SCALE = 5000.0000' / in.	CHECKED -	REVISED -
	PLOT DATE = Aug-15-2014 10:52:18AM	DATE -	REVISED -

**STATE OF ILLINOIS
DEPARTMENT OF TRANSPORTATION**

STANDARD 701602 SPECIAL (STAGE 1)			
TORONTO RD. TRAFFIC CONTROL			
SCALE:	SHEET	OF SHEETS	STA. TO STA.

F.A.I. RTE.	SECTION	COUNTY	TOTAL SHEETS	SHEET NO.
55	(84-4-1)RS-5	SANGAMON	39	30
CONTRACT NO. 72G47				
ILLINOIS FED. AID PROJECT				