

F.A. RTE.	SECTION	COUNTY	TOTAL SHEETS	SHEET NO.
VAR.	D6 BDGE PAINTING 2015-1	VARIOUS	58	1
		ILLINOIS	CONTRACT NO. 72H37	

STATE OF ILLINOIS  
DEPARTMENT OF TRANSPORTATION  
DIVISION OF HIGHWAYS

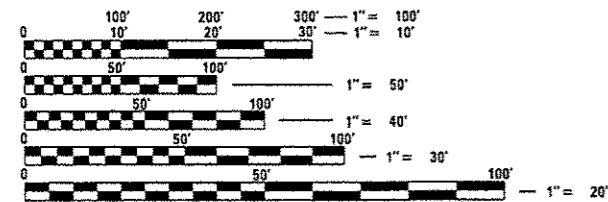
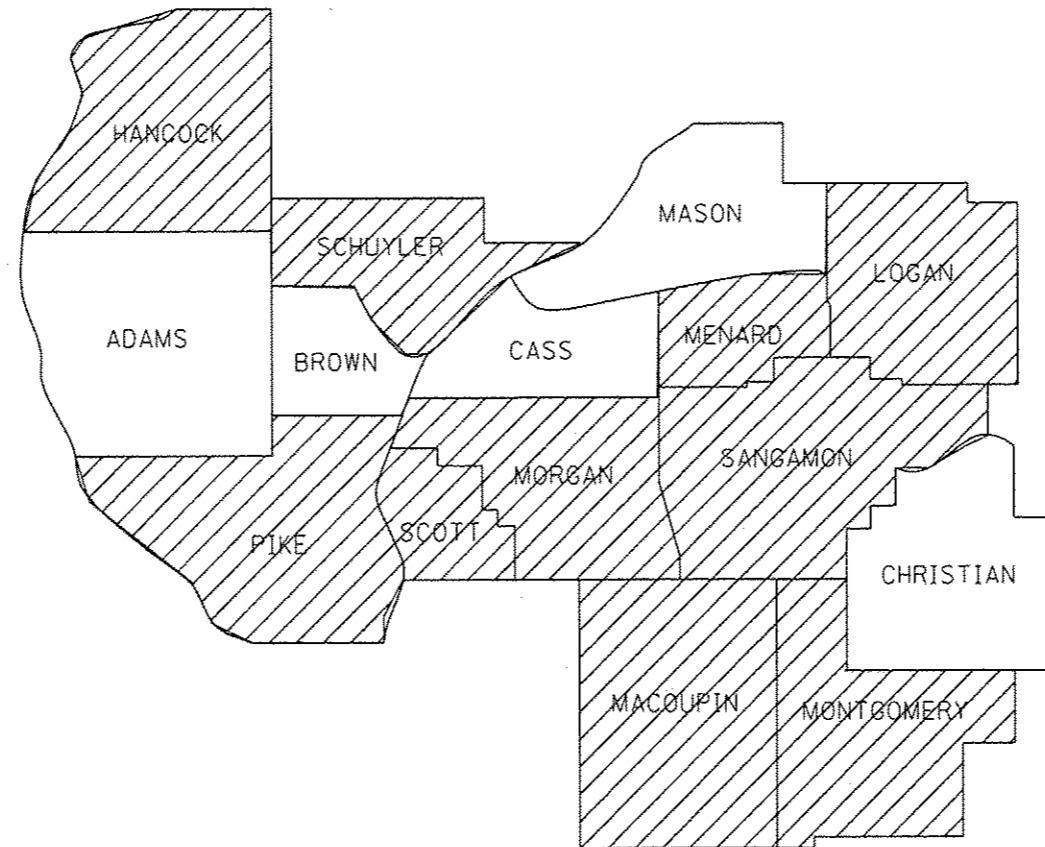
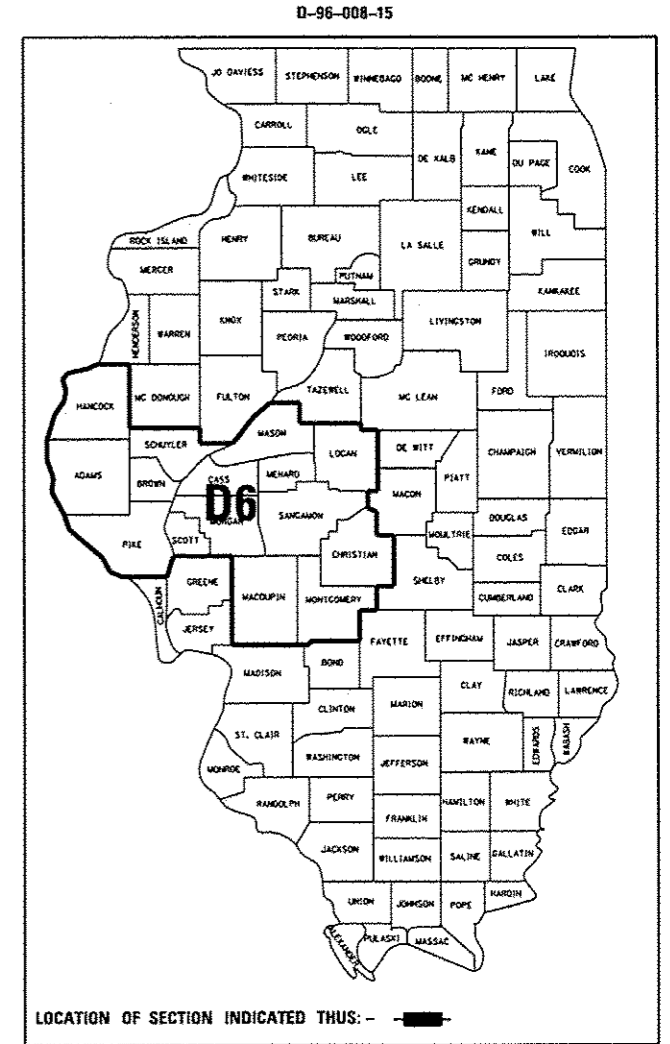
**PROPOSED  
CONTRACT MAINTENANCE**

VARIOUS ROUTES  
SECTION D6 BDGE PAINTING 2015-1

BRIDGE PAINTING  
VARIOUS COUNTIES

C-96-008-15

FOR INDEX OF SHEETS, SEE SHEET NO. 2



FULL SIZE PLANS HAVE BEEN PREPARED USING STANDARD ENGINEERING SCALES. REDUCED SIZED PLANS WILL NOT CONFORM TO STANDARD SCALES. IN MAKING MEASUREMENTS ON REDUCED PLANS, THE ABOVE SCALES MAY BE USED.

J.U.L.I.E.  
JOINT UTILITY LOCATION INFORMATION FOR EXCAVATION  
1-800-892-0123  
OR 811

BRIDGE MAINTENANCE ENGINEER - BRANDON DUDLEY (217) 785-9290  
BRIDGE INSPECTION ENGINEER - DAVE COPENBARGER (217) 785-5306

GROSS LENGTH = NA  
NET LENGTH = NA

CONTRACT NO. 72H37

STATE OF ILLINOIS  
DEPARTMENT OF TRANSPORTATION  
DIVISION OF HIGHWAYS

SUBMITTED August 21 20 14  
Reg. 2/2/14  
DEPUTY DIRECTOR OF HIGHWAYS, REGION ENGINEER

Oct 17 20 14  
John D. Baranzelli, P.E.  
ENGINEER OF DESIGN AND ENVIRONMENT

Oct 17 20 14  
Chris Corman, P.E.  
DIRECTOR OF HIGHWAYS, CHIEF ENGINEER

**PRINTED BY THE AUTHORITY  
OF THE STATE OF ILLINOIS**