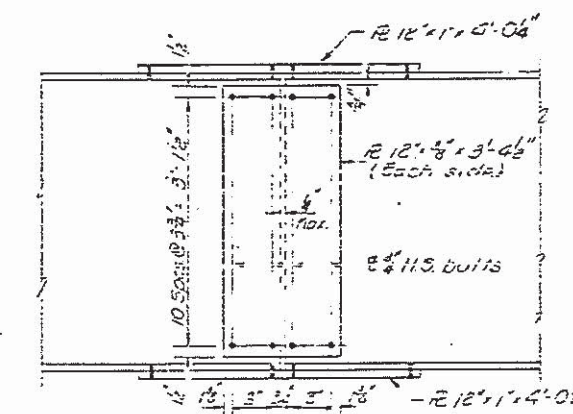
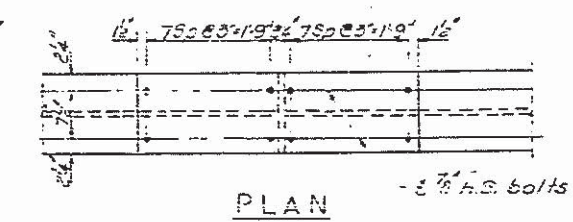
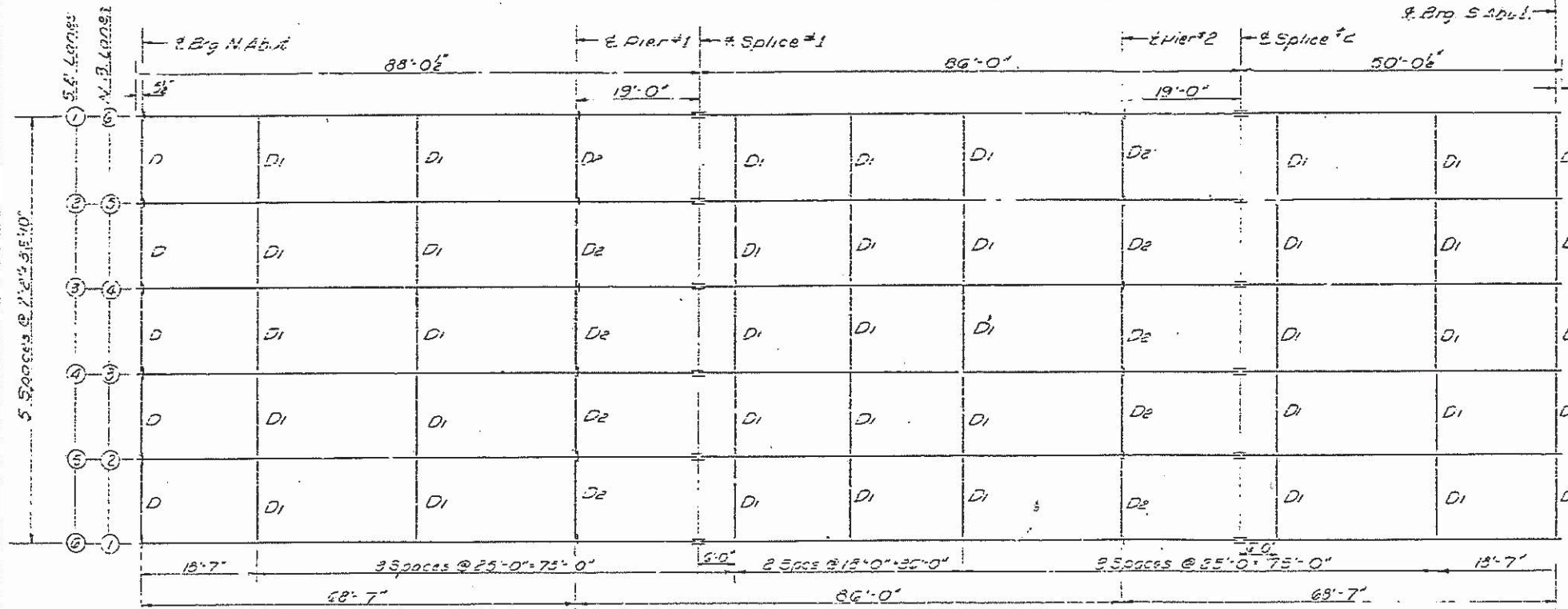
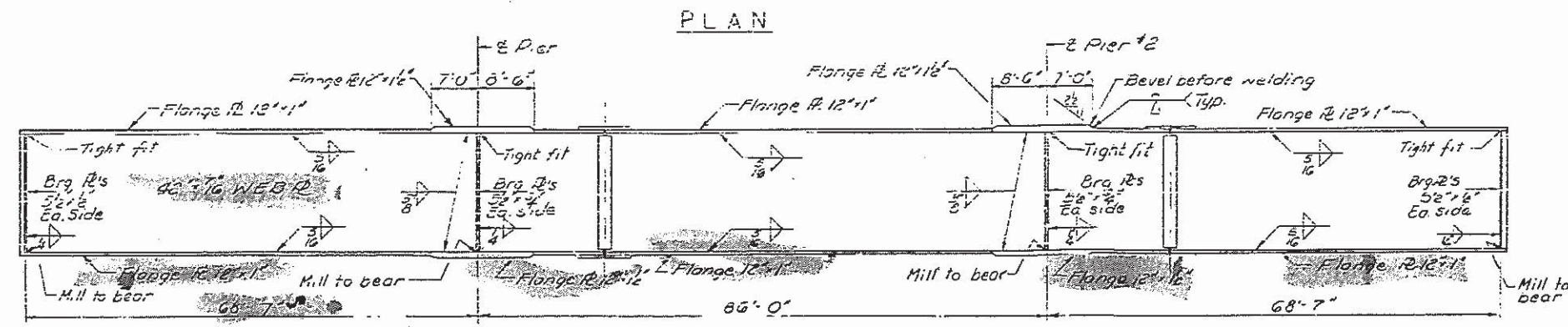


STATE OF ILLINOIS
DEPARTMENT OF PUBLIC WORKS & BUILDINGS
DIVISION OF HIGHWAYS

DATE	BY	CHKD	APPD	SHEET NO.
06/25/10	7
TOTAL SHEETS				15



DETAIL OF FIELD SPICES



ELEVATION

INTERIOR GIRDER MOMENTS

	4 Sp. for 3 Piers	1 Pier for 4 Sp.
I in ⁴	13800	15789
D.L. K/ft	123	123
M.D.L. K	3729	77829
M.L.L. K	50878	48457
Imp. K	12516	11280
M Total K	101123	138204
TS psi	19340	18910

INTERIOR GIRDER REACTIONS

	Abut.	Pier
D.L. K	3094	10564
L.L. K	3170	4514
Imp. K	780	1110
Total K	6999	16188

TOP OF WEB ELEVATIONS
(For fabrication only)

GIRDER LOCATION	NORTH BOUND LANE						SOUTH BOUND LANE					
	1	2	3	4	5	6	1	2	3	4	5	6
E. Brg. N. Abut.	701.19	701.32	701.43	701.37	701.25	701.10	700.78	701.91	701.02	700.99	700.84	700.69
E. Pier #1	701.32	701.45	701.56	701.50	701.38	701.23	701.04	701.17	701.28	701.22	701.10	700.95
E. Splice #1	701.36	701.49	701.60	701.54	701.42	701.27	701.11	701.24	701.35	701.29	701.17	701.02
E. Pier #2	701.41	701.54	701.65	701.59	701.47	701.32	701.29	701.42	701.53	701.47	701.35	701.20
E. Splice #2	701.43	701.56	701.67	701.61	701.49	701.34	701.34	701.47	701.58	701.52	701.40	701.25
E. Brg. S. Abut.	701.47	701.60	701.71	701.65	701.53	701.38	701.47	701.60	701.71	701.65	701.53	701.38

DESIGNED	<i>[Signature]</i>	EXAMINED	<i>[Signature]</i>
CHECKED	<i>[Signature]</i>	PASSED	<i>[Signature]</i>
DRAWN	<i>[Signature]</i>	APPROVED	<i>[Signature]</i>
CHECKED	<i>[Signature]</i>		

STRUCTURAL STEEL
FAI-RT. 5.5 SEC. 68-1VB-1
MONTGOMERY COUNTY
STA. 03+57.57