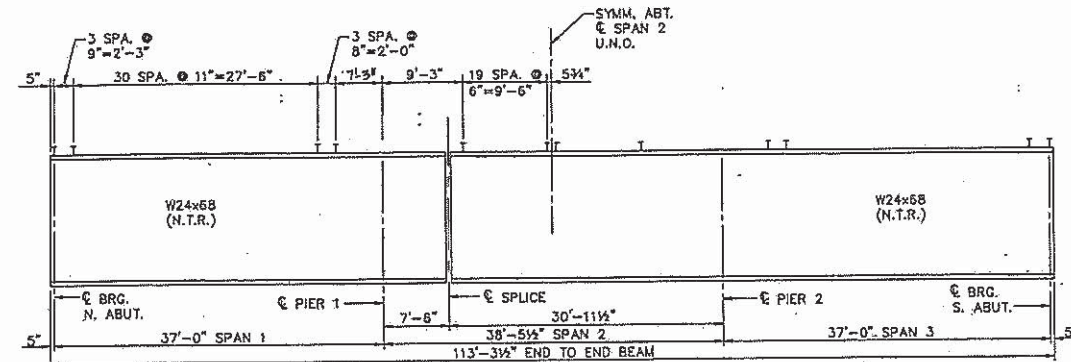
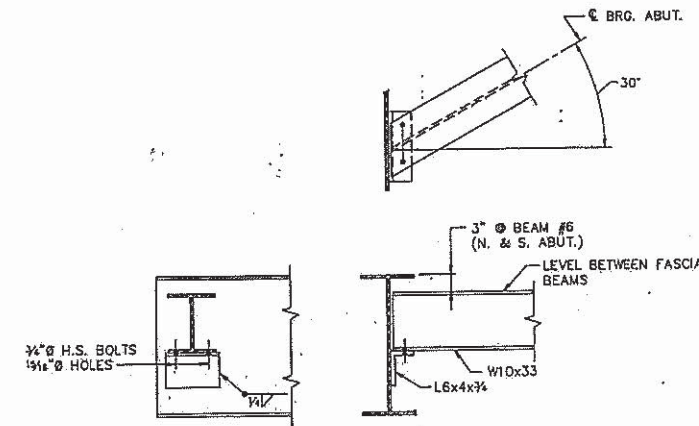


STATE OF ILLINOIS
DEPARTMENT OF TRANSPORTATION

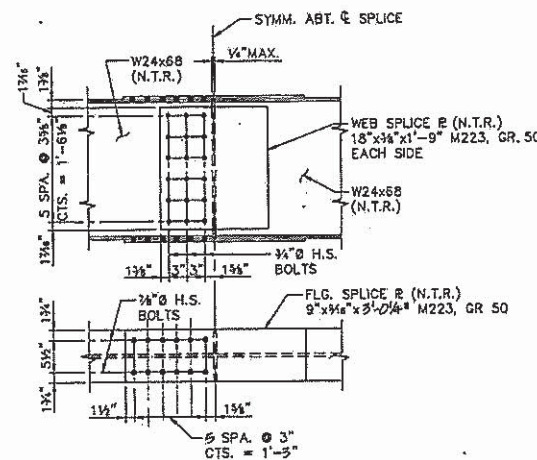
ROUTE NO.	SEC.	COUNTY	TOTAL SHEETS	SHEET NO.
FA-608	125BR	MACOUPH	33	14
SHEET NO. 8 SHEETS: 17				



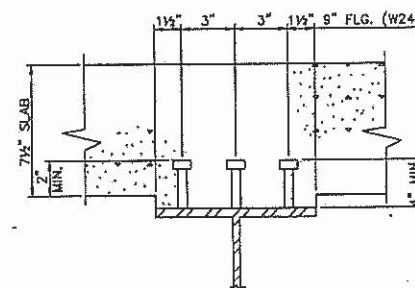
BEAM ELEVATION



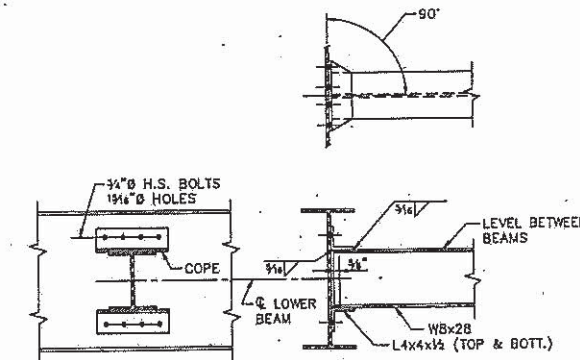
END DIAPHRAGM D



FIELD SPLICE DETAIL



TYPICAL SHEAR
STUD DETAIL



INTERIOR DIAPHRAGM D1

- NOTES:
1. BEAMS AND SPLICE MATERIAL SHALL BE M223. (GRD. 50)
 2. ALL STUDS TO BE 3/4" GRANULAR OR SOLID FLUX FILLED HEADED STUDS AUTOMATICALLY END WELDED TO FLANGE. (NO. REQ'D = 2052)
 3. USE TWO HARDENED WASHERS PER BOLT FOR ALL OVERSIZED HOLES IN DIAPHRAGM CONNECTIONS.
 4. "NTR" - NOTCH TOUGHNESS REQUIREMENT.
 5. PROVIDE 1 1/4" HOLES FOR ALL 3/4" BOLTS AND 1 1/4" HOLES FOR ALL 1/2" BOLTS. (UNLESS NOTED OTHERWISE)

BEAM DETAILS
ILLINOIS ROUTE 111 OVER
BEAR CREEK
F.A. RTE.608 SECTION 125BR
MACOUPH COUNTY
STATION 1005 + 80.00
STRUCTURE NO. 059-0014

REVISED BY HLC 9-16-01

FILE NAME	USER NAME	DESIGNED	REVISED	STATE OF ILLINOIS DEPARTMENT OF TRANSPORTATION	EXISTING PLANS SN 059-0014 (FOR INFORMATION ONLY)	F.A. RTE.	SECTION	COUNTY	TOTAL SHEETS	SHEET NO.
D:\OPERATIONS\Bridgplans\CAD\72H37 - beam end point FY15 CH\plansheet.dgn	audleybm	_____	_____			VAR.	D6 BDGE PAINTING 2015-1	VARIOUS	58	25
Default	PLGT DATE = Aug-29-2014 01:43:01PM	DATE	REVISED		SCALE: _____ SHEET _____ OF _____ SHEETS STA. _____ TO STA. _____	ILLINOIS FED. AID PROJECT				