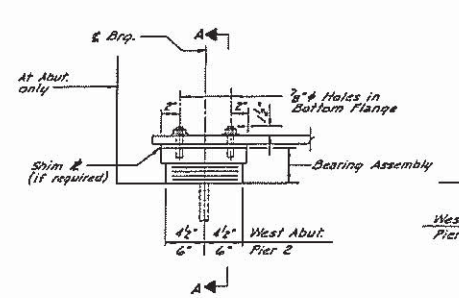
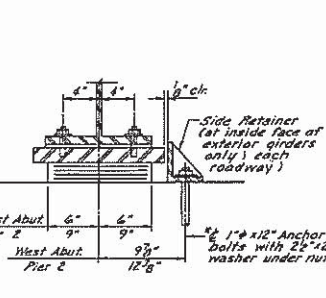


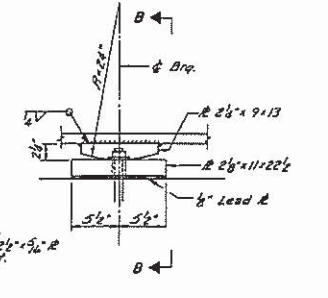
ROUTE NO.	SECTION	COUNTY	TOTAL SHEETS	SHEET NO.
FA. 53	23 BR	HANCOCK	87	50
FED. ROAD DIST. NO. 7	ILLINOIS	FEDERAL AID PROJECT NO.		



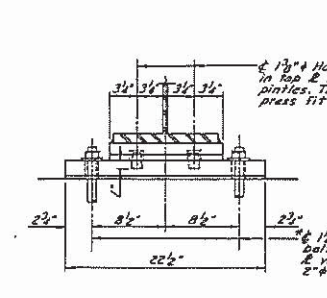
ELEVATION AT WEST ABUT. OR PIER 2



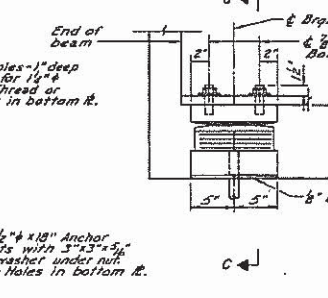
SECTION A-A



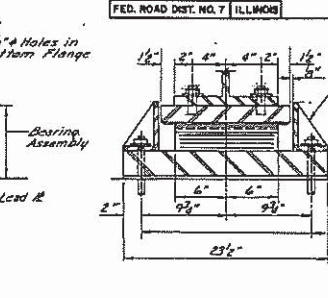
ELEVATION AT PIER 1



SECTION B-B



ELEVATION AT EAST ABUT.



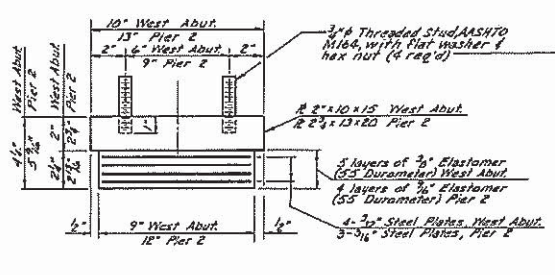
SECTION C-C

TYPE I ELASTOMERIC EXP. BRG.
(West Abut. and Pier 2)

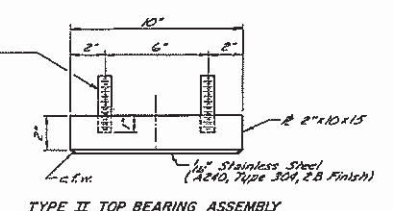
FIXED BEARING
(Pier 1)

TYPE II TFE ELASTOMERIC EXP. BRG.
(East Abut.)

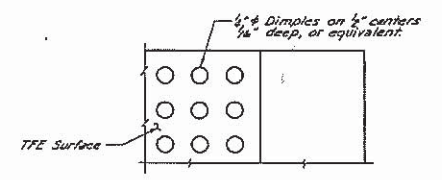
*Note: After beams have been erected, holes at expansion bearings shall be drilled and anchor bolts grouted in place. Anchor bolts at fixed bearings may be built into the masonry.



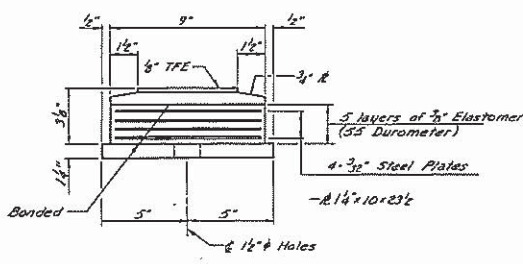
TYPE I BEARING ASSEMBLY
Note: Shim plates shall not be placed under Bearing Assembly



TYPE II TOP BEARING ASSEMBLY

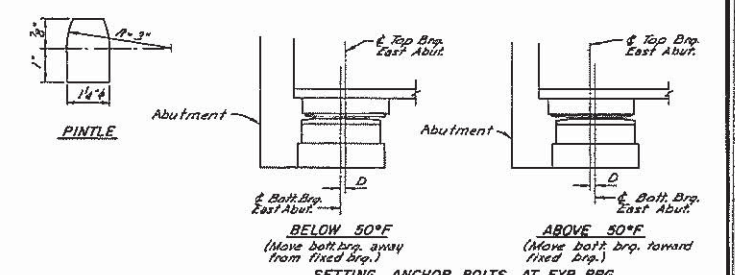


PLAN-TFE SURFACE



TYPE II BOTTOM BEARING ASSEMBLY

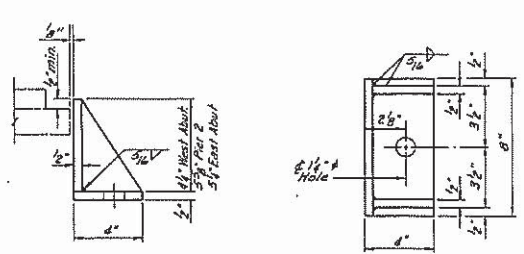
Note: The 1/2" TFE sheet shall be bonded directly to the top steel plate with a two component, medium viscosity epoxy resin, conforming to the requirements of the Federal Specification MSMA-A-134, Type 1. The bond agent shall be applied on the full area of the contact surfaces.
Bonding of 1/2" TFE sheet during vulcanizing process will be permitted provided the process and method of adjusting assembly height is approved by the Engineer.



PINTLE

BELOW 50°F
(Move butt brg. away from fixed brg.)
SETTING ANCHOR BOLTS AT EXP. BRG.
D = 9" per each 100' of expansion for every 15° temp. change from the normal temp. of 50°F.

Notes: Bearings of Pier 1 shall be included in Structural Steel bid item. See Sheet 9 for anchor bolt details.



SIDE RETAINER

4 reg'd. West Abut.
22 reg'd. East Abut.
4 reg'd. Pier 2

1/2" STEEL FILL PLATE AT EXISTING PIER

PIER	BEAM 4	BEAM 5	BEAM 6	BEAM 7
PIER 1	1 1/2"	3"	2"	—

** Thickness shown

BILL OF MATERIALS

Items	UNITS	TOTAL
Elastomeric Bearing Assembly TYPE I	Each	22
Elastomeric Bearing Assembly TYPE II	Each	11

STATE OF ILLINOIS
DEPARTMENT OF TRANSPORTATION

BEARING DEVICES

F.A. ROUTE 53, SECTION 23 BR
HANCOCK COUNTY
STA. 117 + 41.98

U.S. 136 OVER HAMILTON SLOUGH

HOWARD NEEDLES TAMMEN & BERGENOFF **HNTB**
MADE JCL DATE 5/03 CHECKED DJM DATE 6/03