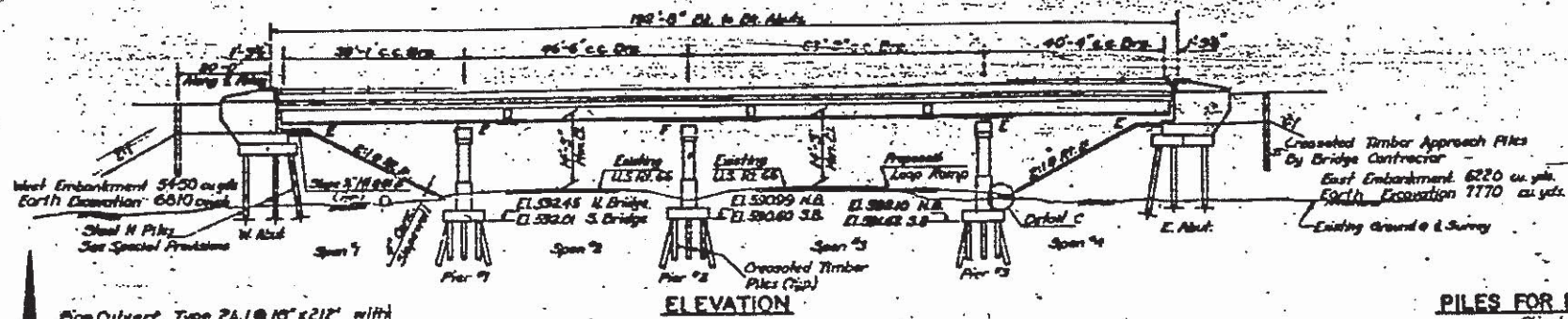


STATE OF ILLINOIS
DEPARTMENT OF PUBLIC WORKS & BUILDINGS
DIVISION OF HIGHWAYS

NO.	DATE	BY	REVISION
1	10/27/11	Jurgensen	Issue for Construction

SHEET 1 OF 10

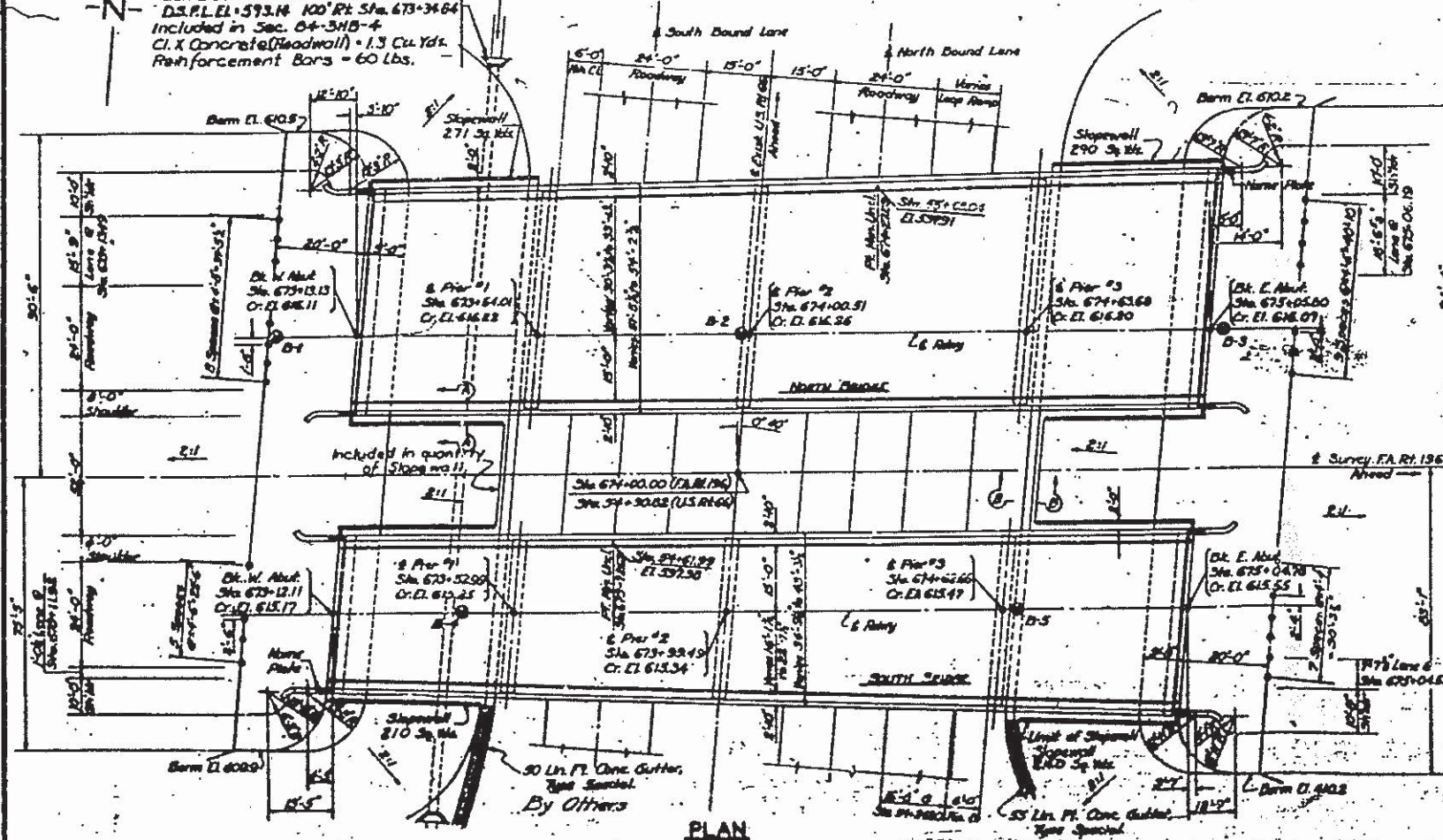


Pipe Culvert, Type 2A, 10' x 21' with Std. F76-D-10-2
US. F.L. EL. = 593.84 HZ. L.S. Sta. 673+31.34
D.S. P.L. EL. = 593.14 100' Pt. Sta. 673+34.84
Included in Sec. 04-31B-4
C.I. X Concrete (Headwall) = 1.3 Cu. Yds.
Reinforcement Bars = 60 lbs.

PILES FOR METHOD II
Standard P108-3
Type - Grouted
Min. Capacity - 15 Tons
Est. Length - 30 FT.
No. Req'd - 33
990 Lin. Ft. Total

STATION 674+00
BUILT BY
STATE OF ILLINOIS
FA. RT. 196 SEC. 04-31B-4
EA. PROJ. U-277(1)
LOADING 1120-316

LETTERING FOR NAME PLATE
See Std. 813



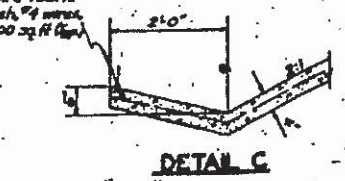
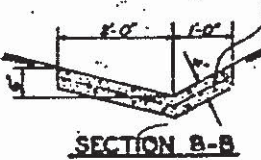
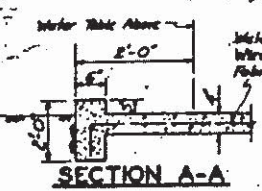
PROFILE OF WEST BOUND F.A. RT. 196
@ Median Edge of Pavement

PROFILE OF EAST BOUND F.A. RT. 196
@ Median Edge of Pavement

PROFILE OF SOUTH BOUND U.S. RT. 66
@ Median Edge of Pavement

PROFILE OF NORTH BOUND U.S. RT. 66
@ Median Edge of Pavement

NOTE:
For Bearings, General Notes,
and Bill of Material see Sh. 2 of 19



DESIGN STRESSES
f = 4000 psi
f' = 20,000 psi (Reinf.)
f' = 18,000 psi (Struct.)
v = 75 psi (Footings)
n = 10
Loading - H20-316-44

Thomas & Rice
Illinois Structural #2194

GENERAL PLAN & ELEVATION
F.A. RT. 196 OVER U.S. RT. 66
PROJECT U-277(1)
FA. ROUTE 196 SEC. 04-31B-4
SANGAMON COUNTY
STATION 674+00

DESIGNED	RCB	CHECKED	RCB
DRAWN	RCB	APPROVED	RCB
DATE			