

STATE OF ILLINOIS
DEPARTMENT OF TRANSPORTATION
DIVISION OF HIGHWAYS

**PROPOSED
HIGHWAY PLANS**

FAI ROUTE 70 (I-70)
SECTION (18-45HB-1)BR
PROJECT ACNHP-0070 (406)
BRIDGE REHABILITATION
CUMBERLAND COUNTY

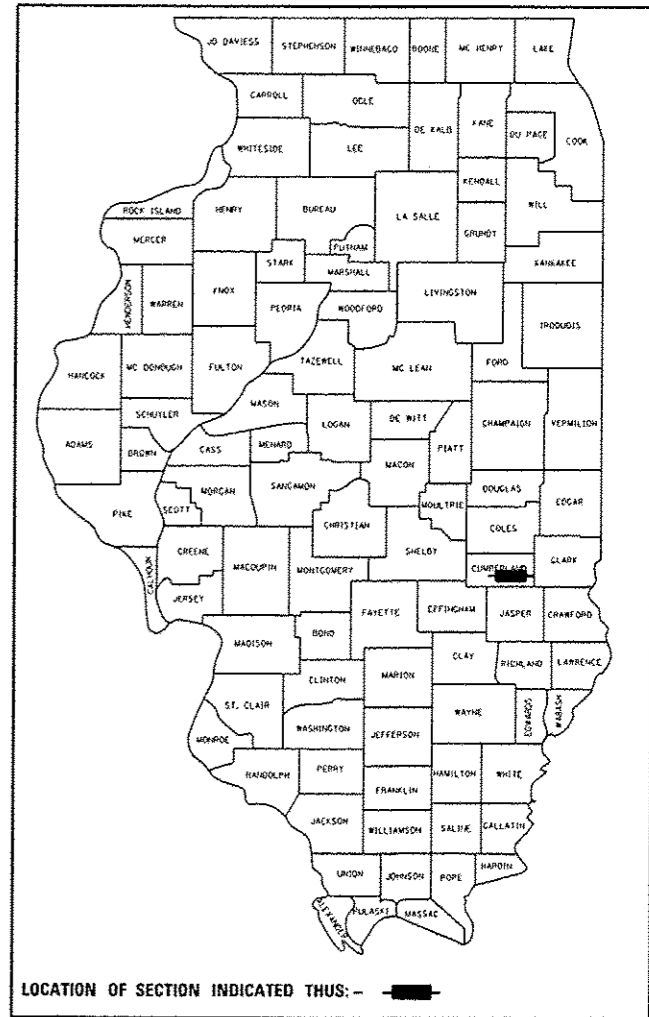
C-97-099-06

FOR INDEX OF SHEETS, SEE SHEET NO. 2

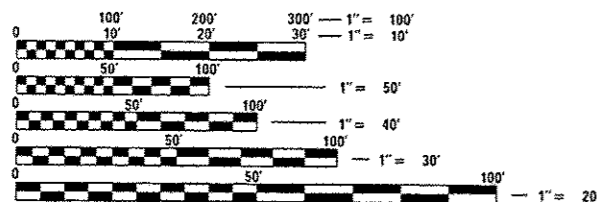
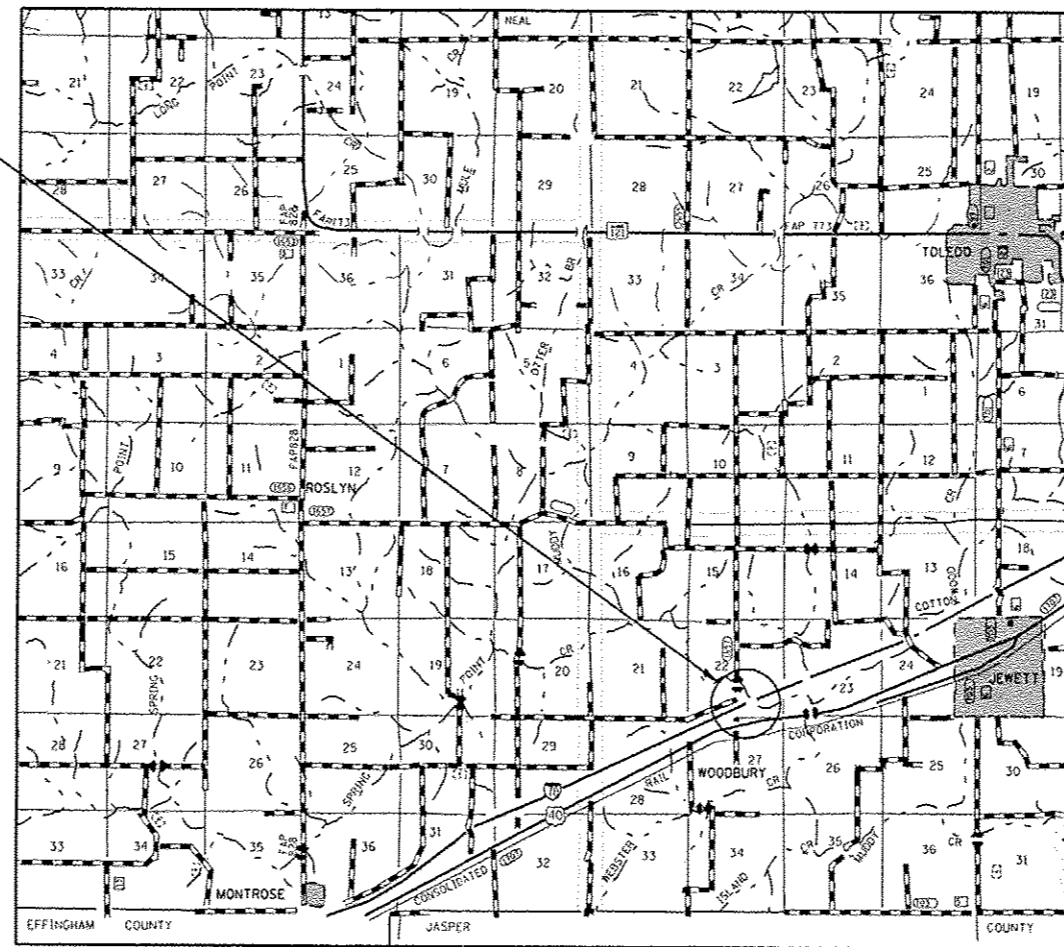
ADT = 18,700 (2014)

| F.A.I. RTE. | SECTION | COUNTY | TOTAL SHEETS | SHEET NO. |
|-------------|---------------|------------|--------------------|-----------|
| 70 | (18-45HB-1)BR | Cumberland | 43 | 1 |
| | | ILLINOIS | CONTRACT NO. 74187 | |

D-97-060-06



LOCATION OF PROJECT



FULL SIZE PLANS HAVE BEEN PREPARED USING STANDARD ENGINEERING SCALES. REDUCED SIZED PLANS WILL NOT CONFORM TO STANDARD SCALES. IN MAKING MEASUREMENTS ON REDUCED PLANS, THE ABOVE SCALES MAY BE USED.

J.U.L.I.E.
JOINT UTILITY LOCATION INFORMATION FOR EXCAVATION
1-800-892-0123
OR 811

PROJECT ENGINEER: MARK DAUGHERTY
PROJECT MANAGER: JOYCE HEMMEN

CONTRACT NO. 74187

GROSS LENGTH = 174 FT. = 0.033 MILE
NET LENGTH = 174 FT. = 0.033 MILE

STATE OF ILLINOIS
DEPARTMENT OF TRANSPORTATION
DIVISION OF HIGHWAYS

SUBMITTED August 15, 2014
Roger L. Oriskany
DEPUTY DIRECTOR OF HIGHWAYS, REGION ENGINEER

Oct 17, 2014
John D. Baranzelli, P.E.
ENGINEER OF DESIGN AND ENVIRONMENT

Oct 17, 2014
Emer Osman, P.E.
DIRECTOR OF HIGHWAYS, CHIEF ENGINEER

PRINTED BY THE AUTHORITY
OF THE STATE OF ILLINOIS