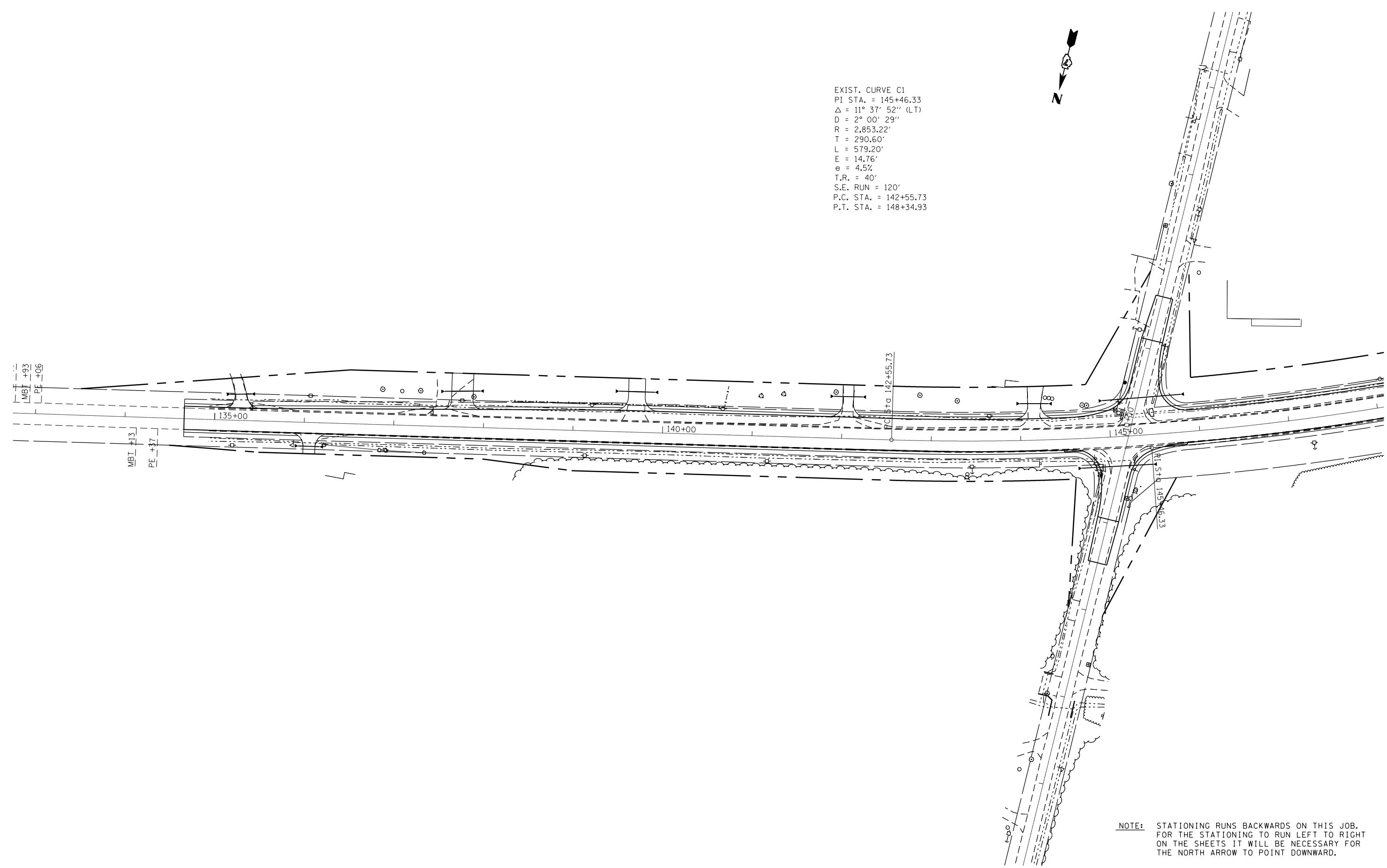


EXIST. CURVE C1
 PI STA. = 145+46.33
 $\Delta = 11^\circ 37' 52''$ (LT)
 D = 2° 00' 29"
 R = 2,853.22'
 T = 290.60'
 L = 579.20'
 E = 14.76'
 e = 4.5%
 T.R. = 40'
 S.E. RUN = 120'
 P.C. STA. = 142+55.73
 P.T. STA. = 148+34.93



NOTE: STATIONING RUNS BACKWARDS ON THIS JOB. FOR THE STATIONING TO RUN LEFT TO RIGHT ON THE SHEETS IT WILL BE NECESSARY FOR THE NORTH ARROW TO POINT DOWNWARD.

FILE NAME =	USER NAME = steffenmk	DESIGNED -	REVISED -
ci:\pw\work\p\dot\steffenmk\dms52730\sh\plan_74246.dgn		DRAWN -	REVISED -
	PLOT SCALE = 100.0000' / in.	CHECKED -	REVISED -
	PLOT DATE = 8/13/2014	DATE -	REVISED -

**STATE OF ILLINOIS
 DEPARTMENT OF TRANSPORTATION**

PLAN SHEET

SCALE: 50 SHEET NO. 8 OF 14 SHEETS STA. 133+00 TO STA. 148+00

F.A.S. RTE.	SECTION	COUNTY	TOTAL SHEETS	SHEET NO.
1806	(2,2)RS-2, (2N)	LAWRENCE	82	28
CONTRACT NO. 74246				
FED. ROAD DIST. NO.		ILLINOIS FED. AID PROJECT		