

STATE OF ILLINOIS  
DEPARTMENT OF TRANSPORTATION  
DIVISION OF HIGHWAYS

**PROPOSED  
HIGHWAY PLANS**

FAP ROUTE 749 (IL133)  
SECTION (122BR)B-1  
PROJECT ACF-0749 (026)  
BRIDGE REPLACEMENT  
COLES COUNTY

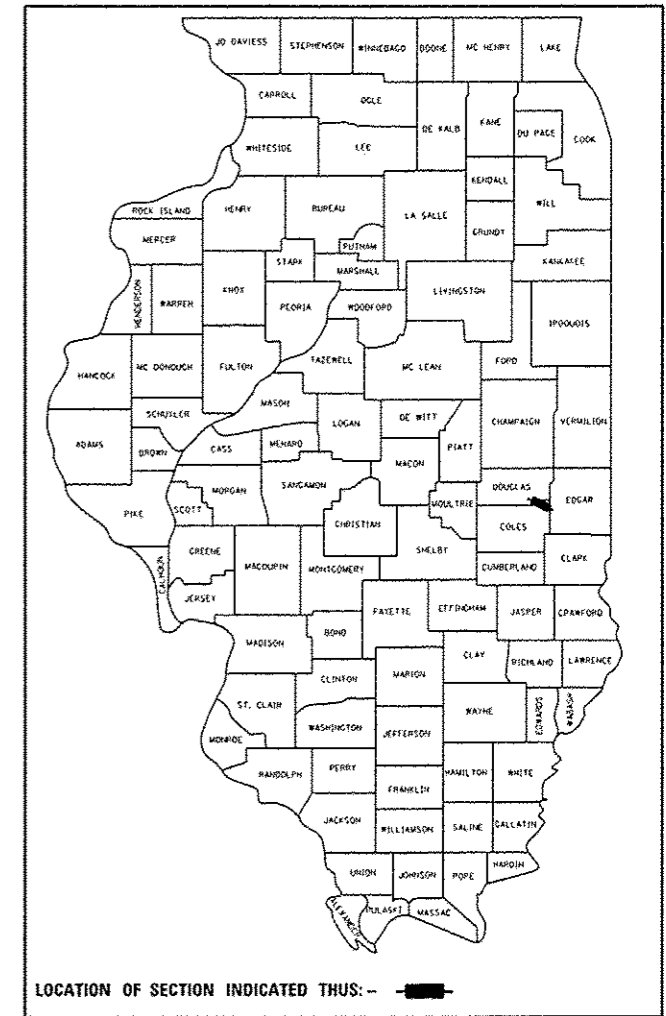
C-97-028-09

FOR INDEX OF SHEETS, SEE SHEET NO. 2

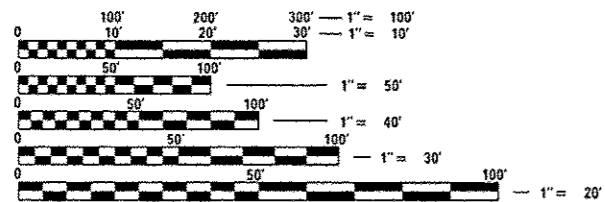
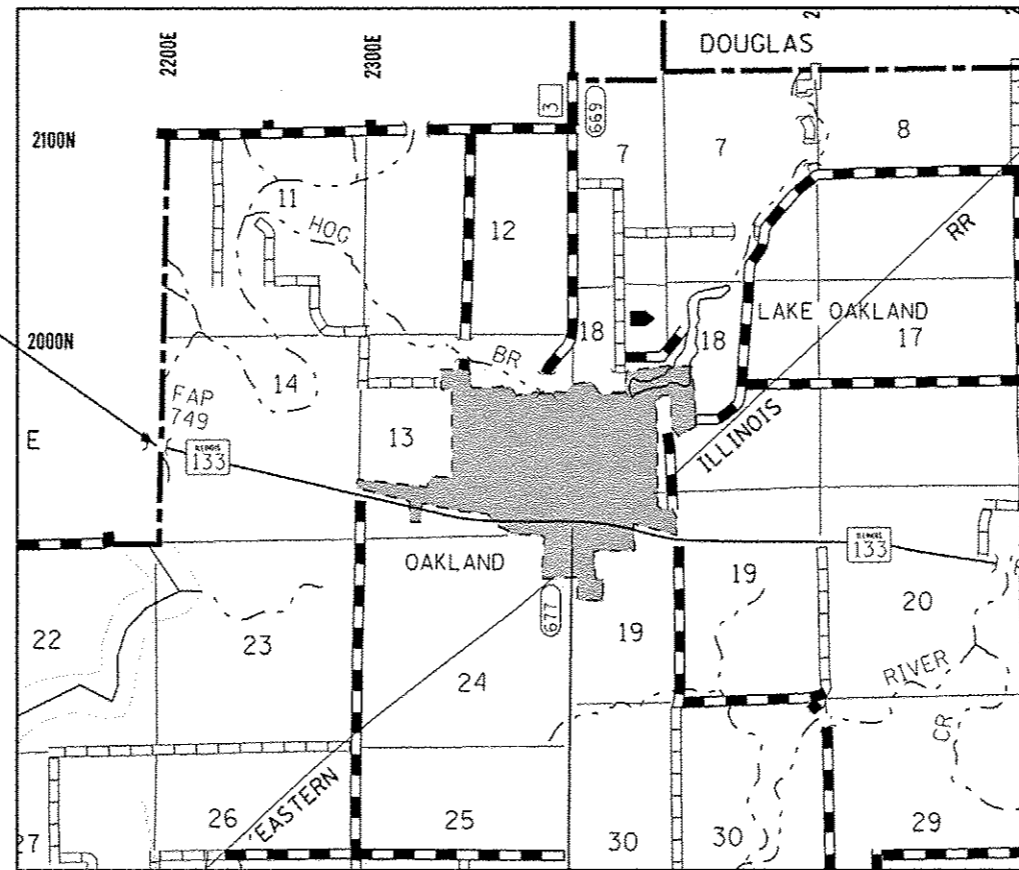
ADT (2013) = 2050

F.A.P. RTE.	SECTION	COUNTY	TOTAL SHEETS	SHEET NO.
749	(122BR)B-1	COLES	60	1
		ILLINOIS	CONTRACT NO. 74350	

D-97-005-09



LOCATION OF PROPOSED  
BRIDGE REPLACEMENT



FULL SIZE PLANS HAVE BEEN PREPARED USING STANDARD ENGINEERING SCALES. REDUCED SIZED PLANS WILL NOT CONFORM TO STANDARD SCALES. IN MAKING MEASUREMENTS ON REDUCED PLANS, THE ABOVE SCALES MAY BE USED.

J.U.L.I.E.  
JOINT UTILITY LOCATION INFORMATION FOR EXCAVATION  
1-800-892-0123  
OR 811

PROJECT ENGINEER: MARK DAUGHERTY  
PROJECT MANAGER: BRIAN LEWIS

CONTRACT NO. 74350

GROSS LENGTH = 1515 FT. = 0.29 MILE  
NET LENGTH = 1515 FT. = 0.29 MILE

STATE OF ILLINOIS  
DEPARTMENT OF TRANSPORTATION  
DIVISION OF HIGHWAYS

SUBMITTED August 13, 2014  
Royce C. Dishell, P.E.  
DEPUTY DIRECTOR OF HIGHWAYS, REGION ENGINEER

Oct 17, 2014  
John D. Baranzelli, P.E.  
acting ENGINEER OF DESIGN AND ENVIRONMENT

Oct 17, 2014  
Omer Osman, P.E.  
DIRECTOR OF HIGHWAYS, CHIEF ENGINEER

**PRINTED BY THE AUTHORITY  
OF THE STATE OF ILLINOIS**