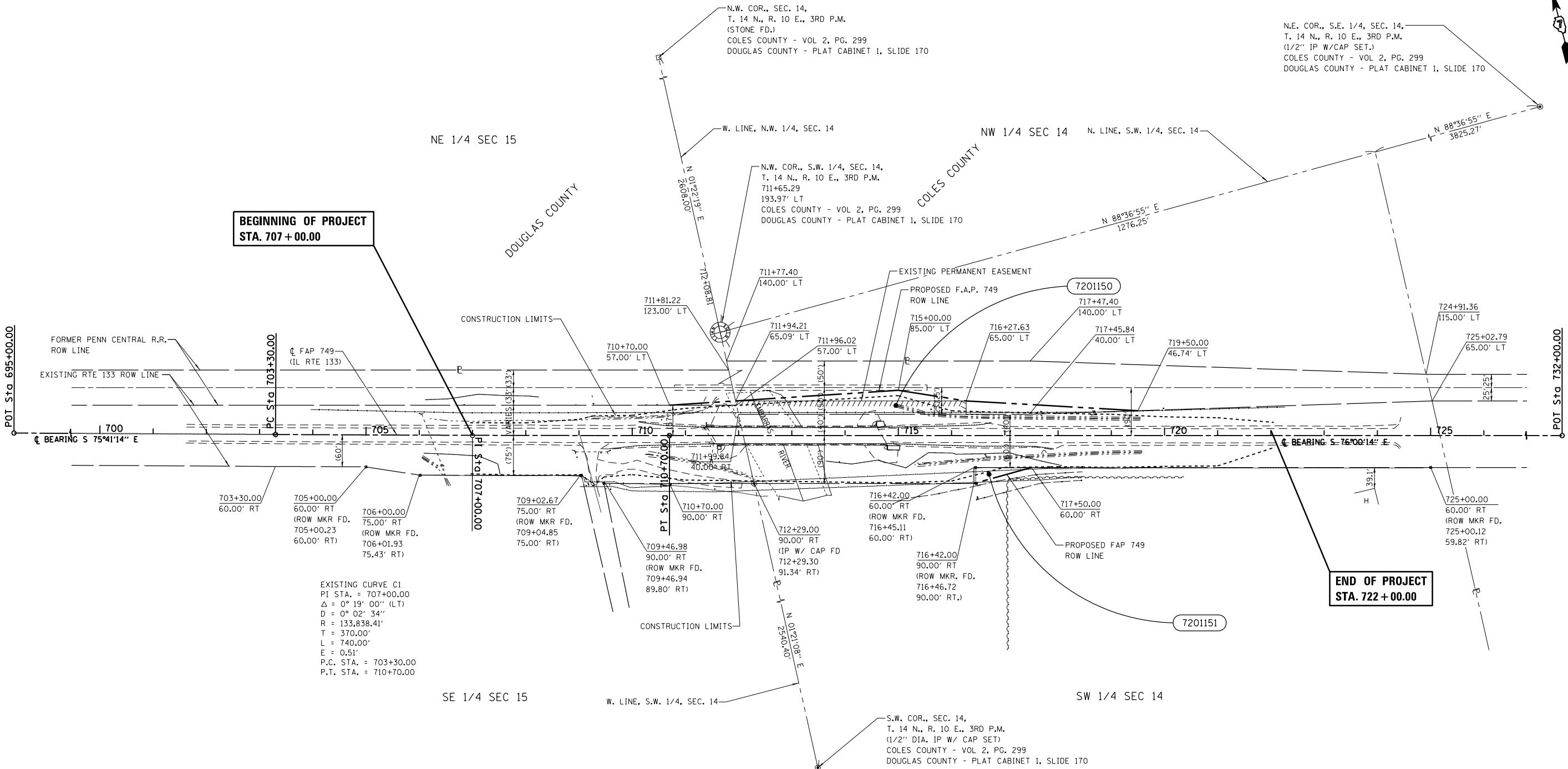


T. 14 N., R. 10 E., 3rd P.M., SARGENT & EAST OAKLAND TWPS.



**BEGINNING OF PROJECT
STA. 707+00.00**

**END OF PROJECT
STA. 722+00.00**

EXISTING CURVE C1
PI STA. = 707+00.00
Δ = 0° 19' 00" (LT)
D = 0° 02' 34"
R = 133,838.41'
T = 370.00'
L = 740.00'
E = 0.51'
P.C. STA. = 703+30.00
P.T. STA. = 710+70.00

NOTE:
BEARINGS ARE REFERENCED TO THE
ILLINOIS STATE PLANE COORDINATE
SYSTEM, EAST ZONE DATUM OF
1983(07)

⊙ - IRON PIN
□ - STONE
⊠ - ROW MARKER

PARCEL	OWNER	AREA TAKEN		EASEMENT	AREA REM	INST	RECORDED				EXCESS		
		ADD	EXIST				MICRO	FILM NO	DATE	BOOK	PAGE	AREA	SOLD
7201150	ILLINOIS DEPARTMENT OF NATURAL RESOURCES	0.213	0.247		9.670								
7201151	JOHN A. CONNOR	0.037	0.000		105.143								