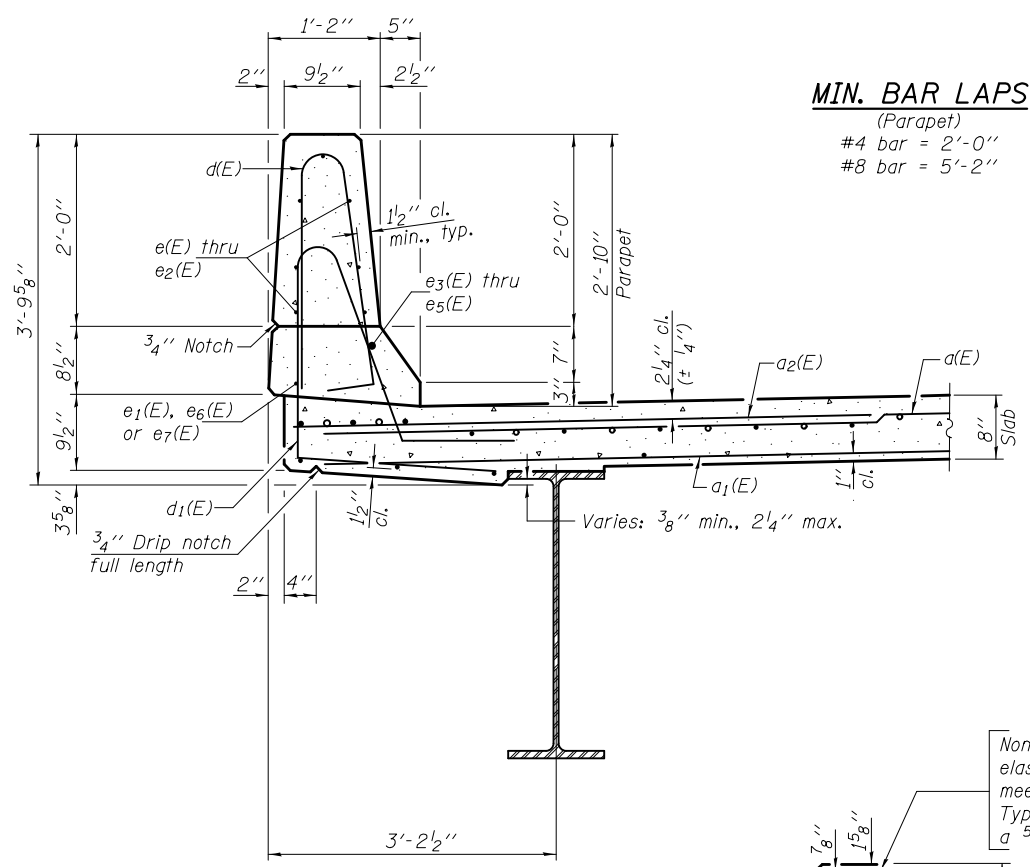
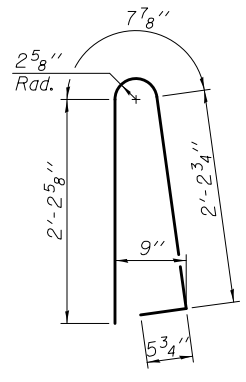


**INSIDE ELEVATION OF NORTH PARAPET**  
(Looking North; South parapet similar)

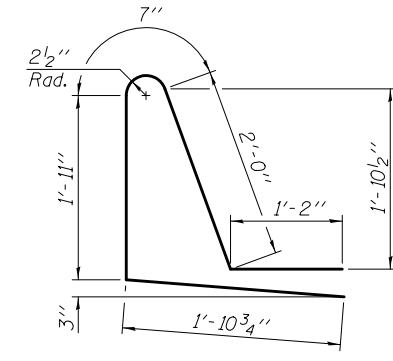


**SECTION THRU PARAPET**

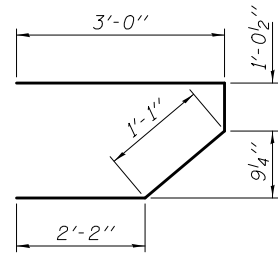
**MIN. BAR LAPS**  
(Parapet)  
#4 bar = 2'-0"  
#8 bar = 5'-2"



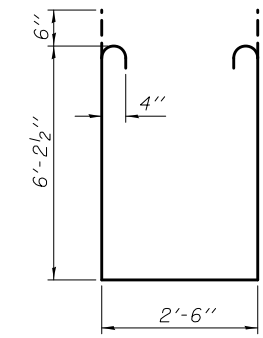
**BAR d(E)**



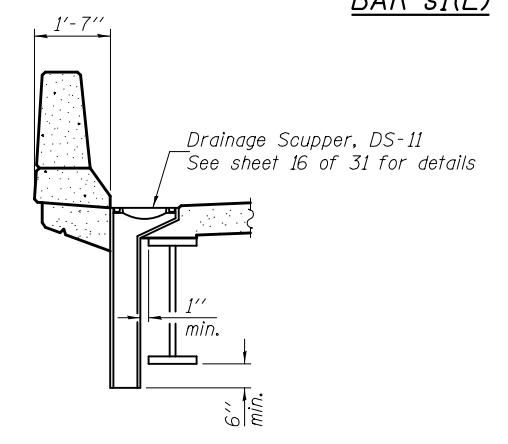
**BAR d1(E)**



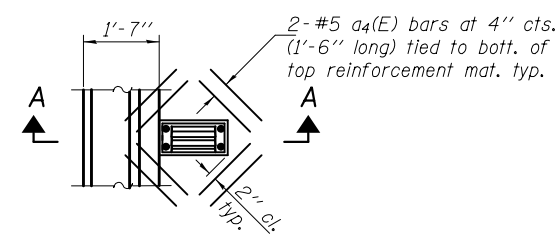
**BAR s(E)**



**BAR s1(E)**



**SECTION A-A**



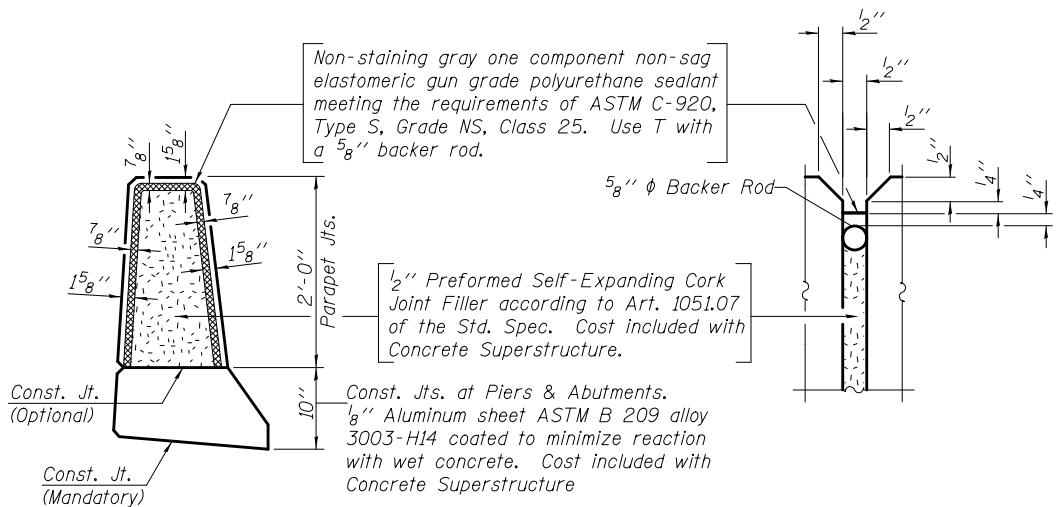
**PLAN**

Note: Cut longitudinal reinforcement to clear drainage scuppers.

**SUPERSTRUCTURE BILL OF MATERIAL**

Bar	No.	Size	Length	Shape
a(E)	549	#5	34'-6"	—
a1(E)	411	#5	33'-6"	—
a2(E)	1098	#6	6'-6"	—
a3(E)	4	#5	39'-10"	—
a4(E)	32	#5	1'-6"	—
b(E)	418	#5	33'-6"	—
b1(E)	105	#6	37'-6"	—
b2(E)	372	#5	31'-0"	—
d(E)	750	#5	5'-7"	—
d1(E)	750	#5	7'-7"	—
e(E)	140	#4	17'-6"	—
e1(E)	32	#4	19'-9"	—
e2(E)	98	#4	17'-8"	—
e3(E)	12	#8	33'-11"	—
e4(E)	4	#8	19'-9"	—
e5(E)	8	#8	35'-3"	—
e6(E)	16	#4	23'-11"	—
e7(E)	12	#4	22'-7"	—
m(E)	10	#6	39'-11"	—
m1(E)	8	#6	9'-2"	—
m2(E)	16	#6	10'-0"	—
m3(E)	10	#6	6'-2"	—
m4(E)	4	#6	3'-3"	—
s(E)	72	#5	7'-4"	—
s1(E)	62	#4	15'-11"	—
Reinforcement Bars, Epoxy Coated		Pound	95870	
Concrete Superstructure		Cu. Yds.	442.7	

Bars indicated thus 1 x 6-#5 etc. indicates 1 line of bars with 6 lengths per line.



**PARAPET JOINT DETAILS**

DESIGNED - Justin T. Belue	EXAMINED - <i>Joanne F. [Signature]</i>	DATE - OCTOBER 16, 2014
CHECKED - David H. Richter	PASSED - <i>Carl [Signature]</i>	REVISED
DRAWN - h.t. duong		REVISED
CHECKED - JTB/DHR		

**STATE OF ILLINOIS**  
**DEPARTMENT OF TRANSPORTATION**

**SUPERSTRUCTURE DETAILS**  
**STRUCTURE NO. 015-0076**

F.A.P. RTE.	SECTION	COUNTY	TOTAL SHEETS	SHEET NO.
749	(122BR)B-1	COLES	60	27
CONTRACT NO. 74350				

SHEET NO. 10 OF 31 SHEETS

ILLINOIS FED. AID PROJECT