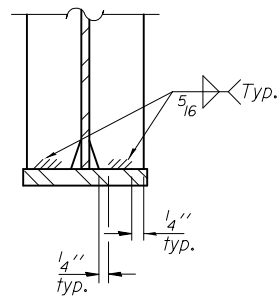
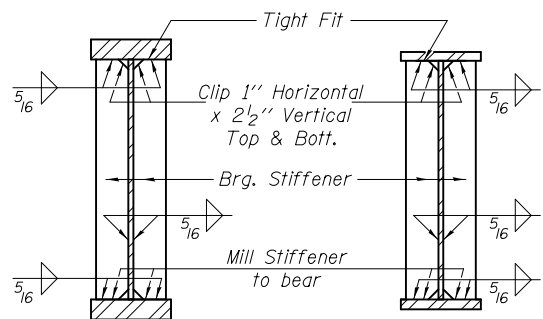


**CROSS FRAME, CF**  
(75 Required)

\*Fillet weld angles along 3 sides on one face of gusset plate.

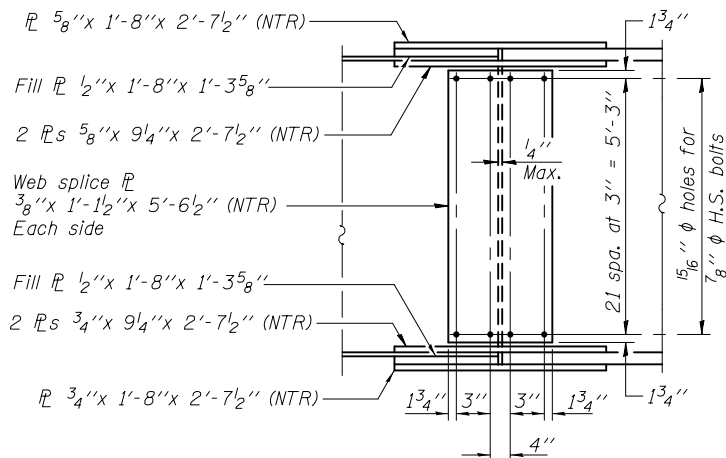


**DETAIL A**

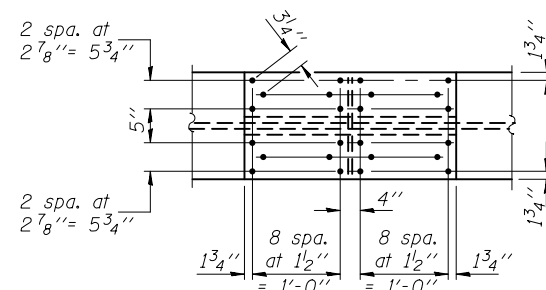


**SECTION AT PIER**

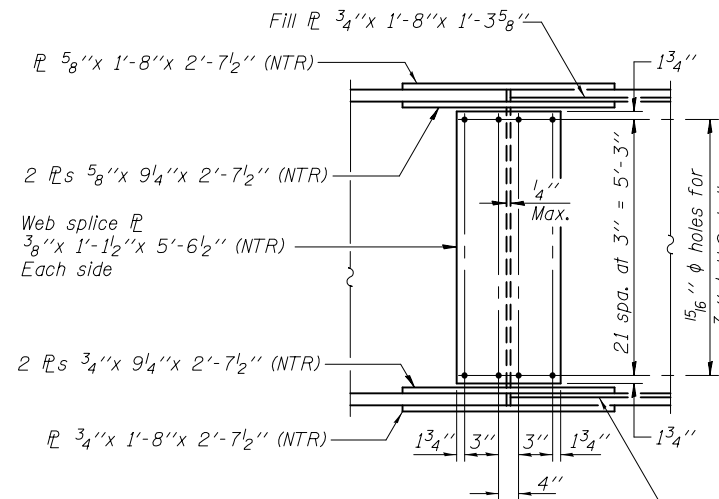
**SECTION AT ABUTMENT**



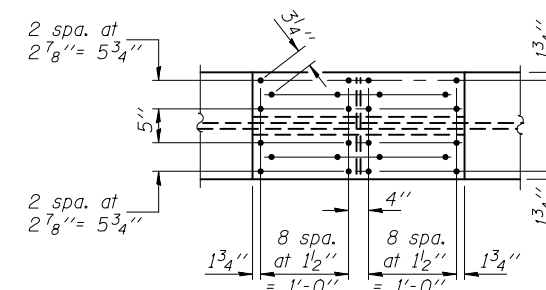
**ELEVATION**



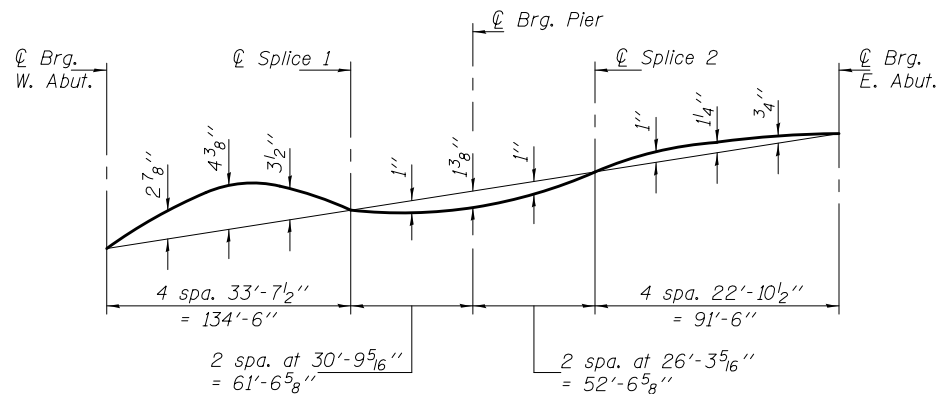
**PLAN - TOP & BOTT. FLANGES**  
**SPLICE 1**



**ELEVATION**



**PLAN - TOP & BOTT. FLANGES**  
**SPLICE 2**



**CAMBER DIAGRAM**

Notes: Two hardened washers shall be required for all oversized holes in cross frames.  
All splice plates except filler plates shall be AASHTO M 270 Grade 50.

DESIGNED - Justin T. Belue  
CHECKED - David H. Richter  
DRAWN - h.t. duong  
CHECKED - JTB/DHR

EXAMINED  
PASSED  
ACTING ENGINEER OF BRIDGES AND STRUCTURES

DATE - OCTOBER 16, 2014  
REVISED  
REVISED

**STATE OF ILLINOIS**  
**DEPARTMENT OF TRANSPORTATION**

**STRUCTURAL STEEL DETAILS**  
**STRUCTURE NO. 015-0076**

SHEET NO. 18 OF 31 SHEETS

F.A.P. RTE.	SECTION	COUNTY	TOTAL SHEETS	SHEET NO.
749	(122BRIB-1)	COLES	60	35
CONTRACT NO. 74350				
ILLINOIS FED. AID PROJECT				