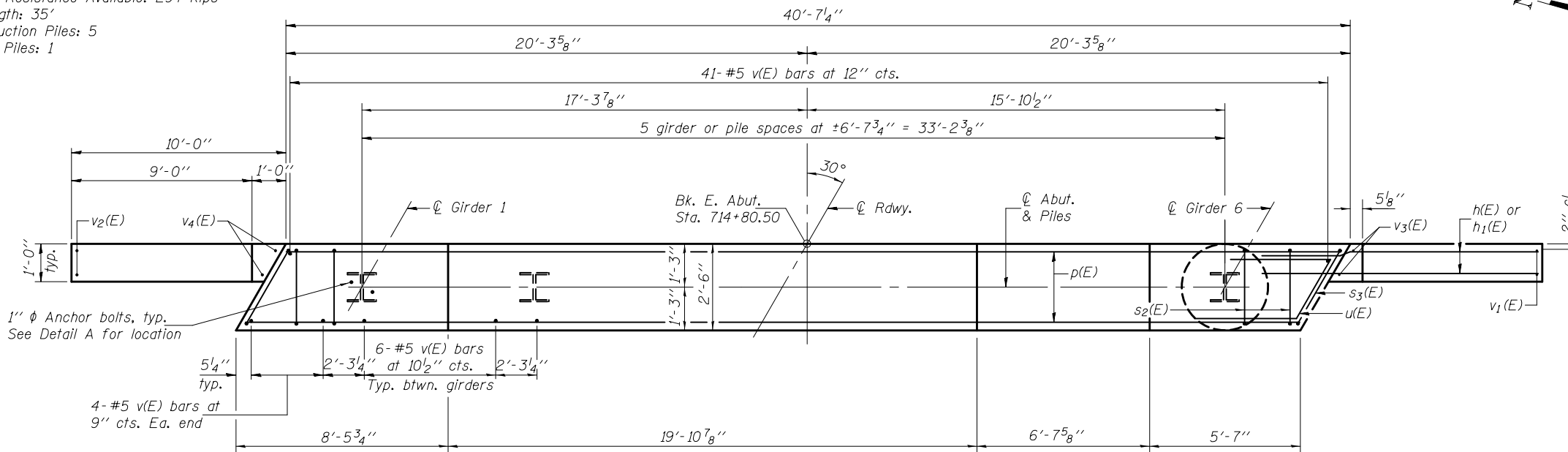


PILE DATA

Type: Steel HP14x73 with Pile Shoes
 Nominal Required Bearing: 578 Kips
 Factored Resistance Available: 294 Kips
 Est. Length: 35'
 No. Production Piles: 5
 No. Test Piles: 1

ELEVATION
(Looking east)

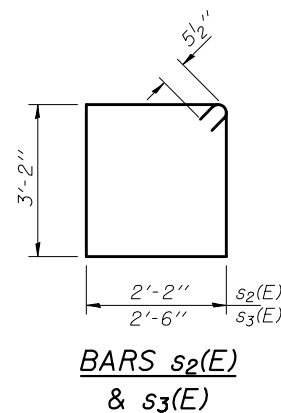


PLAN

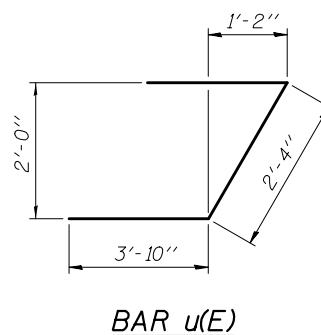
BILL OF MATERIAL

Bar	No.	Size	Length	Shape
h(E)	68	#7	12'-8"	—
h1(E)	4	#6	12'-10"	—
p(E)	9	#7	40'-3"	—
s2(E)	36	#5	11'-7"	□
s3(E)	2	#5	12'-3"	□
u(E)	8	#6	10'-0"	┘
v(E)	79	#5	4'-4"	—
v1(E)	9	#5	16'-2"	—
v2(E)	9	#5	16'-6"	—
v3(E)	4	#5	10'-2"	—
v4(E)	4	#5	10'-4"	—
Structure Excavation	Cu. Yd.		38	
Concrete Structures	Cu. Yd.		20.3	
Reinforcement Bars, Epoxy Coated	Pound		3910	
Furnishing Steel Piles HP14x73	Foot		175	
Driving Piles	Foot		175	
Test Pile Steel HP14x73	Each		1	
Pile Shoes	Each		6	
Concrete Encasement	Cu. Yd.		3.3	
Anchor Bolts, 1"	Each		12	

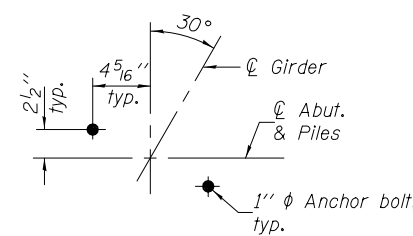
Notes: Pour steps monolithically with cap.
 For details of piles and concrete encasement, see sheet 23 of 31.



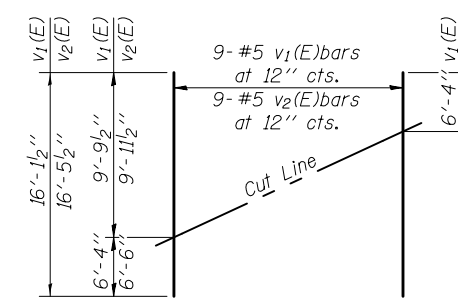
BARS s2(E) & s3(E)



BAR u(E)



DETAIL A



FIELD CUTTING DIAGRAM

Order v1(E) & v2(E) full length. Cut as shown and use remainder of bars in opposite face.

DESIGNED - Justin T. Belue	EXAMINED - <i>Joanne F. [Signature]</i>	DATE - OCTOBER 16, 2014
CHECKED - David H. Richter	PASSED - <i>Carl [Signature]</i>	REVISED -
DRAWN - h.t. duong	ACTING ENGINEER OF BRIDGES AND STRUCTURES	REVISED -
CHECKED - JTB/DHR		

STATE OF ILLINOIS
DEPARTMENT OF TRANSPORTATION

EAST ABUTMENT
STRUCTURE NO. 015-0076

SHEET NO. 21 OF 31 SHEETS

F.A.P. RTE.	SECTION	COUNTY	TOTAL SHEETS	SHEET NO.
749	(122BRIB-1)	COLES	60	38
CONTRACT NO. 74350				
ILLINOIS FED. AID PROJECT				