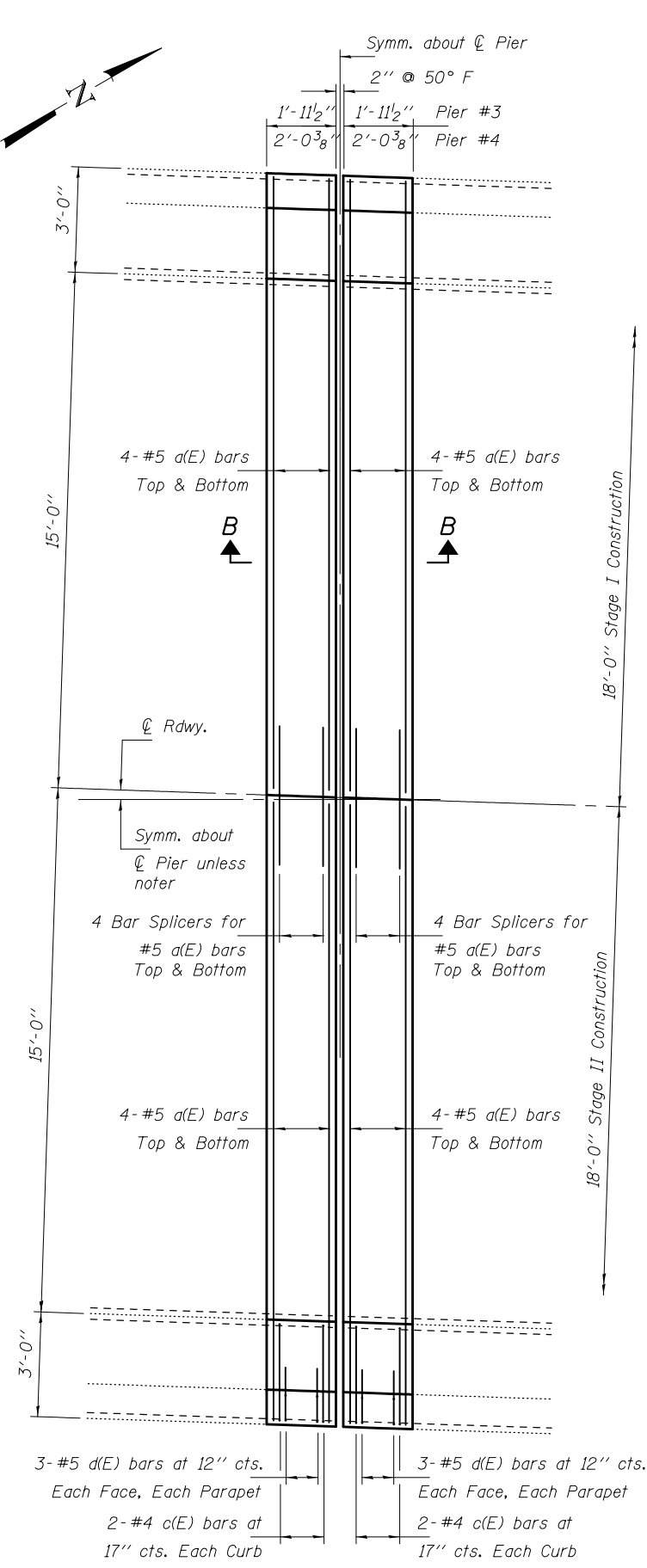
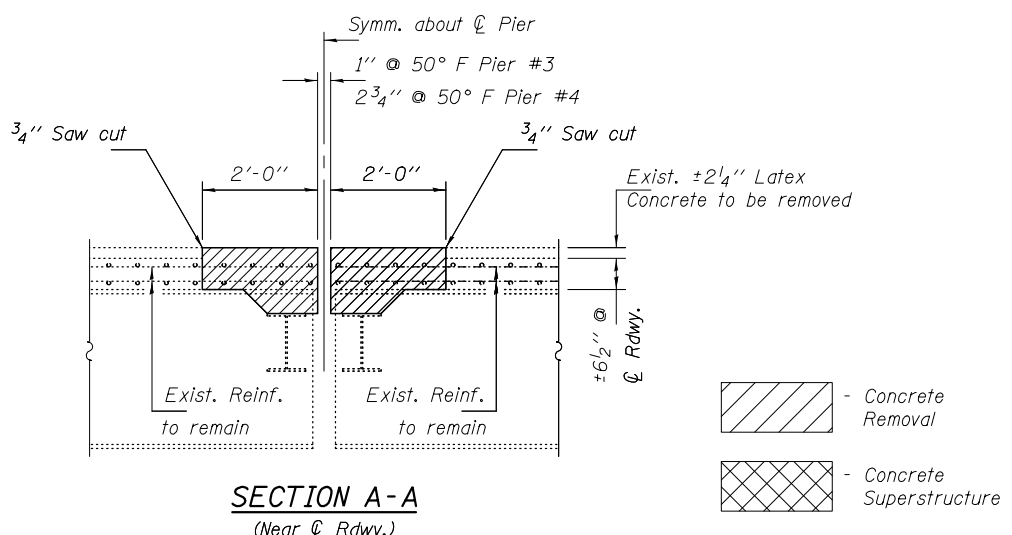


**REMOVAL PLAN**

Pier #3 shown  
Pier #4 similar  
by rotation.  
Existing Reinf.  
to remain (Typ.)

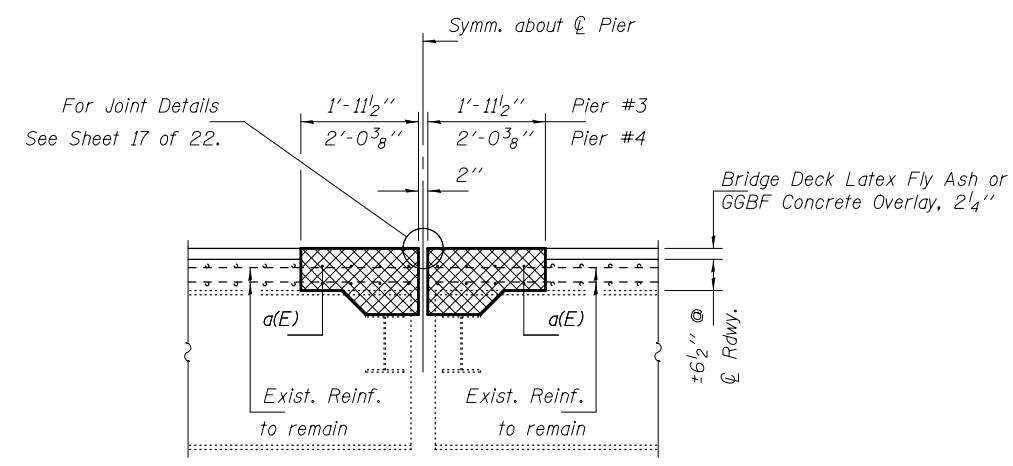


**REPLACEMENT PLAN**

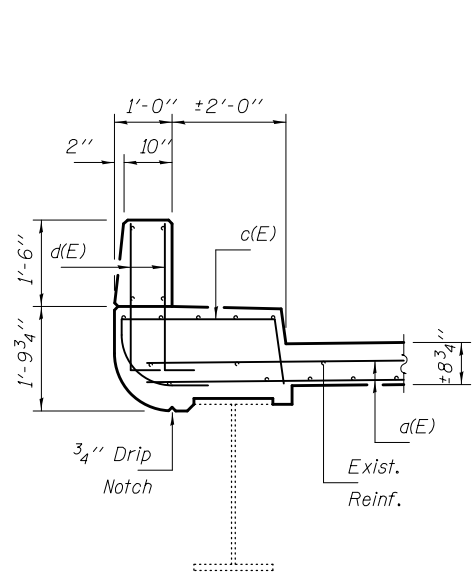


**SECTION A-A**  
(Near  $\varnothing$  Rdwy.)

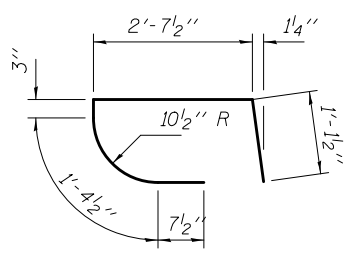
- Concrete Removal  
- Concrete Superstructure



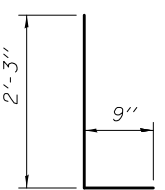
**SECTION B-B**  
(Near  $\varnothing$  Rdwy.)



**SECTION THRU CURB**



**BAR c(E)**



**BAR d(E)**

**BILL OF MATERIAL**

Bar	No.	Size	Length	Shape	
a(E)	128	#5	17'-9"	—	
c(E)	32	#4	6'-0"	┌	
d(E)	96	#5	3'-0"	└	
Concrete Removal				Cu. Yd.	26.3
Concrete Superstructure				Cu. Yd.	26.3
Reinforcement Bars, Epoxy Coated				Pound	2800

DESIGNED SMR	EXAMINED <i>Timothy A. ...</i>	DATE October 15, 2014
CHECKED CCC	PASSED <i>Carl ...</i>	REVISED
DRAWN J. Schneller	ACTING ENGINEER OF BRIDGES AND STRUCTURES	REVISED
CHECKED SMR CCC		

**STATE OF ILLINOIS**  
**DEPARTMENT OF TRANSPORTATION**

**JOINT REPAIR DETAILS PIERS #3 & #4**  
**SN 025-0071 & 025-0072**

SHEET NO. 11 OF 22 SHEETS

F.A.I. RTE.	SECTION	COUNTY	TOTAL SHEETS	SHEET NO.
57	(25-6, 7)RS-2	EFFINGHAM	63	39
CONTRACT NO. 74638			ILLINOIS FED. AID PROJECT	