

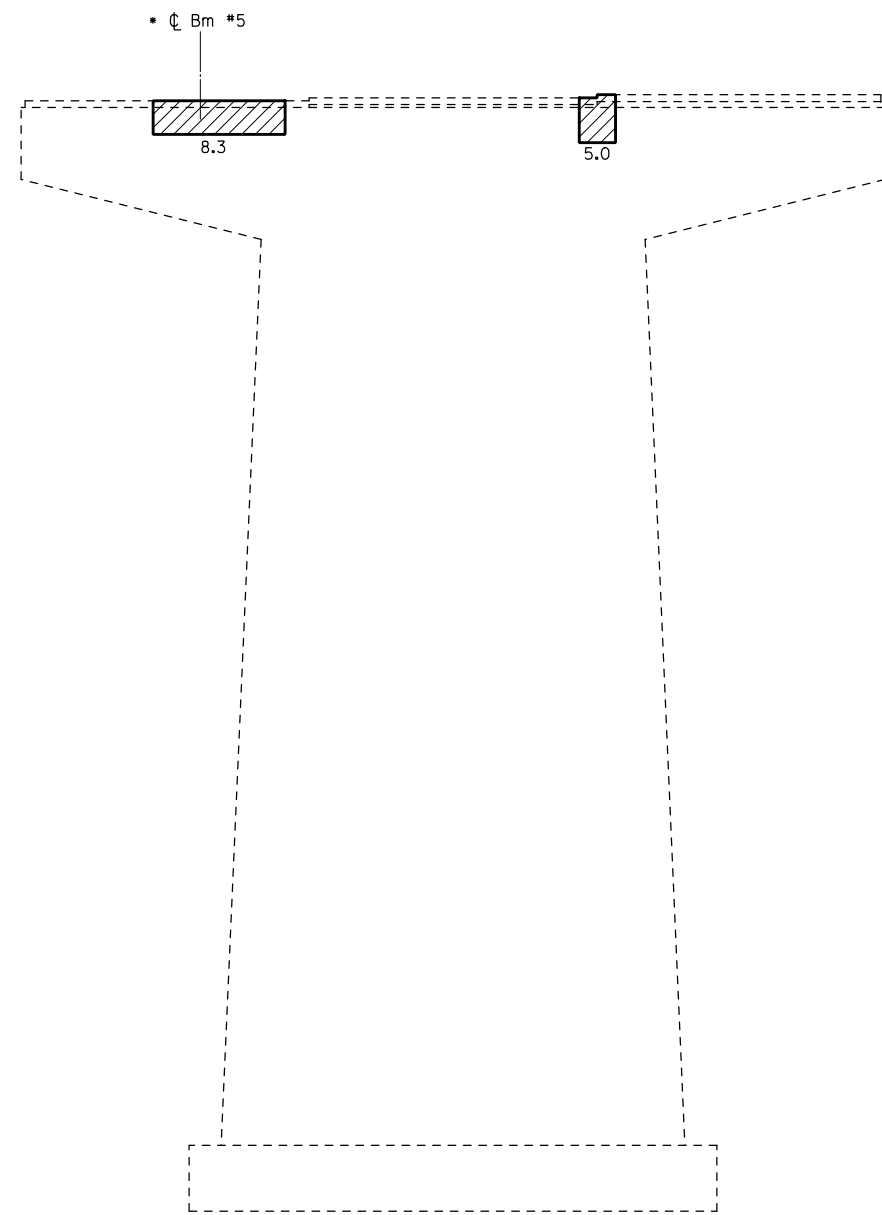
PIER #3 - NORTH FACE

SN 025-0071

• Temporary Shoring and Cribbing required.

BEAM REACTIONS

	South Brg. Pier #3	North Brg. Pier #3
R _D (k)	21.6	42.8
R _L (k)	33.3	37.7
Imp. (k)	9.3	8.7
R _{Total} (k)	64.2	89.2



PIER #3 - SOUTH FACE

SN 025-0071

BILL OF MATERIAL

ITEM	UNIT	TOTAL
Temporary Shoring & Cribbing	Each	2
Structural Repair of Concrete (Depth Equal to or Less than 5")	Sq. Ft.	93.7

NOTE: QUANTITIES ARE ESTIMATED. ACTUAL QUANTITIES TO BE DETERMINED BY THE RESIDENT ENGINEER.

FILE NAME =	USER NAME = \$USER*	DESIGNED - MEA	REVISED -
\$FILEL\$		DRAWN - CKT	REVISED -
\$MODELNAME\$		CHECKED - MEA	REVISED -
	PLOT DATE = \$DATE*	DATE - 8/11/2014	REVISED -

**STATE OF ILLINOIS
DEPARTMENT OF TRANSPORTATION**

STRUCTURAL REPAIR OF CONCRETE ≤ 5"
SN 025-0071 (NB)

SCALE: SHEET 12 OF 22 SHEETS STA. TO STA.

F.A.I. RTE.	SECTION	COUNTY	TOTAL SHEETS	SHEET NO.
57	(25-6, 7)RS-2	EFFINGHAM	63	40
ILLINOIS FED. AID PROJECT			CONTRACT NO. 74638	