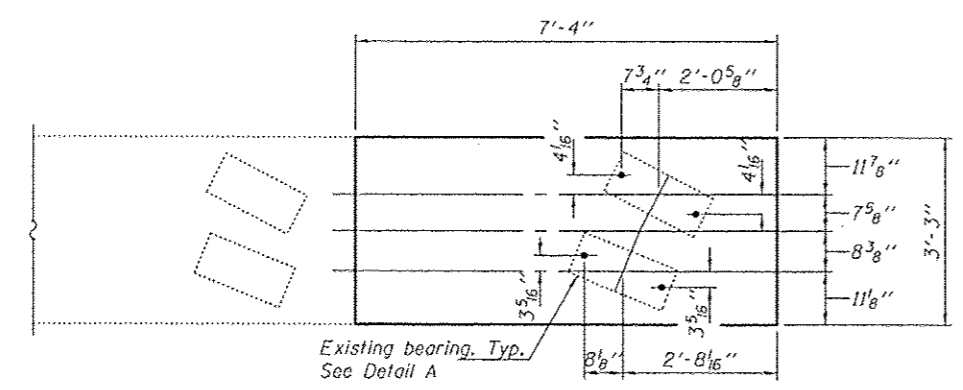
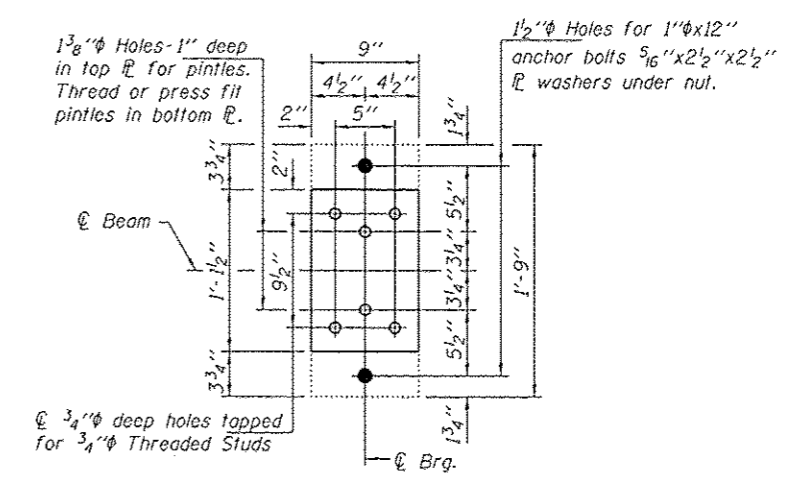


**TOP PLATE REMOVAL DETAIL**  
Cost Included with Concrete Removal.

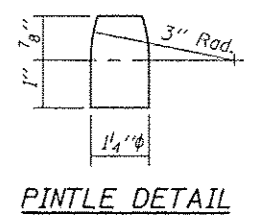
Notes:  
Anchor bolts shall be ASTM F1554 all-thread (or an Engineer-approved alternate material) of the grade(s) and diameter(s) specified. ASTM A307 Grade C anchor bolts may be used in lieu of ASTM F1554 Grade 36 (Fy=36ksi). The corresponding specified grade of AASHTO M314 anchor bolts may be used in lieu of ASTM F1554.  
Anchor bolts to be installed in holes drilled after the bearing is in place.  
Anchor bolts shall be installed according to Article 521.06 of the Standard Specifications.



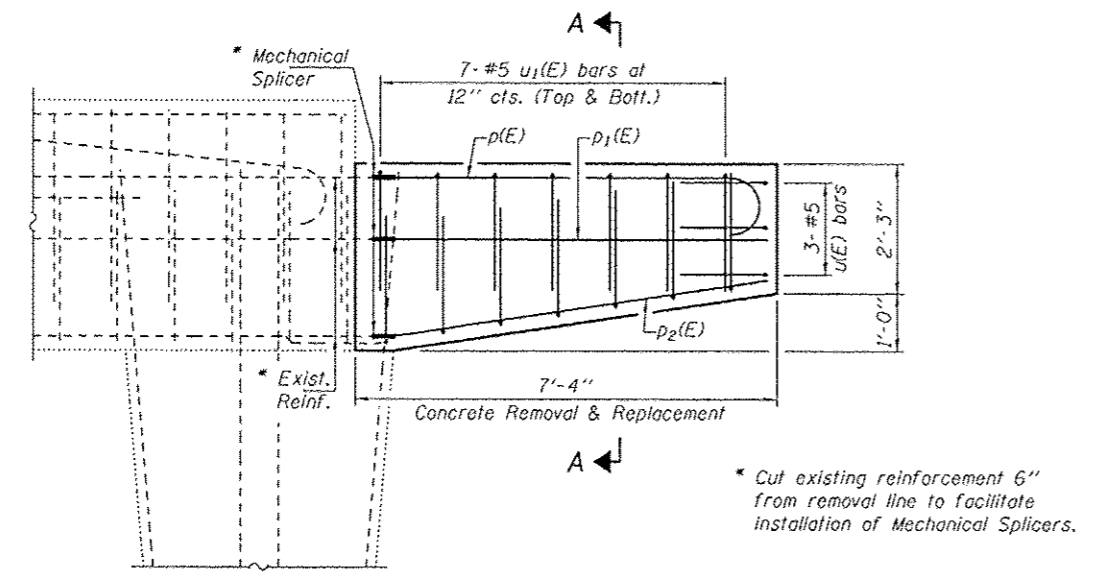
**PIER 1 REPAIR PLAN**



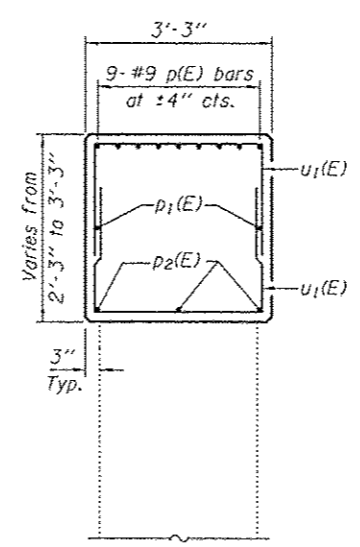
**DETAIL A**  
Cost included with Structural Steel Repair.



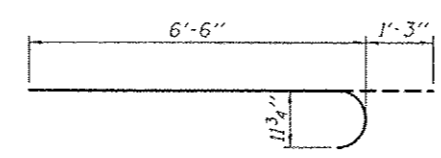
**PINTLE DETAIL**



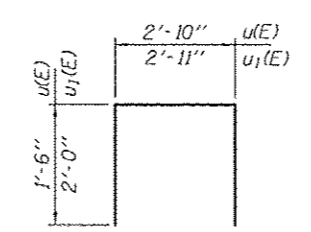
**PIER 1 REPAIR DETAIL**



**SECTION A-A**



**BAR p(E)**



**BARS u(E) & u1(E)**

**BILL OF MATERIAL**

| Bar                              | No. | Size | Length  | Shape |
|----------------------------------|-----|------|---------|-------|
| p(E)                             | 9   | #9   | 7'-9"   | —     |
| p1(E)                            | 2   | #5   | 6'-8"   | —     |
| p2(E)                            | 3   | #5   | 6'-8"   | —     |
| u(E)                             | 3   | #5   | 5'-10"  | □     |
| u1(E)                            | 14  | #6   | 6'-11"  | □     |
| Concrete Removal                 |     |      | Cu. Yd. | 2.2   |
| Concrete Structures              |     |      | Cu. Yd. | 2.2   |
| Mechanical Splicers              |     |      | Each    | 14    |
| Reinforcement Bars, Epoxy Coated |     |      | Pounds  | 400   |

For additional pier repairs, see sheet 12 & 16 of 20.