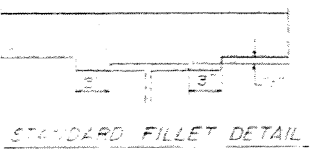
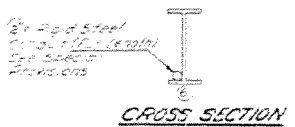
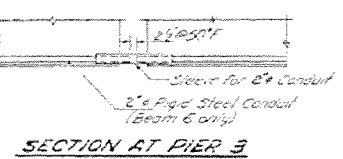
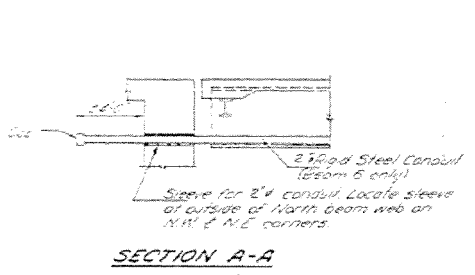


STATE OF ILLINOIS
DEPARTMENT OF PUBLIC WORKS & BUILDINGS
DIVISION OF HIGHWAYS

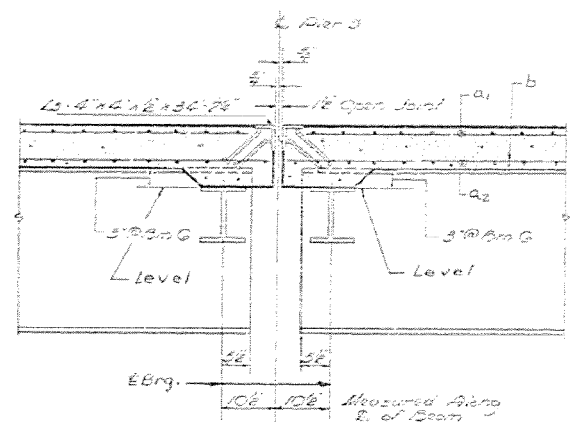
| | | | | |
|----------|-----|-----------|-------|--------|
| DATE | NO. | BY | CHKD. | APP'D. |
| 11/22/12 | 14 | M. J. ... | ... | ... |

When this 2, 3, 4, 5 etc indicates
bars with lengths per line
etc = 20' etc

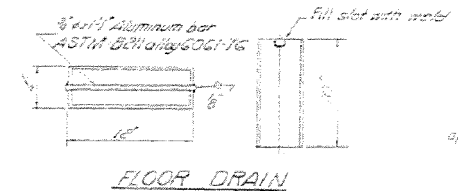


After a structural steel has been
cut, the ends of the cut lengths of the beams
and girders shall be finished as shown on sheets 11/12.
The fillets shall be finished from the "Grade Elevations"
and "Clearance Elevations" shown on sheets 11/12.
The fillet shall be finished to the full height of
the beam.

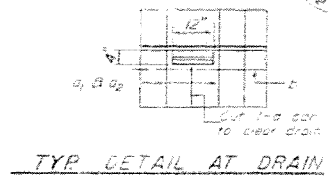
DESIGNED -
DRAWN -
CHECKED -
DATE -



SECTION AT PIER 3
See Section A-A for Details
of Expansion Angles.



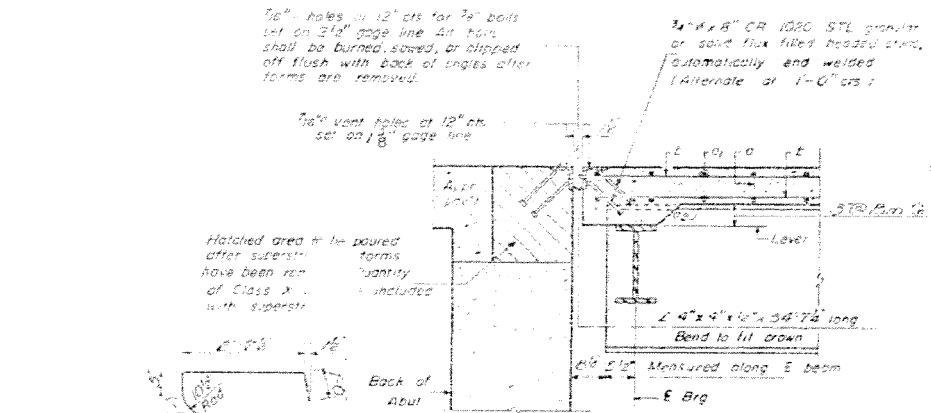
FLOOR DRAIN



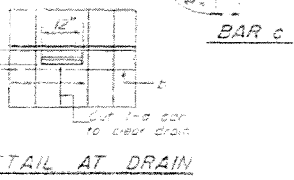
TYP. DETAIL AT DRAIN



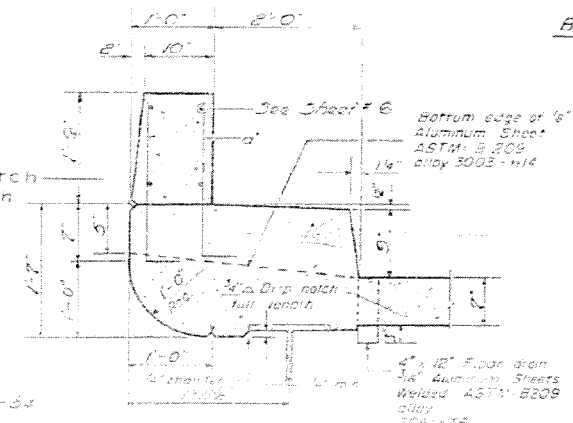
BAR - d



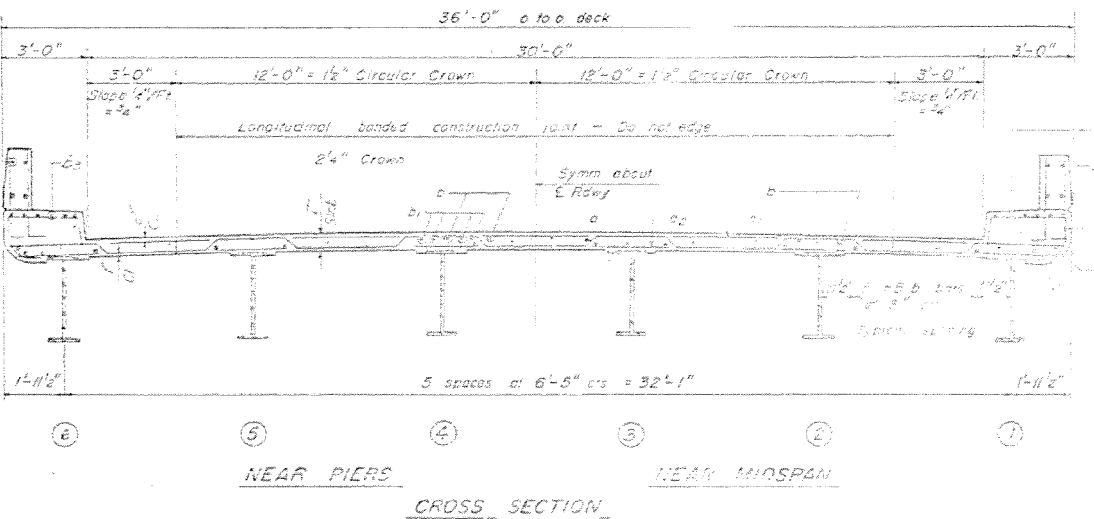
SECTION A-A



BAR c



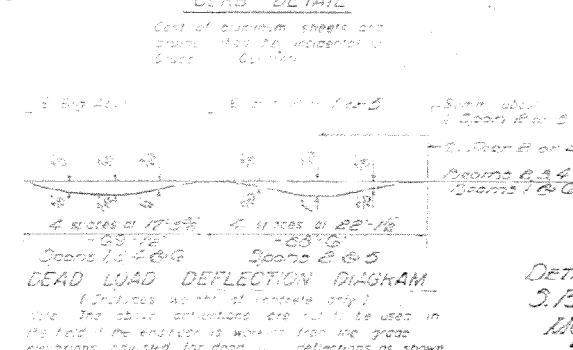
CURB DETAIL



NEAR PIERS

NEAR MIDSPAN

CROSS SECTION



DEAD LOAD DEFLECTION DIAGRAM

(Prices worth of concrete only)
Note: The above deflections are not to be used in
the field if the structure is worked from the grade
elevations adjusted for dead load deflections as shown
on sheet.

BILL OF MATERIAL

| Bar | No. | Size | Length | Shape |
|-----|-----|------|--------|-------|
| a | 334 | #5 | 36'-0" | --- |
| b | 302 | #5 | 30'-0" | --- |
| c | 302 | #5 | 30'-0" | --- |
| d | 300 | #5 | 33'-7" | --- |
| e | 192 | #5 | 25'-3" | --- |
| f | 98 | #5 | 30'-0" | --- |
| g | 98 | #5 | 11'-3" | --- |
| h | 40 | #5 | 33'-3" | --- |
| i | 120 | #5 | 11'-4" | --- |
| j | 64 | #5 | 15'-1" | --- |
| k | 64 | #5 | 11'-3" | --- |
| l | 16 | #5 | 33'-0" | --- |

Reinforcement steel 114 1,465
Structural Steel 114 468,820
Class A Concrete 114 503.4

Weight of rebar essential with
lead plates and stirrups are
included in the steel
cost of 13,990

SUPERSTRUCTURE
DETAILS & BILL OF MATERIAL
S.B. 1. RT. 132 - SEC. 103 - BR
MOULTRIE COUNTY
STA. 399 + 37.25

ADDED 4-10-66 CONDUIT DETAILS AND SEC. A-A, 11/12 AT PIER 3, BEAM B CROSS SEC. SHOWING PLACING OF CONDUIT.
NRF