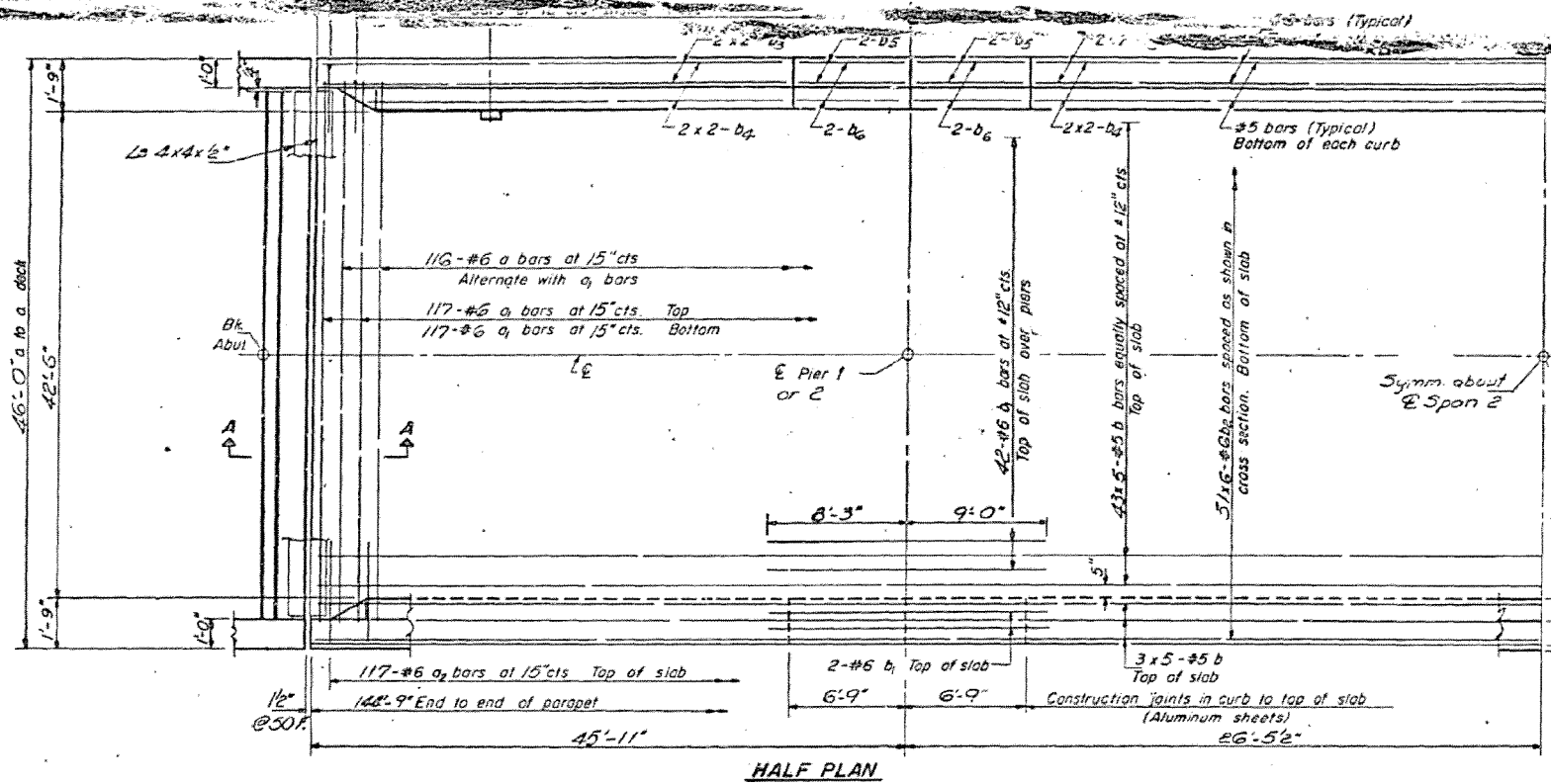


STATE OF ILLINOIS
DEPARTMENT OF TRANSPORTATION

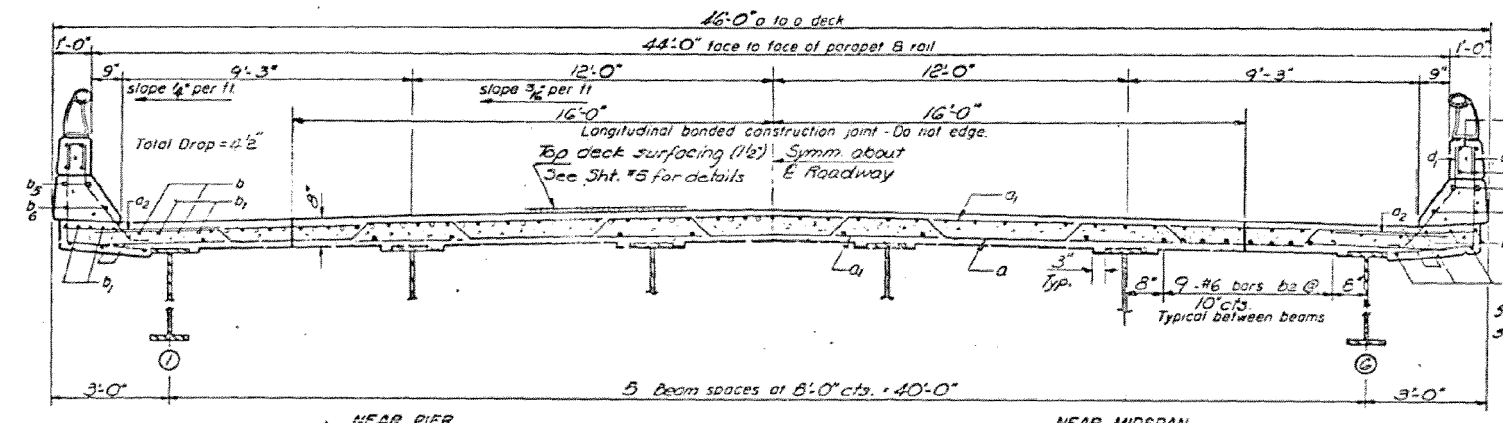
PROJECT NO.	SECTION	COUNTY	SHEET NO.	TOTAL SHEETS
120	0115	Shelby	29	8

SHEET NO. 3
11 SHEETS

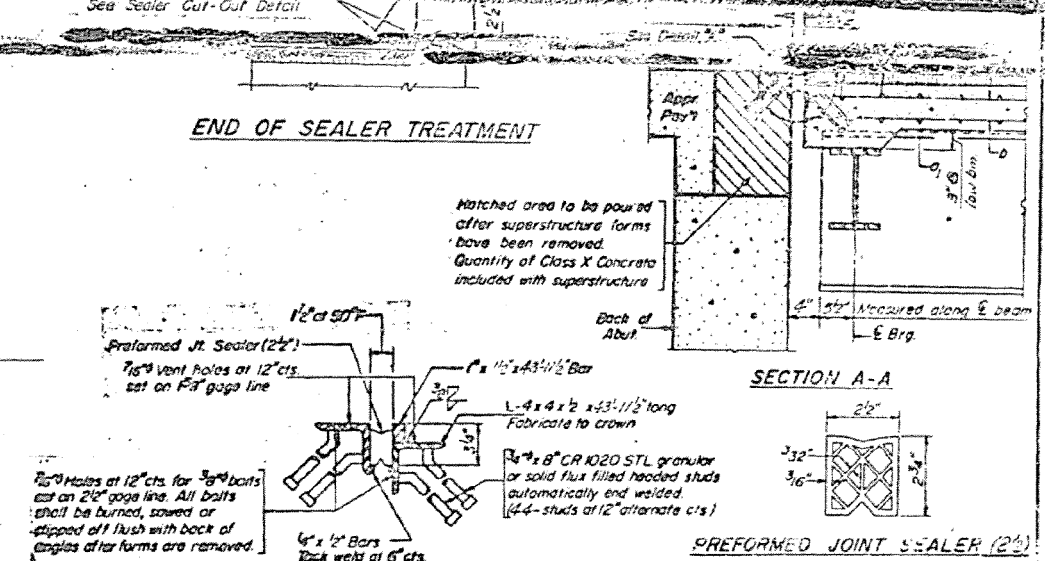
Note:
Bars indicated thus 20 x 3 - #5 etc.
indicates 20 bars of bars
3" spacing
bars = 24 dia



HALF PLAN

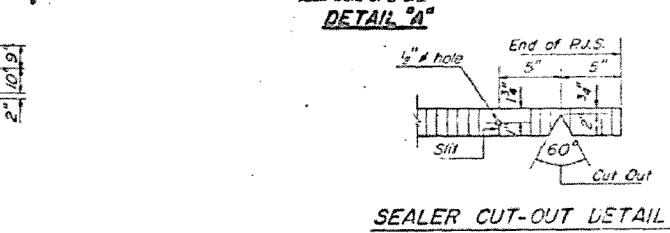


CROSS SECTION
LOOKING SOUTH



END OF SEALER TREATMENT

SECTION A-A

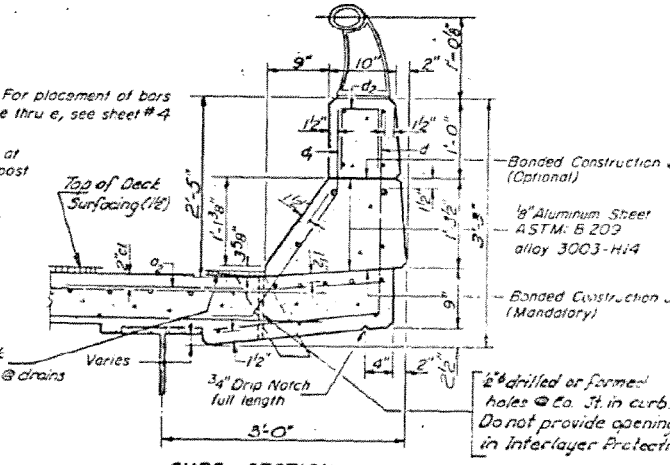


DETAIL 'A'

BILL OF MATERIAL

Bar	No	Size	Length	Notes
a	116	#6	15'-3"	
a	234	#6	44'-0"	
a2	234	#6	4'-0"	
b	2	#5	30'-7"	
b	92	#6	17'-3"	
b	306	#6	25'-0"	
b2	24	#6	20'-9"	
b	24	#5	20'-3"	
b2	2	#6	6'-6"	
b2	2	#5	6'-6"	

Reinforcement Bars	Lbs	Notes
Class X Concrete	Cu Yds	185.8



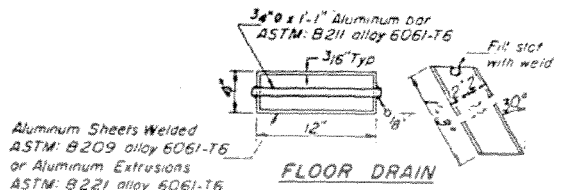
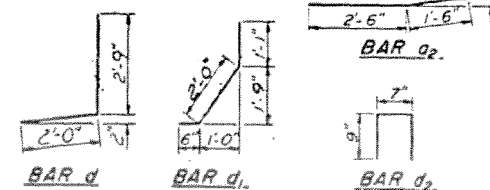
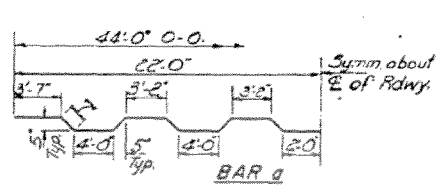
CURB SECTION

Cost of Aluminum Drains and Sheets shall be incidental to Class X Concrete

DESIGNED: *Jim Hill*
CHECKED: *Ch. Tom Ch.*
DRAWN: *A. Borrozo*
CHECKED: *C.T.C.*

EXAMINED: *Jim Hill*
PASSED: *Jim Hill*
APPROVED: *Jim Hill*

I-4106-0 3-1-68, 12-3-69



FLOOR DRAIN

The lengths and quantities of longitudinal reinforcement and Class X Concrete in parapets are not included in above quantities. See sheet #4.

SUPERSTRUCTURE
S.B.I. RTE. 126 SEC. DIV. 1
SHELBY COUNTY
STA. 21+52.97