

STATE OF ILLINOIS
DEPARTMENT OF TRANSPORTATION

ROUTE NO.	SECTION	COUNTY	TOTAL SHEETS	SHEET NO.
825	228A-7	WAYNE	18	27

TABLES OF DIMENSIONS

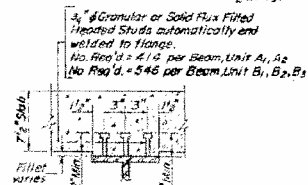
UNITS A

Unit Dim.	A1	A2
A	126'-1"	123'-2 1/2"
B	42'-0"	42'-3"
C	42'-3"	42'-0 1/2"
D	42'-10 1/2"	42'-18 1/2"
E	34'-0 1/2"	34'-5 1/4"
F	17'-6"	17'-3"
G	17'-3"	17'-0 1/4"
H	7'-4"	7'-2"
I	2'-1"	1'-10 1/4"

UNITS B

Unit Dim.	B1	B2	B3
A1	171'-0"	171'-10"	171'-7"
B1	42'-3"	42'-6"	42'-3"
C1	41'-10"	42'-3"	42'-5"
D1	42'-8 1/2"	43'-1 1/2"	42'-8 1/2"
E1	42'-3 1/2"	42'-8 1/2"	42'-10 1/2"
F1	17'-3"	17'-8"	17'-3"
G1	16'-10"	17'-3"	17'-5"
H1	7'-2"	7'-7"	7'-2"
I1	7'-9"	8'-1"	8'-3"

SECTION THRU SLAB



DESIGNED	E.F.V.
CHECKED	D.V.K.
ISSUED	P.W.M.
DATE	P.V.K.

UNIT B1-TOP OF W BEAM ELEVATIONS

Beam	Loc	Brig Pier #3	Brig Pier #4	Splice #5	Brig Pier #5	Brig Pier #6	Brig Pier #7
Beam 1	394.01	394.14	394.17	394.31	394.45	394.48	394.60
Beam 2	394.14	394.27	394.30	394.44	394.58	394.61	394.81
Beam 3	394.25	394.39	394.41	394.55	394.69	394.73	394.92

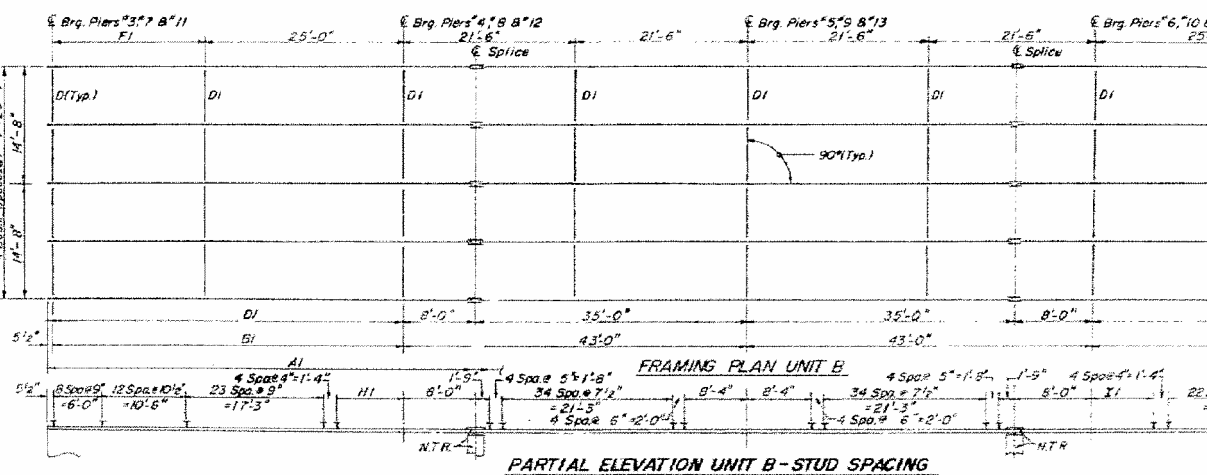
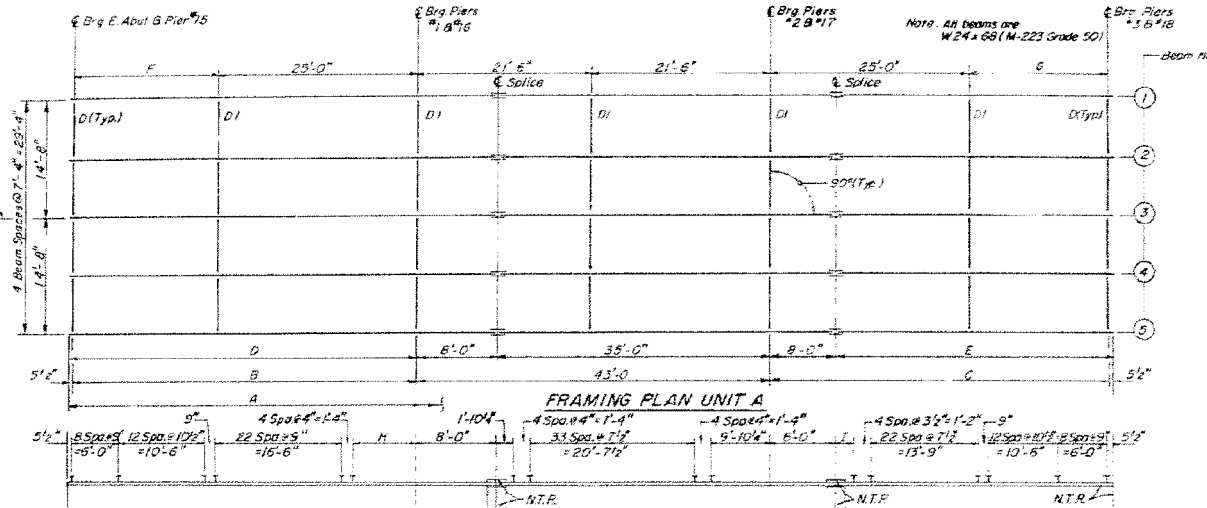
UNIT B2-TOP OF W BEAM ELEVATIONS

Beam	Loc	Brig Pier #7	Brig Pier #8	Splice #9	Brig Pier #9	Brig Pier #10	Brig Pier #11
Beam 1	394.69	394.76	394.80	394.90	395.01	395.03	395.15
Beam 2	394.81	394.91	394.93	395.03	395.13	395.16	395.32
Beam 3	394.93	395.02	395.04	395.15	395.25	395.28	395.43

UNIT B3-TOP OF W BEAM ELEVATIONS

Beam	Loc	Brig Pier #11	Brig Pier #12	Splice #13	Brig Pier #13	Brig Pier #14	Brig Pier #15
Beam 1	395.19	395.24	395.25	395.32	395.39	395.41	395.52
Beam 2	395.32	395.37	395.38	395.45	395.52	395.54	395.65
Beam 3	395.44	395.49	395.50	395.56	395.63	395.65	395.76

FRAMING PLAN-TOP BEAM ELEV'S
EA. RTE. 823 (S.B.I. RTE. 15)
OVER LITTLE WABASH RIVER
WAYNE COUNTY
SECTION 22 BP - 7
STA. 492+75



UNITS A
TOP OF W BEAM ELEVATIONS
UNIT A1

Beam	Loc	Brig Pier #15	Brig Pier #16	Splice #17	Brig Pier #17	Brig Pier #18	Brig Pier #19
Beam 1	393.38	393.55	393.58	393.77	393.80	394.00	
Beam 2	393.51	393.68	393.71	393.90	393.93	394.13	
Beam 3	393.63	393.79	393.83	394.02	394.05	394.24	

For fabrication only

UNIT A2

Beam	Loc	Brig Pier #15	Brig Pier #16	Splice #17	Brig Pier #17	Brig Pier #18	Brig Pier #19
Beam 1	395.52	395.53	395.53	395.58	395.59	395.67	
Beam 2	395.65	395.66	395.66	395.71	395.72	395.80	
Beam 3	395.77	395.77	395.77	395.82	395.84	395.91	

For fabrication only

Note: All beams are W24x68 (M-223 Grade 50)

N.T.R. - Notch Toughness Requirement is required for flanges and webs of rolled beams and webs and flange of splice plates.