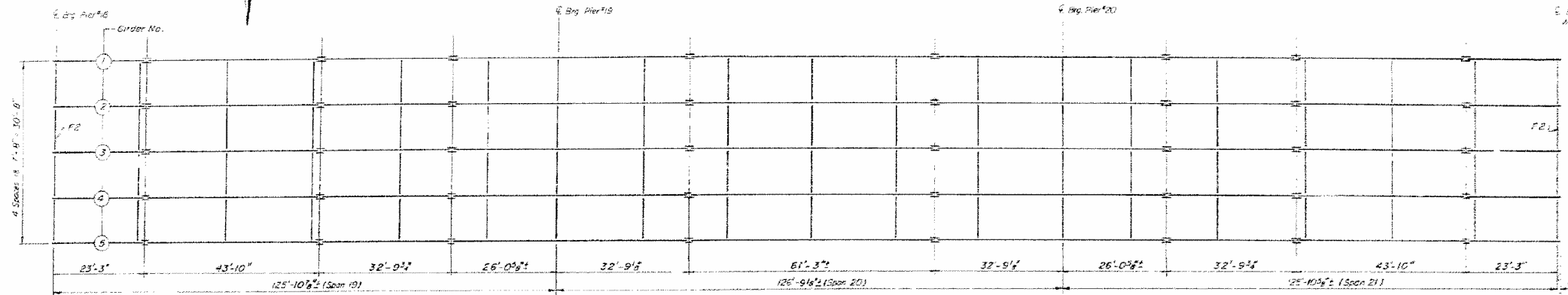


STATE OF ILLINOIS
DEPARTMENT OF TRANSPORTATION

PROJECT NO.	SECTION	COUNTY	TOTAL SHEETS	SHEET NO.
11-823	225R-7	WAYNE	15	15
27 SHEETS				



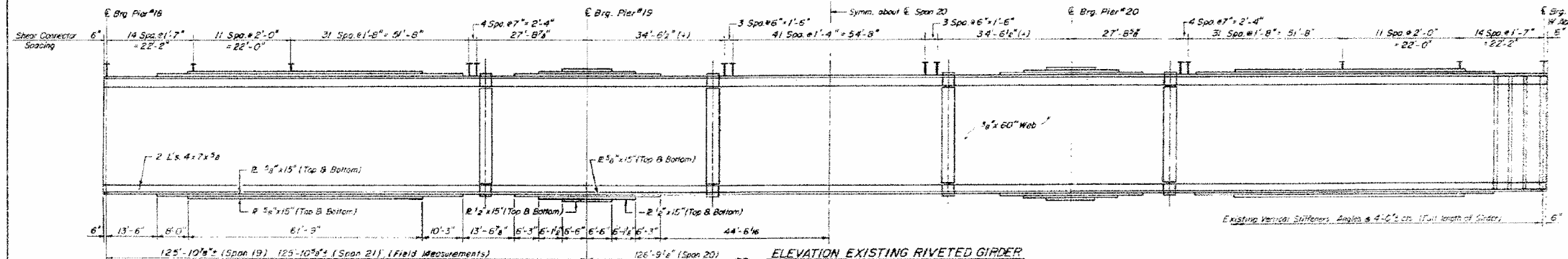
INTERIOR GIRDER REACTION TABLE

	At Abut or Pier 18	Pier 19 or 20
R _B (k)	69.4	186.6
R _L (k)	45.6	83.6
R _R (k)	9.1	16.6
R Total (k)	124.3	287.0

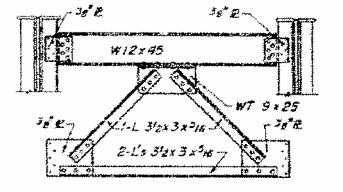
EXISTING RIVETED GIRDER FRAMING PLAN
(Note - Exst. R Girders to be incorporated into new construction.)

Note: R Girder modifications are limited to the application of Stds and the replacement of End X-Frames (F2) at each end of girder. Girders are to be cleaned and painted. See Special Provisions.

Note: Stds shall be 3/4" # and shall have a minimum length of 4". Stud lengths shall be varied as required to satisfy the requirement of 2" minimum embedment into slab. Stud row spacings are 1' and may be varied in the field to allow studs to miss existing rivet heads.

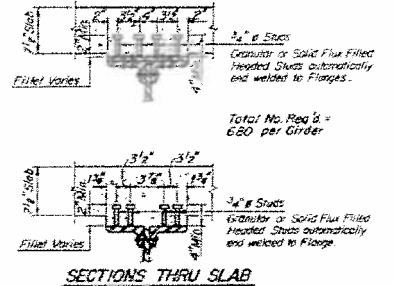


ELEVATION EXISTING RIVETED GIRDER



TYPICAL CROSS-FRAME F2 (Replacement)
(8. Rev'd.) See Note 7.

Note 7:
All dimensions are to be obtained from field measurements. Members may be connected by 1/4" fillet welds instead of rivets except at connection of diaphragm to web stiffeners where 3/8" diameter A325 bolts may be substituted. All existing holes in the web stiffeners for the diaphragms are to be used.



SECTIONS THRU SLAB

INTERIOR GIRDER MOMENT TABLE

	19	20	21	20	21	20
I _x (in ⁴)	101,922	65,648	26,028	101,922	65,648	26,028
I _y (in ⁴)	1,756	2,060	860	1,756	2,060	860
S _x (in ³)	2,964	1,112	1,112	2,964	1,112	1,112
S _y (in ³)	1,086	1,290	0,572	1,086	1,290	0,572
I _x (in ⁴)	1,308	-1,841.9	297.5	1,308	-1,841.9	297.5
I _y (in ⁴)	0.160*	0.160*	4.15	0.160*	0.160*	4.15
S _x (in ³)	213.2	94.6	94.6	213.2	94.6	94.6
S _y (in ³)	1,177.6	-975.4	925.5	1,177.6	-975.4	925.5
Moment (k)	234.6	-154.2	184.6	234.6	-154.2	184.6
Moment-comp (k)	1,625.7	-1,170.6	1,228.8	1,625.7	-1,170.6	1,228.8
I _x (in ⁴)	94.5	-6.82	13.04	94.5	-6.82	13.04
I _y (in ⁴)	15.84	-17.33	17.15	15.84	-17.33	17.15
VR	58.2	—	53.3	58.2	—	53.3

I_x and S_x are the moment of inertia and section modulus of the steel section. I_y and S_y are the moment of inertia and section modulus of the composite section used in computing I_x. VR is the maximum shear range in span. *S_x includes wt. of 25% of F.W.S. only weight due to cuts and diaphragms carried by Exterior Girders.

PLATE GIRDER MODIFICATIONS
EA RTE 823 (SBI RTE 15)
OVER LITTLE WABASH RIVER
WAYNE COUNTY
SECTION 22 BR - 7
STA. 492+75