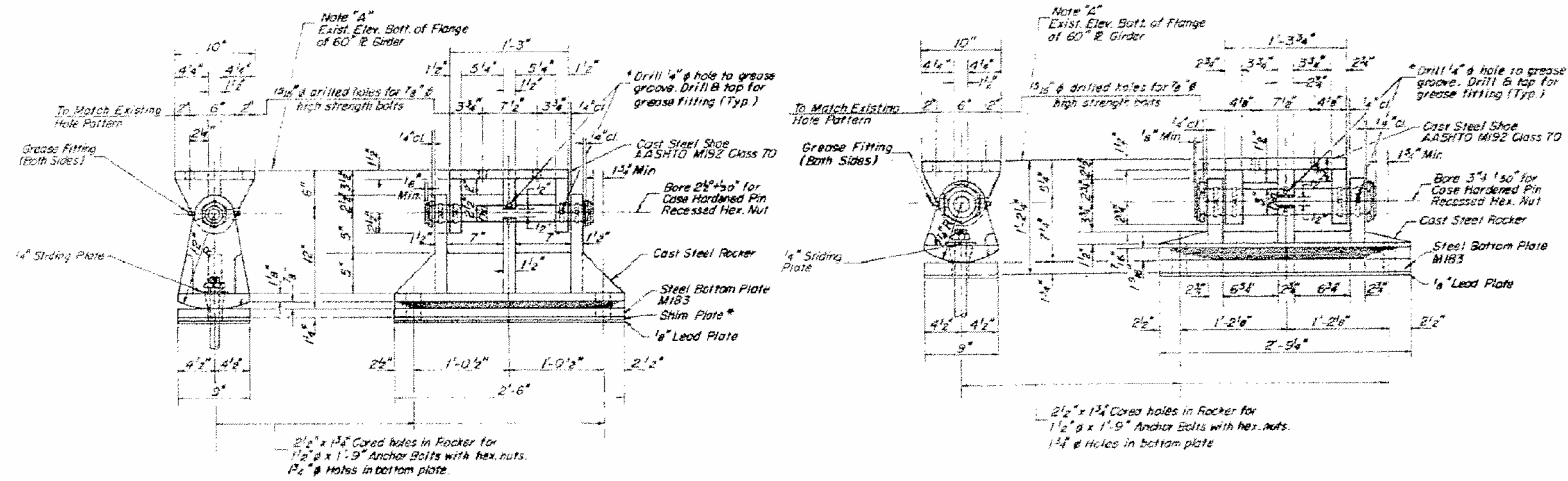


STATE OF ILLINOIS
DEPARTMENT OF TRANSPORTATION

PROJECT NO.	SECTION	COUNTY	TOTAL SHEETS	SHEET NO.
823	D7 BRIDGE PAINTING 2015-4	WAYNE	15	11
SHEET NO. 50F				



AT WEST ABUTMENT AND PIER # 18
(10 Assemblies Req'd)

AT PIER # 19
(5 Assemblies Req'd)

* Shim Plate 9" x 2'-6" x 3/8" required at corner girder at West Abutment.

Notes: M183 Structural Steel weldments of equal sections may be substituted for the castings. Fillet or partial penetration weld shall be used for weldments. Minimum weld size shall be 1/4 thickness of plate being welded, except maximum size of welds shall not exceed 3/4".
Provide 1/2" U.S. bolts for attachment of processed bearing assemblies to flanges of existing plate girder.

GREASE GROOVE ON SADDLE

* Note: Grease bearing assembly with molybdenum grease before installation.

Notes:

- Note "A": Maintain Existing Bottom of Flange Elevations.
- "B": The Existing Fixed Bearing Assembly Pier #20 shall be cleaned and painted in accordance with Std. Spec. 509.05.
- "C": Existing Expansion Bearings at Piers 18 & 19 and West Abutment shall be removed and replaced. Cost of removal shall be incidental to Structural Steel.

DESIGNED	F.E.V.
CHECKED	G.E.P.
DRAWN	H.E.S.
CHECKED	

PLATE GIRDER
REPLACEMENT BEARINGS
FA RTE. 823(S.91 RTE. 15)
OVER LITTLE WABASH RIVER
WAYNE COUNTY
SECTION 22 BR-7
STA. 492+75