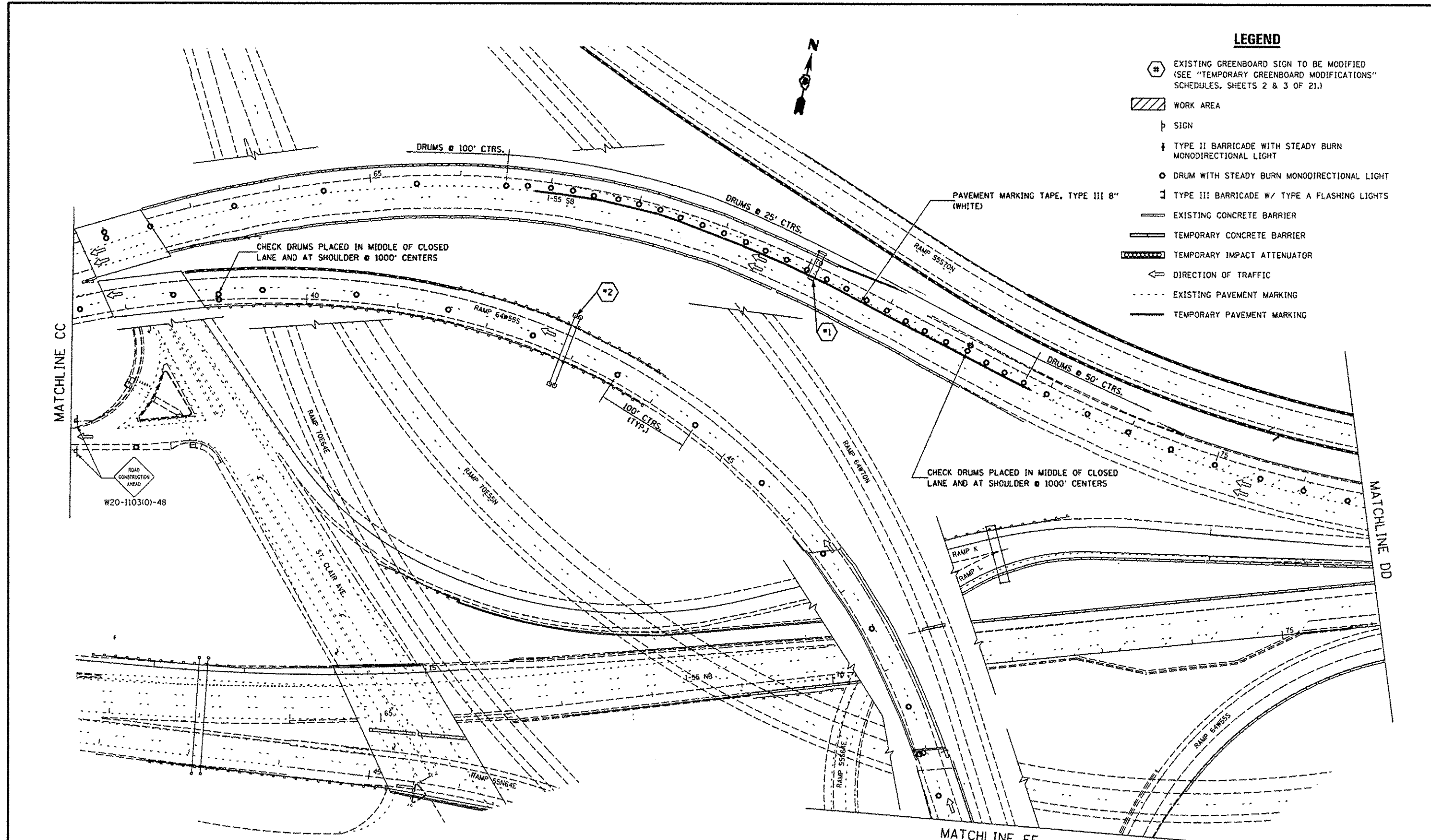


**LEGEND**

- ⊕ EXISTING GREENBOARD SIGN TO BE MODIFIED (SEE "TEMPORARY GREENBOARD MODIFICATIONS" SCHEDULES, SHEETS 2 & 3 OF 21.)
- ▨ WORK AREA
- ⊥ SIGN
- ⊥ TYPE II BARRICADE WITH STEADY BURN MONODIRECTIONAL LIGHT
- DRUM WITH STEADY BURN MONODIRECTIONAL LIGHT
- ⊥ TYPE III BARRICADE W/ TYPE A FLASHING LIGHTS
- EXISTING CONCRETE BARRIER
- TEMPORARY CONCRETE BARRIER
- ▬ TEMPORARY IMPACT ATTENUATOR
- ← DIRECTION OF TRAFFIC
- - - EXISTING PAVEMENT MARKING
- TEMPORARY PAVEMENT MARKING



CITY OF EAST ST. LOUIS, ILLINOIS

FILE NAME *	USER NAME * haydend	DESIGNED -	REVISED -	<b>STATE OF ILLINOIS DEPARTMENT OF TRANSPORTATION</b>	<b>TRAFFIC CONTROL PROTECTION PLAN LANE CLOSURE DETAILS AND EXISTING SIGN MODIFICATION PLAN</b>		F.A.P. RTE.	SECTION	COUNTY	TOTAL SHEETS	SHEET NO.
g:\p\work\p\dot\haydend\des\52153\0876\83-ahh-staging-lane-closure.dgn		DRAWN -	REVISED -		799	1BR, DRS-2	ST. CLAIR	156	180		
PLOT SCALE * 100.0000 / in.		CHECKED -	REVISED -		SCALE: N.T.S. SHEET NO. 16 OF 20 SHEETS STA. TO STA.		CONTRACT NO. 76B03				
PLOT DATE * 9/26/2014		DATE -	REVISED -		FED. ROAD DIST. NO. [ILLINOIS] FED. AID PROJECT						